

MARSHALL ISLANDS FILE TRACKING DOCUMENT

Record Number: 99

File Name (TITLE): Operations Plan No. 2-54, High
Winds and Natural Disaster

Document Number (ID): 17861

DATE: 3/1954

Previous Location (FROM): CIC

AUTHOR: JTF7/TG 7.4

Additional Information: _____

OrMIbox: 5

CyMIbox: 3

17861

HEADQUARTERS
TASK GROUP 7.4, PROVISIONAL
APO 187, c/o Postmaster
San Francisco, California

OPERATIONS PLAN NO. 2-54

HIGH WIND AND NATURAL DISASTER EMERGENCY PLAN

TASK GROUP 7.4
OPS PLAN NO. 2-54

HEADQUARTERS
TASK GROUP 7.4, PROVISIONAL
APO 187, c/o Postmaster
San Francisco, California
16 March 1954 1800M

OPERATIONS PLAN NO. 2-54

REFERENCES:

- a. Disaster Defense Plan, CJTF SEVEN No. 1-54
- b. Natural Disaster Defense Plan No. 1-54, Task Group 7.2.
- c. U. S. Naval Chart, Marshall Islands, Eniwetok Atoll, 1:100,000.
- d. Chart No. 6033, Hydrographic Office, Washington, D. C.
- e. Chart No. 6032, Hydrographic Office, Washington, D. C.
- f. Chart No. 5203, Hydrographic Office, Washington, D. C.
- g. Sea-Air Rescue Chart, Eniwetok Atoll.
- h. Eniwetok Building layout, 1" = 400'.

TASK ORGANIZATION:

- a. Headquarters, Task Group 7.4, Commander
- b. Headquarters, Test Support Unit, Commander.
- c. Headquarters, Test Aircraft Unit, Commander.
- d. Headquarters, Test Services Unit, Commander.
- e. Bikini Detachment, Commander.
- f. Other Task Group 7.4 Supporting Unit, Commanders.

1. SITUATION: Eniwetok lies within an area of the Pacific Ocean in which the natural phenomena of high winds, typhoons and tidal waves are not uncommon. The severity of the event and the resultant damage to life and property has not been as great in these instances, on an average, as to other locations. This is not, however, to be construed to mean that preparation for these natural disasters is not of prime importance.

2. MISSION: In the event of high winds, typhoons or a tidal wave warning this plan becomes an order and the missions of the Commander, Task Group 7.4 are:

- a. Coordinate with CTG 7.2 on the fulfillment of disaster plans.
- b. Establish a Command Post.
- c. Have all personnel of Task Group 7.4 and subordinate units thoroughly indoctrinated in the recognition and effects of a typhoon and/or tidal wave.
- d. Establish planned procedures to be followed in the event of high winds, typhoon or tidal wave.
- e. On order from ATCOM, ENIWETOK, assume detached and independent control of Task Group 7.4 personnel and aircraft based on ENIWETOK and act in the best interest of Task Group safety.

TASK GROUP 7.4
OPRS PLAN NO. 2-54

f. On order from ATCOM, ENIWETOK, execute aircraft evacuation plan for aircraft on ENIWETOK.

g. To protect and safeguard classified information and material from loss, destruction or compromise and to provide for the proper destruction of this matter if necessary.

h. Provide all possible physical security for assigned personnel.

i. Provide emergency evacuation for casualties and key scientific personnel if deemed necessary.

j. Effect emergency air evacuation of personnel from islands other than ENIWETOK AND PARRY subject to weather conditions. In the event of islands with no landing strip, proper and timely coordination will be made through Commander, Task Group 7.2 for amphibious air evacuation.

k. Provide all possible security for government property for which assigned units are responsible and for the private property of assigned personnel.

l. Continue operation of communications facilities as long as possible.

m. Upon abatement of adverse weather conditions, accomplish SAR operations as required within his capabilities.

3. TASK FOR SUBORDINATE UNITS:

a. Test Support Unit:

(1) Prepare and submit to this headquarters within ten (10) days, an effective and detailed emergency plan to include:

(a) Preparation for control of all personnel.

(b) Preparation for security of assigned and transient aircraft to include spoilers for all airfoils.

(c) Preparation for possible evacuation of aircraft. (SEE ANNEX B)

(d) Designation of specific evacuation crews for each assigned Test Support Unit aircraft except L-13 and helicopters.

(e) Accomplishment of evacuation of transient aircraft.

(f) Preparation for emergency issue of rations and supplies.

(g) Designation of a "ration officer" to procure and issue water and rations to his unit as directed.

(h) Provision for security of priority installations.

(i) Provision for securing tents, bedding and personal effects.

(j) Assistance in SAR necessities as directed.

(2) Upon approval by this headquarters the above plan will become Annex "C" to this Operations Plan.

b. Test Aircraft Unit:

(1) Prepare and submit to this headquarters within ten (10) days, an effective and detailed emergency plan to include:

(a) Preparation for control of personnel.

(b) Preparation for security of assigned aircraft to include spoilers for all airfoils.

(c) Preparation for possible evacuation of assigned aircraft (SEE ANNEX B)

(d) Designation of specific evacuation crews for each assigned Test Aircraft Unit aircraft.

(e) Designation of a "ration officer" to procure and issue water and rations to his unit as directed.

(f) Provision for securing tents, bedding and personal effects.

(g) Assistance in SAR necessities as directed.

(2) Upon approval by this headquarters the above plan will become Annex "D" to this Operations Plan.

c. Test Services Unit:

(1) Prepare and submit to this headquarters within ten (10) days, an effective and detailed emergency plan to include:

(a) Preparation for control of personnel.

(b) Preparation for security of assigned aircraft to include spoilers for all airfoils.

(c) Preparation for possible evacuation of assigned aircraft. (SEE ANNEX B)

(d) Designation of specific evacuation crews for each assigned Test Services Unit aircraft.

(e) Designation of a "ration officer" to procure and issue water and rations to his unit as directed.

(f) Provision for securing tents, bedding and personal effects.

(g) Preparation to evacuate casualties and/or key scientific personnel to HICKAM AFB, GUAM, or other distant points immediately upon notification.

(h) Assistance in SAR necessities as directed.

(2) Upon approval by this headquarters the above plan will become Annex "E" to this Operations Plan.

d. BIKINI Detachment (as applicable):

- (1) Prepare an effective and detailed emergency plan to insure the security of personnel and equipment.
- (2) Provide security for helicopters, aircraft and equipment as necessary.
- (3) Remove rotor blades from helicopters and secure aircraft by best available methods.
- (4) Coordinate typhoon and tidal wave security and protection efforts with the AEC and H&N Disaster Plans for that location.
- (5) Physical security of personnel will be paramount.

e. Other Task Group 7.4 Supporting Units:

- (1) Prepare for control of personnel.
- (2) Prepare for security of all equipment.
- (3) Take special precautions as necessary.

x. General Instructions:

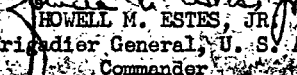
- (1) All units, detachments and sections will provide for constant personnel control and will be prepared to furnish damage control, search and rescue, and work parties as required.
- (2) Effective upon receipt of any alert condition, units, detachments and sections will inform the Task Group Commander of the number of men available for emergency details over and above operating requirements.
- (3) This plan becomes an order and will be executed upon notification of high wind alert condition V thru condition I or a Tidal Wave Alert.

4. ADMINISTRATION AND LOGISTICAL MATTERS:

- a. Normal administrative procedures apply.
- b. Changes in logistical procedures made necessary by a disaster condition are set forth in the Annexes.

5. COMMAND AND COMMUNICATIONS:

- a. Command Posts - Normal.
- b. Communications - Normal.


HOWELL M. ESTES, JR.
Brigadier General, U. S. A. F.
Commander

ANNEXES:

- A. Alert Plan
- B. Pre-Emergency and Evacuation Aircraft Assignment

DISTRIBUTION:

TASK GROUP 7.

OPRS PLAN NO. 2-57

Annex "A"
consisting of
6 pages

ANNEX A

TO

OPERATIONS PLAN NO. 2-54

ALERT PLAN

TASK GROUP 7
OPRS PLAN NO. 2-54
ANNEX A

ANNEX "A"
TO
OPERATIONS PLAN NO. 2-54
ALERT PLAN

HEADQUARTERS
TASK GROUP 7.4, PROVISIONAL
APO 187, c/o Postmaster
San Francisco, California
16 March 1954

1. GENERAL DISCUSSION:

a. Tidal Waves:

- (1) Fortunately the MARSHALL ISLANDS are situated and conformed to withstand the major effects of a tidal wave. The base structure of the atoll rises abruptly from the seas surrounding it on all sides. Topographical conformations such as long shelving approaches or confining hill or harbor structures are absent. The atoll is approximately 2,000 nautical miles from the Pacific "earthquake belt" in which most tidal waves originate.
- (2) The islands on the northern part of the Eniwetok Atoll are all only one or two feet above sea level at extreme high tide. Eniwetok and Parry Islands, to the south, average six to eight feet above this level. A tidal wave of moderate to severe proportions would result in more damage to the northern islands. Further, the most probable direction of approach of a tidal wave is from the north. Therefore, some danger of tidal wave damage to installations, and injury to personnel, exists on Eniwetok and Bikini Atoll. Plans for the protection of life and property against tidal waves must be made, and personnel must be trained in their part of those plans. A seismograph warning net exists in the Pacific utilizing existing command circuits.

b. Typhoons:

- (1) For purpose of standardization any wind with a velocity of fifty (50) knots or above will be considered a typhoon.
- (2) Numerous typhoons have been recorded in the MARSHALL ISLANDS during the past fifty years. The most recent typhoon was "HESTER" which caused severe property damage on Eniwetok Island on 29 December 1952. While no record of catastrophic damage exists, this may be due in part to lack of population and property concentration in the MARSHALL ISLANDS until recent years. Even though typhoons and other windstorms of great intensity can be forecast to some degree as to force, duration, and direction of travel, the number of imponderable factors in any one case is such that the record of past cases is little more than a source of general information. In an area where typhoons have been recorded, it is a matter of common sense to prepare for the worst.
- (3) The newer "Pacific" structures on Eniwetok Atoll have been designed to withstand winds of 105 MPH. Personnel and property inside such buildings will be considerably safer than in the open. (NOTE: This is protection from wind and rain damage only.) Doors and windows of Pacific

TASK GROUP 7.
OPRS PLAN NO. 2-54
ANNEX "A"

structures will be closed during typhoons. All wooden structures on the atoll are considered unsafe for protection of life and property unless they are strongly braced and heavily sandbagged. Quonset-type warehouses such as the majority of those on ENIWETOK ISLAND are potential sources of grave danger in case of typhoon; they will afford comparatively little protection. Securing them is a project of such magnitude that it cannot be done within the resources and time available after a typhoon warning.

- (4) In no event will sufficient advance warning of a typhoon be received in time to allow accomplishment of all that is desired. Therefore, priority in preparation for the typhoon must be given to the more critical installations and facilities, and their complete protection accomplished before less vital installations and facilities are considered. Movement of equipment and supplies in open storage will not be feasible in view of manpower and time limitations.
- (5) Securing of all Task Force and transient (MATS) aircraft as may be on ENIWETOK is an item of high priority because of the great value of such aircraft following the typhoon. Aircraft will be faced into the wind and spoilers will be used on all airfoils.

c. High Winds:

- (1) High winds will be those current or forecast winds of 27-49 knots and not expected to attain typhoon velocities. Very little, if any, damage to buildings or tents can be expected from winds of these velocities. Therefore, aircraft will receive priority under these conditions.

2. ALERT CONDITIONS:

a. Conditions: The following conditions of high winds, typhoons and/or tidal wave alert are established:

- (1) Condition V: Current or forecast winds with velocities of 27-38 knots and not expected to attain typhoon velocities.
- (2) Condition IV: Current or forecast winds with velocities of 39-49 knots and not expected to attain typhoon velocities.
- (3) Condition III: Typhoon winds, or winds of fifty (50) knots or more anticipated within forty-eight (48) hours.
- (4) Condition II: Typhoon winds, or winds of fifty (50) knots or more, anticipated within twenty-four (24) hours.
- (5) Condition I: Typhoon winds, or winds of fifty (50) knots or more, anticipated within twelve (12) hours.
- (6) The difficulties associated with the detection of tidal waves and the enormous speed of advance of such waves, coupled with the inherent limitation (distance and lack of communication) of the Pacific Tidal Wave Warning Network, indicate that little advance warning can be expected. It is of utmost importance, therefore, that, upon receipt of warning, unit commanders be prepared to immediately execute all precautions that time available will permit. Any tidal wave warning will be considered as Condition I.

b. **Actions:** Upon being notified of any of the above conditions, Commanders of Task Organizations will immediately:

- (1) Under Condition V:
 - (a) Secure loose equipment throughout his area.
 - (b) Follow procedures outlined in TO-01-1-50 for securing aircraft.
 - (c) Notify Adjutant, Task Group 7.4 of number of personnel available in the event they are needed for work details.
 - (d) Continue routine operations unless further notified.
- (2) Under Condition IV:
 - (a) Secure loose equipment throughout his area.
 - (b) Follow procedures outlined in TO 01-1-50 for securing aircraft.
 - (c) Post necessary personnel about area to preclude buildings, equipment, debris, etc., from being blown loose and causing excessive damage.
 - (d) Notify Adjutant, Task Group 7.4 of number of personnel available in the event they are needed for work details.
 - (e) Furnish work details as required.
 - (f) Tighten all tent tie downs.
 - (g) Continue limited operations at the discretion of the Commander.
- (3) Under Condition III:
 - (a) Establish Command Posts.
 - (b) Execute prepared plans for this particular condition.
 - (c) Prepare final manifests of all personnel.
 - (d) Establish a twenty-four (24) hour watch at the designated command post.
 - (e) Continue routine duties except as noted above.
- (4) Under Condition II:
 - (a) Suspend all routine activity and direct maximum efforts toward typhoon preparations.
 - (b) Commander, Task Group 7.4 will determine whether or not aircraft evacuation is necessary. If it is determined to evacuate the aircraft, immediate action will be taken to expedite take off.

- (1) Weather Station.
- (2) Communications Facilities.
- (3) All Aircraft.
- (4) B-50 Hangar.

b. Sandbagging or bulldozing of earth alongside buildings, reinforcement with cable or rope tie downs, and securing of light equipment within buildings are precautions which will be taken. (Sandbags will be available from the Depot Supply Officer, Building 602.)

c. Upon notification of alert, officers in charge of priority installations are responsible for the following:

- (1) Security and reinforcement of buildings.
- (2) Security of assigned aircraft.
- (3) Procurement of emergency supplies.
- (4) To request from appropriate command post equipment and manpower support as required to accomplish the above.

4. VEHICLES AND HEAVY EQUIPMENT:

a. Security of motor vehicles and heavy equipment is not practical as their use will be required until such time as all surface movement is impractical. Moreover, vehicles and heavy equipment provide excellent reinforcement around critical installations and may be used as such. Where possible, vehicles will have tops removed and windshields laid down over engine hood and secured. This will prevent personnel injuries from flying glass.

5. WAREHOUSES AND SUPPLIES:

a. Quonset-type warehouses are potentially dangerous and afford little protection. Security of these buildings cannot reasonably be accomplished within the time and resources after a typhoon or tidal wave warning.

b. Movement of equipment and supplies in open storage will not be feasible in view of manpower and time limitations.

6. TENTS, BEDDING AND PERSONAL EFFECTS:

a. All tents, mattresses, mattress covers, sheets, pillows, pillow cases, beds and personal effects will be protected as outlined in Appendix 3 to Annex B.

7. ALERT ANNOUNCEMENT:

a. High Winds (Conditions I and II)

"(1) The Commander, Weather Central Element, Provisional, or his designated representative will notify the Adjutant or Duty Officer, Task Group 7.4 and the Base Operations Officer of weather situations, observed or forecast, which may warrant declaration of a condition."

(2) The Adjutant or Duty Officer, Task Group 7.4 will in turn notify the following of the information received:

TASK GROUP 7.4
OPRS PLAN 2-54
ANNEX A

Change #1

- (a) Commander, Task Group 7.4.
 - (b) All Directors and Special Staff Sections of Task Group 7.4 headquarters.
 - (c) Commanders of each subordinate unit.
- (3) Commanders of each unit will alert their unit.
 - (4) The Base Operations Officer will immediately notify the following:
 - (a) Base Maintenance Officer.
 - (b) Operations Officer of each unit.
 - (c) Any other person or agency deemed advisable.

b. Typhoons (Conditions III, II and I) or Tidal Waves:

- (1) The senior weather observer on duty will notify CJTF SEVEN, Adjutant or Duty Officer, TG 7.4, Adjutant or Duty Officer, Task Group 7.2, and the Base Operations Officer.
- (2) The Task Group 7.2 Alert Officer will cause a series of prolonged blasts to be sounded over the siren system.
- (3) The condition of alert to be assumed will also be announced over the public address system.

8. POST HIGH WIND OR DISASTER ACTIONS: When the emergency abates, subordinate unit commanders and section chiefs will:

- a. Act upon direction of Commander, Task Group 7.4.
- b. Provide first aid and movement of injured personnel to the hospital.
- c. Muster all personnel and report to CTG 7.4 who will report to ATCOM, ENIWETOK.
- d. Initiate damage survey and report findings to the Commander Task Group 7.4, who will report the combined damage to ATCOM, ENIWETOK.
- e. Be prepared to rehabilitate all areas as directed.
- f. Protect areas of responsibility from looting and outbreak of fire.

HOWELL M. ESTES, JR.
Brigadier General, U. S. A. F.
Commander

OFFICIAL:

Paul H. Fackler
PAUL H. FACKLER
Lt Colonel, USAF
Director of Operations

TASK GROUP 7.4
OPRS PLAN 2-54
ANNEX A

Annex "B"

In 2 pages w/3

appendices consisting

of 4 pages

ANNEX B

TO

OPERATIONS PLAN NO. 2-54

PRE-EMERGENCY SHELTER AND EVACUATION AIRCRAFT ASSIGNMENT

TASK GROUP 7.4
OPRS PLAN NO. 2-54
ANNEX B

B

ANNEX #8
TO
OPERATIONS PLAN NO. 2-54

PRE-EMERGENCY SHELTER AND EVACUATION AIRCRAFT ASSIGNMENT

1. GENERAL:

a. This annex sets forth procedures to be followed in establishing shelter assignment and allocation of aircraft space for possible evacuation.

2. SHELTER ASSIGNMENT:

a. The following Pacific type buildings have been allocated TG 7.4 by CTG 7.2 for shelter during emergencies: 38, 39, 40, 41, 42, 46, 47, 48, 49 and 50. Buildings 43, 44, 51, 52, 113, 121 and 123 are also allotted and will be used for equipment and personal baggage storage for those personnel who will have to evacuate the tents.

b. Building assignment is made to each TG 7.4 unit as indicated in Appendix 1 to this Annex.

c. TG 7.4 Headquarters personnel will be assigned specific spaces in shelters by Adjutant, TG 7.4.

d. TG 7.4 Headquarters personnel will be assigned specific duties by Headquarters Commandant, Test Support Unit.

e. Each Test Unit Headquarters will outline specific duties and spaces for their personnel.

f. Personnel spacing will be as outlined in Appendix 2 to this Annex. NOTE: Weather Island personnel will go with evacuation aircraft to destination. Bikini Detachment will either be returned to Eniwetok or go with evacuation aircraft to destination.

3. AIRCRAFT ASSIGNMENT:

a. The Director of Operations, TG 7.4 will allocate a pro-rata share of aircraft spaces to each unit in the event of emergency personnel evacuation. This allocation will be made by aircraft type with the spaces allocated to each unit aboard each aircraft. Priority will be given to those key personnel designated by CJTF SEVEN. Task Group 7.4 Regulation 55-2, Disaster Air Evacuation, will be followed in allocating spaces.

b. Upon command of CJTF SEVEN, each Task Group will comply with Task Group regulation 55-2, Disaster Air Evacuation, in preparing for personnel evacuation.

c. Each aircraft will have a specific evacuation and maintenance crew designated by the Unit Commander (See TG 7.4 Regulation 55-2, Disaster Air Evacuation). These crew lists will be kept current and on file within the Test Units possessing the pertinent aircraft.

d. Pending future determination of maximum personnel loads aboard each aircraft, the following criteria are established:

- (1) F-84 1 person per aircraft.
- (2) C-47 49 persons per aircraft.
- (3) B-36 250 persons per aircraft.

- (4) WB-29 100 persons per aircraft.
- (5) C-54 105 persons per aircraft.
- (6) SA-16 16 persons per aircraft.
- (7) B-47 4 persons per aircraft.

NOTE: Commanders of units possessing aircraft indicated will prepare detailed blank manifests and diagrams showing loading space available. These manifests and diagrams will be broken down into spaces available in each compartment or section of the aircraft concerned. Copies of these manifests and diagrams will be maintained in the files of the pertinent Test Unit to be used immediately upon notification to evacuate.

The above figures are for emergency evacuation only and include no parachutes or other superfluous weight. Each person may carry toilet articles and one change of underwear, plus one canteen of water.

e. Each evacuation crew will compute a Form F in two copies for their particular aircraft to determine the load distribution for the above personnel. Copies of the Form F will be maintained with the manifests and diagrams required in d above.

f. Final movement details are outlined in Task Group Regulation 55-2, Disaster Air Evacuation.

OFFICIAL:

HOWELL M. ESTES, JR.
Brigadier General, U. S. A. F.
Commander

Paul H. Fackler
PAUL H. FACKLER
Lt Colonel, USAF
Director of Operations

3 Appendices:

1. Shelter Assignment
2. Shelter Floor Plan
3. Protection of Tents and Equipment

TASK GROUP 7.4
OPRS PLAN 2-54
Annex "B"

B-2

**APPENDIX 2
TO
ANNEX B
OPERATIONS PLAN NO. 2-54
SHELTER FLOOR PLAN**

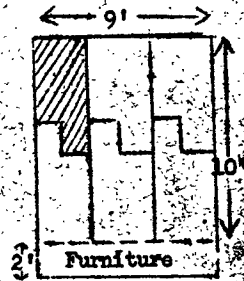
Floor plan for personnel spacing in Pacific Bldgs size 25' X 60'.

6 men / room = 54
10 men / hall = 10
Total Men / Bldg = 64
5 Bldgs Total = 320

*Furniture will be stacked on built-in desk in each room.

Note: Latrine will be kept clear for use.

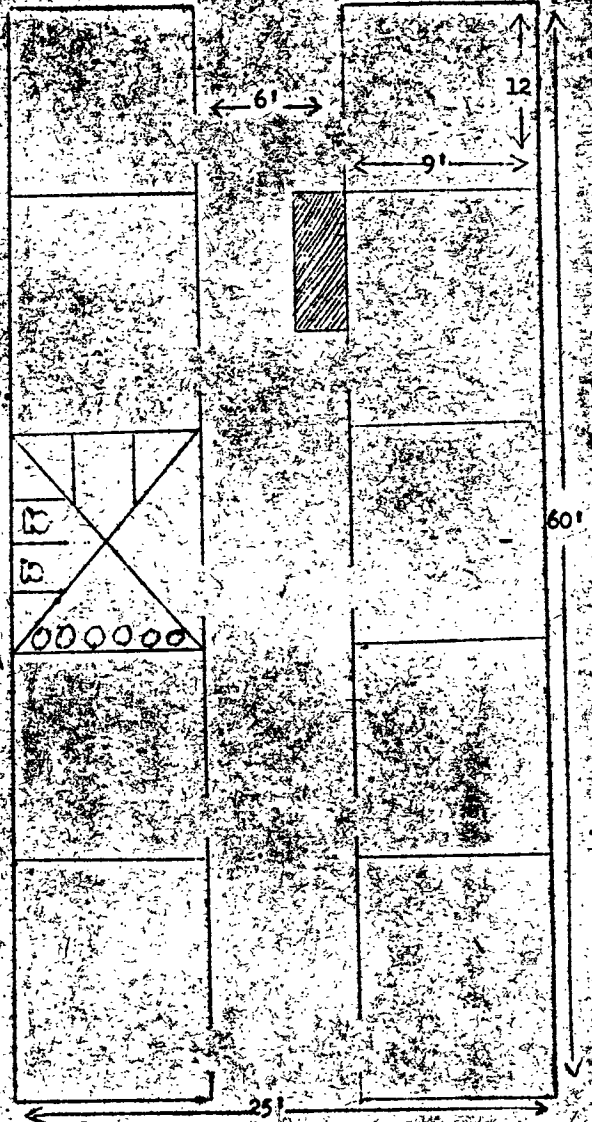
Room Plan of 9 ft by 12 ft:



6 men / room



One (1) man 6' X 3' on floor lying



Building Plans of Buildings No. 38, 39, 40, 41, and 42.

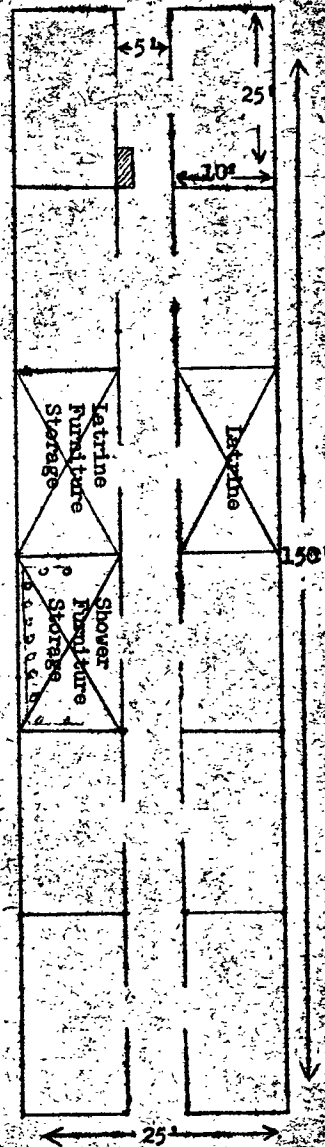
SHELTER FLOOR PLAN (cont'd)

Floor plan for personnel spacing in Pacific Bldgs size 25' X 150'.

20 men / room = 180
 25 men / hall = 25
 Total men / Bldg = 205
 5 Bldgs Total = 1025

*Furniture from each room will be moved into one latrine and shower room.

Note: One latrine will be kept clear for use.



Room plan of 10' X 25' room



20 men / room



1 man 6' X 2' lying on floor.

Building Plans of Buildings 46, 47, 48, 49, and 50.

APPENDIX 3
TO
ANNEX "B"
PROTECTION OF TENTS AND EQUIPMENT

1. In order to furnish maximum protection to tents and equipment contained therein, the following procedures will be followed:

a. Fold all beds and move into the latrine buildings normally utilized by the pertinent tent row. These beds will be stacked on the shower room floor to serve as a platform for bedding and personal effects.

b. All bedding will be moved into the latrine buildings and stacked in an orderly manner.

c. All personal effects will be packed in containers owned by the individual and stacked in an orderly manner in the latrines.

d. Tents will be rolled to the ridge pole of the tent frame with opening of roll being on the under side. Tent rolls will be tied securely to ridge pole.

e. Hot locker electrical plugs will be disconnected, the lockers laid down with the doors to the floor and covered with canvas as available.

f. Equipment from orderly room and supply tents will be moved to the nearest latrine and stacked in an orderly manner. Typewriters and easily damaged equipment will be protected as necessary to prevent breakage.

2. In the event a latrine becomes full before all equipment from the appropriate area is stored, the equipment will be carried to any other latrine (listed in this annex) and stored therein.

ANNEX "C"

ANNEX "C"
TO
OPERATIONS PLAN NO. 2-54
TEST SUPPORT UNIT
PLAN

TASK GROUP 7.4
OPRS PLAN NO. 2-54

C

ANNEX "C"
TO
OPERATIONS PLAN NO. 2-54

HEADQUARTERS
TASK GROUP 7.4, PROVISIONAL
APO 187, c/o Postmaster
San Francisco, California
21 April 1954

TASK ORGANIZATION:

- | | |
|---------------------------------|------------------|
| a. Test Support Unit | Commander - 4226 |
| b. 4931st Test Support Squadron | Commander - 4263 |
| c. 4932nd Test Support Squadron | Commander - 3263 |

1. SITUATION:

Eniwetok lies within an area of Pacific Ocean in which the natural phenomena of typhoon and tidal wave occur. Numerous instances of both have been recorded. The severity of the event and the resultant damage to life and property has not been as great in these instances, on an average, as at other localities. The possibility of a natural disaster occurring is sufficiently great that we must place prime importance on being prepared for it.

2. MISSION:

- a. To protect the national security by safeguarding all security information and material against loss, destruction, or compromise.
- b. To provide for the destruction of security information and material should it become apparent that this is necessary as all other safety measures have failed. (Refer to paragraph 2, Appendix 3).
- c. To provide all possible physical security for personnel.
- d. To provide all possible security for government and private property.

3. TASKS FOR SUBORDINATE UNITS:

a. 4931st Test Support Squadron:

- (1) Base Operations Officer, upon notification of an alert, will:
 - (a) Place all flying personnel on thirty (30) minute alert status
 - (b) Be present or have a responsible representative present in Building 89, phone number 4252 or 3297, until appropriate notams have been dispatched, local traffic secured and personnel safety dictates movement to Personnel Shelter (see appendix 3).
 - (c) Secure list of flyable aircraft from Maintenance Officer.
 - (d) Notify Commander, Test Support Unit, by type, how many aircraft and crews are available for air evacuation work.

TASK GROUP 7.4
OPRS PLAN NO. 2-54
ANNEX "C"

C-1

- (e) On directive of Commander, effect air evacuation of islands other than Eniwetok and Parry.
- (f) Assign aircraft to SAR upon request of Commander, Task Group 7.4 for air search and rescue operations when weather permits.

b. 4932nd Test Support Squadron:

- (1) Aircraft Maintenance Officer, upon notification of an alert, will:
 - (a) Use maximum effort to get all aircraft in immediate flying condition.
 - (b) Install two long-range fuel tanks in each C-47 within limits of time and capability. This will be accomplished when only the aircraft are to be evacuated. During personnel evacuation no long-range fuel tanks will be installed.
 - (c) Furnish Base Operations with a list of all aircraft available for flying.
 - (d) Place all maintenance personnel and crew chiefs on thirty (30) minute alert.

x. General:

- (1) Each officer or NCO in charge of a unit will maintain contact with each person under his supervision during alert conditions.
- (2) Squadron Commanders will keep the Test Support Unit Personnel Officer advised as to the number of personnel available for emergency details.

4. ADMINISTRATIVE AND LOGISTICAL MATTERS:

a. Normal administrative procedures, except emergency reports, will be made following disaster.

b. Normal logistic procedures, except emergency action will be taken to replace supplies vital to the mission.

c. Upon notification of alert, the Adjutant, Test Support Unit will draw from the Task Group 7.2 Commissary Officer one emergency ration for each individual in the Test Support Unit, and will draw from the Depot Supply Officer sufficient water cans to contain one gallon of water per man. He will fill and store the water cans and emergency rations in one of the "Pacific" type buildings allotted for use by his unit (Refer to Appendix 3). Emergency water and rations will not be issued to individual until approval is obtained from Commander, Test Support Unit.

5. COMMAND AND SIGNAL MATTERS:

a. Command Posts:

Commander, Test Support Unit	Building 135, Phone 4226
Commander, 4931st Test Spt Sq	Tent H-1, Phone 4263
Commander, 4932nd Test Spt Sq	Tent H-1, Phone 4231

TASK GROUP 7.4
 OPRS PLAN NO. 2-54
 ANNEX "C"

C-2

b. Alternate Command Posts:

Commander, Test Support Unit	Building 77, Phone 3244
Commander, 4931st Test Spt Sq	Building 39, Phone 4123
Commander, 4932nd Test Spt Sq	Building 38, Phone 4121

c. Communications:

- (1) Normal telephone circuits will serve as the primary means of communications.
- (2) A radio net consisting of AN/PRC-10's will be set up at the following locations and will be used as a secondary means of communications.

LOCATIONS:

Building 135
Building 89
Tent M-1
Tent H-1

- (3) In addition to the above any vehicle mounted radio equipment may be utilized as a back-up or fill-in means of communications. Vehicle mounted radio equipment will be utilized as directed by the Commander, Test Support Unit.

OFFICIAL:

HOWELL M. ESTES, JR.
Brigadier General, U. S. A. F.
Commander



PAUL H. PACKLER
Lt Colonel, USAF
Director of Operations

APPENDICES:

1. Alert Plan
2. Aerial Evacuation
3. Protection of Life and Property

TASK GROUP 7.4
OPRS PLAN NO. 2-54
ANNEX "C"

C-3

APPENDIX 1
TO
ANNEX "C"
OPERATIONS PLAN NO. 2-54
ALERT PLAN

1. GENERAL:

a. The following conditions of Typhoon Alert are established for Eniwetok:

- (1) Condition III: Typhoon winds, or winds of 50 knots or more, anticipated within 48 hours.
- (2) Condition II: Typhoon winds, or winds of 50 knots or more, anticipated within 24 hours.
- (3) Condition I: Typhoon winds, or winds of 50 knots or more, anticipated within 12 hours or less.

b. Tidal Wave:

- (1) Little advance warning can be expected if and when a Tidal Wave occurs.
- (2) Each Squadron Commander must be prepared to execute immediately all precautions that time will permit, i.e., muster personnel, procure and place rations, and water inside "Pacific" type buildings that are to be used for shelter, secure classified documents, place available 2½ ton or larger vehicles on storm approach side of buildings and be sure that all personnel are inside appropriate "Pacific" type buildings in adequate time to safeguard lives.

2. ALERT ANNOUNCEMENT:

a. Task Group 7.2 will cause a series of prolonged blasts over the siren system.

b. The Provost Marshal, TG 7.2, is responsible that the condition of the alert is announced over the public address system.

c. Adjutant, Test Support Unit, will insure that Squadron Commanders are aware of the alert.

d. Squadron Commanders will be responsible for notifying each section chief within his squadron of the situation.

3. PERSONNEL ACTION UPON ALERT ANNOUNCEMENT:

a. Squadron Commanders and all staff officers will report without delay to Headquarters, Test Support Unit. Other personnel (officers and airmen) report to their squadron area, for briefing on situation and action required. (See Appendix 3).

b. On Condition III:

- (1) Squadron and Detachment Commanders and section heads, prepare final muster of personnel.

TASK GROUP 7.4
OPRS PLAN NO. 2-54
ANNEX C, APPENDIX 1

CI-1

- (2) Continue routine duties.
- c. On Condition II:
 - (1) Squadron Commanders will suspend all routine activity and direct maximum efforts toward storm preparations.
 - (2) Man command posts and establish messenger service to Building 135 or 41 (refer to paragraph 5, Basic Plan) in event of power and telephone failure.
 - (3) Commander, Test Support Unit, establish messenger service to Building 90.
 - (4) Secure buildings and tents for typhoon protection to the extent of capabilities on hand. (See Appendix 3).
- d. On Condition I: Squadron Commanders and Unit Chiefs will:
 - (1) Turn off electrical power to all buildings except those requiring lighting during the emergency.
 - (2) Station damage control, rescue, and first aid parties. Damage control parties may be able to remedy minor damage as the storm progresses and before it develops into major damage.
 - (3) Move all personnel inside typhoon shelters except those on authorized duties. (See Appendix 3).
- e. Post Storm Actions: Squadron Commanders and Unit Chiefs will:
 - (1) Maintain emergency communications until normal channels are restored.
 - (2) Provide for first aid and movement of injured personnel to the hospital or other designated place in the event hospital building is inoperable.
 - (3) Muster personnel and report all casualties and missing personnel to Personnel Officer, Test Support Unit.
 - (4) Institute damage survey and report extent of damage to Commander, Test Support Unit.
 - (5) Begin rehabilitation work to resume normal conditions as soon as possible.

APPENDIX 2
TO
ANNEX "C"
OPERATIONS PLAN NO. 2-54
AERIAL EVACUATION

1. GENERAL:

a. On notification of alert conditions I, II, or III, multi-engine aircraft will be prepared for evacuation. Passengers and destination must be approved by Commander, Task Group 7.4, or his designated representative. Liaison and Helicopter type aircraft will be used to evacuate islands other than Eniwetok and Parry, if weather conditions permit.

2. SPECIFIC:

a. Base Operations Officer will alert aircraft crews for flight. Roster of aircraft evacuation crews is maintained in Base Operations and Test Support Unit Personnel Office.

b. Twin-engine C-47 type aircraft equipped with long-range fuel tanks will be readied for flight to Wake, Guam, Kwajalein, or Majuro Islands, as the Commander, Task Group 7.4 may direct. Long-range fuel tanks will be used when aircraft are evacuated without personnel loads.

c. Aircraft capable of long-range flights will be dispatched to points designated by the Commander, Task Group 7.4. Transient aircraft will be given a priority passenger list without regard to scheduled passengers.

d. Liaison type aircraft and pilots will stand by to evacuate islands other than Eniwetok and Parry.

(1) All available aircraft will be dispatched as the need arises; however, all aircraft will be secured when wind reaches 30 knots.

(2) Normal liaison communications and operational control will apply.

e. Helicopters will be used primarily for rescue work, but may be used for evacuation purposes depending on the situation as it develops.

f. Base Operations Officer will be in charge of dispatching aircraft and will:

(1) Maintain close communications with the weather officer to insure safe flight paths for all aircraft departing or operating from this station.

(2) Monitor progress of situation and recall liaison aircraft and helicopters when the situation dictates.

(3) Priority for passengers will be obtained through this Headquarters or Parry Island Coordinator, whichever is applicable.

TASK GROUP 7.4
OPRS PLAN NO. 2-54
ANNEX C, APNDX 2

C2-1

APPENDIX 3
TO
ANNEX "C"
OPERATIONS PLAN NO. 2-54
PROTECTION OF LIFE AND PROPERTY

1. GENERAL:

a. Utmost precaution must be taken to safeguard TOP SECRET, RESTRICTED DATA, other classified documents, personnel, aircraft, supplies, etc.

2. CLASSIFIED MATERIAL:

a. Adjutant, Test Support Unit, will be responsible for taking TOP SECRET and RESTRICTED DATA to the concrete vault in Finance, Building 15. Other classified material in locked safes inside "Pacific" type buildings will be considered reasonably safe. However, the Commander, Task Group 7.4, depending on the situation, may order classified matter to be destroyed. If this occasion arises, it will be the responsibility of each officer in charge to assure total destruction according to pertinent SOP's and regulations.

3. PERSONNEL SAFETY:

a. Squadron Commanders Responsibility:

- (1) Squadron Commanders are responsible to hold to an absolute minimum the exposure of personnel to dangerous conditions.
- (2) On notification of any alert personnel will be mustered and roll call taken at which time all personnel will be briefed on the situation and proposed course of action to be taken. Depending on whether it is duty hours or non-duty hours, squadron commanders have the prerogative of holding this muster and briefing at the most convenient locations, i.e., 4932d Commander can hold this muster at the hangar if he so desires.
- (3) As time permits, each commander will reinforce buildings and tents within his area of responsibility by sand bagging, bulldozing of earth along sides of buildings, reinforcement with cable or rope, tie-downs, and the securing within buildings of light weight equipment.

b. Communications For Command Channels as Situation Progresses:

- (1) Each Squadron Commander will maintain telephone communications with his subsections and/or work details as long as possible.
- (2) In addition to the above, each squadron commander will have a vehicle and runner available in order to maintain contact with his personnel in various areas. This will be in addition to the runner for communications with Test Support Unit Headquarters.
- (3) Any time the situation develops that communications with personnel in various areas becomes questionable, commanders

officers and non-commissioned officers or anyone in charge will automatically insure return of their personnel to their prescribed areas for shelter.

- (4) No Commander or supervisor will place personnel on a location during any alert unless communications can be maintained with them.

c. Work Details:

- (1) After muster and briefing, squadron commanders will provide available personnel for work details on request from the Test Support Unit Personnel Officer.
- (2) Prior to departing the squadron area, the NCO in charge will be briefed on who to report to and where work is to be performed. All work details will be recalled to their shelter areas upon assumption of Condition I.

d. Grouping of Personnel:

- (1) Personnel of the 4931st Test Support Squadron will group in the squadron area except during duty hours. Base Operations Officer will muster and maintain control of those personnel whose job assignment is on the flight line. During non-duty hours all personnel, officers and airmen, will assemble in the squadron area.
- (2) During duty hours personnel of the 4932d Test Support Squadron will assemble for muster at the hangar. During non-duty hours all personnel, officers and airmen, will assemble in the squadron area.
- (3) Test Support Unit Headquarters personnel will assemble during duty hours at Headquarters Building 135. During non-duty hours at the 4931st Test Support Squadron Area. The Test Support Unit Adjutant will be responsible for muster and briefing of Headquarters personnel.

c. Shelter for Personnel During Typhoon or Tidal Wave:

- (1) Personnel of all units that are not, repeat, not required for duty on work details will remain in their assigned housing until condition I, at which time they will proceed to their storm shelter unless ordered to do so prior to Condition I.
- (2) During the briefing the commander in charge of the various units will stipulate the exact building in which each individual will seek shelter. He will also insure that sufficient rations and water are provided in the various buildings for the personnel assigned shelter in these buildings.
- (3) Test Support Unit has been assigned Buildings 38, 39, 40, 41, 46 and 48 for personnel shelters during a typhoon or tidal wave.

4. EQUIPMENT AND SUPPLIES:

a. Sand bags, picks, shovels, and tie-downs equipment will be procured from the Depot Supply Officer, Task Group 7.2, providing priority

TASK GROUP 7.4
OPRS PLAN NO. 2-54
ANNEX C, APNDX 3

C3-2

demands have been met and they are available.

b. Adjutant, Test Support Unit, will draw from the Commissary Officer, for each individual in the Test Support Unit, one emergency ration and from the Depot Supply Officer sufficient water cans to contain one (1) gallon of water for each man. He will fill and store the water cans and emergency rations in one of the "Pacific" type buildings allotted for use by his unit. Each individual will fill his canteen as an additional supply of fresh water. Emergency water and rations will not be issued to the individuals until ordered by the Commander.

5. PROTECTION OF CRITICAL SUPPLIES AND EQUIPMENT:

a. Aircraft Maintenance Officer:

- (1) After air evacuation missions have been accomplished or recalled, place helicopters and liaison aircraft inside the hangar.
- (2) Manufacture and have on hand sufficient air foil spoilers for all aircraft that will remain in the open.
- (3) Secure all aircraft in the open by tie-downs and/or sand bagging and use air foil spoilers.
- (4) Time permitting, secure special equipment such as starting units, maintenance stands and other special equipment by tie-down or placing in available space in the hangar.
- (5) Take such other steps that time and equipment will permit.

b. Base Supply Officer:

- (1) Place small critical items inside nearest "Pacific" type building.
- (2) Tie down equipment stored in the open as much as possible within time limitations.
- (3) Large special purpose vehicles will be parked on side of Priority Buildings 77 and 600 that faces the approaching storm.
- (4) Take any other steps within his capabilities to protect supplies and equipment.

ANNEX "D"
TO
OPERATIONS PLAN NO. 2-54
NATURAL DISASTER EVACUATION PLAN FOR TEST AIRCRAFT UNIT

HEADQUARTERS
TASK GROUP 7.4, PROVISIONAL
APO 187, c/o Postmaster
San Francisco, California
23 April 1954, 1800H

1. TASK ORGANIZATION:

- a. Test Aircraft Unit Commander, Lt Colonel James A. Watkins
- b. SAC Test Detachment Commander, Colonel Lester E. Richardson

2. GENERAL:

a. This annex sets forth procedures to be followed by the Test Aircraft Unit in the event of high wind or natural disaster warning.

3. CONTROL OF PERSONNEL:

a. All aircraft maintenance personnel report to their respective branch for instructions. Engineering Officers will be in charge of necessary actions. Captain Clairborne F. Bickhan, 1st Lt Allen R. Rodgers, and Mr. Robert T. Hagerty (Civ).

b. All remaining personnel will report to their Unit Orderly Room for assignment to work and Guard Details. 1st Lt Earl R. Groover and Captain Marvin L. Bockman are designated as officers responsible for carrying out directives as required by condition of alert.

c. Officers in charge will notify the Adjutant, Task Group 7.4, of number of personnel available for work details. He will furnish work details as required and post twenty-four hour guard at Command Post.

d. Test Aircraft Unit Command Post will be located in Building 47, phone 3224.

e. Evacuation crews as designated will report to Building 79, Task Group 7.4 Briefing Room for briefing if evacuation is necessary.

f. All non-evacuating personnel will be billeted in Building 47. Ranking officers present will be in charge. Personnel will be allotted space as designated in Appendix 1 to Annex B. Total capacity of Building 47 is 205. Remaining personnel will be billeted in Building 50.

g. 1st Lt Dalton W. McCullar will be responsible for Building 47 and the securing of tents as described in 8b.

4. SECURITY OF AIRCRAFT:

a. All assigned aircraft will be secured as soon as possible if evacuation is not necessary. All aircraft will have full load of fuel and will be chocked and headed into the wind.

b. M/Sgt Sparlin B. Conino will be responsible for installation of spoilers on F-84 aircraft. Spoilers are located in Building 116 (Hangar

TASK GROUP 7.4
OPRS PLAN NO. 2-54
ANNEX D

D-1

5. EVACUATION OF ASSIGNED AIRCRAFT:

a. The following is a list of the aircraft loads in the event of mass evacuation. This load includes the crew as indicated in parenthesis:

- | | | | |
|-----|-----------|------|-------|
| (1) | 15 F-84's | (15) | 15 |
| (2) | 1 B-47 | (4) | 4 |
| (3) | 4 B-36's | (78) | 1,000 |

b. The following is a list of islands to which it will be possible to evacuate the aircraft with the above loads. Facilities of each are listed:

- (1) *Kwajalein Island (350 nautical miles SE) Runway 6800' long, 200' wide; full services. All assigned aircraft.
- (2) *Wake Island (560 nautical miles NNE) Runway 7000' long, 150' wide; full services. All assigned aircraft.
- (3) *Guam Island (1050 nautical miles W) Runway 8500' long, 200' wide; full services.
 - (a) B-36 (Navigation for F-84's)
 - (b) F-84's
 - (c) B-47
 - (d) B-36's
- (4) *Midway Island (1620 nautical miles NE) Runway 8000' long, 350' wide; full services.
 - (a) B-36's
 - (b) B-47
- (5) *Honolulu, T.H. (2130 nautical miles E) Runway 13,100' long, 200' wide; full services.
 - (a) B-36's
 - (b) B-47

* The above marked have approved instrument landing procedure published in Pilot's Handbook, Far East.

6. DESIGNATION OF EVACUATION CREWS:

- | | |
|----------------------------|--|
| a. F-84 Captain Beville | j. F-84 Lt Rowan |
| b. F-84 Captain Bounds | k. F-84 Lt Simpson |
| c. F-84 Captain Ellingson | l. F-84 Lt Schrieber |
| d. F-84 Captain Faktorow | m. F-84 Lt Stacy |
| e. F-84 Captain Wisniewski | n. F-84 Lt Wright |
| f. F-84 Captain Gibson | o. B-36 #1386 Lt Col Cummings and Crew |
| g. F-84 Lt Holmes | p. B-36 #1083 Maj Shelton and Crew |
| h. F-84 Lt Hoover | q. B-36 #1086 Maj Bachmann and Crew |
| i. F-84 Lt McDonnell | r. B-36 Maj Savage and Crew |
| j. F-84 Lt Patterson | s. B-47 Maj Bauer and Crew |

TASK GROUP 7.4
OPRS PLAN NO. 2-54
ANNEX D

D-2

7. DESIGNATION OF "RATION OFFICER":

a. 1st Lt Leslie S. Harding is designated as "Ration Officer" for Test Aircraft Unit.

8. PROTECTION OF TENTS AND EQUIPMENT

a. The following Tent Chiefs are responsible for carrying out procedures as outlined below by personnel of their tent.

S/Sgt McCormick	Q-3	M/Sgt Brannen	T-1
M/Sgt Vidano	Q-4	M/Sgt Womack	T-2
S/Sgt Hanna	Q-6	M/Sgt Burchfield	T-3
S/Sgt Guinn	Q-7	M/Sgt Longuire	T-4
A/1C Alexander	Q-8	M/Sgt Milner	T-5
S/Sgt J.H. Davis	P-2	S/Sgt Miize	T-6
T/Sgt Petersen	P-3	T/Sgt Lee	T-7
M/Sgt Schmuck	P-4	M/Sgt Friesen	U-1
S/Sgt Oesmann	P-5	M/Sgt Kaufman	U-2
S/Sgt Wobster	P-6	M/Sgt Deardoff	U-3
A/2C Brewer	P-7	M/Sgt Stockton	U-4
		Civ Hagerty	O-6 & 7

M/Sgt's Schmuck and Brannen will supervise overall order in latrines used for storage.

b. In order to furnish maximum protection to tents and equipment contained therein, the following procedures will be followed:

- (1) Fold all beds and move into the latrine building normally utilized by the pertinent tent row. These beds will be stacked on the shower room floor to serve as a platform for bedding and personal effects.
- (2) All bedding will be moved into the latrine building and stacked in an orderly manner.
- (3) All personal effects will be packed in containers owned by the individual and stacked in an orderly manner in the latrines.
- (4) Tents will be rolled to the ridge pole of the tent frame with opening of roll being on the under side. Tent rolls will be tied securely to ridge pole.
- (5) Hot locker electrical plugs will be disconnected, the lockers laid down with the doors to the floor and covered with canvas as available.
- (6) Equipment from Orderly Room and Supply tents will be moved to the nearest latrine and stacked in an orderly manner. Typewriters and easily damaged equipment will be protected as necessary to prevent breakage.

c. In the event a latrine becomes full before all equipment from the appropriate area is stored, the equipment will be carried to any other latrine and stored therein.

9. ASSISTANCE IN SAR NECESSITIES:

a. The Test Aircraft Unit will give assistance, both personnel and aircraft, to the SAR Element as necessary.

TASK GROUP 7.4
OPRS PLAN NO. 2-54
ANNEX D

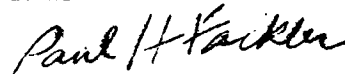
D-3

b. Post Emergency Procedures:

- (1) When emergency abates, First Aid will be administered and the injured will be moved to hospital under direction of 2d Lt Glen Wilson.
- (2) M/Sgt's Schmuck and Brannen will muster all personnel of their units and report to CTG 7.4.
- (3) Captain Robert L. Lewis will initiate damage survey and report findings to CTG 7.4.
- (4) 1st Lt Earl R. Greaver will be responsible for protection of areas from looting and fire.
- (5) Unit will be prepared to rehabilitate all areas as directed.

HOWELL M. ESTES, JR.
Brigadier General, U. S. A. F.
Commander

OFFICIAL:



PAUL H. FACKLER
Lt Colonel, USAF
Director of Operations

TASK GROUP 7.4
OPRS PLAN NO. 2-54
ANNEX D

D-4