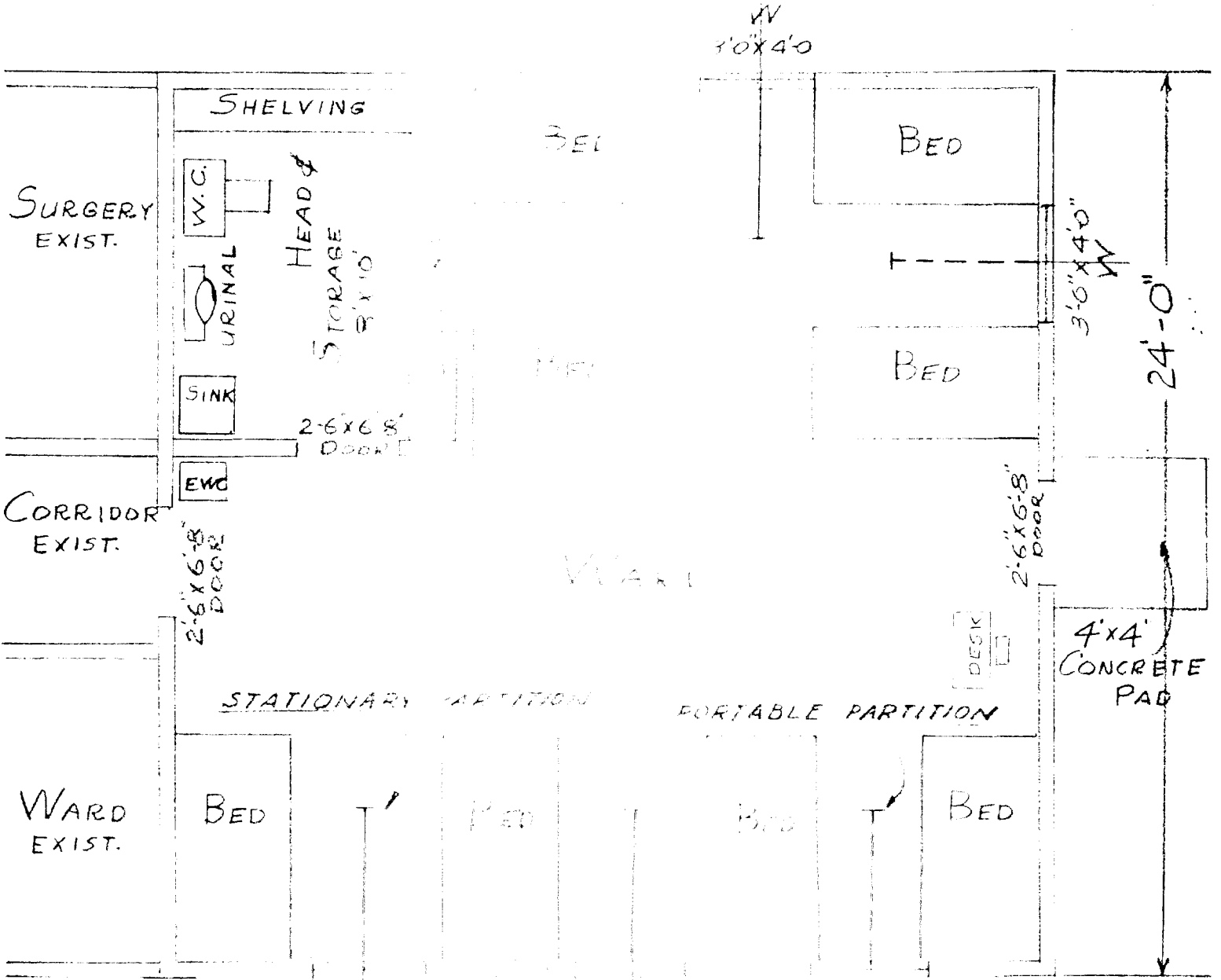


R



24'-0"

10'x4'0"

3'-0" x 4'-0"

2'-6" x 6'-8"

4'x4' CONCRETE PAD

STATIONARY PARTITION

PORTABLE PARTITION

DESK

WARD EXIST.

SURGERY EXIST.

CORRIDOR EXIST.

HEAD & STORAGE 8'x10'

2'-6" x 6'-8" DOOR

2'-6" x 6'-8" DOOR

2'-6" x 6'-8" DOOR

2'-6" x 6'-8" DOOR

W.C.

URINAL

SINK

EWC

W

W

W

W

ADDITION TO INFIRMARY			JOB No.
BLDG. No. 24			
TARE			SHEET
DRAWN BY JMC	DATE 3-20-53	APPROVED	MISC-44
TIMES & NARVEN, ENGR			