

MARSHALL ISLANDS FILE TRACKING DOCUMENT

Record Number: 35

File Name (TITLE): Operation Order CTG 7.2
No 1-53 (Changes No 2)

Document Number (ID): 59432

DATE: 1/1954

Previous Location (FROM): CIC

AUTHOR: JTF7

Additional Information: _____

OrMIbox: 2

CyMIbox: 2

~~SECRET~~

HEADQUARTERS TASK GROUP 7.2
JOINT TASK FORCE SEVEN
APO 187 a/o PM, San Francisco, Calif.

OPERATION ORDER NO. 1-53

REGRADED UNCLASSIFIED ORDER
SEC ARMY BY DAMH PER 89 055-16

23 JUN 1989

REPRODUCTION OF THE SECRET PORTIONS OF THIS DOCUMENT IN WHOLE OR
IN PART IS PROHIBITED EXCEPT WITH PERMISSION OF THE ISSUING OFFICE.

BEST AVAILABLE COPY

CHANGES TO OPERATION ORDER NO. 1-53

Enter Number and Date of Corrections as indicated

Change No.	Dated	Effective	Date Made	Signature
#1	11MVS3	11MVS3	26JAN 54	R Taylor
#2	12JAN 54	12JAN 54	26JAN 54	R Taylor

10A

374-69-5, 5-485

UPR

~~SECRET~~

Headquarters Task Group 7.2
Joint Task Force SEVEN
APO 187 c/o Postmaster
San Francisco, California.
14 November 1953

Changes

(No. 1)

Operation Order CTG 7.2 No. 1-53

1. The following pen and ink corrections and inclosed revised pages constitute changes No. 1 to CTG 7.2 Operation Order 1-53. Revised pages should be inserted in their proper places and the rescinded pages removed and destroyed in accordance with applicable security regulations.

2. Make the following pen and ink corrections:

ANNEX C - page C-1, par 2b - change "21" ocean patrol to read "19" ocean patrol.

APPENDIX II, Annex D, page D-II-1 - Fifth line from the bottom of page. Change "57 ** 72" to read "57 ** 7.1".

3. Remove and destroy rescinded pages and insert revised pages as indicated below:

REMOVE RESCINDED PAGE(S)

INSERT REVISED PAGES

A-II-1

A-II-1

C-2

C-2

C-4

C-4

C-5

C-5

C-6

C-6

D-II-3

D-II-3

D-II-4

D-II-4

D-II-5

D-II-5

OFFICIAL:

EDWARD H. LAHTI
Colonel, Infantry
Commander

Barton Mallory
BARTON J. MALLORY
Major, Arty
S3

Encl.
8 Revised Pages:
A-II-1
C-2
C-4 thru C-6
D-II-3
D-II-4
D-II-5

Edward H. Lahti
BEST AVAILABLE COPY

DISTRIBUTION:

Holders of CTG 7.2 Op Order 1-53

COPY 1 OF 26 COPIES

~~SECRET~~ ~~SECURITY INFORMATION~~

~~SECRET~~

Headquarters Task Group 7.2
Joint Task Force SEVEN
APO 187 c/o Postmaster
San Francisco, California.
11 January 1954

Changes

(No. 2)

Operation Order CTG 7.2 No. 1-53

1. The enclosed revised pages constitute changes No. 2 to CTG 7.2 Operation Order 1-53. Revised pages should be inserted in their proper places in the order, and the rescinded pages removed and destroyed in accordance with applicable security regulations.

2. Insert page for listing changes in a position to constitute cover sheet of plan.

3. Remove and destroy rescinded pages C-I-1 through C-I-6 and insert revised pages C-I-1 through C-I-6 in lieu thereof.

OFFICIAL:

EDWARD H. LAHTI
Colonel, Infantry
Commander

Barton J. Malloy
BARTON J. MALLOY
Major Arty
S3

7 Incl:
Page for listing changes
6 Revised Pages:
C-I-1
C-I-2
C-I-3
C-I-4
C-I-5
C-I-6

DISTRIBUTION:
Holders of CTG 7.2 Op Order 1-53

Changes Made

BEST AVAILABLE COPY

COPY 1 of 26 copies

~~SECRET~~

Orig No 1473

~~SECRET~~

Headquarters Task Group 7.2
Joint Task Force SEVEN
APO 187 c/o Postmaster
San Francisco, California.
13 October 1953

Operation Order CTG 7.2, No. 1-53

INDEX

OPERATION ORDER

Annexes:

- A. Organization
- B. Summary of Tasks
- C. Intelligence
- D. Administrative
- E. Logistical
- F. Fiscal
- G. Communications
- H. Radiological
- I. Estimated Phased Population, Eniwetok Island

COPY 1 OF 26 COPIES

BEST AVAILABLE COPY

475 ~~SECRET SECURITY INFORMATION~~

~~SECRET~~

Headquarters Task Group 7.2
Joint Task Force SEVEN
APO 187 c/o Postmaster
San Francisco, California
15 October 1953

Operation Order CTG 7.2, No. 1-53

Map References:

- a. Azimuthal Equidistant Projection Map, No. 8709, Hydrographic Office, Washington, D.C.
- b. Naval Survey Map, Marshall Islands, Eniwetok Atoll, Nos. 5413, 5206 and 6033, Hydrographic Office, Washington, D. C.
- c. Naval Survey Map, Marshall Islands, Bikini Atoll, No. 6032, Hydrographic Office, Washington, D. C.
- d. Eniwetok Building Layout, 1" - 400', 8 Mar 53.
- e. Sea-Air Rescue Map for Eniwetok Atoll, 4 Jan 53.
- f. Sea-Air Rescue Map for Bikini Atoll, 3 Jul 53.

Task Group Organization: See Annex A, Task Group Organization.

1. GENERAL:

a. Scope of Instruction.

(1) This operation order covers the activities of the Task Group 7.2 during CASTLE buildup phase. Subsequent instructions will be issued for the Operational phase.

(2) "Forward AREA" as the term is used in this operation order is defined as that area encompassing the MARSHALL ISLANDS.

(3) "ENIWETOK/BIKINI Danger Area" as used in this order, is that area encompassing ENIWETOK and BIKINI ATOLLS and bounded by meridians 160°35' - 166°16' east longitude, and the parallels 10°16' - 12°45' north latitude, an area of 150 miles by 350 miles.

(4) This order supplements instructions contained in CJTF 132 Operation Order 4-52 which is still in effect.

b. General Situation.

The Joint Chiefs of Staff (JCS) have directed the Commander Joint Task Force SEVEN (JTF SEVEN) to execute an overseas atomic test (Operation CASTLE) on the ENIWETOK - BIKINI Atolls in early 1954. The build up phase of this operation extends through December 1953; the operational phase of CASTLE is scheduled to commence in January 1954.

(1) Enemy Forces: See Annex C.

(2) Friendly Forces: Elements of all US Military Forces and the AEC and AEC civilian contractor group included in this operation.

BEST AVAILABLE COPY

THIS DOCUMENT CONSISTS OF 48 PAGE(S)
NO. 1 OF 26 COPIES, SERIES

~~SECRET SECURITY INFORMATION~~

~~SECRET~~

Operation Order CTG 7.2, No. 1-53 (Cont'd)

- (a) Scientific Task Group (TG 7.1)
- (b) Naval Task Group (TG 7.3)
- (c) Air Force Task Group (TG 7.4)
- (d) AEC Base Facilities Task Group (TG 7.5)

2. MISSION:

a. Commander Task Group 7.2 has been assigned the following missions.

(1) Continue to discharge the responsibilities of CJTF SEVEN as Atoll Commander (ATCOM, ENIWETOK) in accordance with CJTF 132 Operations Order No. 4-52 and CINPAC Operation Order No. 29-52.

(2) Maintain a mobile defense force for the ground security of ENIWETOK and BIKINI Atolls.

(3) Operate port, base and military communications facilities at ENIWETOK and certain military installations at BIKINI in accordance with existing AEC-DOC agreements.

(4) Operate inter-island and inter-atoll air and surface lift systems to support preparatory operations in the forward area during the CASTLE buildup phase.

(5) Prepare to provide and operate the overall military communications system for handling all forward area Task Force inter-atoll and long haul traffic (exclusive of air operations, air weather and internal naval communications).

(6) See summary of ultimate tasks, Annex B.

3. TASKS FOR SUBORDINATE AND ATTACHED UNITS:

a. Headquarters Detachment, 7126 AU and augmentations:

(1) Provide overhead administrative, and operational support for the ENIWETOK Garrison Force.

(2) Render support to Headquarters JTF SEVEN and TG 7.2 in forward area as required.

b. Port Detachment, 7126 AU:

(1) Maintain and operate the ENIWETOK port facilities to include stevedoring.

c. Service Detachment, 7126 AU and augmentations:

(1) Provide overhead logistical support to the ENIWETOK Garrison Force.

d. Truck Detachment, 7126 AU:

(1) Maintain and operate the ENIWETOK consolidated motor pool.

BEST AVAILABLE COPY 2

~~SECRET SECURITY INFORMATION~~

~~SECRET~~

Operation Order CTG 7.2, No. 1-53 (Cont'd)

e. Military Police Detachment, 7126 AU:

(1) Establish MP posts to control access into Security Areas as established by CJTF SEVEN.

(2) Conduct security patrols (island sweeps) within ENIWETOK-BIKINI atolls as outlined in Annex C.

f. 18 MP CID:

Upon arrival in forward area conduct criminal investigation program as directed by CJTF SEVEN.

g. Provisional CIC Detachment:

Upon arrival in forward area function under operational control of CJTF SEVEN as directed.

h. Communication Security Detachment #1, 8607 AU:

Separate instructions to be issued upon arrival in forward area.

i. Navy Detachment (Boat Pool):

(1) Provide marine support to TG 7.2 as required.

(2) Operate inter-island and inter-atoll surface lift systems to support preparatory operations in the forward area.

(3) Familiarize all LCM crews with landing sites on all islands in the atoll in connection with security operations.

(4) Train boat pool personnel in transportation of elements of TG 7.2 to effect CTG 7.2 Hostile Action Alert Plan No. 1-63.

j. Signal Detachment, 7126 AU:

(1) Operate port, base and military communications facilities at ENIWETOK and certain military installations at BIKINI in accordance with AEC-DOC agreements.

(2) Prepare to provide and operate the overall military communications system for handling all forward area Task Force inter-atoll and long haul traffic (exclusive of air operations, and air weather and internal Navy communications).

k. 4930 TSG:

(1) Operate inter-island and inter-atoll air lift systems to support preparatory operations in the forward area during buildup phase.

(2) Maintain local search and rescue operations.

x. (1) Conduct training as provided in current CTG 7.2 Training Memoranda.

(2) Organize, train and equip personnel as required in CTG 7.2 Hostile Alert Plan 1-63.

3
BEST AVAILABLE COPY

~~SECRET SECURITY INFORMATION~~

~~SECRET~~

Operation Order CTG 7.2, No. 1-53 (Cont'd)

(3) Prepare and rehearse personnel in accordance with CTG 7.2, Natural Disaster Defense Plan, 2-53.

(4) Prepare to execute monitoring and decontamination operations upon order of CTG 7.2.

(5) All personnel will be thoroughly instructed on security and safeguarding of military information.

(6) Be prepared to assume alert status in accordance with CTG 7.2 Hostile Alert Plan 1-53 upon order of CTG 7.2.

4. ADMINISTRATIVE AND LOGISTICAL MATTERS:

Administrative Matters - Annex D applies.

Logistical Matters - Annex E applies.

5. COMMAND AND SIGNAL MATTERS:

a. Communications - Annex G applies.

b. Command Posts.

(1) CTG 7.2 (ATCOM ENIWETOK) Bldg 15.

(2) CO, Naval Detachment Bldg 15.

(3) CO, Coast Guard Det Bldg 116.

(4) CO, 4930 TSG Bldg 90.

EDWARD H. LAHTI
Colonel, Infantry
Commander

ANNEXES:

- A. Organisation
- B. Summary of Tasks
- C. Intelligence and Security
- D. Administrative
- E. Logistical
- F. Fiscal
- G. Communications
- H. Radiological Safety
- I. Estimated Phased Population, Eniwetok Is.

Distribution:

Addressee

Copy Number(s)

CINC PAC
CINC PACFLT
CTG 7.1
CTG 7.2
CTG 7.3

1-2

4

5

6

7

8

BEST AVAILABLE COPY

~~SECRET~~

~~SECRET~~

Operation Order CTG 7.2, No. 1-53 (Cont'd)

CTG 7.4	9
CTG 7.5	10
CO Navy Det, TG 7.2	11
CO Hq Det, 7126 AU	12
CO Sv Det, 7126 AU	13
CO MP Det, 7126 AU	14
CO Trk Det, 7126 AU	15
CO Port Det, 7126 AU	16
CO Sig Det, 7126 AU	17
CO 4930 TSG	18
S1, TG 7.2	19
S2, TG 7.2	20
S3, TG 7.2	21
S4, TG 7.2	22
S5, TG 7.2	23
Resident Engr AEC, Parry Island	24
AG Files	25-26

BEST AVAILABLE COPY

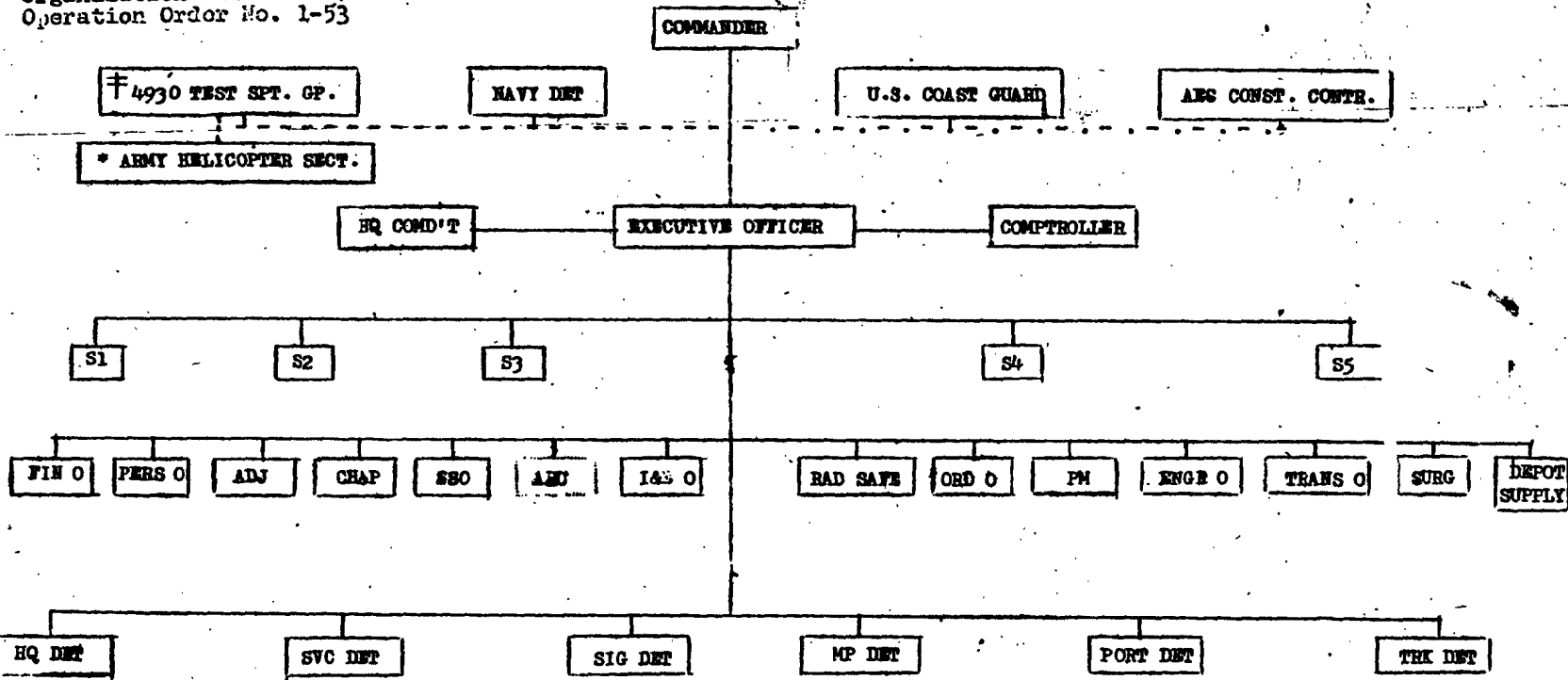
~~SECRET SECURITY INFORMATION~~

Appendix I to Annex A, TG 7.2
 Organization Chart CTG 7.2
 Operation Order No. 1-53

ORGANIZATION CHART

TEST AV

TASK GROUP 7.2



LEGEND:

- OPERATIONAL CONTROL
- COMMAND
- BASE FACILITIES SUPPORT
- * ASSIGNED TO SVC DET
- † PASSES TO COMMAND OF CTG 7.4 DURING OPERATIONAL PHASE

SECRET

SECRET SECURITY INFORMATION

~~SECRET~~

Headquarters Task Group 7.2
Joint Task Force SEVEN
APO 187 o/o Postmaster
San Francisco, California
13 October 1953

Annex A to Operation Order CTG 7.2, No. 1-53.

ORGANIZATION

1. Task Group 7.2 is under the full operational control of CJTF SEVEN at all times.
2. The composition and structure of Task Group 7.2 is in accordance with the following directives of CJTF SEVEN:
 - a. Operational Order 4-52 (then CJTF 132).
 - b. Operation Order 1-53.
3. The Army elements of TG 7.2 are organized pursuant to GO 3 Headquarters, TG 7.2, JTF SEVEN dated 15 July 52 (auth: GO 14, JTF SEVEN, dated 10 July 53).

OFFICIAL:

EDWARD H. LAHTI
Colonel, Infantry
Commander

Barton Mallory
BARTON J MALLORY
Major Arty
SS

Appendices:

- I. Organisation Chart TG 7.2
- II. Troop list

BEST AVAILABLE COPY

A-1

~~SECRET SECURITY INFORMATION~~

~~SECRET~~

Headquarters Task Group 7.2
Joint Task Force SEVEN
APO 187 c/o Postmaster
San Francisco, California
13 October 1953

Appendix II to Annex A

Troop List - CTG 7.2 Operation Order No. 1-53

<u>MAJOR COMPONENT</u>	<u>PEAK STRENGTH</u>		<u>REMARKS</u>
	<u>OFFICER</u>	<u>EM</u>	
7126th AU (T/D)	74	993	Communications elements of 7126th AU to be at full strength by 1 Dec. 1953
*Hq & Hq Det., 7126th AU	(29)	(159)	
*Svc Det., 7126th AU	(20)	(218)	
*Sig Det., 7126th AU	(9)	(155)	
*MP Det., 7126th AU	(7)	(205)	
*Port Det., 7126th AU	(5)	(132)	
*Truck Det., 7126th AU	(4)	(124)	Requirement for DUKW operators to support TG 7.5 operations at Bikini not anticipated.
18th MP CID	1	4	
Prov. CIC Det	8	0	
Communications Security Det. #1, 8607th AU	4	31	This unit to be on site approximately 1 Jan 54.
Boat Pool (Navy Det TG 7.2)	1	21	
*3 Army H-13 Helicopters	(4)	(5)	To go under operational control of CTG 7.4 during operational phase.
TOTAL	88	1049	

*This strength is included in Svc Det, 7126th AU figures and is, therefore, not included in the total.

OFFICIAL:

EIJARD H. LAHTI
Colonel, Infantry
Commander

Barton J. Malloy
BARTON J. MALLOY
Major Arty
S3

BEST AVAILABLE COPY

A-11-1

Revised 14, Nov 53

~~SECRET SECURITY INFORMATION~~

~~SECRET~~

Headquarters Task Group 7.2
Joint Task Force SEVEN
APO 157 c/o Postmaster
San Francisco, California
13 October 1953

Annex B to CTG 7.2 Operation Order 1-53

SUMMARY OF TASKS

1. The following is a summary of continuing tasks to be accomplished by the Army Task Group during both the CASTLE buildup phase and the onsite operation phase. The Commander, TG 7.2 will:

a. Continue to discharge the responsibilities of CJTF as ATCOM, ENINETOX with respect to entry into the ENINETOX/BIKINI area and ground defense of those atolls.

b. Be prepared to deploy elements of the atoll security force to reinforce the BIKINI garrison in the event of emergency.

c. Continue to operate all base facilities at ENINETOX ISLAND, except those specifically allocated to CTG 7.4 and CTG 7.5, in accordance with existing agreements.

d. Provide communications facilities at BIKINI ATOLL as necessary to support AEC operations at the atoll.

e. Conduct port and stevedoring operations at ENINETOX ATOLL with stevedoring assistance made available by CTG 7.5 in accordance with existing agreements.

f. Take measures to prevent unauthorized entry into exclusion areas, coordinating this activity with CTG 7.5.

g. Operate and maintain a TG 7.2 boat pool at ENINETOX, taking cognizance of the Task Force Commander's concept of coordinated boat pool operations set forth in paragraph 8 of Annex B, Operation Order No. 1-53, JTF SEVEN.

2. During the CASTLE buildup phase, CTG 7.2 will:

a. With capabilities provided by CTG 7.5, operate a TG 7.2 boat pool at ENINETOX and an inter-atoll surface lift system within the forward area. Be prepared to relinquish operational control of the inter-atoll surface lift system upon commencement of the operational phase, as directed by CJTF SEVEN.

b. With capabilities provided by CTG 7.4, operate an inter-island airlift system at ENINETOX ATOLL and BIKINI ATOLL and an inter-atoll airlift system to support Joint Task Force elements in the forward area, and operate minimum airstrip facilities at BIKINI ATOLL as necessary to support TG 7.1 and TG 7.5 operations at the atoll. Be prepared to relinquish operational control of these activities upon commencement of the operational phase, as directed by CJTF SEVEN.

c. Maintain local search and rescue capabilities within the cognizance of the SAR area Commander.

d. Prepare to support CTG 7.1 radiological contamination facilities.

B-1
BEST AVAILABLE COPY

~~SECRET SECURITY INFORMATION~~

~~SECRET~~

Annex B to CTG 7.2 Operation Order 1-53 (Cont'd)

e. Conduct liaison with CTG 7.8 to the end that support requirements for the preparation of ENIWETOK and the development of BIKINI are met.

3. In the accomplishment of these ultimate tasks during the operational phase, CTG 7.2 will:

a. Provide and operate the overall military communications system for handling of all forward area Task Force inter-atoll and long haul traffic (exclusive of air operations, air weather and internal naval communications).

b. Provide support services for Headquarters, JTF SEVEN as required.

c. Be prepared, upon directive from CJTF SEVEN, to conduct emergency post-shot evacuation from ENIWETOK ATOLL of all personnel based on ENIWETOK ISLAND.

d. Provide monitoring and decontamination services indicated in Annex H.

e. Support TG 7.1 as directed by CJTF SEVEN.

f. Assure the early initiation of security clearances for participating personnel by liaison with parent agencies and commands.

g. Require all participating personnel to undergo comprehensive indoctrination in the responsibility toward security.

h. Assure by liaison with parent agencies and commands that all personnel to be station on ENIWETOK and BIKINI, to the extent practical, are familiarized with appropriate individual weapons prior to departure from the Zone of Interior.

i. Assure that emphasis is placed on radiological safety training operations.

j. Assure maximum economy of funds and economic utilization of military forces made available for this operation.

k. Maintain detailed records of Task Group activity and submit reports in accordance with current Joint Task Force directives. Prepare and forward to CJTF SEVEN Task Group Operations Plans and Orders covering the CASTLE buildup phase.

l. Keep CJTF SEVEN informed as to progress of Task Group development, requesting assistance where required in effecting agreements with participating agencies and commands.

m. Take cognizance of the ultimate tasks indicated heretofore and direct the efforts of the Task Group toward capability for this operation.

OFFICIAL:

Barton J. Mallory
BARTON J. MALLORY
Major Arty
S3

EDWARD H. LAHFI
Colonel, Infantry
Commander

BEST AVAILABLE COPY

~~SECRET SECURITY INFORMATION~~

~~SECRET~~

Headquarters Task Group 7.2
Joint Task Force SEVEN
APO 187 c/o Postmaster
San Francisco, California
13 October 1953

Annex C to CTG 7.2 Operation Order No. 1-53

INTELLIGENCE, SECURITY AND PUBLIC INFORMATION

- Map References:
- a. Azimuthal Equidistant Projection Map, No. 6709, Hydrographic Office, Washington, D.C.
 - b. Naval Survey Map, Marshall Islands, ENIWETOK ATOLL, Nos. 5413, 5205 and 6033, Hydrographic Office, Washington, D.C.
 - c. Naval Survey Map, Marshall Islands Bikini Atoll, No. 6032, Hydrographic Office, Washington, D.C.
 - d. Eniwetok Building Layout, 1" = 400', 6 Mar 53
 - e. Sea-Air Rescue Map for Eniwetok Atoll, 4 Jan 53
 - f. Sea-Air Rescue Map for Bikini Atoll, 3 Jul 53

1. Intelligence - General

- a. No interference is expected from an overt enemy during Operation CASTLE since the use of force or direct open observation from a point well within the ENIWETOK-BIKINI danger area would involve consequences out of proportion to the value of the results to be obtained from such action.
- b. The country having the greatest capability of compromising the security of Operation CASTLE is the Soviet Union.
- c. In the event of an outbreak of war the entire concept of the operation would be changed materially.

2. Summary of Enemy Capabilities

a. It is considered that interference with the mission or compromise of its activities could be effected by espionage, sabotage, overt action by vessel or aircraft, raids, observation, unauthorized instrumentation and declaration of war.

b. Naval Capabilities. The USSR has ¹⁹ 21 ocean patrol and 37 medium range type submarines in the Pacific area. It is estimated that at least 4 to 6 ocean patrol submarines could be maintained in the ENIWETOK-BIKINI operational area indefinitely and for short periods this number could be increased. Unobserved submarine approach within 1 mile of important islands of these atolls is possible.

c. Air Capabilities

(1) Aerial photo and radiological reconnaissance of the ENIWETOK BIKINI area from Far East bases (SAKHALIN or the KURILES) are within Soviet capabilities. With prior access to CASTLE plans, reconnaissance flights could be properly timed to permit aircraft to remain in the target area for a brief period. The TU-4, modified for long range reconnaissance, could accomplish this without refueling. Assuming that the Soviets have developed refueling techniques equal to those of

C-1

BEST AVAILABLE COPY

~~SECRET SECURITY INFORMATION~~

~~SECRET~~

Annex C to CTG 7.2 Operation Order No. 1-53 (Cont'd)

the U.S., one outbound refueling would extend the time over target to over 4 hours. There is no evidence, however, that the Soviets have developed refueling capabilities. The Third Long Range Air Army, stationed in the Far East, is presently estimated to have a TO/E strength of approximately 220 TU-4s. No aircraft of this type is known to be modified for long range reconnaissance.

(2) The only Soviet aircraft known to have greater range potentiality than the TU-4 is the Type 31 prototype heavy bomber which was observed in flight for the first time in the July 1951 Aviation Day air show in Moscow. This aircraft, if equipped with the JU-022 turboprop engine, would have a combat radius of about 3500 nautical miles and considerably in excess of this if the combat load were replaced with fuel. A few aircraft are probably available having range capabilities comparable to the Type 31. It is entirely possible that the Soviets might equip such an aircraft for photo and radiological reconnaissance if a sufficiently high priority exists for this requirement.

3. Conclusions

Espionage, sabotage, observation and unauthorized instrumentation are considered most likely to occur under conditions existing today. The declaration of war, overt action by vessels or aircraft and raids are less likely possibilities which could take place in the event of open hostilities between the U.S. and the USSR.

4. Security Responsibility

a. Security of classified information is the normal responsibility of any commander but this responsibility must be reevaluated in Operation CASTLE where the operation is dealing with atomic energy, a development which played an important part in terminating World War II and which constitutes such importance that it has been regulated, controlled and protected by Federal law. The responsibility of each individual in properly safeguarding classified information concerning atomic energy and in preventing its compromise by careless talk or correspondence must be understood by all military ranks and civilians.

b. CTG 7.2 is responsible for proper security within TG 7.2 and for security of classified information and areas, including entry, within the forward area as directed by CJTF SEVEN. The intelligence officer (S2) TG 7.2 discharges for the commander the function of enforcement of security measures and controls, exercising operational control of all Military Police units assigned to TG 7.2 for this purpose. Military Police Posts will be established as listed in Appendix I, this annex.

5. General Conception.

a. The ENIETOK-BIKINI area of operations will be closed to all personnel except those participating. Access to this area will be in accordance with regulations promulgated by CINCPAC Serial 020. Certain areas within the ENIETOK-BIKINI operational area will be designated in accordance with degrees of security required.

b. Personnel participating in the operation will be cleared for loyalty and security in accordance with the varying degrees of responsibility.

C-2

Revised 14, Nov 53

BEST AVAILABLE COPY

~~SECRET SECURITY INFORMATION~~

~~SECRET~~

Annex C to CTG 7.2 Operation Order No. 1-53 (Supt'd)

c. The ENIWETOK-BIKINI area of operations is under the general protection of CINCPAC

d. Regulations governing security published by the Department of Defense and Atomic Energy Commission continue to apply to members of Joint Task Force SEVEN.

- (1) AR 380-5
OPNAV Instructions 551.1 For appropriate units
AFR 205-1
GM Security Bulletins
- (2) Hq JTF SEVEN Memoranda
Espionage Act Apply to all members
Atomic Energy Act of 1946 Joint Task Force SEVEN
AEC-DOD Classification Criteria

e. CTG 7.2 is responsible for security training of members of his command. All personnel will be required to pass a basic security examination which will be prepared and distributed by Headquarters, Joint Task Force SEVEN.

f. Each Basic Detachment of TG 7.2 will have an officer designated as security officer, whose primary duties will be security training, enforcement of security regulations and supervising the administering, grading and recording the results of security examinations. Examination results will be forwarded to S2, TG 7.2 as soon as recorded.

6. Personnel Clearances. CTG 7.2 is responsible that all TG 7.2 personnel participating in Operation CASTLE are cleared in accordance with CJTF SEVEN Memoranda.

7. Classification Criteria. A "Classification Guide for Operation CASTLE" concerning all pertinent classification criteria will be issued to the Task Group Commanders for their guidance.

8. Travel Security Control.

a. CINCPAC Serial 020, dated 1 April 1952, outlines the requirements for entrance to the ENIWETOK-BIKINI operational or closed area. (The land areas of Eniwetok and Bikini Atolls, the water areas of the respective lagoons and water areas within three (3) miles to the seaward side of the respective land areas.)

b. The Commander, TG 7.2 is responsible that individuals arriving at ENIWETOK-BIKINI operational area who have not been cleared for entry under CINCPAC Serial 020 are restricted to ENIWETOK ISLAND pending proper clearance. Isolation and control of such personnel will be in accordance with current CINCPAC directives and will be accomplished by the Military Police.

c. Travel within the ENIWETOK-BIKINI operational area will be controlled by a badge system for access to the higher classified security areas.

d. All persons who are authorized to enter the ENIWETOK-BIKINI operational area will be initially cleared under the provisions of CINCPAC Serial 020. Task Group Commanders may authorize reentry without recourse to CINCPAC.

C-3

BEST AVAILABLE COPY

~~SECRET SECURITY INFORMATION~~

Annex C to CTG 7.2 Operation Order No. 1-53 (Cont'd)

9. Security Areas

a. The "ENIWETOK-BIKINI Danger Area", as defined on page 1, paragraph 1a(3) of this operation order, consists of three (3) classified area categories, as defined by AEC CM Security Bulletin No. 18, for purposes of security enforcement. These areas are:

(1) Exclusion Area. A security area containing a security interest which is of such nature that access to this area constitutes, for all practical purposes, access to the security interest contained therein - i.e., a shot site or assembly area.

(2) Limited Area. A security area containing a security interest in which area controlled movement would permit access to the security interest contained therein; but such access may be prevented by escort and other internal restrictions and controls - i.e., PARRY ISLAND.

(3) Controlled Area. A security area adjacent to or encompassing limited or exclusion areas and within which area uncontrolled movement does not permit access to a security interest, and which is designated for the principal purpose of providing administrative control, safety or a buffer area of security restrictions for limited or exclusion areas i.e., ENIWETOK Closed Area.

b. Exclusion and limited areas are established by CJTF SEVEN. Internal security requirements and access to these areas are determined by CTG 7.5. The Commander, TG 7.2, is responsible for the guarding of these areas, and for admission of only those persons authorized by CJTF SEVEN.

c. The closed (controlled) area has been established by CINCPAC. Admittance to this area is authorized by CINCPAC upon recommendation of CJTF SEVEN. The internal security of this area is the responsibility of ATCOM ENIWETOK.

d. Clearance requirements for access to the security areas are designated as follows:

<u>SECURITY AREA</u>	<u>JTF CLEARANCE REQUIREMENTS</u>	<u>AEC CLEARANCE REQUIREMENTS</u>
Exclusion Area	"Q" Clearance and Access List.	"Q" Clearance and Access List.
Limited Area	"Q" Clearance; Top Secret Military Clearance; Secret Military Clearance under escort	"Q" Clearance; "P" approval under escort (without access to Restricted Data); Top Secret Clearance (provided no access to Restricted Data from AEC contractor personnel); Secret military Clearance under escort.
Controlled Area	Good Security Risk (CINCPAC Ser. 020)	"P" approval or good security risk (CINCPAC Serial 020)

10. Badge System. A badge system will be established to control travel to the exclusion and limited areas. The Commander, TG 7.2, will be responsible for controlling and enforcing this system on order promulgated by CJTF SEVEN. The Commander, TG 7.5, is responsible for procurement and issue of badges as set forth in CJTF SEVEN security memoranda. The badge system will become effective on or about 1 January 1954.

BEST AVAILABLE COPY

~~SECRET~~

Annex C to CTG 7.2 Operation Order No. 1-53 (Cont'd)

11. Contraband

a. Unless authorized by specific orders to individuals, possession of items of material listed below in the ENIWEETOK-BIKINI area is prohibited and the items considered contraband.

- (1) All photographic equipment.
- (2) All equipment adaptable for use in either visual or electronic communications.
- (3) All optical equipment.
- (4) All materials with explosive capabilities.
- (5) All weapons.
- (6) All drugs and intoxicating beverages.

b. Travel orders will include a statement of the articles of contraband.

c. Items of contraband will be confiscated and report of the circumstances made to CJTF SEVEN.

d. Film found in possession of unauthorized persons will be confiscated, forwarded to CTG 7.5 for processing and classification and a report will be made to CJTF SEVEN.

12. Photography. Only official photography is authorized in the ENIWEETOK-BIKINI operational area. All official photography will be reviewed by the Joint Task Force SEVEN Classification Officer for proper classification and determination of "RESTRICTED DATA". Prior to review and final classification by the classification officer, all photography will be given a preliminary classification. The preliminary classification will in no case be lower than SECRET-SECURITY INFORMATION for scientific and non-technical photography and RESTRICTED-SECURITY INFORMATION for administrative photography.

13. Communications Security. The security and monitoring of communications will be accomplished under the direction of CJTF SEVEN.

14. Counter-Intelligence. The Commander, JTF SEVEN, will have operational control of all CIC units. The Commander, TG 7.4 will have operational control of all OSI agents whose activities will, in general, be confined to Air Force matters.

15. Security Patrols. The Commander, TG 7.2 is responsible for conducting the necessary security patrols within ENIWEETOK-BIKINI ATOLLS. Air and sea security patrols outside the ENIWEETOK-BIKINI ATOLLS will be the responsibility of CTG 7.3.

a. Security sweeps of islands of ENIWEETOK ATOLL will be conducted by Military Police personnel as follows:

- (1) Air Surveillance sweep of all islands of atoll once weekly.
- (2) Ground sweep, transported by helicopter or DUKW and LCM of all islands radiologically safe, a minimum of once monthly.

BEST AVAILABLE COPY

~~SECRET SECURITY INFORMATION~~

~~SECRET~~

Annex C to CTG 7.2 Operation Order No. 1-53 (Cont'd)

b. On instructions from CTG 7.2 similar sweeps will be conducted at BIKINI ATOLL.

c. In addition, 4930th Test Support Group will conduct air sweeps of ENIVETOK ATOLL three times weekly in accordance with current policy.

16. Inspections. Inspections will be conducted upon arrival of personnel and periodically thereafter to detect security violations and contraband and to insure the use of proper identification credentials and proper safeguarding of classified matter. Individuals are responsible for reporting security violations which come to their attention.

17. Security Violations - Compromise of Classified Material. S2, TG 7.2 is responsible to CTG 7.2 for investigating and reporting immediately all violations of security regulations which occur within the jurisdiction of CTG 7.2. Periodic reports will be submitted until the case is closed to CJTF SEVEN, ATTN J2. Investigations should be conducted by CIC personnel obtained through CJTF SEVEN whenever possible. The Provost Marshal will render assistance, as requested.

18. Public Information.

a. TG 7.2 does not release information to the public.

b. Release to the press in regard to Joint Task Force SEVEN operations and activities are made only by the AEC or DOD.

c. Personnel of TG 7.2 are prohibited from releasing any information for publication, in regard to the Joint Task Force or its activities. They must neither confirm nor deny any articles appearing in the press.

d. Department of Defense-Atomic Energy Commission releases, when made, will be disseminated to units of Joint Task Force SEVEN through normal communication channels at the earliest possible time.

OFFICIAL:

EDWARD H. LAHTI
Colonel, Infantry
Commander

Hugh B. Wandel
HUGH B. WANDEL
Major, Arty
S2

Appendix I
Military Police Requirements

C-6

Revised 14, Nov 53

BEST AVAILABLE COPY

~~SECRET SECURITY INFORMATION~~

Appendix 1 To Annex C CTG 7.2 Operation Order 1-53

ENIWETOK ISLAND MAIN BODY MILITARY POLICE COMPANY

<u>AEC Requirements</u>	<u>Active</u>		<u>Number Of Posts</u>	<u>Hours Manned</u>	<u>MPs</u>	<u>Remarks</u>
	<u>From</u>	<u>To</u>				
None						
<u>Military Requirements</u>						
Air Strip	15 Jan 54	End of Opn	1	12	2	
MATS Terminal	15 Jan 54	End of Opn		24	4	- Four men assigned permanent duty here. (This will provide two patrols at night and one patrol during day).
Motor Patrol (night & day)	15 Jan 54	End of Opn	2	24	8	
Motor Patrol (night)	15 Jan 54	End of Opn	2	12	4	
POL Guard	15 Jan 54	End of Opn	1	12	2	
Sweeps (total for all Eniwetok Islands)	15 Jan 54	End of Opn			5	
First Sergeant	15 Jan 54	End of Opn			1	
Desk Sergeant	15 Jan 54	End of Opn	1	24	4	
Operations Sergeant	15 Jan 54	End of Opn			1	
Personnel Clerk	15 Jan 54	End of Opn			1	
Supply Clerk	15 Jan 54	End of Opn			1	
Mall Clerk	15 Jan 54	End of Opn			1	
Armorer	15 Jan 54	End of Opn			1	
Photo-IF Clerk	15 Jan 54	End of Opn			1	
Escort Duty	15 Jan 54	End of Opn			2	- Required to escort non-cleared personnel to Parry Island and Eberiru (Site RUBY)
Communications Sergeant	15 Jan 54	End of Opn			1	
117 Compound	15 Jan 54	End of Opn			4	- Not yet requested by CTG 7.5; requirement indicated in letter showing physical requirements.
Total MPs					<u>43</u>	

SECRET

Revised 11 54

SECRET

BEST AVAILABLE COPY

Appendix 1 To Annex C CTG 7.2 Operation Order 1-53 (Cont'd)

FARRY ISLAND

<u>AEC Requirements</u>	<u>Active</u>		<u>Number Of Posts</u>	<u>Hours Manned</u>	<u>MPs</u>	<u>Remarks</u>
	<u>From</u>	<u>To</u>				
Assembly Area Excl Area	15 Jan 54	End of Opn	4	24	16	
GMR Compound Cryogenic plant	15 Jan 54	End of Opn	2	24	8	
Control Compound	23 Mar 54	29 Mar 54	1	24	4	
Administrative Compound:				24	4	
East Gate	15 Jan 54	End of Opn	1			
North Gate	15 Jan 54	End of Opn	1	12	2	
Walking Patrol (night)	15 Jan 54	End of Opn	1	12	2	
Corridor (day only)	15 Jan 54	End of Opn	1	9	2	
Personnel Pier	15 Jan 54	End of Opn	1	24	4	
Freight Pier	15 Jan 54	End of Opn	1	24	4	
Marine Ramp	15 Jan 54	End of Opn	1	24	4	
Air Strip	15 Jan 54	End of Opn	1	12	2	
Motor Patrol (night & day)	15 Jan 54	End of Opn	1	24	4	- This will provide two patrols at night and one patrol during day.
Motor Patrol (night)	15 Jan 54	End of Opn	1	12	2	
<u>Military Requirements</u>						
First Sergeant	15 Jan 54	End of Opn			1	
Desk Sergeant	15 Jan 54	End of Opn	1	24	4	
Clerk	15 Jan 54	End of Opn			1	
Escort	15 Jan 54	End of Opn			3	
Sweep	15 Jan 54	End of Opn			1	- Sweep personnel for all Eniwetok Islands are shown in Eniwetok MP Detachment
LSD - Off Shore for shot 4	20 Jan 54	18 Mar 54	1	24	4	
			Total MPs		72	

SECRET

Revised 11 Jan 54

SECRET

BEST AVAILABLE COPY

Appendix 1 To Annex G CTG 7.2 Operation Order 1-53 (Cont'd)

EBERIRU ISLAND - SITE ROBY

<u>AEC Requirements</u>	<u>Active</u>		<u>Number Of Posts</u>	<u>Hours Manned</u>	<u>MPs</u>	<u>Remarks</u>
	<u>From</u>	<u>To</u>				
Pier	15 Jan 54	29 Mar 54	1	24	4	
Zero Compound Excl Area	6 Jan 54	29 Mar 54	3	24	12	
Motor Patrol	15 Jan 54	29 Mar 54	1	24	4	
Air Strip - Aomon	15 Jan 54	29 Mar 54	1	12	2	
<u>Military Requirements</u>						
Desk Sergeant	15 Jan 54	29 Mar 54	1	24	4	Senior Desk Sergeant will also be acting 1st Sgt.
Clerk & Escort	15 Jan 54	29 Mar 54			1	
Sweep	15 Jan 54	29 Mar 54			1	
			Total MPs		<u>28</u>	

~~SECRET~~

BEST AVAILABLE COPY

Appendix 1 To Annex C CIG 7.2 Operation Order 1-53 (Cont'd)

BIKINI - ENINMAN ISLAND - SITE TARE

<u>AEC Requirements</u>	<u>Active</u>		<u>Number Of Posts</u>	<u>Hours Manned</u>	<u>MPs</u>	<u>Remarks</u>	
	<u>From</u>	<u>To</u>					
Zero Compound Excl Area	15 Jan 54	End of Opn	3	24	12		
Administration Building	15 Jan 54	End of Opn	1	24	4		
Air Strip	15 Jan 54	End of Opn	2	24	8		
Mole Pier Ramp	15 Jan 54	End of Opn	2	24	8		
Recorder Stations	15 Jan 54	End of Opn	2	24	8		
Motor Patrol (Night)	15 Jan 54	End of Opn	2	12	4		
Motor Patrol (day)	15 Jan 54	End of Opn	1	12	2		
<u>Military Requirements</u>							
Desk Sergeant	15 Jan 54	End of Opn	1	24	4		
First Sergeant	15 Jan 54	End of Opn			1		
Arm & Supply Clerk	15 Jan 54	End of Opn			1		
Administrative Clerk	15 Jan 54	End of Opn			1		
Escort	15 Jan 54	End of Opn			3		
Sweep	15 Jan 54	End of Opn			2		
					<u>TOTAL MPs</u>	<u>58</u>	

~~SECRET~~

Revised 11 Jan 54

BEST AVAILABLE COPY

Appendix 1 To Annex C CTG 7.2 Operation Order 1-53 (Cont'd)

BIKINI - MANU ISLAND - SITE CHARLIE

<u>AEC Requirements</u>	<u>Active</u>		<u>Number Of Posts</u>	<u>Hours Manned</u>	<u>MPs</u>	<u>Remarks</u>
	<u>From</u>	<u>To</u>				
Pier or Ramp	15 Jan 54	1 Mar 54	1	24	4	
Zero Compound	23 Feb 54	1 Mar 54	2	24	8	- Seven day requirement only.
Helicopter Pad	15 Jan 54	1 Mar 54	1	12	2	
<u>Military Requirements</u>						
Desk Sergeant	15 Jan 54	1 Mar 54	1	24	4	- Senior Desk Sergeant also acts as 1st Sergeant.
Escort & Clerk	15 Jan 54	1 Mar 54			1	- Clerk performs additional duty as escort.
Sweep	15 Jan 54	1 Mar 54			1	
			Total MPs		<u>20</u>	

SECRET

SECRET

BEST AVAILABLE COPY

Appendix 1 To Annex C CTG 7.2 Operation Order 1-53 (Cont'd)

BIRINE -- ENYG -- SITE NAN

<u>Requirements</u>	<u>Active</u>		<u>Number Of Posts</u>	<u>Hours Manned</u>	<u>MPs</u>	<u>Remarks</u>
	<u>From</u>	<u>To</u>				
<u>er or Ramp</u>	15 Jan 54	15 Apr 54	1	24	4	
<u>Control Building #70</u>	26 Feb 54	15 Apr 54	1	24	4	- Not a full time post. Only manned as required by CTG 7.5.
<u>Military Requirements</u>						
<u>ak Sergeant</u>	15 Jan 54	15 Apr 54	1	24	4	- Senior Desk Sergeant, also acts as 1st Sergeant.
<u>art & Clerk</u>	15 Jan 54	15 Apr 54			1	- Additional duties as clerk, supply & armorer.
	15 Jan 54	15 Apr 54			1	
			<u>Total MPs</u>		<u>14</u>	

0-1-6
Revised 11 Jan 54

SECRET

~~SECRET~~

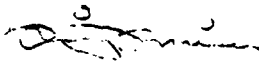
Annex D to CTG 7.2 Operation Order No. 1-53

ADMINISTRATIVE

Administrative instructions applicable are contained in CJTF
132 Operations Order No. 4-52, CJTF SEVEN Operations Order No. 1-53,
Joint Task Force SEVEN and Task Group 7.2 SOP's.

OFFICIAL:

EDWARD H LAHTI
Colonel, Infantry
Commander


RILEY P MINER
CWO, USA
Adjutant

APPENDICES:

- I Billeting Plan, Eniwetok Island
- II Allocation of Buildings, Eniwetok Island
- III Building Allocation Chart, Eniwetok Island

BEST AVAILABLE COPY

~~SECRET SECURITY INFORMATION~~

Headquarters Task Group 7.2
Joint Task Force SEVEN
APO 187 c/o Postmaster
San Francisco, California
13 October 1953

Appendix I to Annex D, CTG 7.2 Operation Order No. 1-53

BILLETING PLAN, ENIWETOK ISLAND

1. PURPOSE: The purpose of this appendix is to set forth the Billeting Plan of Task Group 7.2 during the build-up phase of Operation CASTLE.
2. GENERAL: The billeting of personnel on Eniwetok during the build-up phase will be governed by allocations made by Joint Task Force SEVEN which limits the amount of personnel that each Task Group is authorized to have ashore. During the maximum population period, the total number of personnel from all elements of the Joint Task Force will be 2988.
3. AUTHORIZED POPULATION: The following personnel strengths have been authorized the task group by CJTF SEVEN for personnel quartered on Eniwetok during build-up and operational periods.

Task Group 7.1	95
Task Group 7.2	967
Task Group 7.3	165
Task Group 7.4	1651
Task Group 7.5	40
Official Observers	50
Weather Central	20
Total	<u>2988</u>

a. Billeting areas are indicated on Building Allocation Chart, Appendix III, Annex D.

4. EM AND OFFICER ACCOMODATIONS:

a. Officers

(1) Tents that are used for officer personnel will allow for the accomodation of six officers per tent. A hot locker will be provided each officer for storage and clothing space.

(2) Officers quartered in the small type aluminum buildings will be assigned two per room. Hotlocker and a desk is provided in each room.

(3) The large type aluminum building will have four to six officers to each room depending upon the flexibility that will be needed in order to furnish accomodations for officers arriving and departing. A hotlocker will be provided for each officer and a table with two chairs per room.

b. Enlisted Personnel

(1) All enlisted personnel living in tents will be billeted at a rate of nine men per tent.

(2) Each tent will have a hotlocker, weapons locker, and table with two chairs.

D-I-1

BEST AVAILABLE COPY

~~SECRET~~

Appendix I to Annex D, CTG 7.2 Operational Order No. 1-53 dated 13 October

(3) Enlisted non quartered in the large type aluminum building will be assigned eight non to each room.

5. BILLETING FEES: A billeting fee sufficient to defray the cost of laundry (bod linen) and orderly service will be collected from each officer or civilian occupying officer type quarters. Collections are to be made between the first and fifth of each month or prior to departure time of individuals leaving this installation.

a. Personnel occupying officer type quarters on a transient basis, will be charged at a rate of 50 cents per day not to exceed \$7.50 for periods up to 29 days. Personnel remaining at this station for 30 days or more will be charged the regular monthly assessment of \$3.00 per month or major fraction of a month.

b. There will not be any charge for transient enlisted personnel.

c. Personnel laundry service can be obtained on a cash and carry basis at the Post Laundry. A pick-up and delivery service will be provided if desired.

6. PERSONNEL STRENGTH TASK GROUP 7.2: Detachment of Task Group 7.2 have been allocated space for personnel quarters as indicated below. Consideration has been taken of technical personnel who are to be redeployed to adjacent islands and will not require accommodations on Eniwetok Island during the operational phase.

Hq Det	159
Svc Det	218
Sig Det	132
MP Det	154
Port Det	132
Truck Det	124
Attached Comm. Security	
Monitoring Det	35
CIC Det	8
18th CID Det	5
Total	<u>967</u>

OFFICIAL:

EDWARD H. LAHTI
Colonel, Infantry
Commander

Sumner R. Nelson
SUMNER R. NELSON
Maj, Inf
Hq Comd't

D-I-2

BEST AVAILABLE COPY

~~SECRET SECURITY INFORMATION~~

~~SECRET~~

Headquarters Task Group 7.2
Joint Task Force SEVEN
APO 187 c/o Postmaster
San Francisco, California
13 October 1953

Appendix II to Annex D, CTG 7.2 Operation Order No. 1-53

ALLOCATION OF BUILDINGS, ENIWETOK ISLAND

The following administrative buildings located on Eniwetok Island, are allocated to Task Groups or activities as indicated for the build-up and operational phases of Operation "CASTLE": (See Appendix III to Annex D for chart location.)

<u>BUILDING NO.</u>	<u>TYPE</u>	<u>USE</u>	<u>TG or ACTIVITY</u>
1.	Wood Frame	Service Club	7.3
1A.	Wood Frame	Latrine	7.3
2.	Wood Frame	Officers Beach Club	7.2
3.	Pacific	Emergency Generator Power House	7.2
4.	Pacific	Transmitter	7.2
4A.	Wood Metal Frame	Antenna Tower	7.4
5.	Pacific	Latrine	7.3
6-8.	Pacific	Latrine	7.2
9.	Wood Canvas	Open Air Show	7.2
10-13.	Pacific	Officers Quarters	7.2
14.	Pacific	Dispatch Station	7.2
15.	Pacific	Headquarters TG 7.2	7.2
16.	Pacific	Post Office & PX	7.2
17.	Pacific	Latrine	7.2
18-21.	Pacific	Officers Quarters	7.2
22.	Pacific	Hospital Ward	7.2
23.	Pacific	Hospital Ward	7.2
24.	Pacific	Dispensary-	7.2
26.	Wood Frame	ATCOM Quarters	7.2
27.	Wood Frame	Officers Club	7.2
29.	Pacific	Fire Station	7.2
30.	Wood Metal Frame	Starlight Theater	7.2
31.	Pacific	Laundry	7.2
32.	Quonset	Chapel	7.2
33.	Pacific	Reefer	7.2
34.	Pacific	Boilerhouse	AEC Contractor
35.	Pacific	Bakery	7.2
36.	Pacific	Mess Hall	7.2
37.	Pacific	Commissary	7.2
38-42.	Pacific	Officers Quarters	7.4
43-44.	Pacific	Latrines	7.4
46-47.	Pacific	Officers Quarters	7.1
48-50.	Pacific	Officers Quarters	7.4
51-55.	Pacific	Latrines	7.4
56.	Pacific	Powerhouse	AEC Contractor
56A.	Wood Frame	Pumping Station	ACE Contractor
56B.	Pacific	Deep Well House	AEC Contractor
56C.	Wood Metal	Pumping Station	AEC Contractor
57.	Pacific	Laboratory	7.2 7.1
58.	King Quonset	Warehouse	7.1
	Hut 4000 Sq Ft		7.2
59.	King Quonset	Warehouse	7.2
	Hut 4000 Sq Ft		7.2

D-II-1

BEST AVAILABLE COPY

~~SECRET SECURITY INFORMATION~~

Appendix II to Annex D, CTG 7.2 Operation Order No. 1-53 dated 13 October

<u>BUILDING NO.</u>	<u>TYPE</u>	<u>USE</u>	<u>TG or ACTIVITY</u>
60.	King Quonset Hut 4000 Sq Ft	Warehouse	
61.	King Quonset Hut 4000 Sq Ft	Warehouse	7.2 (Half Bldg to 7.3)
62.	King Quonset Hut 4000 Sq Ft	Warehouse	7.2
63.	King Quonset Hut 4000 Sq Ft	Warehouse	7.2
64.	King Quonset Hut 4000 Sq Ft	Ord Field Maint.	7.2
65.	King Quonset Hut 4000 Sq Ft	Warehouse	7.2
66.	King Quonset Hut 4000 Sq Ft	Warehouse	7.2
67.	King Quonset Hut 4000 Sq Ft	Warehouse	7.2
68.	Wood Shed	QM Shed Roofers	7.2
69.	King Quonset Hut 4000 Sq Ft	Warehouse	7.2
71.	King Quonset Hut 4000 Sq Ft	Warehouse	7.2
72.	Quonset	Dopot Officer	7.2
73.	King Quonset Hut 4000 Sq Ft	Warehouse	7.2
75.	King Quonset Hut 4000 Sq Ft	Warehouse	7.2
76.	King Quonset Hut 4000 Sq Ft	Warehouse	AEC Contractor
77.	Pacific	AF Supply Office	7.2
78.	Wood Frame	Storage	7.4
79.	King Quonset Hut 4000 Sq Ft	Warehouse	7.4
80.	King Quonset Hut 4000 Sq Ft	Warehouse	7.4
82.	Butler	Machine Shop	7.4
83.	Butler	Warehouse	7.2
84.	Pacific	Powerhouse	7.2
85.	Pacific	Receiver Bldg	7.2
87.	Wood Frame	Generator	7.4
88.	Wood Frame	Weather Station	7.4
89.	Pacific	MATS Terminal	7.4
90.	Pacific	Headquarters, TG 7.4	7.4
90C.	Wood Frame	Radar Unit	7.4
90G.	Wood Frame	Powerhouse	7.4
91.	Pacific	Quarters Crash Crew	7.4
91A.	Wood Frame	Crash Fire Station	7.4
92.	Pacific	Base Operations	7.4
93.	Metal Frame	MATS Storage	7.4
94.	Pacific	POL Pump House	7.2
95.	Tanks	POL Storage	7.2
95A.	Tanks	POL Storage	7.2
96.	Tanks	POL Storage	7.2
96A.	Tanks	POL Storage	7.2
98.	King Quonset Hut 4000 Sq Ft	Warehouse	7.4
99.	Quonset	Warehouse	7.4
100.	Quonset	Warehouse	7.4
101.	Quonset	Warehouse	7.4
102.	Quonset	Warehouse	7.4
103.	Quonset	Warehouse	7.4
104.	King Quonset Hut 4000 Sq Ft	Warehouse	7.4

BEST AVAILABLE COPY

~~SECRET~~

Appendix II to Annex D, CTG 7.2 Operation Order No. 1-53 (Cont'd)

<u>BUILDING NO</u>	<u>TYPE</u>	<u>USE</u>	<u>TG OR ACTIVITY</u>
105	Quonset	Warehouse	7.4
106	King Quonset Hut 4000 Sq Ft	Warehouse	7.4
107	Water Tank	Storage	AEC Contractor
108	Wood Metal Frame	Terrace Theatre	7.2
109-112	Pacific	Latrines	7.2
113	Pacific	Latrine	7.4
115	Pacific	Latrine	7.2
116	Pacific	Loran Station	7.2
116A	Wood Metal Frame	Loran Station	7.2
116B	Quonset	Storage	7.2
117A	Pacific	Decontamination	7.1
117B	Pacific	Decontamination	7.1
117C	Tent Frame	Decontamination	7.1
117D	Tent Frame	Decontamination	7.1
117E	Tent Frame	Decontamination	7.1
117F	Wood Metal Frame	Decontamination	7.1
117G	Quonset	Decontamination	7.1
118	Steel Truss Hangar	Hangar	7.4
121	Wood	Water Storage	AEC Contractor
122-123	Pacific	Latrines	7.4
124	Pacific	Pump Station	AEC Contractor
125	Pacific	Latrine	7.4
125A	Tent Frame	Decontamination	7.4
126	Pacific	Latrine	7.2
127	Pacific	Latrine	7.4
128	Pacific	Latrine	7.2
129	Pacific	Latrine	7.2
130	Pacific	Latrine	7.4
131	Wood Frame	Booster Pump House	AEC Contractor
134	Quonset	Warehouse	7.2
135	King Quonset Hut 4000 Sq Ft	Office and Storage	7.4
136	Quonset	Provost Marshal	7.2
137	Quonset	Ammo Magazine	7.2
138	Wood Metal Shed	Storage	7.4
139	Wood Frame	Nose Hangar	7.4
143	Wood Metal Frame	Generator	7.4
144	Wood Metal Frame	Ice Plant	AEC Contractor
145	Quonset	Storage	7.4
147	Quonset	Storage	7.4
148	Wood Frame	Inflation Shed	7.4
149	Wood Frame	Hydrogen Generator Shed	7.4
150	Quonset	Supply	7.4
151	Quonset	Underground Storage	7.4
153	Quonset	Boat Pool	7.2
154	Metal Frame	Tower	7.4
155	Quonset	Boat Pool	7.2
156	Underground Wood Frame	Boat Pool	7.3
157	Quonset	Battery Shop	7.4
158	Wood	Vehicle Wash Rack	7.2
159	Quonset	Warehouse	7.4
160	Quonset	Warehouse	7.4

D-II-2

Revised 14 Nov 53

BEST AVAILABLE COPY

~~SECRET SECURITY INFORMATION~~

~~SECRET~~

Appendix II to Annex D, CTG 7.2 Operation Order No. 1-53 (Cont'd)

<u>BUILDING</u>	<u>TYPE</u>	<u>USE</u>	<u>TG OR ACTIVITY</u>
161	Quonset	Warehouse	7.4
162	Quonset	Warehouse	7.4
163	Underground Quonset	Warehouse	7.4
165	Underground Quonset	Warehouse	7.4
167	Quonset	Office	AEC Contractor
169	Quonset	Office	AEC Contractor
170	Wood Metal Frame	Office Supplies	7.4
172	Wood Frame	Pier Office	7.2
173	Wood Frame	Boat Pool	7.3
174	Wood	Radar Tower	7.4
175	Wood Frame	Tool Room	AEC Contractor
176-184	Squad Tents	Officers Quarters	7.4
185	Pacific	Latrine	7.4
186	Pacific	Deep Well House	AEC Contractor
191	Wood Metal Frame	Tool Shed	AEC Contractor
192	Quonset Underground	Storage	7.2
193	Shed	Storage	7.4
201-222	Squad Tents	EM Billets	7.3
223-316	Squad Tents	EM Billets	7.2
317-321	Squad Tents	EM Billets	7.2
322-437	Squad Tents	EM Billets	7.4
438-443	Squad Tents	Civ Billets	AEC Contractor
444-461	Squad Tents	EM Billets	7.4
462-478	Squad Tents	EM Billets	7.2
500	Wood Frame	Quarters	7.4
502	Wood Frame	Office	7.2
503	Wood Metal Frame	Mtr Pool Garage	7.2
503A	Wood Metal Frame	Battery Shop	7.2
503B	Wood	Vehicle Grease Rack	7.2
504	Wood Frame	EM Club	7.2
505	Wood Frame	EM Club	7.2
506	Wood Frame	NGO Club	7.2
507A	Wood Frame	Hobby Shop	7.2
509	Wood Frame	Furniture Repair Shop	7.2
511	Wood Metal Frame	Power Station Office	AEC Contractor
512	Wood Metal Frame	Generator Shed	7.2
513	Metal Wood Frame	Storage	7.2
515	Wood Metal Frame	Mortuary & Maint Shop	7.2
516	Tent Frame	Decontamination	7.4
516A	Tent Frame	Decontamination	7.4
517	Wood Frame	POL Office	7.2
519	Wood Frame	Paint Shop	7.2
522	Wood Frame	Skeet Range	7.2
600	Butler	Warehouse	7.4
601	Butler	Warehouse	7.4
602	Butler	Warehouse	7.2
603	Pacific	Rec Hall	7.2

D-II-4

Revised 14 Nov 53

BEST AVAILABLE COPY

~~SECRET SECURITY INFORMATION~~

Appendix II to Annex D, CTG 7.2 Operation Order No. 1-53 (Cont'd)

The following listed buildings 604-639 are prefabricated structures and are not shown on building allocation chart, Appendix III to Annex D, inasmuch as they have not been assembled and placed:

<u>BUILDING NO.</u>	<u>TYPE</u>	<u>USE</u>	<u>TG OR ACTIVITY</u>
604	Prefab	Electronics Maintenance	7.4
605	Prefab	Electronics Maintenance	7.4
606	Prefab	SAC Operations	7.4
607	Prefab	Air Weather Serv	7.4
608	Prefab	Air Weather Serv	7.4
609	Prefab	Air Weather Serv	7.4
610	Prefab	Photo Lab	7.4
611	Prefab	SAC Operations	7.4
612	Prefab	Supply	7.4
613	Prefab	Supply	7.4
614	Prefab	Supply Warehouse	7.2
		Depot Supply	
615	Prefab	Supply Warehouse	7.2
		Depot Supply	
616	Prefab	Supply Whse. Less	7.2
617	Prefab	Supply Warehouse	7.2
		Depot Supply	
618	Prefab	Supply Warehouse, AG	7.2
619	Prefab	Special Services	7.2
		Supply & Maintenance	
620	Prefab	Ord Supply & Shop Office	7.2
630	Prefab	Parachute repack facilities	7.4
631	Prefab	Carpenter Shop	7.4
632	Prefab	Air Rescue Operations	7.4
633	Prefab	SAC Operations	7.4
634	Prefab	7.3 Air Operations	7.4
635	Prefab	7.3 Air Operations	7.4
636	Prefab	7.3 Air Operations	7.4
637	Prefab	AF Sqdn Orderly Room	7.4
638	Combination of 12 Bldgs 20'x48' Prefab	Supply Warehouse	
639	Prefab	Parachute Drying Tower	7.4
640	Prefab	Special Aircraft Unit	7.4

The following listed buildings are not assembled and are stored in Depot Supply for future use as directed by Commander, Joint Task Force SEVEN.

Prefab	CJTF SEVEN
Prefab	CJTF SEVEN

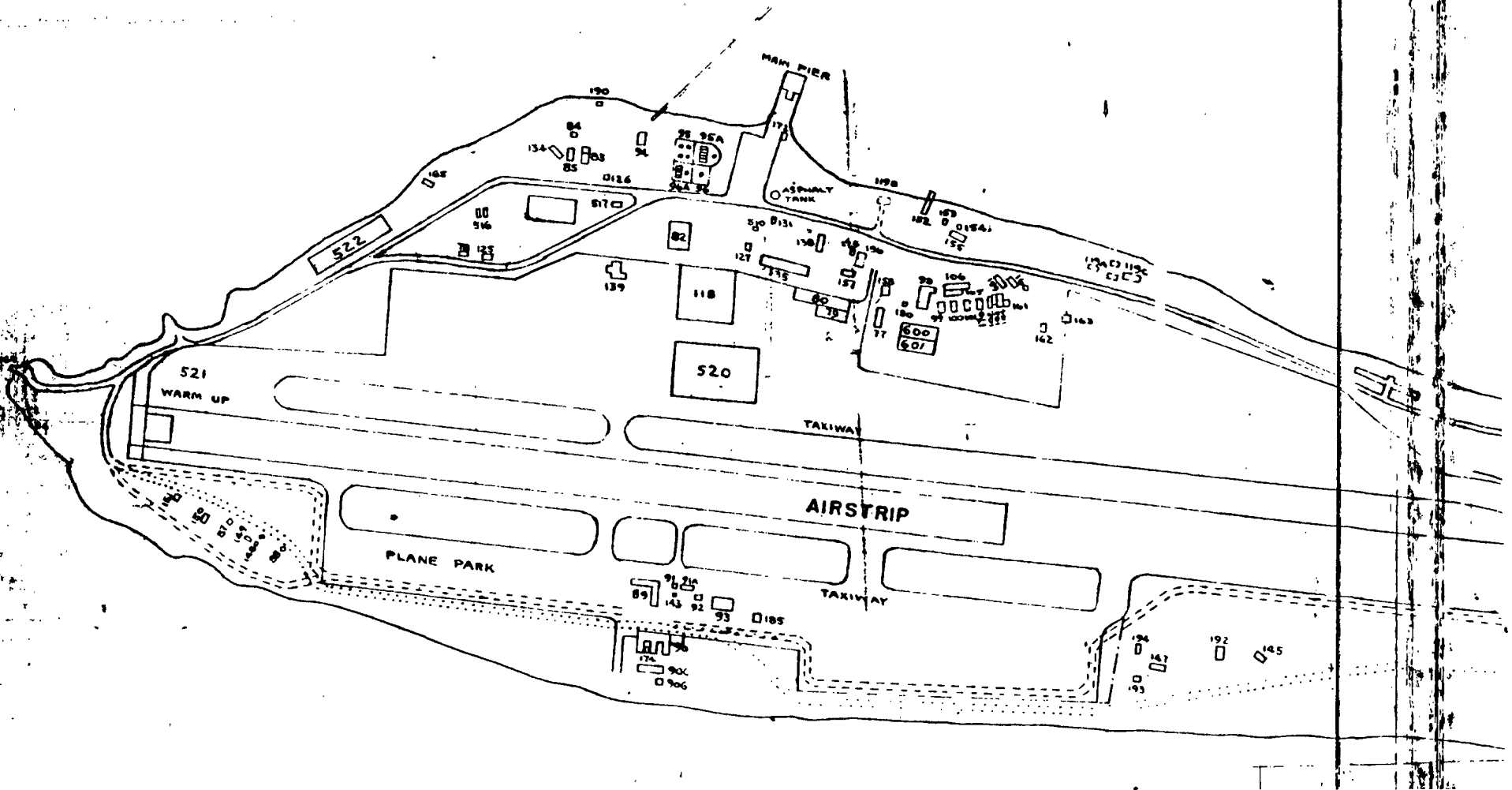
OFFICIAL:

EDWARD H. LAHTI
Colonel, Infantry
Commander

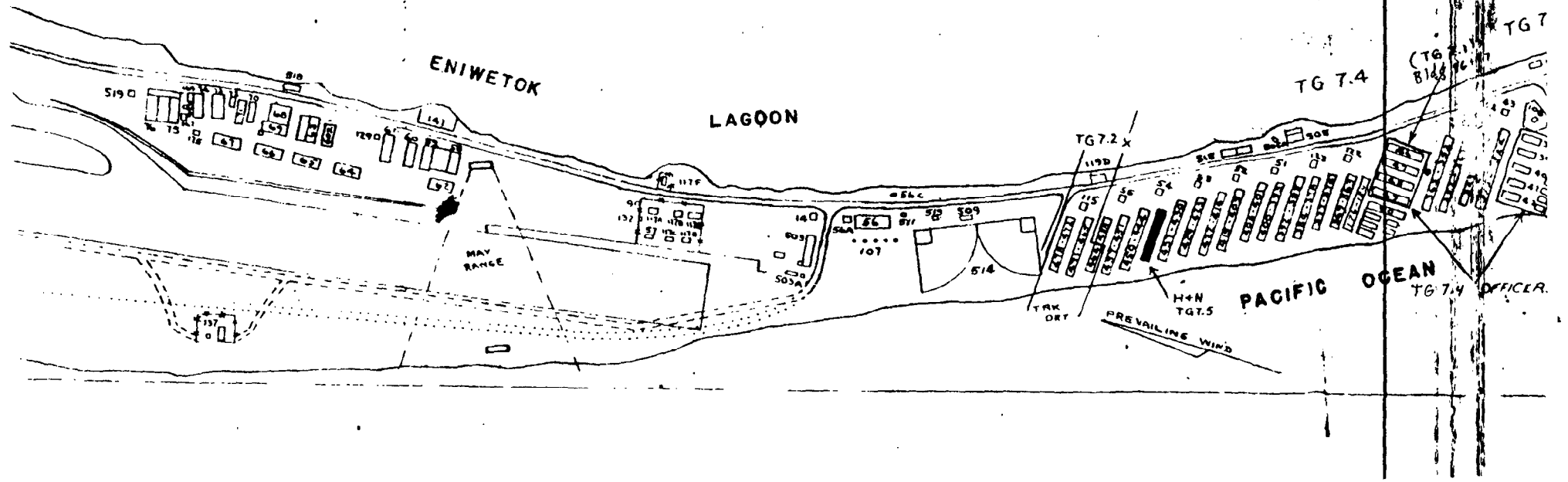
C. W. MARTIN
Major AGC
Sl

BEST AVAILABLE COPY

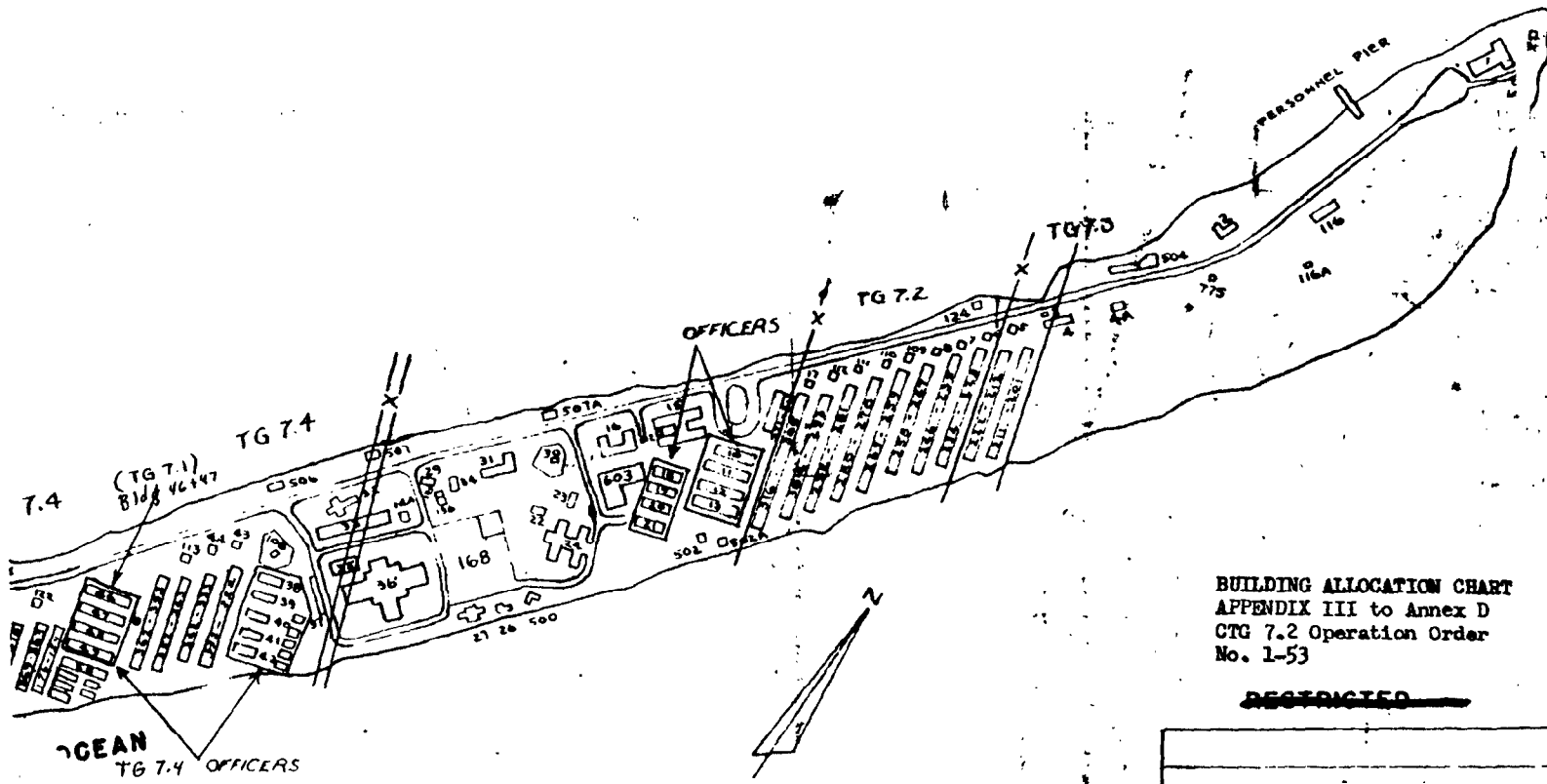
BEST AVAILABLE COPY



BEST AVAILABLE COPY



BEST AVAILABLE COPY



APPROX SCALE: 1" = 400'

BUILDING ALLOCATION CHART
APPENDIX III to Annex D
CTG 7.2 Operation Order
No. 1-53

~~RESTRICTED~~

ENIWETOK ISLAND		
3 MAR 1953		
Drawn by E. D. THOMAS	Approved by [Signature]	Date 6 MAR 1953

~~SECRET~~

Headquarters Task Group 7.2
Joint Task Force SEVEN
APO 187 c/o Postmaster
San Francisco, California
13 October 1953

Annex E to CTG 7.2 Operation Order No. 1-53

LOGISTICAL

1. General

Logistical support of the Task Group during the build up phase of CASTLE will continue to be provided through supply and service agencies of the Department of Defense in accordance with existing regulations, directives and agreements. During this period additional support will be derived from other elements of the Task Force as a result of logistical missions assigned commanders of other Task Groups.

2. Logistical Missions

Logistical missions assigned to Task Group 7.2 during the build up phase include the following:

a. Furnish housekeeping supply support to all units housed and operating at Eniwetok Island. This support will include billeting, messing, commissary, salvage, POL Products, laundry, billeting supplies, general purpose vehicles, bus transportation, sales store, clothing and equipment repair, EM and Officers' clubs, PX and athletic and recreational facilities. Issue of class X clothing to all military personnel stationed on Eniwetok Atoll in the following quantities, until existing stocks are exhausted:

<u>Item</u>	<u>Individuals</u> <u>Permanently Assigned</u>	<u>Individuals</u> <u>Temporary Assigned</u>
Shorts, Cotton Khaki	4 Pr.	2 Pr.
Shirts, Cotton Khaki Short Sleeve	4 Ea.	2 Ea.
Shoes Service	1 Pr.	1 Pr. if TDY Period is to be in excess of 30 days

b. Supply Army procured Class II and IV material (non expendable property).

c. Supply Army procured expendable supplies to all elements of the Task Force on ENIWETOK ATOLL, on a reimbursable basis.

d. Provide for maintenance of all Army general and special purpose military equipment and and Air Force special purpose equipment on ENIWETOK ATOLL consistent with facilities under control of CTG 7.2. Using units and activities are responsible for preventive maintenance of property in their custody and for repair of such property to the extent of their capabilities.

3. Supply

a. Unit commanders and chiefs of using activities of this command are responsible for determination and timely submission of requirements for materiel and services for their respective units and

E-1
BEST AVAILABLE COPY

~~SECRET SECURITY INFORMATION~~

Annex E to CTG 7.2 Operation Order No. 1-53 (Cont'd)

activities. They will initiate periodic checks to insure that essential requirements are being met. Shortages or deficiencies which will retard operations will be reported promptly to the Task Group Commander.

b. Essential materiel and services which cannot be obtained from military or AEC sources may be procured commercially in the Territory of HAWAII or the CONUS within the limitations of available funds.

(1) Wherever possible, the procurement will be accomplished through existing procurement agencies of the Department of Defense and/or the AEC.

(2) Procurement with Task Group funds will be in accordance with current Armed Force Procurement Regulations.

(3) Procurement problems which cannot be resolved by the Task Group will be referred to the Task Force Commander.

c. Procedures for the requisition and distribution of supplies and equipment, and for messing of personnel are set forth in SOP's published by CTG 7.2.

4. Property Control

a. The Accountable Officer is the individual designated to account for all supplies and equipment designated for Task Group 7.2. He will receive, store, issue, and safeguard all supplies and equipment.

b. The Commissary Officer is the individual designated to requisition receive, store, safeguard, issue and account for rations and commissary stocks pertaining to the Task Group.

c. Property in custody of the Task Group will be marked in accordance with existing instructions of the owning agency.

d. Except as otherwise indicated below, property in custody of the Task Group will be accounted for in accordance with established procedures of the using activity.

e. Property which is lost, damaged, or destroyed while in custody of the Task Group will be accounted for in accordance with established procedures of the owning agency.

f. Where the loan of property to the Task Group is conditioned upon specific terms, CTG 7.2 is responsible for strict adherence to such terms.

g. The lending of property between the military and AEC elements of the Task Force is authorized and encouraged where such action will result in economy of funds. All such loans will be transacted by and through the Accountable Officer of the Task Group.

h. Salvage and scrap will be disposed of in accordance with existing instructions of the owning agency. The Salvage Officer may direct the destruction of scrap and salvage when he has ascertained that no further use exists for specific items. He will maintain a suitable salvage yard for materials which have a probable future use and will establish prescribed records to account for such materials.

~~SECRET~~

Annex E to CTG 7.2 Operation Order No. 1-53 (Cont'd)

1. Excess military property will be reported to CJTF SEVEN by the Accountable Officer for disposition and shipping instructions. The shipment of such property from the forward area will not be accomplished without the prior approval of CJTF SEVEN.

5. Hospitalization and Evacuation

a. Medical Services

(1) The Task Group will provide hospital facilities on ENIWETOK ISLAND for all shore elements of the Task Force in that area. Hospitalization of personnel in other areas will be coordinated with commanders of other Task Groups.

(2) Infirmaries and aid stations required to support operations of the Task Group may be established as deemed necessary by the Task Group Surgeon.

b. Evacuation

(1) Sick and injured.

a. Personnel who, in the opinion of the Surgeon or senior medical officer of the Task Group present for duty, cannot be returned to duty within 15 days, may be evacuated from the forward area.

b. Air evacuation facilities will be provided by Commander, Pacific Division, Military Air Transportation Service (PACDIVMATs), and will be arranged by coordination with the Military Air Evacuation Service (MAES) Honolulu T.H.

c. Military and civil service personnel will be evacuated to Tripler Army Hospital. All other personnel will be evacuated to civilian hospitals on OAHU, T. H.

d. The return of evacuees to their duty stations will be arranged by the JTF SEVEN Liaison Officer at Hickam AFB in coordination with PACDIVMATs and the hospitals concerned.

(2) Deceased

a. Remains of military and civil service personnel will be evacuated by the Task Group Mortuary Officer to the US Army Mortuary, Tripler Army Hospital. Remains of other civilian personnel will be evacuated to previously designated civilian mortuaries on OAHU, T. H.

b. A complete serviceable, uniform except headgear and footwear will accompany military remains.

c. The following information will be furnished by radio to CG USARPAC with information copy to PACDIVMATs:

1. Military Personnel

(a) Name, rank or rate, serial number, organization and service.

(b) Campaign ribbons, decorations and awards to which deceased is entitled. (If service record is incomplete, so state.)

E-3

BEST AVAILABLE COPY

~~SECRET SECURITY INFORMATION~~

~~SECRET~~

Annex E to CTG 7.2 Operation Order No. 1-53 (Cont'd)

(c) Date concerning the flight on which remains will be shipped including ETA OAHU.

2. Civilian Personnel

(a) Name of deceased and organization by which employed.

(b) Name and address of next of kin.

(c) Date concerning the flight on which remains will be shipped including ETA OAHU.

e. Territory of HAWAII standard death certificates will be accomplished and forwarded with remains in each case.

6. Transportation

a. Mission: The mission of the Transportation Officer and the assigned Transportation Corps units is to furnish the Commanding Officer, TG 7.2 a comprehensive staff and operational transportation service; serve as supervisor of all port and highway activities; control and coordinate MATS air passenger, cargo and mail traffic; control and coordinate an inter-atoll air lift system; operates a port of embarkation/debarkation.

b. Water Transportation

(1) Organization: The Port Detachment, 7126th AU, operates all port facilities and is responsible to the Transportation Officer for the discharge and loading of all ships in the Eniwetok Lagoon area.

c. Facilities (Eniwetok Island)

(1) Gear and Maintenance Loft - capable of giving sustained support to the Port Detachment's operation.

(2) Material Handling Equipment is presently available in quantity to support adequately the port operation operating at maximum tonnage capacity.

(3) Cargo Pier is approximately sixty (60) feet wide and extends approximately one hundred thirty-five (135) feet into the water.

(4) Storage facilities for Cargo Pier are non-existent except for a small open storage and segregation area at the head of the Cargo Pier, capable of temporarily storing approximately 6000 square feet of cargo.

(5) Personnel pier is located at north end of Lagoon side of island and is capable of berthing two (2) LCMs simultaneously for the purpose of discharging or loading personnel. The beach area immediately south of Personnel Pier is capable of beaching two (2) LCUs simultaneously for the discharge of cargo and personnel.

(6) Heavy lift equipment presently on hand consists of one (1) twenty (20) ton capacity, crawler type crane, and two (2) fifteen (15) ton capacity, crawler type cranes.

E-4

BEST AVAILABLE COPY

~~SECRET SECURITY INFORMATION~~

Annex E to CTG 7.2 Operation Order No. 1-53 (Cont'd)

(7) Navy Boat Pool, manned by one Officer and twenty-five (25) EM equipped with two (2) LCMs and one (1) AVR, and one (1) LCPL which may be augmented to fulfill its mission.

(8) Amphibious Section consists of 12 DUKWs for use in inter-island and ship to shore cargo/passenger traffic as required.

d. Facilities (Parry Island)

(1) Gear and Maintenance Loft is capable of giving adequate sustained support to port operations operating at maximum capacity.

(2) Material Handling Equipment is presently available to adequately support the stevedoring operation.

(3) Cargo Pier is capable of handling two (2) LCUs, and three (3) LCMs, one (1) LCU and two (2) 500 ton barges, and cargo at the approximate rate of seventy-five (75) weight tons per hour.

(4) LST Beach is located adjacent to and NE of the Cargo Pier and is capable of beaching one (1) LST and four (4) LCUs.

(5) Personnel Pier is located on the NE end of Eniwetok Island and is capable of berthing three (3) LCMs for discharging or embarking passengers. The beach area SW of Personnel Pier is capable of beaching (3) LCUs simultaneously for the purpose of discharging or embarking and debarking passengers.

(6) Floating Equipment presently available and operating is as follows: Eight (8) LCMs, three (3) LCUs, one Yard Tug, Steel, 375 HP, one (1) Yard Tug, wooden, 300 HP, three (3) Water Taxis, three (3) 500 ton capacity steel type barges, and one (1) Floating Drydock.

e. Highway Transportation

(1) Organization: The Transportation Truck Detachment, 7126 AU, is responsible to the Commander, TG 7.2 to furnish motor transportation and organizational maintenance service for all Army Accountable Vehicles of all elements of JTF SEVEN based on Eniwetok Island.

(2) Facilities: The island motor pool is divided into two (2) sections:

a. Operations section.

b. Organizational Maintenance Section.

~~SECRET~~

Annex E to CTG 7.2 Operation Order No. 1-53 (Cont'd)

f. Air Transportation:

(1) Responsibilities: The Transportation Officer is the Chairman of the Air Traffic Control Committee which is formed for the purpose of determining outbound movement requirements for all elements of JTF SEVEN, and for inbound movements of cargo, passengers, and mail for TG 7.2 only, for traffic on MATS aircraft. Controls the priority of movement on outbound MATS, and operating C-47 inter-atoll flights.

(2) Facilities:

(a) MATS: Facilities for the movement of inbound and outbound passenger and cargo requirements are furnished by MATS, and are capable of supporting air traffic, both cargo and passenger, as determined by the Air Traffic Control Committee. These facilities include a freight terminal providing open and temporary covered storage and a passenger waiting room, with normal facilities, capable of accommodating up to fifty (50) personnel.

(b) Inter-Atoll Flights (C-47): The Transportation Officer has been granted temporary warehouse space in the Air Force area, to receipt for, and manifest cargo.

OFFICIAL:

EDWARD H. LAHTI
Colonel, Infantry
Commander

WILLIAM TROY
Lt Col QMC
S4

E-6

BEST AVAILABLE COPY

~~SECRET SECURITY INFORMATION~~

~~SECRET~~

Headquarters Task Group 7.2
Joint Task Force SEVEN
APO 187 o/o Postmaster
San Francisco, California
13 October 1953

Annex F to CTG 7.2 Operation Order No. 1-53

FISCAL

Fiscal instructions applicable are contained in CJTF 132, Operation Order No 4-52, CJTF - SEVEN Operations Order No 1-53, Joint Task Force SEVEN and Task Group 7.2 SOPs

OFFICIAL:

EDWARD H. LAHTI
Colonel, Infantry
Commander

JAMES J. GALLAGHER
Capt, FC
Comptroller

F-1

BEST AVAILABLE COPY

~~SECRET SECURITY INFORMATION~~

~~SECRET~~

Headquarters Task Group 7.2
Joint Task Force SEVEN
APO 187 c/o Postmaster
San Francisco, California
13 October 1953

Annex G to CTG 7.2 Operation Order No. 1-53

COMMUNICATIONS

1. General Concept of Communications Operations

a. One permanent relay-crypto center at ENIWETOK will be installed, operated and maintained by TG 7.2. Tributary stations serviced by this relay center will include: Hq, JTF SEVEN, TG 7.2, TG 7.3, USS ESTES and other ships as required (i.e., CURTISS, QVE, LSD) and TG 7.4. Headquarters, JTF SEVEN communications center will provide for TG 7.1, TG 7.5, and TG 7.3 (ashore).

b. Crypto center, ENIWETOK, will be crypto guard for all above mentioned tributary stations except TG 7.3 (afloat). For handling of teletype traffic, up to and including SECRET, between major forward and rear echelon task force elements the following radio teletype circuits will be operated "ON-LINE", using SIGOT with SAMSON (synchronous mixer):

<u>CIRCUIT</u>	<u>TYPE</u>
ENIWETOK - OAHU (UHP)	Full Dux (1)
ENIWETOK - BIKINI	Full Dux (1)
ENIWETOK - KWAJALEIN	Full Dux (1)
ENIWETOK - LOS ALAMOS	Full Dux (1)
ENIWETOK - AGC (USS ESTES)	Full Dux (1)

Traffic not capable of being handled by means of on-line facilities will be enciphered off-line prior to transmission. All TOP SECRET and RESTRICTED DATA traffic will be enciphered off-line. This is necessary to meet AEC requirements and, in addition, terminal communications personnel are not in all instances TOP SECRET or "Q" cleared.

c. Telecon facilities will be available at Headquarters, JTF SEVEN (PARRY ISLAND). Requests for this service will be submitted in accordance with COI item 29-1.

d. Wire telephone facilities cleared for conversations up to and including SECRET will be available at:

- (1) ENIWETOK ISLAND (400 dial exchange) with connecting service to other islands.
- (2) BIKINI ATOLL (connecting service between necessary islands).
- (3) PARRY ISLAND (220 line manual with connecting service to other islands).
- (4) Ship-shore buoy cable at ENIWETOK, PARRY AND BIKINI.
- (5) AN/TRC radio, limited to unclassified traffic, will be used as a backup for the foregoing facilities.

e. Voice radio facilities will be available on a closely controlled basis between the following points:

G-1

BEST AVAILABLE COPY

~~SECRET SECURITY INFORMATION~~

~~SECRET~~

Annex G to CTG 7.2 Operation Order No. 1-53 (Cont'd)

- (1) ENIETOK-BIKINI (HF)
- (2) ENIETOK-KAJALEIN (TG 7.4 controlled) (HF)
- (3) ENYU (Firing Party) - USS ESTES (VHF)
- (4) Between Ships (UHF, VHF, AN/TRC and HF)
- (5) Ship-Shore (VHF, AN/TRC and HF)

Long-haul and inter-atoll voice radio and radioteletype facilities will be limited to those authorized by CJTF SEVEN.

2. Mission, Headquarters, TG 7.2

a. Install, operate, and maintain communications facilities as directed by CJTF SEVEN.

b. Establish a transmission security training program for all intended users of voice radio facilities and a message drafter improvement program to insure most efficient use of limited operational communications facilities.

3. Communications Missions of Subordinate Units

a. Signal Detachment (TG 7.2)

(1) Install, operate and maintain relay center, ENIETOK, for Joint Task Force. Insure a complete operator knowledge of on-line SIGOT operations.

(2) Operate and maintain communications centers for Headquarters, JTF SEVEN (PARRY ISLAND), Headquarters, TG 7.2 (ENIETOK ISLAND) and in support of AEC operations at BIKINI (ENINMAN).

(3) Provide crypto guard facilities for Headquarters, JTF SEVEN, TG 7.1, 7.2, 7.4, 7.5 and for Headquarters, TG 7.3 when ashore.

(4) Install, operate and maintain all land-based communications facilities required at ENIETOK ATOLL except:

- (a) Task Group 7.4 internal communications
- (b) Telephone plant on islands other than ENIETOK
- (c) Inter-island and buoy cable systems
- (d) Special facilities required by TG 7.1 and TG 7.5

(5) Install, operate and maintain backup facilities for:

- (a) The ENIETOK-PARRY submarine cable circuits.
- (b) The ENINMAN-ENYU submarine cable keying circuits.
- (c) Buoy cable circuits at ENIETOK and BIKINI

... facilities at relay center, ENIETOK, and communications center, BIKINI, using standard teletype equipment.

G-2

BEST AVAILABLE COPY

~~SECRET SECURITY INFORMATION~~

~~SECRET~~

Annex G to CTG 7.2 Operation Order No. 1-53 (Cont'd)

(6) Install, operate and maintain BIKINI terminal facilities, to include AN/TRC equipment for use on ENYU-ESTES ciphony link and HF transmitting and receiving equipment (ENYU) for use on ENIETOK-BIKINI RAATT duplex circuit.

(7) Install, operate and maintain theater facilities at ENIETOK ISLAND; install and maintain motion picture projection facilities at PARRY ISLAND and BIKINI ATOLL.

(8) Operate a crystal grinding facility for emergency production of crystals for all elements of the Task Force.

(9) Furnish emergency power for communications facilities provided by TG 7.2, to include the joint transmitter building.

(10) Operate a battery charging plant for the maintenance of storage batteries.

(11) Provide maintenance for Special Service radio broadcast station TXLE and Special Service radio receivers.

(12) Provide personnel and equipment to operate and maintain Headquarters, JTF SEVEN teleconferencing facilities on PARRY ISLAND.

(13) Provide such other electronic facilities, the operation and maintenance of which are normally considered a responsibility of the Signal Corps, which are within the capabilities of personnel and equipment available.

(14) Install, operate and maintain facilities control of circuits terminating in Relay Center, ENIETOK.

(15) Provide a send and receive TT circuit from Headquarters, JTF SEVEN Communications Center (PARRY ISLAND) to central receiving point in Building 208-209, PARRY ISLAND, for delivery of teletype traffic for TG 7.1 and TG 7.5.

(16) Where, in the foregoing paragraphs, installations is a responsibility assigned to CTG 7.2, it will be accomplished in conformity with specifications issued by CJTF SEVEN.

(17) Operate communications facilities in accordance with Annex D to CTG 7.2 Hostile Action Alert Plan No. 1-53.

b. Military Police Detachment

Operate the Military Police Communications system in accordance with established procedures in applicable JANAP () and ACP ().

c. Port Detachment

(1) Operate the off-loading communications system in accordance with established procedures in applicable JANAP () and ACP ().

(2) Operate the Combat Security Force Communications net in accordance with Annex D to CTG 7.2 Hostile Action Alert Plan No. 1-53.

G-3

BEST AVAILABLE COPY

~~SECRET SECURITY INFORMATION~~

~~SECRET~~

Annex G to CTG 7.2 Operation Order No. 1-53 (Cont'd)

d. POL Section

Operate the communications facilities for off-loading of ships containing POL materials in accordance with applicable JANAP () and ACP ().

OFFICIAL:

EDWARD H. LAHTI
Colonel, Infantry
Commander

MYRON H. DAXIN
Major SigC
S5

G-4

BEST AVAILABLE COPY

~~SECRET SECURITY INFORMATION~~

~~SECRET~~

Headquarters Task Group 7.2
Joint Task Force SEVEN
APO 187 o/o Postmaster
San Francisco, California
13 October 1953

Annex H to CTG 7.2 Operation Order No 1-53

RADIOLOGICAL SAFETY

1. GENERAL: The detonation of any nuclear device in the vicinity of ENI.ETOK ATOLL could result in the radiological contamination of ENI.ETOK ISLAND. Radiological safety for all Task Group personnel is a command responsibility and radiological safety activities will be performed through command channels. (See Radiological Safety regulation; Appendix I to Annex I CJTF SEVEN Operations Order 1-53.

2. MISSION: Task Group 7.2 has been assigned the following missions by CJTF SEVEN Operation Order 1-53:

- a. Establish a radiological safety organization within the Task Group capable of minimizing the effects of contamination of ENI.ETOK ISLAND due to "fall out" and perform all ground monitoring services associated with ENI.ETOK ISLAND except in those areas or activities assigned to other Task Groups.
- b. Provide fifty (50) "Q" cleared radiological safety monitors and ten (10) decontamination personnel for emergency support of TG 7.1.
- c. Conduct radiological safety orientation for all personnel of the Task Group.
- d. Provide RADLAC equipment for Task Group requirements including spare parts and repair and calibration facilities.
- e. Provide contaminated clothing laundry facilities for TG 7.2 and TG 7.4.

3. ORGANIZATION AND TRAINING: To accomplish the missions stated in paragraphs 2a and b above as expeditiously and as economically as possible, the radiological safety organization shown in appendix I is established. Personnel to man this organization as an additional duty will be selected and trained on the basis of the qualifications listed in paragraph 3a below.

a. Qualification for selection and training of unit and section radiological safety personnel are as follows:

- (1) Officers: Report date not earlier than 15 April 1954.
- (2) Enlisted Men:
 - (a) Rotation date not earlier than 1 May 1954.
 - (b) "Q" clearance as regular duty requirement.
 - (c) Aptitude area I score of 90 or above.

b. Responsible Officers for the units and sections listed in appendix I will appoint one (1) officer from the unit or section as Unit Radiological Safety Officer. The officer will complete the Practical Atomic Defense Course (Standard Course 425) at the Fleet Training Center, Pearl Harbor, TH.

H-1

BEST AVAILABLE COPY

~~SECRET SECURITY INFORMATION~~

~~SECRET~~

Annex H to CTG 7.2 Operation Order No 1-53 (Cont'd)

c. The following units will furnish personnel with the qualifications shown in par. 3a(2) above, in numbers indicated, for training as monitors and decontaminating personnel.

<u>UNIT</u>	<u>QUOTA</u>
Hq & Hq Detachment, 7126 AU	10
Service Detachment, 7126 AU	10
Signal Detachment, 7126 AU	10
Port Detachment, 7126 AU	20
MP Detachment, 7126 AU	20

The Task Group Radsafe Officer and S3 will coordinate this training directly with unit commanders concerned.

d. The requirement set forth in paragraph 2c above will be met under the provisions of Training Memorandum No 1 this Headquarters dated 1 June 53.

4. LOGISTICAL MATTERS:

a. The Task Group Signal Maintenance Officer will be responsible for maintenance of all Radiac Equipment.

b. The Task Group Laundry Officer will be responsible for the maintenance of three (3) mobile laundry units for use in clothing decontamination. Provisions will be made to drain these units directly into the lagoon.

OFFICIAL:

EDWARD H. LAHTI
Colonel, Infantry
Commander

11 July 53
ANGELO GRILLS
Capt, Inf
Radsafe Officer

Appendix:

1. Radiological Defense Organization

H-2

BEST AVAILABLE COPY

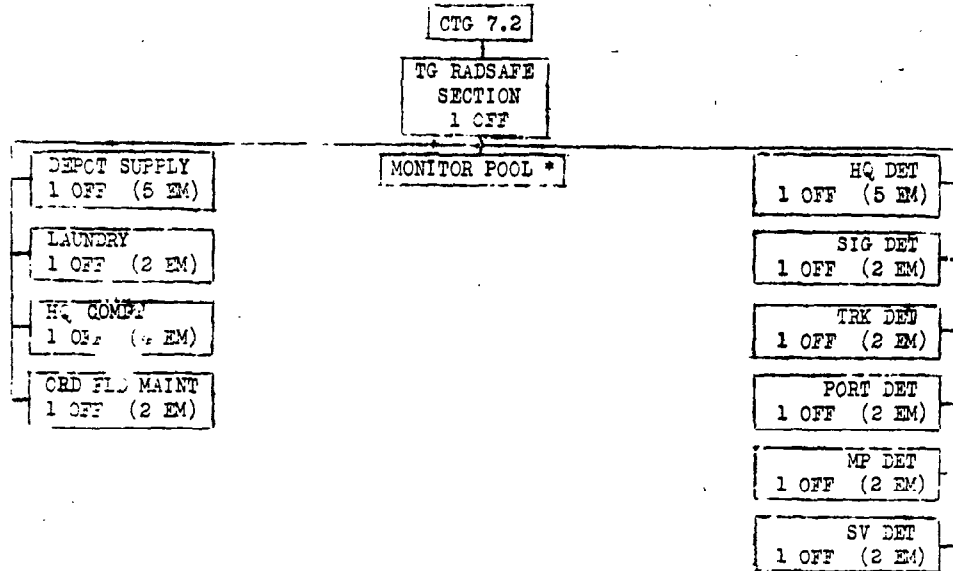
~~SECRET SECURITY INFORMATION~~

~~SECRET~~

Headquarters Task Group 7.2
Joint Task Force SEVEN
APO 187, c/o PM, San Francisco, Calif.
13 October 1953

Appendix "I" to Annex "H" Radiological Safety, CTG 7.2, Operation Order 1-53

TASK GROUP 7.2 RADS SAFE ORGANIZATION



NOTE: Solid line indicates technical supervision of Radsafe preparedness and training and operational control in the event of radiological contamination emergency.

* Upon completion of training, personnel from monitor pool will be given emergency assignments by name in numbers indicated in Radsafe Organization Structure. Remaining trained personnel will constitute emergency reserve to be committed at the direction of CTG 7.2.

OFFICIAL:

EDWARD H LAHTI
Colonel, Infantry
Commander

Angelo Grills
ANGELO GRILLS
Capt, Inf
Radsafe Officer

BEST AVAILABLE COPY

~~SECRET SECURITY INFORMATION~~

Headquarters Task Group 7.2
 Joint Task Force SEVEN
 APO 187 c/o PM, San Francisco, Calif.
 13 October 1953

Annex "I" to CTG 7.2 Operation Order 1-53

ESTIMATED PHASED POPULATION, ENIWETOK IS.

The following figures are based upon estimates submitted by this and other Task Groups of JTF SEVEN, and are listed below for planning purposes.

<u>7.1</u>	<u>Oct</u>	<u>Nov</u>	<u>Dec</u>	<u>Jan</u>	<u>Feb</u>	<u>Mar</u>	<u>Apr</u>	<u>May</u>
OFF				11	15	15	15	
EM				12	57	58	57	
Civ				24	24	27	24	
Total				<u>47</u>	<u>96</u>	<u>100</u>	<u>96</u>	

<u>7.2</u>	<u>Oct</u>	<u>Nov</u>	<u>Dec</u>	<u>Jan</u>	<u>Feb</u>	<u>Mar</u>	<u>Apr</u>	<u>May</u>
OFF	70	75	80	86	86	86	91	65
EM	1051	1036	1092	964	958	932	958	881
Total	<u>1121</u>	<u>1111</u>	<u>1172</u>	<u>1050</u>	<u>1044</u>	<u>1018</u>	<u>1049</u>	<u>946</u>

<u>7.3</u>	<u>Oct</u>	<u>Nov</u>	<u>Dec</u>	<u>Jan</u>	<u>Feb</u>	<u>Mar</u>	<u>Apr</u>	<u>May</u>
OFF		1	1	45	45	45	45	
EM		41	41	120	120	120	120	20
Total		<u>42</u>	<u>42</u>	<u>165</u>	<u>165</u>	<u>165</u>	<u>165</u>	<u>20</u>

<u>7.4</u>	<u>Oct</u>	<u>Nov</u>	<u>Dec</u>	<u>Jan</u>	<u>Feb</u>	<u>Mar</u>	<u>Apr</u>	<u>May</u>
OFF	42	47	58	306	319	319	319	306
EM	426	546	551	1260	1260	1260	1260	1460
Civ	1	1	1	4	4	4	4	4
Total	<u>469</u>	<u>594</u>	<u>610</u>	<u>1570</u>	<u>1583</u>	<u>1583</u>	<u>1583</u>	<u>1570</u>

<u>7.5</u>	<u>Oct</u>	<u>Nov</u>	<u>Dec</u>	<u>Jan</u>	<u>Feb</u>	<u>Mar</u>	<u>Apr</u>	<u>May</u>
OFF Code	14	12	6	4	3	3	3	3
EM Code	26	104	48	50	39	39	33	27
Total	<u>40</u>	<u>116</u>	<u>54</u>	<u>54</u>	<u>42</u>	<u>42</u>	<u>36</u>	<u>30</u>

I-1

BEST AVAILABLE COPY

~~SECRET SECURITY INFORMATION~~

UNCLASSIFIED