

MARSHALL ISLANDS FILE TRACKING DOCUMENT

Record Number: 34

File Name (TITLE): Operation Order CTG No. 3-53
(Change No. 4)

Document Number (ID): 59433

DATE: 4/1954

Previous Location (FROM): CIC

AUTHOR: JTF7

Additional Information: _____

OrMIbox: 2

CyMIbox: 2

~~SECRET~~

Headquarters Task Group 7.2
Joint Task Force SEVEN
APO 187 c/o Postmaster
San Francisco, California
9 April 1954

Change
(No. 4)

CTG 7.2 Operation Order No. 3-53

1. The following corrections and inclosed added pages constitute Change No. 4 to CTG 7.2 Operation Order No. 3-53. Added pages should be inserted in their proper place.

2. Make the following pen and ink corrections:

ANNEX H, page H-4, paragraph 4i - Add "See Appendix I to Annex H".

OFFICIAL:

EDWARD H. LAHTI
Colonel, Infantry
Commander

Barton J. Mallory
BARTON J. MALLORY
Major Arty
S3

Changes Made

1 Incl:
Appendix I to Annex H, CTG 7.2 Operation Order
No. 3-53 consisting of pages H-I-1, H-I-2

DISTRIBUTION:
Holders of CTG 7.2 Operation Order No. 3-53

REGRADED UNCLASSIFIED ORDER
SEC ARMY BY DAMH PER 89055-16
23 JUN 1989

BEST AVAILABLE COPY

5-683-4

~~SECRET~~

UNCLASSIFIED

UNCLASSIFIED
~~SECRET~~

Appendix I to Annex H to CTG 7.2 Operation Order No. 3-53 (Cont'd)

e. S2 will plan and supervise final repository check for all elements of TG 7.2 and coordinate final check of Air Force areas with Headquarters, CTG 7.4.

f. S2, TG 7.2 will coordinate with all Task Groups maintaining repositories on ENIWETOK ISLAND, all necessary measures to insure compliance with Security Memo No. 11, CJTF SEVEN.

3. EVACUATION (E-HOUR):

a. Upon receipt of order to evacuate ENIWETOK ISLAND (E-hour) all CUSTODIANS will (1) store and secure all classified documents and/or materials for which they are responsible, (2) insure that they have in their possession a current inventory of all documents classified SECRET or higher and (3) be prepared to deliver inventories to CTG 7.2 on call.

b. SECRET - I/S CONTROL OFFICER will (1) evacuate and properly safeguard all inventories and distribution records of documents classified SECRET or higher, (2) evacuate his catalogue of repositories, (3) direct final repository check of Building #15 and report completion to CTG 7.2 (Attn: S2) prior to evacuation.

c. Signal (Crypto) Security Officer will execute appropriate plan as ordered and report completion to CTG 7.2 (Attn: S2) prior to evacuation.

d. Adjutant will evacuate all combinations (duplicate keys) of repositories used for storage of classified documents and/or materials.

e. Commander, MP Detachment will (1) designate one NCO and 4 MP's to report to the SECRET - TOP SECRET CONTROL OFFICER at E-Hour to assist in final repository check prior to evacuation, (2) perform a sweep of ENIWETOK ISLAND to insure that no personnel remain on the island.

f. CIC, CIC Detachment will designate three (3) men to report to S2, TG 7.2 to assist in final repository check.

g. A representative of CTG 7.4 and representatives of ENIWETOK elements of Task Groups 7.1, 7.3 and 7.5 will report to CTG 7.2 (Attn: S2) complete compliance with Security Memo No. 11, CJTF SEVEN prior to evacuation.

h. S2, TG 7.2 will supervise overall execution of the activities listed above and report completion to CTG 7.2.

4. REENTRY:

a. CUSTODIANS will inventory all repositories immediately on reentry and report results to CTG 7.2. In the event general reentry is impossible, CUSTODIANS will surrender their inventories to designated Recovery Teams who will recover and inventory contents of all (or specified) repositories under supervision of S2, TG 7.2.

b. Representative of CTG 7.4 and representatives of ENIWETOK elements of Task Groups 7.1, 7.3 and 7.5 will report results of inventory of repositories to CTG 7.2 (Attn: S2) as soon as possible after reentry.

William Troy
WILLIAM TROY
Lt Col, QMC
34

EDWARD H. LAHTI
Colonel, Infantry
Commander

H-1-2

BEST AVAILABLE COPY

~~SECRET~~

UNCLASSIFIED

Headquarters Task Group 7.2
Joint Task Force SEVEN
APO 187 c/o Postmaster
San Francisco, California
26 February 1954

Change
(No. 3)

CTG 7.2 Operation Order No. 3-53

The inclosed addition constitutes Change No. 3 to CTG 7.2 Operation Order 3-53 and will be inserted into proper place in subject order.

OFFICIAL:

EDWARD H. LAHTI
Colonel, Infantry
Commander

Barton Mallory
BARTON J. MALLORY
Major Arty
S-3

1 Incl:
Annex H to CTG 7.2
Operation Order No. 3-53

DISTRIBUTION:

Holders of CTG 7.2 Operation
Order No. 3-53
Plus
Army Property Officer, TG 7.2 - 1
Ordnance Maintenance, TG 7.2 - - 1
QM Laundry, TG 7.2 - - - - - 1
Commissary Officer, TG 7.2 - - - 1
Post Engineer, TG 7.2 - - - - - 1
Transportation Officer, TG 7.2 - 1
Surgeon, TG 7.2 - - - - - 1
Superintendent H&N
Eniwetok Island - - - - - 1
Liaison Officer, TG 7.3
Eniwetok Island - - - - - 1
Representative, TG 7.1 (Mr. G. Busch)
Eniwetok Island - - - - - 1

George W. ...

24 45

BEST AVAILABLE COPY

5-683-3

~~CONFIDENTIAL~~

Headquarters Task Group 7.2
Joint Task Force SEVEN
APO 187 c/o Postmaster
San Francisco, California
18 February 1954

Change
(No. 2)

CTG 7.2 Operation Order No. 3-53

The inclosed addition constitutes Change No. 2 to CTG 7.2 Operation Order 3-53 and will be inserted into proper place in subject order.

OFFICIAL:

EDWARD H. LAHTI
Colonel, Infantry
Commander

Barton J. Mallory
BARTON J. MALLORY
Major Arty
S3

1 Incl
Appendix III to Annex F to
Operation Order No. 3-53

DISTRIBUTION:
Holders of CTG 7.2 Operation
Order No. 3-53 Plus Radsafe
Officer, TG 7.2 - - - - - 5

Change Made
[Signature]

COPY 24 OF 40 COPIES

BEST AVAILABLE COPY

~~CONFIDENTIAL~~

S. 693.2

~~SECRET~~

Headquarters Task Group 7.2
Joint Task Force SEVEN
APO 187 c/o Postmaster
San Francisco, California
31 January 1954

Changes
(No. 1)

CTG 7.2 Operation Plan No. 3-53

1. The following corrections and inclosed revised pages constitute changes No. 1 to CTG 7.2 Operation Plan 3-53. Revised pages should be inserted in their proper places and the rescinded pages removed and destroyed in accordance with applicable security regulations.

2. CTG 7.2 Operation Plan No. 3-53 is effective as CTG 7.2 Operation Order No. 3-53 as of 20 January 1954.

3. Insert page for listing changes in a position to constitute cover sheet of order.

4. Make the following pen and ink corrections:

ANNEX G, page G-I-1, paragraph 1, fourth line -- Change "telephone number 27" to read "telephone number 4127".

ANNEX G, page G-I-1, paragraph 3b, first line -- Change "telephone 7 or 1" to read "telephone 3101 or 3107".

5. Remove and destroy rescinded page number G-6 and insert revised page G-6 in lieu thereof.

Changes Made

OFFICIAL:

Barton Mallory
BARTON J. MALLORY
Major Arty
S3

EDWARD H. LAHTI
Colonel, Infantry
Commander

2 Incls

1. Page for listing changes.
2. Revised page G-6.

DISTRIBUTION:

Holders of CTG 7.2 Operation Plan No. 3-53

COPY 24 OF 35 COPIES

BEST AVAILABLE COPY

~~SECRET~~

S-683-1

~~SECRET~~

Headquarters Task Group 7.2
Joint Task Force SEVEN
APO 187 c/o Postmaster
San Francisco, California
22 December 1953

ORDER (ASOG 1-30-54)
Operation ~~Plan~~ CTG 7.2, No. 3-53

- Chart References:
- a. U.S. Navy Hydrographic Chart No. 5203, North Pacific Ocean, Marshall Islands.
 - b. U.S. Navy Hydrographic Chart No. 6032, North Pacific Ocean, Marshall Islands - Northern Part - Bikini Atoll.
 - c. U.S. Navy Hydrographic Chart No. 6033, North Pacific Ocean Marshall Islands, Eniwetok Atoll.

Task Organization: See Annex A, Task Group Organization

1. GENERAL:

a. Scope of Instructions:

(1) This operation plan covers the period of operations from the time major elements of Joint Task Force SEVEN are deployed in the forward area until the completion of on-site operations. It supports Commander Joint Task Force SEVEN (CJTF SEVEN) Operation Plan 3-53 and is published at this time for planning purposes only. It is subject to periodic revisions as more detailed information becomes available. When so directed by the Commander Task Group 7.2 (CTG 7.2), this plan will become effective as an operation order covering overall on-site operations of this Task Group and will supersede CTG 7.2 Operation Order 1-53.

(2) "Forward Area", as the term is used in this plan, is defined as that area encompassing the MARSHALL ISLANDS.

(3) "ENIWETOK/BIKINI Danger Area", as the term is used in this plan, is that area encompassing ENIWETOK and BIKINI ATOLLS and bounded by the meridians 160°35' - 166°16' east longitude, and by the parallels 10°15' - 12°45' north latitude (an area of 150 by 350 miles).

(4) "Closed Area", as the term is used in this plan, is defined as including the land areas of ENIWETOK and BIKINI ATOLLS, the water areas of the respective lagoons and the water areas within three (3) miles to the seaward side of the respective land areas.

b. General Situation:

(1) In accordance with directives of the Joint Chiefs of Staff (JCS), Commander Joint Task Force SEVEN (CJTF SEVEN) will conduct tests of experimental weapons and devices on Eniwetok and Bikini Atolls early in 1954.

(2) The function of CTG 7.2 as Atoll Commander Eniwetok and Bikini Atolls (ATCOM ENIWETOK) passes to CJTF SEVEN upon the concentration of forces of JTF SEVEN in the forward area and upon arrival of CJTF SEVEN in the forward area.

(3) Intelligence, Security and Public Information - Annex C applies.

(4) Friendly Forces. Elements of all US Military Forces of JTF SEVEN and the AEC to include the AEC civilian contractor group included in this operation.

(a) Scientific Task Group (TG 7.1)

(b) Naval Task Group (TG 7.3)

5-683

~~SECRET~~

BEST AVAILABLE COPY

~~SECRET~~

Operation Plan CTG 7.2, No. 3-53 (Cont'd)

(c) Air Force Task Group (TG 7.4)

(d) AEC Base Facilities Task Group (TG 7.5)

2. MISSION: CTG 7.2 will:

a. Provide a mobile defense force for the ground security of ENIWETOK and BIKINI ATOLLS.

b. Operate port, base and military communications facilities at ENIWETOK and certain military installations at BIKINI in accordance with existing AEC-DOD agreements.

c. Provide and operate the overall military communications system for handling all forward area Joint Task Force inter-atoll and long-haul traffic (exclusive of air operations, air weather, internal naval communications and the TG 7.1 inter-atoll radio circuit).

d. With certain personnel augmentation from TG 7.4, provide certain logistic support for those elements of the Joint Task Force based on ENIWETOK ISLAND.

Refer to Annex B for CTG 7.2 Summary of Tasks.

3. TASKS FOR SUBORDINATE UNITS:

a. Headquarters and Headquarters Detachment, 7126 AU and Augmentations:

(1) Provide overhead administrative, and operational support for the ENIWETOK Garrison Force.

(2) Render support to Headquarters JTF SEVEN and TG 7.2 in forward area as required.

b. Port Detachment, 7126 AU:

(1) Maintain and operate the ENIWETOK port facilities to include stevedoring.

c. Service Detachment, 7126 AU and Augmentations:

(1) Provide overhead support to the ENIWETOK Garrison Force.

d. Truck Detachment, 7126 AU:

(1) Maintain and operate the ENIWETOK consolidated motor pool.

e. Military Police Detachment, 7126 AU:

(1) Establish MP posts to control access into Security Areas as established by CJTF SEVEN.

(2) Conduct security patrols (islands sweeps) within ENIWETOK-BIKINI Atolls as outlined in Annex C.

f. Signal Detachment, 7126 AU:

(1) Provide and operate the TG 7.2 Communication System.

(2) Provide and operate the overall military communications system for handling all forward area Joint Task Force inter-atoll and long-haul traffic (exclusive of air operations, air weather, internal naval communications and the TG 7.1 inter-atoll radio circuit).

BEST AVAILABLE COPY

2

~~SECRET~~

~~SECRET~~

Operation Plan CTG 7.2, No. 3-53 (Cont'd)

g. Navy Detachment, TG 7.2

(1) Operate TG 7.2 Boat Pool to provide marine support to TG 7.2 as required.

h. 18 MP CID:

Conduct criminal investigation program as directed.

i. Provisional CIC Detachment:

Function under operational control of CJTF SEVEN as directed.

j. Communication Security Detachment, 8600 AAU:

Function under operational control of CJTF SEVEN as directed.

x. (1) Upon order of CTG 7.2 assume alert status in accordance with CTG 7.2 Hostile Alert Plan (Annex G).

(2) Be prepared on order of CTG 7.2, to conduct emergency post-shot evacuation from ENIWETOK Island (Annex H).

(3) Assure security and safeguarding of military information by all personnel.

(4) Execute radiological defense monitoring and decontamination services upon order of CTG 7.2.

(5) Exercise maximum economy in the conduct of all operations by effecting the most efficient use of manpower, resources and funds.

4. ADMINISTRATIVE AND LOGISTICAL MATTERS:

CTG 7.2 Administrative Order No. 2-53 applies.

5. COMMAND AND SIGNAL MATTERS:

a. Communications - Annex E applies.

b. Command Posts -

	ENIWETOK -
(1) CTG 7.2	Bldg # 15
(2) CO, Hq & Hq-Det	Bldg # 502
(3) CO, Svc Det	Tent # 1, Row "H"
(4) CO, MP Det	Bldg # 136
(5) CO, Port Det	Tent # 1, Row "M"
(6) CO, Trk Det	Bldg # 14
(7) CO, Sig Det	Bldg # 15
(8) CO, Navy Det, TG 7.2	Bldg # 15
(9) Provisional CIC Det	Bldg # 11
(10) 18 MP CID	Bldg # 136
(11) Comm Scty Det, 8600 AAU	Bldg # 85

~~SECRET~~

BEST AVAILABLE COPY

~~SECRET~~

Operation Plan No. 3-53 (Cont'd)

Edward H. Lahti

EDWARD H. LAHTI
Colonel, Infantry
Commander

ANNEXES:

A. Organization

Appendix:

I Organization Chart TG 7.2

B. Task Group 7.2 Summary of Tasks

C. Intelligence, Security

Appendix:

I Military Police Requirements

D. Troop List

E. Communications

Appendix:

I Standing Signal Instructions, Combat Company

F. Radiological Safety

Appendix:

I Radiological Safety Regulations

II Radiological Safety Organization

G. Hostile Action Alert Plan

Appendix:

I Alert Action - Sequence of Events

II Task Organization for Combat

III Ammunition

IV Beaching Conditions at Eniwetok and Bikini Atolls

V Inter-Island Flying Times, Eniwetok and Bikini Atolls

VI Average Running Times for Marine Craft, Eniwetok and Bikini Atolls

VII Control of Electronic Emissions and Surface Lighting

VIII Air Defense

IX Atomic, Biological and Chemical (ABC) Defense Plan

X Map of Eniwetok Island

H. Shot Phase Emergency Evacuation and Reentry Plan

BEST AVAILABLE COPY

~~SECRET~~

~~SECRET~~

Operation Plan CTG 7.2, No. 3-53 (Cont'd)

DISTRIBUTION:

<u>ADDRESSEE</u>	<u>COPY NUMBER(S)</u>
CJTF SEVEN	1-2-3
CINCPAC	4
CINCPACFLT	5
CTG 7.1	6
CTG 7.2	7
CTG 7.3	8
CTG 7.4	9
CTG 7.5	10
CO, Navy Det, TG 7.2	11
CO, Hq Det, 7126 AU	12
CO, Svc Det, 7126 AU	13
CO, MP Det, 7126 AU	14
CO, Trk Det, 7126 AU	15
CO, Port Det, 7126 AU	16
CO, Sig Det, 7126 AU	17
S1, TG 7.2	18
S2, TG 7.2	19
S3, TG 7.2	20
S4, TG 7.2	21
S5, TG 7.2	22
AEC Resident Engineer, APO 187 (HOW) US Army	23
CO, Port Det, 7126 AU	24
CO, Comm Scty Det, 8600 AAU	25
CO, 18 MP CID	26
AG Files, TG 7.2	27-35

Copy 24 to JTF 7
Advance Hqs Pearl.

BEST AVAILABLE COPY

5

~~SECRET~~

Headquarters Task Group 7.2
Joint Task Force SEVEN
APO 187 c/o Postmaster
San Francisco, California
22 December 1953

Annex A to CTG 7.2 Operation Plan No. 3-53

ORGANIZATION

1. The composition and structure of Task Group 7.2 is in accordance with the following directives of CJTF SEVEN:

a. Operation Order 4-52 (Then CJTF 132).

b. Operation Order 3-53.

2. The Army elements of TG 7.2 are organized pursuant to GO 3, CTG 7.2, 15 July 52 (Auth: GO 14, CJTF SEVEN, 10 July 53).

OFFICIAL:

EDWARD H. LAHTI
Colonel, Infantry
Commander

Barton J. Mallory
BARTON J. MALLORY
Major Arty
S3

Appendix: Organization Chart TG 7.2.

BEST AVAILABLE COPY

~~SECRET~~

Headquarters Task Group 7.2
Joint Task Force SEVEN
APO 187 c/o Postmaster
San Francisco, California
22 December 1953

Annex B to Operation Plan No. 3-53

TASK GROUP 7.2 SUMMARY OF TASKS

The following is a summary of tasks to be accomplished by the Army Task Group during the CASTLE on-site operational phase. CTG 7.2 will:

- a. Provide for the ground security of ENIWETOK and BIKINI ATOLLS in accordance with Annex G, Hostile Action Alert Plan.
- b. Continue to operate all base facilities at ENIWETOK ISLAND, except those specifically allocated to CTG 7.4 and CTG 7.5, in accordance with existing agreements.
- c. Conduct port and stevedoring operations at ENIWETOK ATOLL with stevedoring assistance made available by CTG 7.5 in accordance with existing agreements.
- d. Take measures to prevent unauthorized entry into exclusion areas, coordinating this activity with CTG 7.5.
- e. Operate and maintain a TG 7.2 boat pool at ENIWETOK.
- f. Provide and operate the overall military communications system for handling of all forward area task force inter-atoll and long-haul traffic (exclusive of air operations, air weather, internal nava. communications and the TG 7.1 inter-atoll radio circuit).
- g. Provide support services for Headquarters, JTF SEVEN, as required. Contemplated requirements will include medical and mess personnel and equipment, transportation services, routine supply and administrative and housekeeping assistance.
- h. Be prepared, on order of CJTF SEVEN, to conduct emergency post-shot evacuation from ENIWETOK ATOLL of all personnel based on ENIWETOK ISLAND.
- i. Provide monitoring and decontamination services as directed.
- j. Deny entry of personnel into ENIWETOK and BIKINI ATOLLS to those individuals not appropriately cleared.
- k. Provide for the general surveillance of ENIWETOK and BIKINI ATOLLS to insure against removal by unauthorized agents of significant samples from shot islands and to prevent unauthorized photography and trespassing.
- l. With certain personnel augmentation from TG 7.4, provide certain logistic support for those elements of the Joint Task Force based on ENIWETOK ISLAND.
- m. Ship all equipment and material as it becomes surplus in accordance with instructions from CJTF SEVEN.
- n. Conduct liaison with CTG 7.5 to the end that his support requirements are met, particularly as they relate to security and stevedoring facilities.

BEST AVAILABLE COPY

OFFICIAL:

Barton J. Mallory
BARTON J. MALLORY
Major Arty

EDWARD H. LAHTI
Colonel, Infantry
Commander

S3

~~SECRET~~

~~SECRET~~

Headquarters Task Group 7.2
Joint Task Force SEVEN
APO 187 o/o Postmaster
San Francisco, California
22 December 1953

Annex C to CTG 7.2, Operation Plan No. 3-53

INTELLIGENCE, SECURITY AND PUBLIC INFORMATION

- Map References:
- a. Azimuthal Equidistant Projection Map, No. 6709, Hydrographic Office, Washington, D.C.
 - b. Naval Survey Map, Marshall Islands, Eniwetok Atoll, Nos. 5413, 5205 and 6033, Hydrographic Office, Washington, D.C.
 - c. Naval Survey Map, Marshall Islands, Bikini Atoll, No. 6032, Hydrographic Office, Washington, D.C.
 - d. Eniwetok Building Layout, 1":400', 6 Mar 53.
 - e. Sea-Air Rescue Map for Eniwetok Atoll, 4 Jan 53.
 - f. Sea-Air Rescue Map for Bikini Atoll, 3 Jul 53.

1. INTELLIGENCE - GENERAL:

a. No interference is expected from an overt enemy during Operation CASTLE since the use of force or direct open observation from a point well within the ENIWETOK-BIKINI danger area would involve consequences out of proportion to the value of the results to be obtained from such action.

b. The country having the greatest capability of compromising the security of Operation CASTLE is the Soviet Union.

c. In the event of an outbreak of war the entire concept of the operation would be changed materially.

2. SUMMARY OF ENEMY CAPABILITIES:

a. It is considered that interference with the mission or compromise of its activities could be effected by espionage, sabotage, overt action by vessel or aircraft, raids, observation, unauthorized instrumentation and declaration of war.

b. Naval Capabilities. The USSR has 19 ocean patrol and 37 medium range type submarines in the Pacific area. It is estimated that at least 4 to 5 ocean patrol submarines could be maintained in the ENIWETOK-BIKINI operational area indefinitely and for short periods this number could be increased. Unobserved submarine approach within one mile of important islands of these atolls is possible.

c. Air Capabilities. **BEST AVAILABLE COPY**

(1) Aerial photo and radiological reconnaissance of the ENIWETOK-BIKINI area from Far East bases (SAKHALIN or the KURILES) are within Soviet capabilities. With prior access to CASTLE plans, reconnaissance flights could be properly timed to permit aircraft to remain in the target area for a brief period. The Tu-4, modified for long range reconnaissance, could accomplish this without refueling. Assuming that the Soviets have developed refueling techniques equal to those of the U.S., one outbound refueling would extend the time over target to over four hours. There is no evidence, however, that the Soviets have developed refueling capabilities. The Third Long Range Air Army, stationed in the Far East, is presently estimated to have a TO/E strength of 220 Tu-4s. No aircraft of this type is known to be modified for long range reconnaissance.

C-1

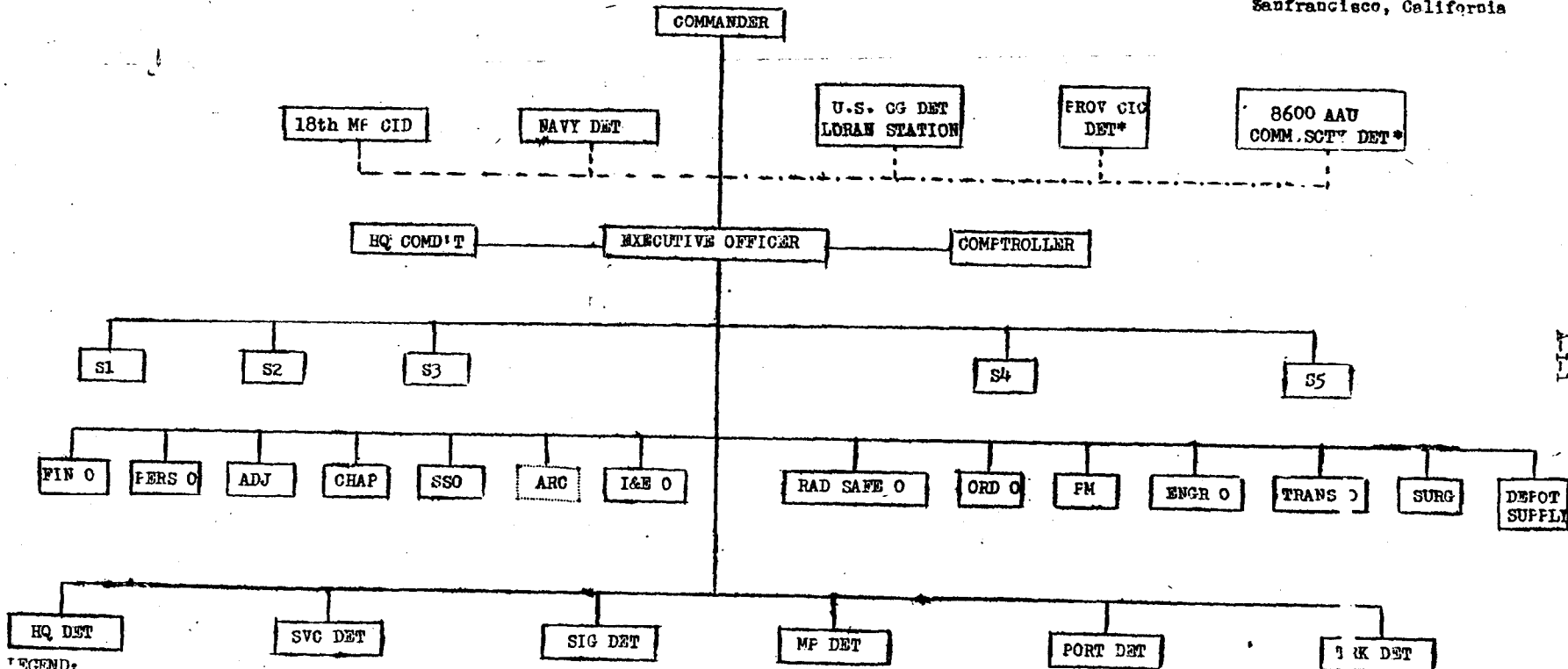
~~SECRET~~

BEST AVAILABLE COPY

Appendix I to Annex A, CTG 7.2
 Operation Plan 3-53

TASK GROUP 7.2 ORGANIZATION CHART

Headquarters Task Group 7.2
 Joint Task Force SEVEN
 APO 187 c/o Postmaster
 San Francisco, California



LEGEND:
 - - - - - OPERATIONAL CONTROL
 _____ COMMAND
 BASE FACILITIES SUPPORT
 * UNDER OPERATIONAL CONTROL OF CJTF SEVEN

~~SECRET~~

Annex C to CTG 7.2, Operation Plan 3-53 (Cont'd)

(2) The only Soviet aircraft known to have a greater range potentiality than the TU-4 is the Type 31 prototype heavy bomber, which was observed in flight for the first time to date in the July 1951 Aviation Day air show in MOSCOW. If equipped with the JU-022 turboprop engine, the Type 31 would have a combat radius of about 3500 nautical miles and considerably in excess of this if the combat load were replaced with fuel. A few aircraft are probably available having range capabilities comparable to the Type 31. It is entirely possible, however, that the Soviets might equip an early model of the Type 31 for photo and radiological reconnaissance if a sufficiently high priority exists for this requirement.

3. CONCLUSIONS: Espionage, sabotage, observation and unauthorized instrumentation are considered most likely to occur under conditions existing today. The declaration of war, overt action by vessel or aircraft and raids are less likely possibilities which could take place in the event of open hostilities between the U.S. and the USSR.

4. SECURITY RESPONSIBILITY:

a. Security of classified information is the normal responsibility of any commander but this responsibility must be reevaluated in Operation CASTLE where the operation is dealing with atomic energy, a development which played an important part in terminating World War II and which constitutes such importance that it has been regulated, controlled and protected by Federal law. The responsibility of each individual in properly safeguarding classified information concerning atomic energy and in preventing its compromise by careless talk or correspondence must be understood by all military ranks and civilians.

b. CTG 7.2 is responsible for proper security within TG 7.2 and for security of classified information and areas, including entry, within the forward area as directed by CJTF SEVEN. The Intelligence Officer (S2) TG 7.2 discharges for the Commander the functions of security planning, coordination, and policy, and the maintenance of security planning, coordination, and policy, and the maintenance of necessary security records, and maintains liaison with other appropriate security sections and agencies. The Provost Marshal, TG 7.2, discharges for the Commander the function of enforcement of security measures and control, exercising operational control of all Military Police units assigned to TG 7.2 for this purpose. Military Police Posts will be established as listed in Appendix I.

5. GENERAL CONCEPT: The general conception of the measures to provide security is as follows:

a. The ENIWETOK-BIKINI area of operations will be closed to all vessels, aircraft and personnel except those participating in CASTLE. Access to this area will be in accordance with regulations established by CINCPAC Serial 020, dated 1 April 1952. All areas within the ENIWETOK-BIKINI operational area will be designated in accordance with the degrees of security required.

b. Personnel participating in the operation will be cleared for loyalty and security in accordance with the varying degrees of responsibility.

c. The ENIWETOK-BIKINI area of operations is under the general protection of CINCPAC.

d. Regulations governing security published by the Department of Defense and Atomic Energy Commission continue to apply to members of Joint Task Force SEVEN.

- (1) AR 380-5 and SR 380-5-1) For appropriate units
- OPNAV Instructions 551.1)
- AFR 205-1)
- GM Security Bulletins) **BEST AVAILABLE COPY**
- (2) Hq JTF SEVEN Memoranda)

~~SECRET~~

~~SECRET~~

Annex C to CTG 7.2, Operation Plan No. 3-53 (Cont'd)

Espionage Act }
Atomic Energy Act of 1946 } Apply to all members of
AEC-DOD classification criteria) Joint Task Force SEVEN

e. Each unit commander participating in Operation CASTLE will be responsible for the security training of members of his unit. All personnel will be required to pass basic security examinations required by CTG 7.2 Security Memoranda Numbers 2 and 3. The examinations will be on file in the office of S2, Task Group 7.2 prior to beginning of operational phase.

f. Each unit will have an officer designated as Security Officer, whose primary duties will be security training, enforcement of security regulations, and supervising, grading and recording the results of security examinations.

6. PERSONNEL CLEARANCES: All personnel TG 7.2 present during Operation CASTLE will be cleared for SECRET or higher. Commanders or staff section chiefs, having personnel requiring TOP SECRET or "Q" clearances are responsible for submission of timely applications for desired clearance to S2, TG 7.2.

7. CLASSIFICATION CRITERIA: Pending publication of a Classification Guide for Operation CASTLE, all documents requiring classification should be submitted to S2, TG 7.2 for classification.

8. TRAVEL SECURITY CONTROL:

a. All personnel arriving at ENIWETOK-BIKINI operational area without proper clearance under CINCPAC Serial O2O will be restricted to ENIWETOK ISLAND with access only to unclassified material. Isolation and control of such personnel will be the responsibility of the Military Police Detachment, 7126 AU.

b. Travel to Exclusion and Limited Areas within the ENIWETOK-BIKINI area will be in accordance with CJTF SEVEN Security Memorandum Number 8, 23 November 53.

9. SECURITY AREAS:

a. The ENIWETOK-BIKINI Danger Area consists of three (3) classified area categories, i.e., Exclusion Areas, Limited Areas, and Closed Areas. For definitions of these areas see:

(1) AEC GM Security Bulletin No. 18.

(2) Opn O 3-53 CJTF SEVEN.

b. These areas will be established by JTF SEVEN and access controlled by badge identification system. The internal security of these areas is the responsibility of the Military Police.

c. Clearance requirements for access to these security areas will be in accordance with directives of CTG 7.5.

10. CONTRABAND:

a. Unless authorized by specific orders to individuals, possession of items of ~~material~~, ~~information~~, ~~communication~~, in the ENIWETOK-BIKINI Area, is prohibited and the items considered contraband.

(1) All photographic equipment. **BEST AVAILABLE COPY**

(2) All equipment adaptable for use in either visual or electrical communication.

(3) All materials with explosive capabilities.

~~SECRET~~

~~SECRET~~

Annex C to CTG 7.2, Operation Plan No. 3-53 (Cont'd)

- (4) All optical equipment.
- (5) All weapons.
- (6) All drugs and intoxicating beverages.

b. Items of contraband will be confiscated and a report will be made to CTG 7.2, ATTN: S2.

c. Film found in the possession of unauthorized persons will be confiscated and delivered to CTG 7.2, ATTN: S2 for proper disposition.

11. PHOTOGRAPHY: Only official photography is authorized in the ENIWETOK-BIKINI operational area. All official photography will be classified in accordance with AEC-DOD regulations but in no case lower than CONFIDENTIAL.

12. COMMUNICATIONS SECURITY: The security and monitoring of communications will be accomplished under the direction of CJTF SEVEN.

13. COUNTERINTELLIGENCE: The Commander JTF SEVEN will have operational control of all CIC units. The Commander, TG 7.4 will have operational control of all OSI agents, whose activities will, in general, be confined to Air Force matters.

14. SECURITY PATROLS:

a. Security sweeps of ENIWETOK ATOLL will be conducted by the Military Police Detachment, 7126 AU in accordance with CTG 7.2 SOP 125-2 dated 23 October 53.

b. Security sweeps of BIKINI ATOLL will be conducted by the Military Police Detachment, 7126 AU as directed by CTG 7.2.

15. INSPECTIONS: Inspections will be conducted upon arrival of personnel and periodically thereafter to detect security violations and contraband and to insure the use of proper identification credentials and proper safeguarding of classified matter. Individuals are responsible for reporting security violations which come to their attention to CTG 7.2 (ATTN: S2).

16. PUBLIC INFORMATION:

a. CTG 7.2 does not release any public information.

b. Releases to the press in regard to Joint Task Force SEVEN operations and activities are made only by the AEC or DOD.

c. Personnel of TG 7.2 are prohibited from releasing any information for publication, in regard to the Joint Task Force or its activities. They must neither confirm nor deny any articles appearing in the press. Queries from the press or elsewhere will be referred to DOD-AEC releases.

d. Department of Defense-Atomic Energy Commission releases, when made, will be disseminated to units of Joint Task Force SEVEN through normal communication channels at the earliest possible time.

OFFICIAL:

E. F. Wandel
EUTH F. WANDEL
Major Arty
S2,

FORWARD H. [unclear]
Colonel, Infantry
Commander

APPENDIX:
Military Police Requirements

C-4

BEST AVAILABLE COPY

~~SECRET~~

BEST AVAILABLE COPY

Appendix 1 To Annex C CTG 7.2 Operation Order 3-53

ENIWETOK ISLAND MAIN BODY MILITARY POLICE COMPANY

<u>AEC Requirements</u>	<u>Active</u>		<u>Number Of Posts</u>	<u>Hours Manned</u>	<u>MPs</u>	<u>Remarks</u>
	<u>From</u>	<u>To</u>				
None						
<u>Military Requirements</u>						
Air Strip	1 Jan 54	End of Opn	1	12	2	
MATS Terminal	1 Jan 54	End of Opn		24	4	Four men assigned permanent duty here. (This will provide two patrols at night and one patrol during day.)
Motor Patrol (night & day)	1 Jan 54	End of Opn	2	24	8	
Motor Patrol (night)	1 Jan 54	End of Opn	2	12	4	
POL Guard	1 Jan 54	End of Opn	1	12	2	
Sweeps (total for all Eniwetok Islands)	1 Jan 54	End of Opn			5	
First Sergeant	1 Jan 54	End of Opn			1	
Desk Sergeant	1 Jan 54	End of Opn	1	24	4	
Operations Sergeant	1 Jan 54	End of Opn			1	
Personnel Clerk	1 Jan 54	End of Opn			1	
Supply Clerk	1 Jan 54	End of Opn			1	
Mail Clerk	1 Jan 54	End of Opn			1	
Armorer	1 Jan 54	End of Opn			1	
Photo-EP Clerk	1 Jan 54	End of Opn			1	
Escort Duty	1 Jan 54	End of Opn			2	Required to escort non-cleared personnel to Parry Island and Eboriru. (Site RUBY)
Communications Sergeant	1 Jan 54	End of Opn			1	Not yet requested by CTG 7.5; requirement indicated in letter showing physical requirements.
117 Compound	1 Jan 54	End of Opn			4	
Total MPs					43	

REGRADED: RESTRICTED - 1 June 1954

BEST AVAILABLE COPY

PARRY ISLAND

<u>AWO Requirements</u>	<u>Active</u>		<u>Number Of Posts</u>	<u>Hours</u>		<u>Remarks</u>
	<u>From</u>	<u>To</u>		<u>Manned</u>	<u>MFs</u>	
Assembly Area Excl Area	1 Jan 54	End of Opn	4	24	16	
CMR Compound cryogenic plant	1 Jan 54	End of Opn	2	24	8	
Control Compound	29 Mar 54	3 Apr 54	1	24	4	
<u>Administrative Compound:</u>						
East Gate	1 Jan 54	End of Opn	1	24	4	
North Gate	1 Jan 54	End of Opn	1	12	2	
Walking Patrol (night)	1 Jan 54	End of Opn	1	12	2	
Corridor (day only)	1 Jan 54	End of Opn	1	9	2	
Personnel pier	1 Jan 54	End of Opn	1	24	4	
Freight pier	1 Jan 54	End of Opn	1	24	4	
Marine Ramp	1 Jan 54	End of Opn	1	24	4	
Air Strip	1 Jan 54	End of Opn	1	12	2	
Motor Patrol (night & day)	1 Jan 54	End of Opn	1	24	4	This will provide two patrols at night and one patrol during day.
Motor Patrol (night)	1 Jan 54	End of Opn	1	12	2	
<u>Military Requirements</u>						
First Sergeant	1 Jan 54	End of Opn			1	
Desk Sergeant	1 Jan 54	End of Opn	1	24	4	
Clerk	1 Jan 54	End of Opn			1	
Escort	1 Jan 54	End of Opn			3	
Sweep	1 Jan 54	End of Opn			1	Sweep personnel for all Eniwetok Islands are shown in Eniwetok MF Detachment
LSD - Off Shore for shot 4	15 Jan 54	13 Mar 54	1	24	4	
				Total MFs	<u>72</u>	

CONFIDENTIAL

CONFIDENTIAL
C-I-2

BEST AVAILABLE COPY

EBERIRU ISLAND - SITE RUBY

<u>AEC Requirements</u>	<u>Active</u>		<u>Number</u>	<u>Hours</u>	<u>MPs</u>	<u>Remarks</u>
	<u>From</u>	<u>To</u>	<u>Of Posts</u>	<u>Manned</u>		
Pier	1 Jan 54	End of Opn	1	24	4	
Zero Compound Excl Area	1 Feb 54	End of Opn	3	24	12	
Motor Patrol	1 Jan 54	End of Opn	1	24	4	
Air Strip - Aomon	1 Jan 54	End of Opn	1	12	2	
<u>Military Requirements</u>						
Desk Sergeant	1 Jan 54	End of Opn	1	24	4	Senior Desk Sergeant will also be acting 1st Sgt
Clerk & Escort	1 Jan 54	End of Opn			1	
Sweep	1 Jan 54	End of Opn			1	
			Total MPs		<u>28</u>	

C-1-3

CONFIDENTIAL

BEST AVAILABLE COPY

BIKINI - ENINMAN ISLAND - SITE TARE

<u>AEC Requirements</u>	<u>Active</u>		<u>Number Of Posts</u>	<u>Hours Manned</u>	<u>MPs</u>	<u>Remarks</u>
	<u>From</u>	<u>To</u>				
Zero Compound Excl Area	1 Jan 54	17 Mar 54	3	24	12	
Administration Building	1 Jan 54	17 Mar 54	1	24	4	
Air Strip	1 Jan 54	17 Mar 54	2	24	8	
Mole Pier Ramp	1 Jan 54	17 Mar 54	2	24	8	
Motor Patrol (night)	1 Jan 54	17 Mar 54	2	12	4	
Motor Patrol (day)	1 Jan 54	17 Mar 54	1	12	2	
<u>Military Requirements</u>						
Desk Sergeant	1 Jan 54	17 Mar 54	1	24	4	
First Sergeant	1 Jan 54	17 Mar 54			1	
Arm & Supply Clerk	1 Jan 54	17 Mar 54			1	
Administrative Clerk	1 Jan 54	17 Mar 54			1	
Escort	1 Jan 54	17 Mar 54			3	
Sweep	1 Jan 54	17 Mar 54			2	
			<u>Total MPs</u>		<u>50</u>	

6-1-4

CONFIDENTIAL

CONFIDENTIAL

BEST AVAILABLE COPY

BIKINI - NAMU ISLAND - SITE CHARLIE

<u>AMC Requirements</u>	<u>Active</u>		<u>Number Of Posts</u>	<u>Hours Manned</u>	<u>MPs</u>	<u>Remarks</u>
	<u>From</u>	<u>To</u>				
Pier or Ramp	1 Jan 54	15 Feb 54	1	24	4	
Zero Compound	9 Feb 54	15 Feb 54	2	24	8	Seven day requirement only.
Helicopter Pad	1 Jan 54	15 Feb 54	1	12	2	
<u>Military Requirements</u>						
Desk Sergeant	1 Jan 54	15 Feb 54	1	24	4	Senior Desk Sergeant also acts as 1st Sergeant.
Escort & Clerk	1 Jan 54	15 Feb 54			1	Clerk performs additional duty as escort.
Sweep	1 Jan 54	15 Feb 54			1	
			<u>Total MPs</u>		<u>20</u>	

0-1-5

CONFIDENTIAL

CONFIDENTIAL

BEST AVAILABLE COPY

BIKINI - ENYU - SITE NAN

<u>AEC Requirements</u>	<u>Active</u>		<u>Number Of Posts</u>	<u>Hours Manned</u>	<u>MPs</u>	<u>Remarks</u>
	<u>From</u>	<u>To</u>				
Pier or Ramp	1 Jan 54	17 Mar 54	1	24	4	
Control Building #70	10 Feb 54	17 Mar 54	1	24	4	Not a full time post. Only manned as required by CTG 7.5
<u>Military Requirements</u>						
Desk Sergeant	1 Jan 54	17 Mar 54	1	24	4	Senior Desk Sergeant, also acts as 1st Sgt.
Escort & Clerk	1 Jan 54	17 Mar 54			1	Additional duties as clerk, supply & armorer.
Sweep	1 Jan 54	17 Mar 54			1	
			Total MPs		<u>14</u>	

CONFIDENTIAL

CONFIDENTIAL

C-1-6

Headquarters Task Group 7.2
Joint Task Force SEVEN
APO 187 c/o Postmaster
San Francisco, California
22 December 1953

Annex E to CTG 7.2 Operation Plan No. 3-53

COMMUNICATIONS

1. GENERAL:

a. Purpose: This annex establishes the communication policies of Task Group 7.2 in conformance with Annex L to CJTF SEVEN Operation Plan No. 3-53.

b. Guiding Principles:

(1) Communications will be handled in the most expeditious manner possible, consistent with accuracy and security.

(2) Particular attention will be given to maintenance of communication security as outlined in ACP 122 (B).

(3) Land-line cables and submarine cables are approved for SECRET transmissions. However, no radio circuit, nor wire circuit with a radio link, is approved for handling classified information.

(4) TOP SECRET and RESTRICTED DATA will in no case be transmitted by electrical means in the clear.

(5) Code names will not be assigned to individuals. The use of personal names on voice radio circuits is authorized.

(6) Radio teletype facilities will be used in lieu of voice radio whenever practicable for communication security reasons.

(7) Close attention will be given to proper message drafting as outlined in ACP 121 (B). In preparing messages drafters will give particular attention to correct precedence so that truly urgent messages will not be delayed, and to classification so that unnecessary classified information does not cause upgrading.

(8) Personal emergency message service on a strictly controlled basis, as well as the EFM messages, will be available to all personnel of this command.

(9) The use of personal codes, ciphers or authentication systems is strictly forbidden.

(10) SOI issued by this headquarters will supplement instructions contained herein.

c. Operational Concept:

BEST AVAILABLE COPY

(1) Joint Relay Center. All organizations within the Atomic Energy Proving Grounds will be served by one permanent relay -crypto center at ENIWETCK installed, operated, and maintained by TG 7.2. Tributary stations serviced by this relay center will include: Hq; JTF SEVEN, TG 7.2, TG 7.3 (afloat), TG 7.4, and ships as required. Headquarters, JTF SEVEN communications center will protect for TG 7.1, TG 7.5 and TG 7.3 (ashore). In addition, routine naval administrative communications will be handled through established naval communication facilities.

(2) Crypto Center: Crypto Center, ENIWETCK, will be crypto guard for all above mentioned tributary stations except TG 7.3 (afloat). Radio teletype circuits between the following points will provide rapid communications between major forward and rear echelon Task Force elements and will be operated with ON-LINE encryption, using SIGTOT with SAMSON

~~SECRET~~

Annex E to CTG 7.2 Operation Plan No. 3-53 (Cont'd)

(synchronous mixer), for teletype traffic up to and including SECRET:

<u>CIRCUIT</u>	<u>TYPE</u>
ENIWETOK - OAHU (UHF)	Full Dux (1)
ENIWETOK - BIKINI	Full Dux (1)
PARRY - BIKINI (TG 7.1 Circuit)	Full Dux (1)
ENIWETOK - KWAJALEIN	Full Dux (1)
ENIWETOK - LOS ALAMOS	Full Dux (1)
ENIWETOK - AGC (USS ESTES)	Full Dux (1)

ALL TOP SECRET and RESTRICTED DATA traffic will be enciphered off-line, prior to transmission. This is necessary to meet AEC requirements and because terminal communications personnel are not in all instances TOP SECRET or "Q" cleared.

(3) Telecon Facilities: Telecon facilities will be available at Headquarters JTF SEVEN (PARRY ISLAND). Requests for this service will be submitted in accordance with COI item 29-1.

(4) Local Telephone Facilities: Wire telephone facilities cleared for conversations up to and including SECRET will be available at:

(a) ENIWETOK ISLAND (400 line dial exchange with connecting service to other islands of ENIWETOK ATOLL).

(b) BIKINI ATOLL (connecting service between necessary islands of BIKINI ATOLL).

(c) PARRY ISLAND (220 line manual with connecting service to other islands of ENIWETOK ATOLL).

(5) VHF Radio Backup: VHF radio relay equipment will be provided at key points as a backup for wire and cable telephone facilities, but communications will be limited to unclassified conversations and message traffic when such facilities are in use.

(6) HF-Voice Radio Circuits: Long-distance and inter-atoll radio facilities using HF equipment will be limited to those authorized by CJTF SEVEN. These voice radio circuits will be limited to unclassified matter and will be closely monitored. The following long distance voice radio circuits will be available on a closely controlled basis between the following points:

(a) ENIWETOK/PARRY - BIKINI ATOLL (Controlled by CJTF SEVEN).

(b) TG 7.1 PARRY - BIKINI ATOLL (Controlled by CTG 7.1).

(c) ENIWETOK - BIKINI ATOLL - KWAJALEIN (Controlled by TG 7.4 for the control of air movement traffic only).

(d) Air Operations Center (AOC) ENIWETOK - Combat Information Center (CIC), USS ESTES (Controlled by TG 7.4 for air operations).

BEST AVAILABLE COPY

3. MISSION:

Install, operate and maintain those communications facilities and render those services as directed by CJTF SEVEN.

E-2

~~SECRET~~

3. TASKS FOR SUBORDINATE UNITS:

a. Signal Detachment 7126 AU:

- (1) Operate and maintain relay center, ENIWETOK.
- (2) Operate and maintain communications centers for Headquarters, JTF SEVEN (PARRY ISLAND); Headquarters, TG 7.2 (ENIWETOK ISLAND) and in support of AEC operations at BIKINI ATOLL.
- (3) Provide crypto guard facilities for Headquarters, JTF SEVEN, TG 7.1, 7.2, 7.4, 7.5 and for other than intra TG 7.3 (ashore) traffic. CTG 7.3 will provide crypto facilities for Navy traffic transmitted and received over CTG 7.3 CW common net.
- (4) Operate and maintain all land-based communications facilities required at ENIWETOK ATOLL except:
 - (a) Task Group 7.4 internal communications.
 - (b) Task Group 7.3 internal communications.
 - (c) Telephone plant on islands other than ENIWETOK.
 - (d) Inter-island and buoy cable systems.
 - (e) Special facilities required by TG 7.1 and TG 7.5.
 - (f) Inter-Atoll radio facilities of TG 7.1.
- (5) Operate and maintain backup facilities for:
 - (a) The ENIWETOK-PARRY submarine cable circuits.
 - (b) The ENINMAN-ENYU submarine cable keying circuits.
 - (c) Buoy cable circuits at ENIWETOK and BIKINI.
 - (d) On-line SIGTOT-SAMSON facilities at relay center, ENIWETOK and communications centers at PARRY ISLAND and BIKINI ATOLL using standard teletypewriter equipment.
- (6) Operate and maintain ENYU terminal facilities for the USS ESTES - FIRING PARTY VHF ciphony link. Be prepared to move, upon order of CJTF SEVEN, equipment and operations to PARRY ISLAND.
- (7) Operate and maintain HF radio terminal facilities at ENYU for use on the ENIWETOK-BIKINI RATT duplex circuit.
- (8) Operate and maintain theater facilities at ENIWETOK ISLAND and maintain motion picture projection facilities at PARRY ISLAND and BIKINI ATOLL.
- (9) Operate a crystal grinding facility for emergency production of crystals for all elements of the Task Force.
- (10) Furnish emergency power for communications facilities provided by TG 7.2, to include the joint transmitter building.
- (11) Operate and maintain emergency charging plant for the maintenance of storage batteries.
- (12) Provide maintenance for Special Service radio broadcasting station WXLE and Special Service radio receivers.
- (13) Provide personnel and equipment to operate and maintain Headquarters, JTF SEVEN teleconferencing facilities on PARRY ISLAND.

BEST AVAILABLE COPY

~~SECRET~~

Annex E to CTG 7.2 Operation Plan No. 3-53 (Cont'd)

(14) Provide a send circuit from Headquarters, JTF SEVEN Communications Center (PARRY ISLAND) to central receiving point in Building 208-209, PARRY ISLAND, for delivery of teletype traffic for TG 7.1 and TG 7.5.

(15) Submit telephone directory and subsequent changes there to in accordance with JTF SEVEN COI Item No. 40-1.

(16) Maintain a transmission security training program for all users of voice radio facilities and a message drafter improvement program to insure most efficient use of limited operational communications facilities.

(17) Provide such other electronic facilities, the operation and maintenance of which, are within the capabilities of personnel and equipment available.

(18) Establish communication systems prescribed in Natural Disaster Defense Plan No. 2-53 and Annex G, this plan.

b. Military Police Detachment 7126 AU:

Operate MP radio communication net in accordance with SOI this HQ.

c. Port Detachment 7126 AU:

Operate the off-loading radio communication net in accordance with SOI this HQ.

d. POL Section:

Operate communication facilities for off-loading of ships containing POL materials in accordance with SOI this HQ.

x. (1) Radio silence may be imposed as required for accomplishment of the mission.

(2) Voice radio transmission will be strictly controlled and monitored. ACP 122 (B) on security and ACP 125 (A) on radio telephone procedure will apply.

(3) CTG 7.2 and the Adjutant, TG 7.2, only, are authorized to release official messages from this Headquarters.

4. SUPPLY AND MAINTENANCE:

a. CTG 7.2 Administrative Order No. 2-53.

b. Requisitions for all signal supplies will be submitted to CTG 7.2 thru S5 (Sig).

c. The provisions of SR 750-405-10 "Maintenance of Supplies and Equipment-Maintenance, Inspections and Reports-Signal Equipment" apply.

5. COMMAND:

S5 (Sig) will be located at CP, CTG 7.2, during the operational period.

BEST AVAILABLE COPY

OFFICIAL:

Myron H. Dakin
MYRON H. DAKIN
Major: SigC
S5

EDWARD H. LAHTI
Colonel, Infantry
Commander

Appendix: Standing Signal Instructions, Combat Company.

~~SECRET~~

~~CONFIDENTIAL~~

Headquarters Task Group 7.2
Joint Task Force SEVEN
APO 187 c/o Postmaster
San Francisco, California
22 December 1953

Appendix I to Annex E to CTG 7.2, Operation Plan No. 3-53

STANDING SIGNAL INSTRUCTIONS
COMBAT COMPANY

1. GENERAL

Radio circuits and frequencies authorized for use of the Combat Company are listed below. Circuits and frequencies other than those listed will not be used without prior approval of CTG 7.2.

2. RADIO CIRCUIT ASSIGNMENT

<u>Circuit No.</u>	<u>Circuit Description and Application</u>
K-1	a. CTG 7.2 Combat Command Net to CO of Combat Company and to CO of Air Element. b. Maximum Range: 10-15 miles. c. Call Signs: CTG 7.2 Fanbelt Six (AN/VRC-18) TG 7.2 Staff S1 Fanbelt One S2 Fanbelt Two S3 Fanbelt Three S4 Fanbelt Four Commanding Officer Air Element Pullman (AN/PRC-10) Combat Company Comdr. Silkhat (AN/VRC-18) d. Frequency: 43 Mc
K-2	a. Combat Company Command Net. (AN/PRC-10 and AN/VRC-18) b. Maximum Range: AN/PRC-10: 3-5 miles. c. Call Signs: Silkhat Combat Company Comdr. Silkhat Six Rifle Platoon #1 Silkhat One Rifle Platoon #2 Silkhat Two Rifle Platoon #3 Silkhat Three Weapon Platoon Silkhat Four d. Frequency: 44 Mc
K-3	a. CTG 7.2 - Provost Marshal - Military Patrol Nets (AN/VRC-18) b. Maximum Range: 10-15 miles

BEST AVAILABLE COPY

E-I-1

~~CONFIDENTIAL~~

~~CONFIDENTIAL~~

Appendix I to Annex E to CTG 7.2, Operation Plan No. 3-53 (Cont'd)
Cont'd.

Circuit No.

K-3 (Cont'd)

Circuit Description and Application

- c. Call Signs:
CTG 7.2 Fanbelt Six
TG 7.2 Staff:
S1 Fanbelt One
S2 Fanbelt Two
S3 Fanbelt Three
S4 Fanbelt Four
Provost Marshal Trickery One
Patrol Cars Outcast One through Six
- d. Frequency: 45 Mc

OFFICIAL:

EDWARD H. LAHTI
Colonel, Infantry
Commander

Myron H. Dakin
MYRON H. DAKIN
Major SigC
S5

BEST AVAILABLE COPY

E-I-2

~~CONFIDENTIAL~~

~~CONFIDENTIAL~~

Headquarters Task Group 7.2
Joint Task Force SEVEN
APO 187 c/o Postmaster
San Francisco, California
22 December 1953

Annex F to CTG 7.2, Operation Plan No. 3-53

RADIOLOGICAL SAFETY

1. GENERAL:

The detonation of any nuclear device in the vicinity of ENIWETOK ATOLL could result in the radiological contamination of ENIWETOK ISLAND through "fall out". Radiological safety activities will be performed through normal command channels.

2. MISSION:

CTG 7.2 has been assigned the following missions by CJTF SEVEN Operation Order 3-53:

- a. Establish a radiological safety organization within the Task Group capable of performing all ground monitoring services associated with ENIWETOK ISLAND except in those areas assigned to other Task Groups.
- b. Provide fifty (50) "G" cleared radiological safety monitors for emergency monitor support of TG 7.1 if required.
- c. Conduct radiological safety orientation of all Task Group personnel.
- d. Provide ten (10) decontamination personnel for emergency decontamination support of TG 7.1 if required.
- e. Provide Radiac equipment for Task Group requirements including repair, spare parts and calibration facilities.
- f. Provide protective clothing for monitors and decontamination personnel.
- g. Provide contaminated equipment storage area with necessary security.

3. MISSIONS FOR SUBORDINATE UNITS AND ACTIVITIES:

a. Units and activities will appoint a unit Rad-Safe Officer and Rad-Safe NCOs as indicated in Inclosure I. Unit commanders and responsible sections will submit a roster to CTG 7.2, ATTN: Rad-Safe Officer, to include the following:

- (1) Name, rank and serial number.
- (2) Type of clearance.
- (3) Whether or not individual is school trained.
- (4) Date of rotation.

BEST AVAILABLE COPY

The Task Group Rad-Safe Officer will be notified when any changes are made in the assignment of Rad-Safe personnel.

b. The Task Group Rad-Safe Officer TG 7.2, will institute and supervise a program for the continuous training of Rad-Safe monitors and decontamination personnel and for the orientation of all Task Group personnel in radiological safety as directed in paragraph 2a, b, c, and d above.

c. Depot Supply Officer, TG 7.2, will maintain a supply of Class "X" clothing to be used as protective clothing by the Rad-Safe

~~CONFIDENTIAL~~

Annex F to CTG 7.2, Operation Plan No. 3-53 (Cont'd)

monitors and decontamination personnel, to be issued on call by the Task Group Rad-Safe Officer. The clothing to be maintained in stock is as follows:

- Trousers, fatigues - - - - - 50 ea
- Jacket, fatigues - - - - - 50 ea
- Cap, field - - - - - 50 ea
- Gloves, work, leather - - - - - 50 pr
- Respirator, dust - - - - - 30 ea
- Shoes, service, tariff sizes - - - - - 50 pr

d. The Task Group Signal Maintenance Officer will maintain all Radiac equipment.

e. The Task Group Laundry Officer will operate three (3) mobile laundry units for use in clothing decontamination and for the drainage of those units into the lagoon.

OFFICIAL:

EDWARD H. LAHTI
Colonel, Infantry
Commander

Angelo Grillis
ANGELO GRILLIS
Capt Inf
Rad-Safe Officer

Appendix:

- I. Radiological Safety Organization
- II. Radiological Safety Regulations

BEST AVAILABLE COPY

~~CONFIDENTIAL~~

Appendix I to Annex F to CTG 7.2, Operation Plan No. 3-53

RADIOLOGICAL SAFETY REGULATIONS

1. GENERAL:

a. Radiological Defense (Rad-Defense) operations or Radiological Safety (Rad-Safe) operations, short term Rad-Ops, are general terms. They are used to denote the means by which a unit can control and confine the damage and radiological effects of an atomic explosion or of radioactive material spread by other means, thereby preventing and avoiding health hazards to personnel. They are interpreted to include measures such as training, organization, distribution of radiological personnel, development of techniques and procedures, use of detecting equipment, protection or removal of exposed personnel and decontamination of personnel structures and equipment.

b. Following each detonation there will be areas of surface radiological contamination and areas of air radiological contamination. These areas are designated as Radiological Exclusion Areas (RADEX). Prior to shot times, the forecast air and surface RADEX will be disseminated by CJTF SEVEN through CTG 7.2 in the target area. These RADEXES will represent a forecast from H-Hour until dissemination of a later surface and air RADEX at about H plus 4 hours. Since the air RADEX after shot times will be based on monitored tracking by aircraft over significant large ocean areas, information promulgated from the forecast air RADEX may have to be extended beyond the originally anticipated 4 hour period.

c. The surface RADEX will be determined by actual survey with radiation, detection, indication and computation (RADIAC) equipment after shot time.

2. The Maximum Permissible Exposures (MPEs) and Maximum Permissible Limits (MPLs) as stated herein are applicable to a field experimental test of nuclear devices in peacetime wherein numbers of personnel employed in these tests have been previously exposed or will be continuously exposed to potential radiation hazards. It may become necessary from a study of personnel records to reduce the MPE for certain individuals who have recently been over-exposed to radiation. Further, the MPEs and MPLs are subject to revision by waiver from the Task Force Commander in individually designated cases where circumstances indicate the need and justification therefor.

3. Due to the special nature of field tests it is considered that a policy of strict adherence to the radiological standards prescribed for routine work is not realistic. The regulations set forth herein have been designed as a reasonable and safe compromise considering conservation of personnel exposures, the international import of the test and the cost aspects of operational delays, chargeable to excessive radiological precautions. In all cases other than emergencies or tactical situations the ultimate criteria will be limited by the MPEs for personnel.

4. Task Force radiation dosage control will start on first shot minus fifteen (15) days and terminate upon departure of individuals from the forward area or the last shot plus fifteen (15) days. Prior and subsequent to this period, radiation dosage control will be as prescribed by CTG 7.5.

5. a. The MPE for personnel involved in this operation, as defined in paragraph 4, above, is 3.9 roentgens (gamma only). This exposure may be acquired at any time during a thirteen (13) week period of the operation. Provided no previous over-exposure remains for compensation, 3.9 roentgens may be acquired without regard to the individual's past radiation history. This MPE will be considered further augmented (without separate action) by 0.3 roentgens per week for each week in excess of thirteen (13) weeks required during the operational period defined by paragraph 4, above.

b. All exposure to external gamma radiation will be regarded as total body radiation.

F-I-1 BEST AVAILABLE COPY

~~CONFIDENTIAL~~

~~CONFIDENTIAL~~

Appendix I to Annex F to CTG 7.2, Operation Plan No. 3-53 (Cont'd)

6. These individuals exposed to ionizing radiation in excess of the value computed by paragraph 5a, above, will be informed that appropriate remarks will be included in their medical records. Personnel in this category will be advised that they should not be exposed to further radiation until sufficient time has elapsed in order to bring their average radiation dose down to 0.3 roentgens per week.

7. All atoll land and lagoon areas in or near a detonation area will be considered contaminated until cleared by the Task Force Commander. Entry to and exit from contaminated areas will be via Rad-Safe check points only.

8. Contaminated land and water areas will be designated as such. Personnel entering these areas will be subject to clearances by the Rad-Safe Officer TG 7.1 through Rad-Safe Officer TG 7.2, and will normally be accompanied by a Rad-Safe monitor.

9. Contaminated land areas of intensities less than 10 mr/hr (gamma only) will be considered unrestricted from Rad-Safe stand-points. Areas coming within this limitation will be specifically designated by the Task Force Commander.

10. Rad-Safe monitors assigned to individuals or groups working in contaminated areas or with contaminated equipment during recovery operations will act in an advisory capacity to keep the recovery party leader informed of radiation intensities at all times. The Rad-Safe monitor will limit activities to monitoring and will not engage in actual recovery operations.

11. Film badges, dosimeters and protective clothing (fatigues, boots, caps, gloves, dust respirators, etc.) as deemed necessary will be issued to personnel entering contaminated areas by the Task Group Rad-Safe section. All personnel dosage film badges will be procured from and returned to the laboratory of TU 7, TG 7.1, where all processing and recording will be accomplished.

12. All personnel within viewing distance of an atomic detonation who are not supplied with protective goggles will turn away from the detonation point and close their eyes during the time of burst. At least 10 seconds should be allowed before looking directly at the burst.

13. All vehicles and boats used in contaminated areas will be checked through the Task Group Rad-Safe Section upon return from such areas.

14. The MPLs listed herein will be used under normal conditions. All readings of surface contamination are to be made with Geiger Counters, with shields open unless otherwise specified. The surface of the probe should be held one (1) to two (2) inches from the surface under observation.

a. Personnel and Clothing MPLs:

(1) Skin readings should not be more than 1.0 mr/hr. Complete decontamination by bathing will be utilized for readings in excess of this level. If the body is generally contaminated and especially if contamination is on the eyes or gonads, special efforts should be made to reduce the contamination level. Do not, however, abrade the skin or epilate the scalp in an attempt to reduce stubborn contamination below 1 mr/hr.

(2) Underclothing and body equipment such as internal surfaces of respirators should be reduced to 2 mr/hr.

(3) Outer clothing will be no greater than 7 mr/hr.

b. Vehicle MPLs:

BEST AVAILABLE COPY

The interior surfaces of occupied sections of vehicles will be no greater than 7 mr/hr. The outside surfaces of vehicles will be less

F-I-2

~~CONFIDENTIAL~~

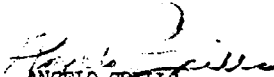
~~CONFIDENTIAL~~

Appendix I to Annex F to CTG 7.2, Operation Plan No. 3-53 (Cont'd)

than 7 μ r/hr (gamma only) at five (5) or six (6) inches from the surface.

OFFICIAL:

EDWARD H. LAHTI
Colonel, Infantry
Commander


ANGELO GRILLS
Capt Inf
Rad-Safe Officer

BEST AVAILABLE COPY

F-1-3

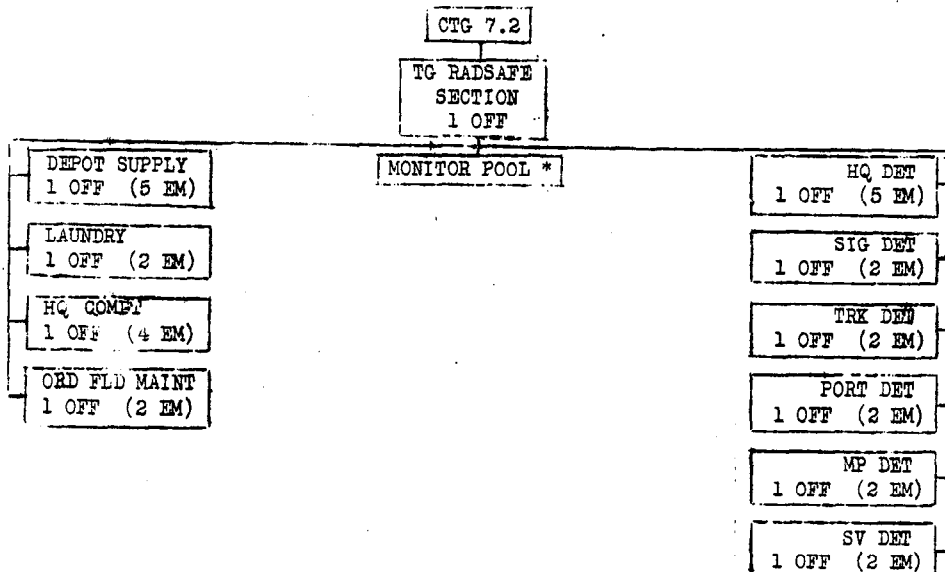
~~CONFIDENTIAL~~

~~CONFIDENTIAL~~

Headquarters Task Group 7.2
Joint Task Force SEVEN
APO 187, c/o PM, San Francisco, Calif.
22 December 1953

Appendix II to Annex F to CTG 7.2 Operation Plan 3-53

TASK GROUP 7.2 RADSAFE ORGANIZATION



NOTE: Solid line indicates technical supervision of Radsafe preparedness and training and operational control in the event of radiological contamination emergency.

* Upon completion of training, personnel from monitor pool will be given emergency assignments by name in numbers indicated in Radsafe Organization Structure. Remaining trained personnel will constitute emergency reserve to be committed at the direction of CTG 7.2.

OFFICIAL:

EDWARD H LAETI
Colonel, Infantry
Commander

Angelo Grills
ANGELO GRILLS
Capt, Inf
Radsafe Officer

BEST AVAILABLE COPY

F-II-1
~~CONFIDENTIAL~~

~~CONFIDENTIAL~~

Headquarters Task Group 7.2
Joint Task Force SEVEN
APO 187 c/o Postmaster
San Francisco, California
18 February 1954

Appendix III to Annex F to CTG 7.2 Operation Order 3-53

RADIOLOGICAL SAFETY IN "FALL-OUT" PERIOD

1. GENERAL:

There exists the possibility of radiological "fall-out" on ENIWETOK ISLAND during the operational period. In order to insure that this command takes the maximum advantage of protective measures, the radiological defense organization will function as delineated herein.

2. MISSION:

The following missions, assigned to CTG 7.2 by CJTF SEVEN Operation Order No 3-53 apply:

- a. Perform all ground monitoring services associated with ENIWETOK ISLAND except in those areas or activities assigned to other task groups.
- b. Provide own radiac equipment and protective clothing.
- c. Provide own repair, spare parts and calibration facilities for radiac equipment.
- d. Provide contaminated clothing laundry facilities for TG 7.4.

3. MISSIONS FOR SUBORDINATE UNITS AND ACTIVITIES:

a. The Task Group Radsafe Officer will maintain a continuous reading monitoring instrument at S3 Section, Task Group 7.2. This equipment will show radiation level at Headquarters, Task Group 7.2 and will be used to make decisions as to the radiological safety of the Task Group.

b. Unit Commanders, using their own radsafe sections and such "backup" monitors as their unit may have available (see letter; this headquarters, "Radiological Safety Backup Monitors", 4 Feb 54), will keep in operation one Radiac AN/PER 37 A. This instrument will remain in operation 0600-2200 hours daily in each unit orderly room, except once each hour, a monitor will make a sweep through the unit area with the instrument. This monitoring will begin at H-hour and end when unit is notified by Radsafe Officer, Task Group 7.2 that the danger from "fall-out" no longer exists. Areas where contamination is such that personnel would receive a total weekly dosage above the established maximum of 300 milliroentgens/week (mr/wk) will be reported to Radsafe Officer, Task Group 7.2 and marked off. Markers may be drawn from Radsafe Officer, Task Group 7.2 as needed. Areas marked in this manner are known as Radiological Exclusion Areas and will not be entered except under supervision of Radsafe Officer, Task Group 7.2.

c. Unit Radsafe Officers will be issued film badges the day before each shot (H-1 day). These film badges will be spotted about the unit area in accordance with the directions of Radsafe Officer, Task Group 7.2. Each Radsafe NCO will wear a film badge and carry a pocket dosimeter from H-1 day until directed to turn them in. Film badges will be turned in with the following information:

- (1) Number of Badge. **BEST AVAILABLE COPY**
- (2) Time during which badge was exposed.

F-III-1

~~CONFIDENTIAL~~

Appendix III to Annex F to CTG 7.2 Operation Order No. 3-53 (Cont'd)

(3) (a) If in an area, location of area.

(b) If worn by personnel:

1. Full name.
2. Rank.
3. Serial number.
4. Home station (if on TDY).
5. Reading of pocket dosimeter for this period.

d. The Signal Officer will give high priority to the repair and maintenance of RADIAC instruments during this period.

e. The Laundry Officer will operate contaminated clothing laundry facilities for TG 7.4 and TG 7.2.

f. During this period, the Provost Marshal will insure that one monitor accompanies each ground security sweep.

x. (1) A personnel decontamination center will be located in Building 125. This facility is controlled and operated by the Padsafe Officer, Task Group 7.4 during operational periods. All individuals subject to contamination will be monitored by unit monitors to determine whether it is necessary for them to be processed at the personnel decontamination center. If skin readings are more than 1.0 mr/hr, decontamination is necessary.

(2) If the radiation should reach a level not sufficient to warrant evacuation, but sufficient to cause the personnel on ENIVETOK ISLAND to exceed daily tolerance, it will be necessary to move all personnel indoors. Upon order of CTG 7.2, all personnel will move into buildings or tents. Windows will be closed in buildings and flaps closed in tents. If this occurs during an individual's working hours, he will continue to work if he is indoors. Unit Commanders will prepare building assignments assigning each individual to a building. Each individual will be given an off-duty and an on-duty building assignment. If it becomes necessary to move indoors, each individual will proceed to his assigned building and remain there. All outdoor activities will be cancelled during this period. Personnel may leave assigned buildings only if it is necessary to go to the nearest latrine and will remain exposed for as short a time as possible enroute to latrines. During meal times, the command may go to the mess hall if permission is granted by CTG 7.2. If this permission is not granted, emergency rations will be issued. All personnel assigned to tents or buildings having no water supply will fill their canteens the evening of H-1 day.

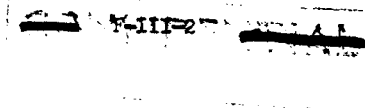
(3) If "fall-out" becomes extremely large, ENIVETOK ISLAND will be evacuated. The provisions of Annex H will then apply.

OFFICIAL:

EDWARD H. LAMTI
Colonel, Infantry
Commander

Ant. Mallory
BARTON J. MALLORY
Major Arty
53

BEST AVAILABLE COPY



~~SECRET~~

Headquarters Task Group 7.2
Joint Task Force SEVEN
APO 187 c/o Postmaster
San Francisco, California
22 December 1953

Annex G to CTG 7.2, Operation Plan No. 3-53

HOSTILE ACTION ALERT PLAN

Definitions: The following alert conditions are for use by the Task Force.

WHITE Alert, as employed in this plan, indicates that hostile action or attack on forward area installations is imminent or will occur within a period of time specified by CJTF SEVEN.

RED Alert, indicates that any one or all of the forward area positions are being subjected to hostile reconnaissance or attack.

1. GENERAL CONCEPT:

Upon arrival of the Task Force Headquarters in the forward area Commander Joint Task Force SEVEN (CJTF SEVEN) assumes responsibility to CINCPAC for security of the ENIWETOK-BIKINI area as ATCOM ENIWETOK.

In the event of an outbreak of general war during the on-site operational phase, the Task Force will continue toward the execution of its mission within the capability of the forces remaining available unless instructions to the contrary are received from the AEC and DOD. The premise upon which this plan is based is that any actual attack by an enemy would, in all probability, occur when the entire Task Force has been established in the forward area. Short of such an actual attack, hostile action would in all likelihood be limited to missions of reconnaissance nature.

The Task Group will be placed on WHITE and RED alerts in accordance with instructions from CJTF SEVEN. When on WHITE alert status, all unit commanders will prepare for RED alert conditions to the maximum extent possible in view of their primary tasks and missions.

ENIWETOK ATOLL: This plan is based on the premise that a minimum of outposts and stations will be manned upon assumption of overt action by enemy forces. The bulk of the units of this command will form in their unit areas, under arms, to be employed as required to counter the enemy action when the place, direction, and scheme of maneuver of the enemy has been determined. No attempt will be made to defend the entire beach line nor concentrate forces at any single point until enemy intentions are known. One unit, a composite combat company, is organized as a combat ready unit capable of rapid employment as a mobile striking force. This unit will be capable of rapid employment as a mobile unit not only on ENIWETOK Island but to other islands of ENIWETOK Atoll by surface vessel as well as to BIKINI Atoll by air and/or surface transportation. TG 7.2 has the capability of air dropping a small parachute element on most islands of the atoll to counter any small enemy lodgement that may be effected as well as on BIKINI Atoll.

This plan requires that the observation post (OP) atop the water tank tower on ENIWETOK be manned on a 24 hour basis to keep the area surrounding ENIWETOK Island under constant observation. Also, daily flights of liaison planes, helicopters, and other aircraft have the mission of reporting unusual sightings. **BEST AVAILABLE COPY**

A series of secondary observation posts are established upon sounding of the alert. Reports from the primary and secondary OPs, as well as observations from aircraft requested to be launched for this specific purpose, will furnish CTG 7.2 with information he requires for the proper employment of his forces on ENIWETOK Atoll at the critical points.

G-1

~~SECRET~~

~~SECRET~~

Annex G to CTG 7.2, Operation Plan No. 3-53 (Cont'd)

BIKINI Atoll: The premise upon which the defense of BIKINI Atoll is based is that because of the relatively small military force stationed there, it is not feasible to attempt to defend on the ground all the military and AEC facilities located on BIKINI Atoll without support from elements of the Task Group located at ENIWETOK. The movement of supporting elements from ENIWETOK will be accomplished by air/or surface transport upon order of CJTF SEVEN. Until the arrival of supporting elements at BIKINI the security of the BIKINI air strip and of the LST loading area is vital.

Areas to be defended, in order of priority, are as follows:

- I BIKINI airstrip and critical AEC facilities.
- II LST landing area.
- III Army Signal Det Communications Center.

a. Enemy Forces:

(1) Enemy forces in the event of general hostilities will be those of the Soviet Union and its eastern European and Asiatic satellites.

(2) Indigenous communist groups in anti-Soviet and neutral countries will support the Soviet bloc.

(3) The USSR and its satellites have given no indication of relaxing their drive toward world domination and are maintaining an advanced state of preparedness for war. The Soviet Union will probably not initiate overt warfare so long as other means are successful or unless it seems evident that the U.S. and its allies are becoming so strong as to prevent the further spread of Communism. For additional details see Annex C.

b. Friendly Forces:

(1) TG 7.3 supports TG 7.2 with naval surface transport, naval gunfire, close air support and personnel augmentations for TG 7.2 combat security force (TG 7.2 Combat Company).

(2) TG 7.4 supports TG 7.2 with air transport for TG 7.2 combat security force from ENIWETOK Atoll to BIKINI Atoll on order of CJTF SEVEN, air reconnaissance, aerial resupply and evacuation, and personnel augmentation for TG 7.2 combat security force.

(3) TG 7.1 supports TG 7.2 with military personnel augmentation for TG 7.2 combat security force.

(4) TG 7.5 supports TG 7.2 in preparation for defense and emergency loading of vessels.

2. MISSIONS: In the event of a WHITE alert TG 7.2 will:

a. Make necessary adjustment of atoll security forces to provide maximum physical defense of the ENIWETOK-BIKINI ATOLLS against overt acts and landing parties commensurate with the means and latest information available.

b. Be prepared to move ground defense units either by water or air transportation to the scene of any enemy threat within the danger area.

c. Prepare and improve appropriate field fortifications in the area or island considered to be most susceptible to attack.

d. Conduct final coordination with ATCOM ENIWETOK and other Task Group commanders as required for implementation of these defense measures.

BEST AVAILABLE COPY

~~SECRET~~

~~SECRET~~

Annex G to CTG 7.2, Operation Plan No. 3-53 (Cont'd)

e. Prepare for the evacuation or destruction of classified documents as specified in Security Memorandum No. 6, Hqs, JTF SEVEN, dtd 13 September 1953.

f. Be prepared to assist CTG 7.1 in the immediate removal or destruction of atomic weapons components and critical test equipment.

In the event of a RED alert TG 7.2 will:

a. Initiate the appropriate tactical disposition of his defense forces, disperse threatened critical classes of supply and physically occupy previously constructed fortifications for the defense of any critical threatened island.

b. Defend ENIWETOK Atoll, particularly ENIWETOK, PARRY and shot islands, from hostile attack with combat security force and, on order of ATCOM ENIWETOK, move to BIKLINE ATOLL by vessel and/or aircraft in event that atoll is threatened.

c. Assist CTG 7.1 in the immediate removal or destruction of atomic weapon components and critical test equipment in threatened areas.

d. Resist and counter-attack enemy forces until the threat is resolved or until orders are issued by ATCOM ENIWETOK to the contrary.

3. TASKS FOR SUBORDINATE UNITS - WHITE AND RED ALERTS:

a. Hq Det, 7126 AU

Atch; Svc Det, 7126 AU (-)

(1) Establish, occupy and defend CP of CTG 7.2 (Bldg #15 and vicinity), constitute a reserve force and be prepared to be employed upon order of CTG 7.2.

(2) Protect assembly of Combat Company on Pershing Field.

b. Svc Det, 7126 AU

(1) Organize, equip and assemble the Company Headquarters, and the 1st Rifle Platoon of the Combat Company (appendix II). Dispatch these elements upon assumption of alert, to Combat Company assembly area at Pershing Field to pass to control of CO, Combat Company upon arrival.

(2) Svc Det (-) atch to Hq Det, 7126

c. Sig Det, 7126 AU

(1) Maintain existing atoll communications and command circuits to higher headquarters. See Annex E.

(2) Occupy and defend the radio receiver and transmitter stations and the communications center (Bldg #15) insuring security of cryptographic equipment.

d. Trk Det, 7126 AU

BEST AVAILABLE COPY

(1) Organize, equip, and assemble the 2nd Rifle Platoon of the Combat Company (appendix II). Dispatch this element upon assumption of alert to Combat Company assembly area at Pershing Field to pass to control of CO, Combat Company upon arrival.

(2) Dispatch five (5) 1/4 ton trucks, one (1) 3/4 ton and one (1) 2 1/2 ton truck to Pershing Field to report to CO, Combat Company.

(3) Dispatch two (2) 3/4 ton trucks to report to CO MP Detachment, for transport of weapons of Weapons Platoon, Combat Company.

G-3

~~SECRET~~

~~SECRET~~

Annex G to CTG 7.2 Operation Plan No. 3-53 (Cont'd)

(4) Personnel not employed in above missions will form in motor pool area for additional transportation missions or for employment as directed by CTG 7.2.

e. Port Det. 7126 AU

(1) Organize, equip and assemble the 3rd Rifle Platoon of the Combat Company (appendix II). Dispatch this element upon assumption of alert to Combat Company assembly area at Pershing Field to pass to control of CO, Combat Company upon arrival.

(2) Remainder of Detachment will assemble in unit area for employment as directed by CTG 7.2.

f. MP Det, 7126 AU

(1) Continue to man primary OP on 24 hour basis (OP#1).

(2) Man Secondary OP's immediately upon sounding of alert.

(a) On top of Bldg #1, (OP#2).

(b) Navy Tower (OP#3).

(c) Air Base Control Tower (OP#4).

(d) On top of Butts, May Range (OP#5).

(3) Organize, equip and assemble the Weapons Platoon of the Combat Company (appendix II). Dispatch this element upon assumption of alert to Combat Company assembly area at Pershing Field to pass to control of CO, Combat Company upon arrival.

g. Combat Company

(1) Organize, equip and assemble on Pershing Field.

(2) Prepare to deploy as directed by CTG 7.2.

h. Navy Detachment

(1) Beach all landing craft in vicinity of personnel pier.

(2) Prepare to transport elements of Combat Company to other islands of Eniwetok Atoll as directed by CTG 7.2.

(3) Personnel not required for operation of boats will form in boat pool area for employment as directed.

i. Coast Guard Det

Occupy and defend the LORAN Transmitter Station.

j. TG 7.1 Augmentation

Assemble in unit area for deployment as directed by CTG 7.2.

k. TG 7.3 Augmentation **BEST AVAILABLE COPY**

Assemble in unit area for deployment as directed by CTG 7.2.

l. TG 7.4 Augmentation

Assemble in unit area for deployment as directed by CTG 7.2.

x. TASK COMMON TO ALL UNITS:

G-4

~~SECRET~~

~~SECRET~~

Annex G to CTG 7.2, Operation Plan No. 3-53 (Cont'd)

(1) Upon sounding of the Hostile Action Alert:

(a) All personnel will return immediately to their unit areas to obtain their weapons, ammunition, and field equipment, and then proceed to defense stations or assembly points. Personnel manning observation posts (OPs) will draw field glasses in addition to arms and equipment. See appendix X (map) for location of OPs, and assembly areas and command posts.

(b) Unit commanders will issue a basic load of ammunition and will implement defense plans immediately.

(c) Two messengers will be dispatched from each unit located on Eniwetok Island to the CP, TG 7.2 (Bldg #15) with instructions to report to the TG Sergeant Major.

(d) Be prepared to destroy the following in this order:

I Classified documents.

II Classified equipment.

III Scientific equipment

IV Military and construction equipment.

(2) Air Defense Plan - see appendix VIII.

(3) Control Electronic Emissions and Surface Lighting - see appendix VII.

(4) Essential Elements of Information: Any information concerning the following EEI will be transmitted to the S2, Bldg #15 by the most expeditious means available:

(a) Initial contact or sighting of the enemy or of an unusual occurrence.

(b) Size, composition and mission of attacking force.

(c) Nationality of individuals and unit identity or any element of the attacking force.

(d) Quantity, caliber, location and identification of enemy weapons.

4. ADMINISTRATIVE AND LOGISTICAL MATTERS:

a. Administrative.

Existing administrative procedures will apply.

b. Logistical.

(1) Provisions of current SOPs will apply, except as noted in this plan, until changed by CTG 7.2 to meet the tactical situation.

(2) All requests for supplies will be routed through the S4, TG 7.2 except for Class III. **BEST AVAILABLE COPY**

(3) All casualties will be evacuated to the Hospital (Bldg #24).

(4) Class I (Rations) emergency rations will be issued as directed by S4 through the Mess Officer of the Consolidated Mess.

(5) Class II & IV (Clothing, weapons, misc. equip) - issued as required through normal supply channels.

~~SECRET~~^{G-5}

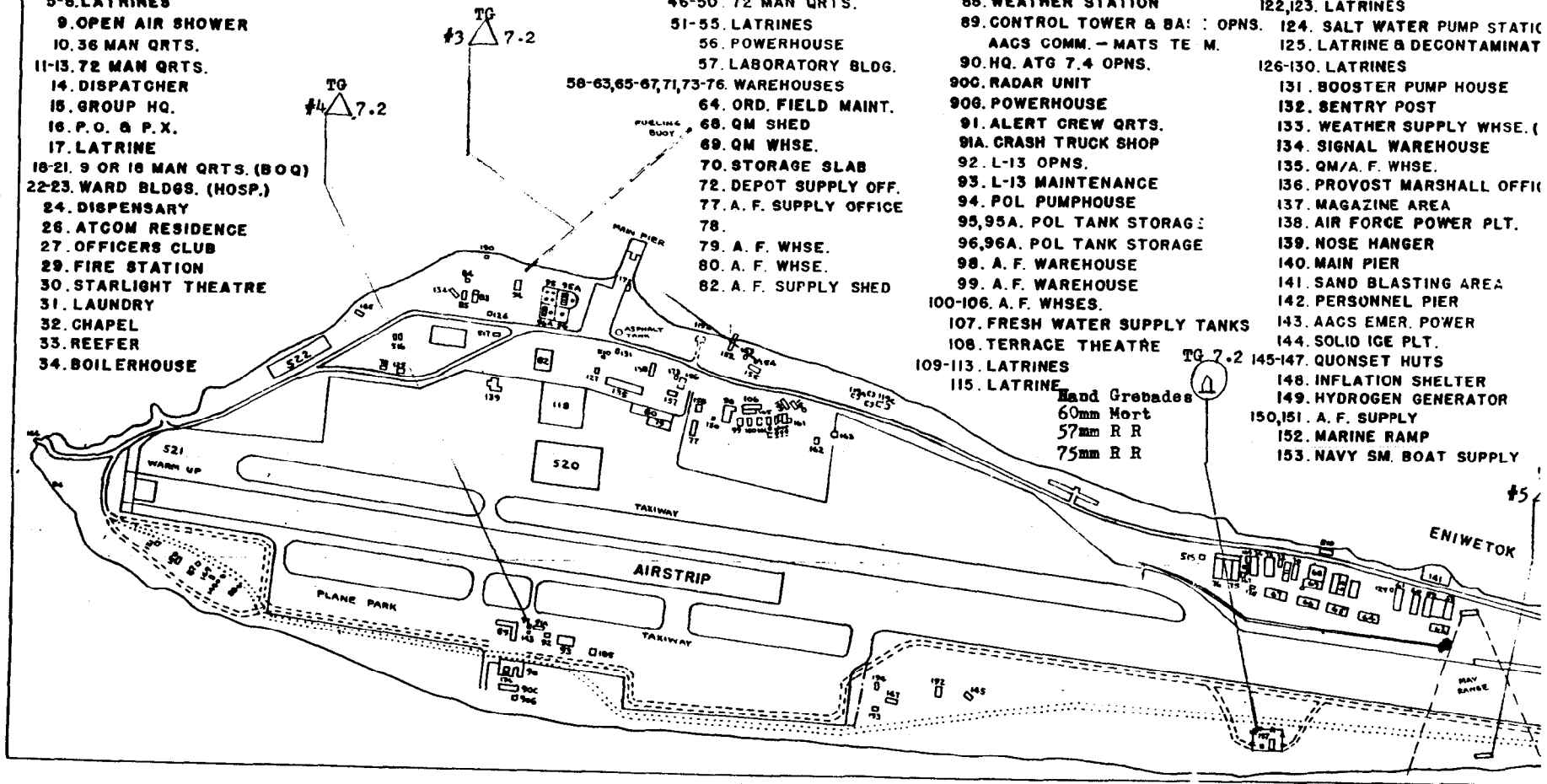
CONFIDENTIAL

1. SERVICE CLUB
2. OFFICERS BEACH CLUB
3. POWER HOUSE (TRANSMITTER)
4. TRANSMITTER
- 4A. ANTENNA TUNER (HOMER)
- 5-8. LATRINES
9. OPEN AIR SHOWER
10. 36 MAN QRTS.
- 11-13. 72 MAN QRTS.
14. DISPATCHER
15. GROUP HQ.
16. P.O. & P.X.
17. LATRINE
- 18-21. 9 OR 18 MAN QRTS. (BOQ)
- 22-23. WARD BLDGS. (HOSP.)
24. DISPENSARY
26. ATCOM RESIDENCE
27. OFFICERS CLUB
29. FIRE STATION
30. STARLIGHT THEATRE
31. LAUNDRY
32. CHAPEL
33. REEFER
34. BOILERHOUSE

35. BAKERY
36. MESS HALL
37. COMMISSARY
- 38-42. 18 MAN QRTS.
- 43-44. LATRINES
- 46-50. 72 MAN QRTS.
- 51-55. LATRINES
56. POWERHOUSE
57. LABORATORY BLDG.
- 58-63,65-67,71,73-76. WAREHOUSES
64. ORD. FIELD MAINT.
68. QM SHED
69. QM WHSE.
70. STORAGE SLAB
72. DEPOT SUPPLY OFF.
77. A. F. SUPPLY OFFICE
- 78.
79. A. F. WHSE.
80. A. F. WHSE.
82. A. F. SUPPLY SHED

83. SIGNAL WAREHOUSE
84. POWERHOUSE (RECEIVER)
85. RECEIVER BLDG.
86. RAMP (REMOVED)
87. POWER GENERATOR
88. WEATHER STATION
89. CONTROL TOWER & BA : OPNS.
- AACS COMM. - MATS TE M.
90. HQ. ATG 7.4 OPNS.
- 90C. RADAR UNIT
- 90C. POWERHOUSE
91. ALERT CREW QRTS.
- 91A. CRASH TRUCK SHOP
92. L-13 OPNS.
93. L-13 MAINTENANCE
94. POL PUMPHOUSE
- 95,95A. POL TANK STORAGE
- 96,96A. POL TANK STORAGE
98. A. F. WAREHOUSE
99. A. F. WAREHOUSE
- 100-106. A. F. WHSES.
107. FRESH WATER SUPPLY TANKS
108. TERRACE THEATRE
- 109-113. LATRINES
115. LATRINE
- Hand Grenades
- 60mm Mort
- 57mm R R
- 75mm R R

116. LORAN BLDG.
- 117A,B,C,D,E,F. DECONTAMINATION ARE
118. MAINTENANCE HANGER
- 119A,B,C,D,E. STABILIZED HARDSTANDS
121. ELEV. WATER STORAGE TA
- 122,123. LATRINES
124. SALT WATER PUMP STATIC
125. LATRINE & DECONTAMINAT
- 126-130. LATRINES
131. BOOSTER PUMP HOUSE
132. SENTRY POST
133. WEATHER SUPPLY WHSE. (
134. SIGNAL WAREHOUSE
135. QM/A. F. WHSE.
136. PROVOST MARSHALL OFFIC
137. MAGAZINE AREA
138. AIR FORCE POWER PLT.
139. NOSE HANGER
140. MAIN PIER
141. SAND BLASTING AREA
142. PERSONNEL PIER
143. AACS EMER. POWER
144. SOLID ICE PLT.
- 145-147. QUONSET HUTS
148. INFLATION SHELTER
149. HYDROGEN GENERATOR
- 150,151. A. F. SUPPLY
152. MARINE RAMP
153. NAVY SM. BOAT SUPPLY



BEST AVAILABLE COPY

~~CONFIDENTIAL~~

ION AREA BLDGS.
 ANGER
 IDSTANDS
 DRAGE TANKS

 IP ATION
 TINATION SHOWER

 OUSE

 WHSE. (DESTROYED)
 SE

 LL OFFICE

 R PLT.

 AREA
 R

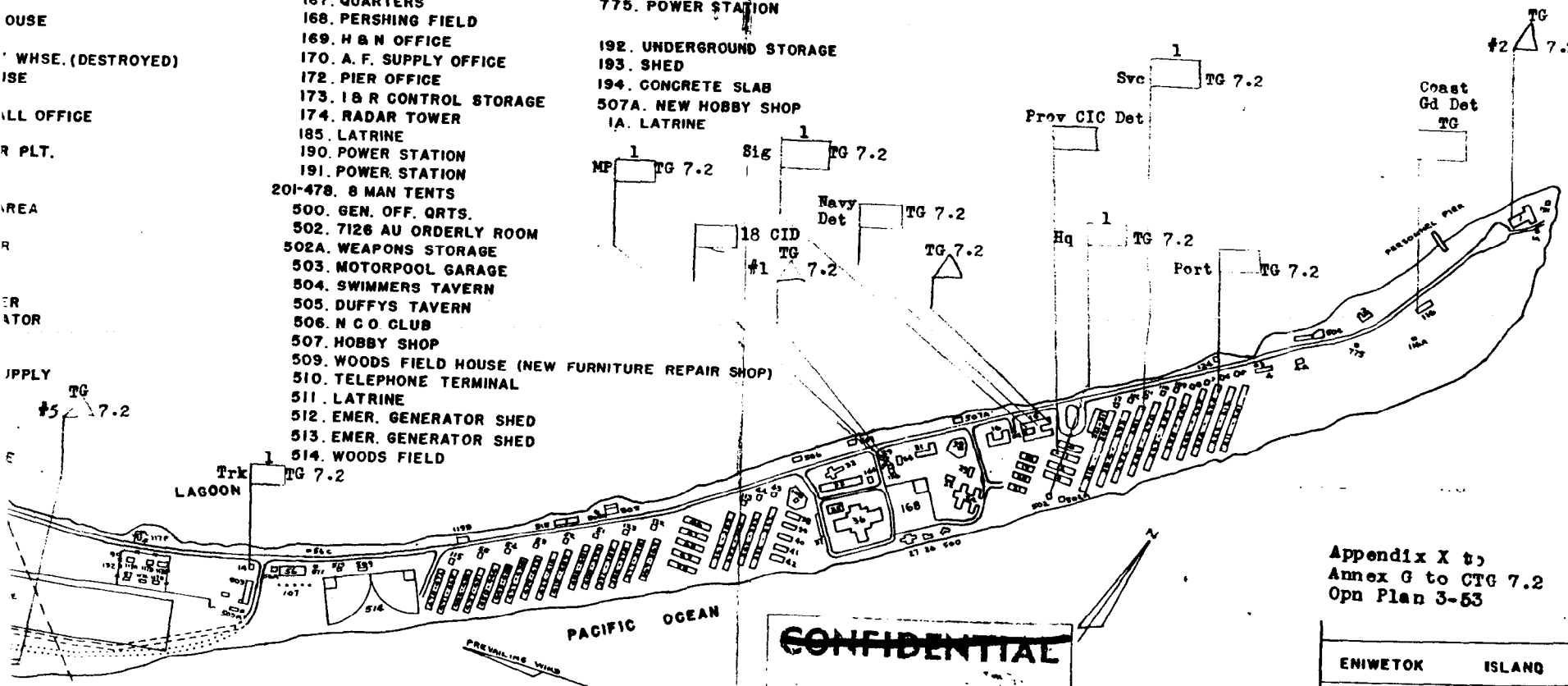
 ER
 TOR

 PPLY

- 154. NAVIGATION TOWER
- 155. NAVY SM. BOAT REPAIR
- 156. OFFICE BUILDING
- 157. A. F. BATTERY SHOP
- 158. WASH RACK
- 159-163. A. F. WAREHOUSES
- 164. GARBAGE RAMP
- 165-166. UNDERGROUND STORAGE
- 167. QUARTERS
- 168. PERSHING FIELD
- 169. H & N OFFICE
- 170. A. F. SUPPLY OFFICE
- 172. PIER OFFICE
- 173. I & R CONTROL STORAGE
- 174. RADAR TOWER
- 185. LATRINE
- 190. POWER STATION
- 191. POWER STATION
- 201-478. 8 MAN TENTS
- 500. GEN. OFF. QRTS.
- 502. 7126 AU ORDERLY ROOM
- 502A. WEAPONS STORAGE
- 503. MOTORPOOL GARAGE
- 504. SWIMMERS TAVERN
- 505. DUFFYS TAVERN
- 506. N CO CLUB
- 507. HOBBY SHOP
- 509. WOODS FIELD HOUSE (NEW FURNITURE REPAIR SHOP)
- 510. TELEPHONE TERMINAL
- 511. LATRINE
- 512. EMER. GENERATOR SHED
- 513. EMER. GENERATOR SHED
- 514. WOODS FIELD

- 515. MORTUARY
- 516. TENT FRAMES
- 517. POL OFFICE
- 518. CONCRETE SLAB
- 519. PAINT SHOP
- 520. JET WARM UP PAD
- 521. WARM UP AREA
- 522. SKEET RANGE
- 775. POWER STATION

- 192. UNDERGROUND STORAGE
- 193. SHED
- 194. CONCRETE SLAB
- 507A. NEW HOBBY SHOP
- IA. LATRINE



Appendix X to
 Annex G to CTG 7.2
 Opn Plan 3-53

~~CONFIDENTIAL~~

ENIWETOK ISLAND	
3 MAR 1953	
DRAWN BY	APPROVED BY

SECRET

Annex G to CTG 7.2 Operation Plan No. 3-53 (Cont'd)

(6) Class V (Ammunition) - each unit will maintain a basic load in the unit area which will be issued immediately upon sounding of the Hostile Action Alert. For resupply see appendix III (Ammunition).

5. COMMAND AND SIGNAL MATTERS:

a. Command Posts (See appendix X (map)).

- (1) CTG 7.2 - Bldg #15, Telephone 3155 or 4106.
- (2) CO, Hq Det - Bldg #502, Telephone 4176.
- (3) CO, Svc Det - Tent #1, Row "H", Telephone 4171.
- (4) CO, Sig Det - Bldg #15, Telephone 3102.
- (5) CO, Combat Co - Tent #1, Row "H", Telephone 4171.
- (6) CO, MP Det - Bldg #136, Telephone 3125.
- (7) CO, Truck Det - Motor Pool Area, Bldg #14, Telephone 3117.
- (8) CO, Port Det - North end of Row "H", Telephone 3146.
- (9) CO, Navy Det - Bldg #15, Telephone 4275.
- (10) CO, Coast Guard Det - Bldg #116, Telephone 4249.

b. Communications (Annex E).

OFFICIAL:

Barton J. Mallory
BARTON J. MALLORY
Major Arty
S3

EDWARD H. LAHTI
Colonel, Infantry
Commander

APPENDICES:

- I - Alert Action - Sequence of Events
- II - Task Organization for Combat
- III - Ammunition
- IV - Beaching Conditions at Eniwetok and Bikini Atolls
- V - Inter-Island Flying Times, Eniwetok and Bikini Atolls
- VI - Average Running Times for Marine Craft, Eniwetok and Bikini Atolls
- VII - Control of Electronic Emissions and Surface Lighting
- VIII - Air Defense
- IX - Atomic, Biological and Chemical (ABC) Defense Plan
- X - Map of Eniwetok Island

G-6

Revised 31 Jan 1954

SECRET

~~CONFIDENTIAL~~

Headquarters Task Group 7.2
Joint Task Force SEVEN
APO 187 o/o Postmaster
San Francisco, California
22 December 1953

Appendix I to Annex G, CTG 7.2 Operation Plan 3-53

ALERT ACTION - SEQUENCE OF EVENTS

1. In the event of hostile action directed against Eniwetok Island the first person detecting the action will immediately notify the Military Police Desk Sergeant by the most expeditious means available. The Desk Sergeant is located in Bldg #21, telephone number ~~22~~ 4/27.
2. If the person giving the alert is other than a properly identified officer of the Garrison Force, the Desk Sergeant will immediately.
 - a. Dispatch a radio equipped motor patrol to the scene.
 - b. Alert the PM and all MP personnel of a potential hostile action alert.
 - c. Upon MP verification take further action as noted in paragraph 3.
3. If the alert notice is furnished by a properly identified officer of Headquarters, Joint Task Force SEVEN or by any officer known by the Desk Sergeant he will immediately:
 - a. Cause a series of three short blasts to be repeated nine (9) times over the post siren system.
 - b. Notify the Duty NCO (Bldg #15, telephone ^{3101 OR 3107} ~~22~~) of the Hostile Action Alert and give him the name, rank and organization of the officer giving the alert or the MP patrol verification of the alert.
4. The Duty NCO at TG Headquarters will immediately notify the Commander (CTG 7.2), Staff Duty Officer, and the Officer of the Day.
5. The Staff Duty Officer, or in his absence the Officer of the Day, will insure that the alert has been flashed to CJTF SEVEN and to every unit on ENIWETOK Island.
6. All units upon hearing the alert signal or announcement will immediately implement their Hostile Alert Plans and upon arrival at their duty stations or assembly areas will report degree of readiness to CTG 7.2.
7. Verification of the alert and assumption of defense measures will be expedited by all elements of the command.
8. The All Clear announcement or termination of the alert will be issued personally or by message by CTG 7.2 only, and recipients will require positive authentication prior to leaving their assigned stations or assembly areas.

BEST AVAILABLE COPY

OFFICIAL:

EDWARD H. LAHTI
Colonel, Infantry
Commander

Barton J. Mallory
BARTON J. MALLORY
Major Arty
S3

G-I-1

~~CONFIDENTIAL~~

~~CONFIDENTIAL~~

Headquarters Task Group 7.2
Joint Task Force SEVEN
APO 187 c/o Postmaster
San Francisco, California
22 December 1953

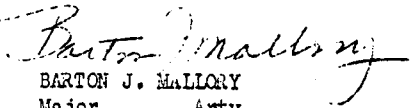
Appendix II to Annex G to CTG 7.2 Operation Plan No. 3-53

TASK ORGANIZATION FOR COMBAT

1. Effective upon receipt of an alert the Task Group enters into a combat organization.
2. Note appendices attached hereto for organization of the Task Group for combat.

OFFICIAL:

EDWARD H. LAHTI
Colonel, Infantry
Commander


BARTON J. MALLORY
Major Arty
S3

INCLOSURES:

1. Task Group - Organization for Combat
2. Combat Company - Organization Chart
3. Combat Company Detailed Organization

BEST AVAILABLE COPY

G-II-1

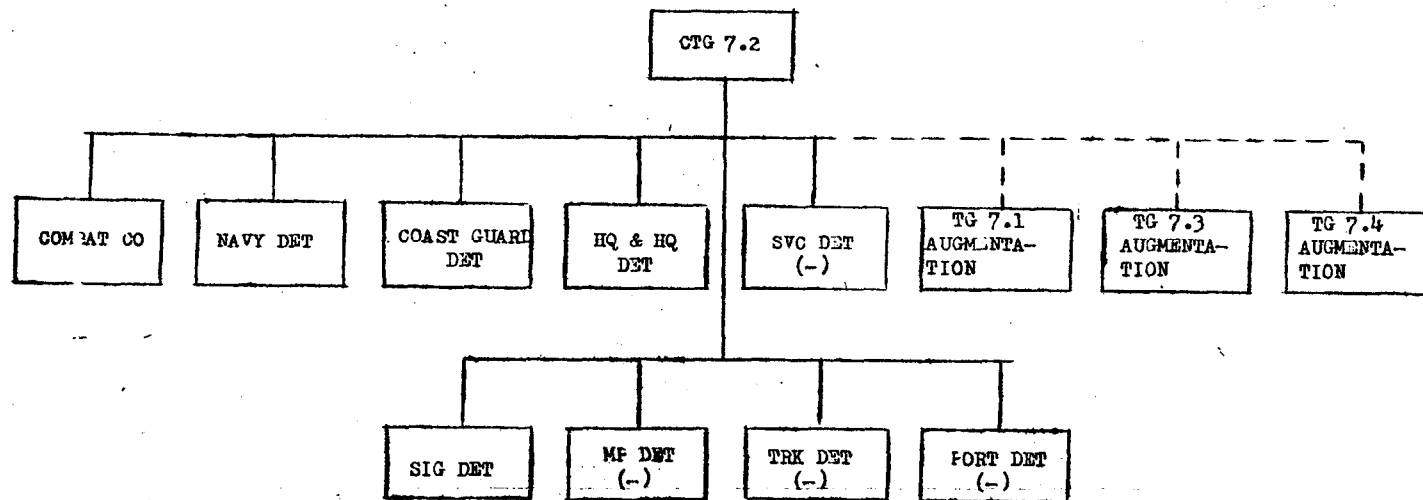
~~CONFIDENTIAL~~

Inlosure 1 to Appendix II to Annex G
CTG 7.2 Operation Plan No. 3-53

Headquarters Task Group 7.2
Joint Task Force SEVEN
APO 187 c/o Postmaster
San Francisco, California
22 December 1953

~~CONFIDENTIAL~~

TASK GROUP 7.2 ORGANIZATION FOR COMBAT



~~CONFIDENTIAL~~

G-II-2

~~CONFIDENTIAL~~

~~CONFIDENTIAL~~

LEGEND:
----- Attached Units

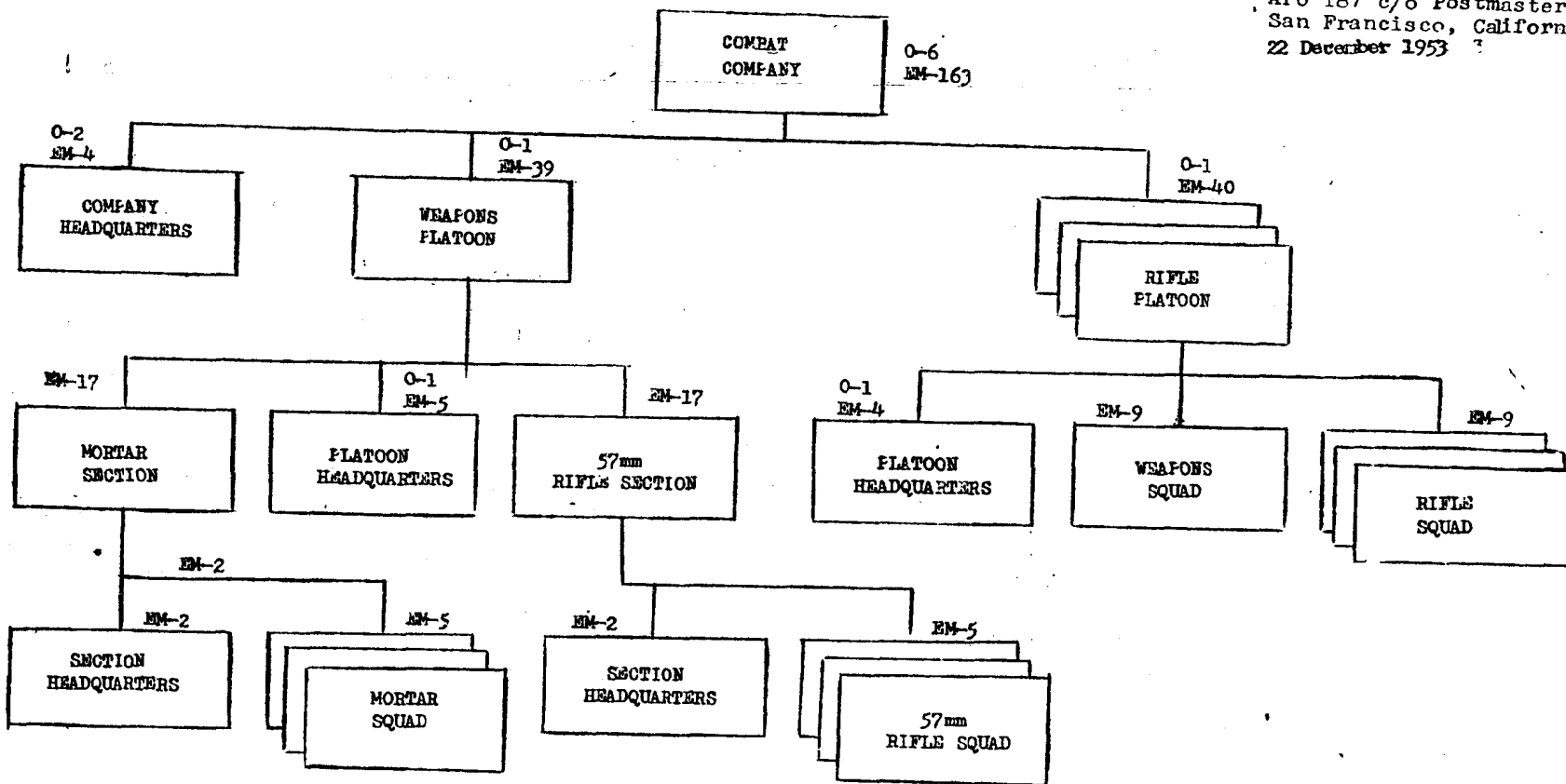
BEST AVAILABLE COPY

BEST AVAILABLE COPY

Incl 2 to Appendix II to Annex G
CTG 7.2, Operations Plan No. 3-53

ORGANIZATION OF COMBAT COMPANY

Headquarters Task Group 7.2
Joint Task Force SEVEN
APO 187 c/o Postmaster
San Francisco, California
22 December 1953



CONFIDENTIAL

CONFIDENTIAL

Headquarters Task Group 7.2
 Joint Task Force SEVEN
 APO 187 c/o Postmaster
 San Francisco, California
 22 December 1953

Incl 3 to Appendix II to Annex G to CTG 7.2, Operation Plan No. 3-53

COMBAT COMPANY - DETAILED ORGANIZATION

1. Co Hq

<u>NUMBER</u>	<u>RANK/GRADE</u>	<u>TITLE</u>	<u>INDIVIDUAL WEAPON</u>
1	Maj	Co Comdr	Carbine
1	Lt	Exec	Carbine
1	MSgt	1st Sgt	Carbine
1	Cpl	Dvr, Trk 1	Rifle M1
1	Pfc	Msgr	Carbine
1	Pfc	Opr, Rad	Carbine

2. Weapons Platoon

<u>Plat Hq</u>			
1	Lt	Plat ldr	Carbine
1	MSgt	Plat Sgt	Rifle M1
2	Pfc	Dvr, Trk L	Rifle M1
2	Pfc	Msgr	Carbine

Mortar Section

<u>Sec Hq</u>			
1	SFC	Sec Ldr	Rifle M1
1	Pfc	Msgr	Carbine

a. 1st, 2nd and 3rd Mortar Squads as indicated. Detailed breakdown for one squad follows:

<u>Mortar Squad</u>			
1	Sgt	Sqd Ldr	Rifle M1
1	Cpl	Gnr, Mort	Pistol
1	Pfc	Gnr, Mort, Asst	Pistol
1	Pvt	Ammo Bearer	Carbine

Recoilless Rifle Section

1	SFC	Sec Ldr	Rifle M1
1	Pfc	Msgr	Carbine

b. 1st, 2nd and 3rd 57mm Rifle Squads as indicated. Detailed breakdown for one squad follows;

<u>57mm Rifle Squad</u>			
1	Sgt	Sqd Ldr	Rifle M1
1	Cpl	Gnr, R	Pistol
1	Pfc	Gnr, R, Asst	Pistol
2	Pvt	Ammo, Bearer	Carbine

3. 1st, 2nd and 3rd Rifle Platoons as indicated. Detailed breakdown for one platoon follows:

1	Lt	Plat Ldr	Carbine
1	MSgt	Plat Sgt	Rifle M1
1	SFC	Plat Sgt, Asst	Rifle M1
2	Pfc	Msgr	Rifle M1

G-II-4-1

BEST AVAILABLE COPY

~~CONFIDENTIAL~~

Inclosure 3 to Appendix II to Annex G CTG 7.2, Operation Plan No 3-53 (Cont'd)

Weapons Squad

<u>NUMBER</u>	<u>RANK/GRADE</u>	<u>TITLE</u>	<u>INDIVIDUAL WEAPON</u>
1	SFC	Sqd Ldr	Rifle M1
1	Cpl	Gnr, LMG	Pistol
1	Cpl	Gnr, LMG	Pistol
1	Pfc	Gnr, MG, Asst	Pistol
1	Pfc	Gnr, MG, Asst	Pistol
4	Pvt	Ammo Bearer	2-Carbine 2-Rifle M1

4. 1st, 2nd and 3rd Rifle Squads as indicated. Detailed breakdown for one squad follows:

Rifle Squad

1	SFC	Sqd Ldr	Rifle M1
1	Sgt	Sqd Ldr, Asst	Rifle M1
1	Cpl	R Man, Auto	Pistol
1	Pfc	R Man, Auto, Asst	Rifle M1
5	Cpl or Pfc	R Man	Rifle M1

G-II-4-2

BEST AVAILABLE COPY

~~CONFIDENTIAL~~

~~CONFIDENTIAL~~

Headquarters Task Group 7.2
Joint Task Force SEVEN
APO 187 o/o Postmaster
San Francisco, California
22 December 1953

Appendix III to Annex G to CTG 7.2 Operation Plan 3-53

AMMUNITION

1. Units of the Eniwetok Garrison Force will maintain a "Basic Load" of small arms ammunition in unit areas as indicated below:

Cal .30 M1
Cal .30 Carbine
Cal .45
Cal .50

2. Ammunition for the 60mm Mortar, 57mm Rifle and two hundred (200) fragmentation hand grenades for the Combat Company will be stored in the Island Magazine Bldg #137 (see map, Appendix X). Upon notification of hostile alert, unit commanders concerned will draw a "basic load" of ammunition for these weapons.

3. Ammunition resupply point for all ammunition will be the Island Magazine (see map, Appendix X).

4. The Unit "basic load" will consist of the number of rounds of ammunition for each type of weapon, multiplied by the number of weapons in the unit.

5. The prescribed basic load for each weapon is as follows:

<u>WEAPON</u>	<u>BASIC LOAD PER WPN</u> <u>"RDS"</u>
US Rifle, Cal .30 M1	96
BAR, Cal .30, M1918A2	200
US Carbine, Cal .30, M2	45
MG, Cal .30, M1919A6-A4	1500
Pistol, Auto, Cal .45, M1911A1	21
Mortar, 60mm, M2	18 (HE-14; WP-4)
Rifle, 57mm, M-18	18 (HE-10; HEAT-5; WP-3)
Rifle, 75mm, M-20	18 (HE-10; HEAT-5; WP-3)

OFFICIAL:

EDWARD H. LAHTI
Colonel, Infantry
Commander

Barton J. Mallory
BARTON J. MALLORY
Major Arty
S3

BEST AVAILABLE COPY

G-III-1

~~CONFIDENTIAL~~

~~SECRET~~

Headquarters Task Group 7.2
Joint Task Force SEVEN
APO 187 c/o Postmaster
San Francisco, California
22 October 1953

Appendix IV to Annex G to CTG 7.2, Operation Plan No. 3-53

BEACHING CONDITIONS AT ENIETOK AND BIKINI ATOLLS

BIKINI ATOLL

<u>CODE</u> <u>NAME</u>	<u>ISLAND</u>	<u>BEACHING CONDITIONS</u>
Able	Bokobyadaa	Restricted to DUKW only - Can be worked by LCM but only in calm weather - Heavy ground swells.
Alfa	Bokaetokutoku	Restricted to DUKW only.
Baker	Bokonejien	Restricted to DUKW only - Can be worked by LCM but only in calm weather - Heavy ground swells.
Bravo	Bokororyuru	Restricted to DUKW only
Charlie	Nanu	LCM - Any tide Sandy beach DUKW - Any tide LSU - Low tide only (✓ -) to 1.6-Beaching on reef
Dog	Yurochi)	Connected by causeway
Easy	Uorikku)	
Fox	Romurikku)	
George	Aomoen	LSU - 0.6 tide or better LCM and DUKW any tide Sandy beach Joined to Fox at all tides by sand spit
How	Bikini	LST, LSU, LCM and DUKW any tide Sandy beach
Item	Bokonfuaaku)	At present these sites have only been worked by DUKW
Jig	Yonyaran)	
King	Eniairo)	
Love	Rochikarai)	
Mike	Ionchebi)	
Nan	Enyu	LSU, LCM and DUKW any tide, blasted channel Sandy beach
Tare	Eninman	Oboe-Airukijji, Peter-Airukiraru, Roger-Bigiren Sugar-Reere connected to Tare by Causeway LST, LSU and LCM - Any tide
Uncle	Enirikku	LST landing - Possible channel with blasting LSU - 4.8 tide or better LCM - 1.0 tide or better Sandy beach
Victor	Rukoji	LSU) Low tide only - ✓ to 1.4 LCM) Beaching on reef DUKW - Any tide

G-IV-1

BEST AVAILABLE COPY

~~SECRET~~

~~SECRET~~

Appendix IV to Annex G to CTG 7.2, Operation Plan No. 3-53 (Cont'd)

<u>CODE</u> <u>NAME</u>	<u>ISLAND</u>	<u>BEACHING CONDITIONS</u>
William	Chieerete	LSU - 6.0 tide or better LCM - 3.0 tide or better DUKW - Any tide Sandy beach
Yoke	Arriikan	LCM - 3.0 tide or better DUKW - Any tide Sandy beach
Zebra	Ourukaen	LSU - 2.0 tide or better LCM - Any tide DUKW - Any tide Sandy beach
<u>ENIWEETOK ATOLL</u>		
Alice Belle	Bogallua) Bogombogo)	LCMs and LSUs beach on sand bar through break in reef. Require plus 1.5 tide or under. Tracked equipment and vehicles only.
Clara	Ruchi	LCMs beach on sand bar through break in reef. Require plus 1.5 tide or under. Tracked equipment and vehicles only.
Daisy	Cochiti	Access by DUKW from Clara. LCM approach questionable.
Gene Helen Irene	Teiteriripucchi) Bogairikk) Bogon)	Entrance channel at Gene. LCMs, LSUs, and water taxis can enter at any tide.
Janet	Engebi	LCMs, LSUs and Water Taxis can enter at any tide. Freight pier and hard sand ramp.
Kate	Muzinbaaikku	LCMs require a plus 1.5 tide and LSUs require a plus 3.0 tide. Sandy beach landing.
Lucy	Kirinian	LCMs require a plus 1.5 tide and LSUs require a plus 3.0 tide. Sandy beach landing.
Mary	Bokonaarappu	LCMs can enter at any tide. LSUs require a plus 2.0 tide. Sandy beach landing
Nancy Olive Pearl	Yeiri) Aitsu) Rujoru)	LCMs only require a plus 2.0 tide. Sandy and coral beach landing.
Ruby Sally Tilda Ursula	Eberiru) Aomon) Bijjiri) Rojoa)	Connected by causeway. Entrance channel at Ursula. LCMs, LSUs and Tugs can enter at any tide. Freight pier and hard coral ramp.
Vera	Aaraanbiru	LCMs (only) require a plus 3.0 tide. Sand and coral beach
Yvonne	Runit	LCMs, LSUs, and YTLs (Tugs) can enter at any tide.

G-IV-2

BEST AVAILABLE COPY
~~SECRET~~

~~SECRET~~

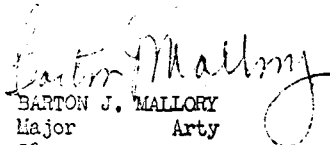
Appendix IV to Annex G to CTG 7.2, Operation Plan No. 3-53 (Cont'd)

CODE NAME	ISLAND	BEACHING CONDITIONS
David	Japtan	LCMs, LSUs, Water Taxis and YTLs (Tugs) can enter at any tide. Freight pier and a sandy beach landing.
Elmer	Parry	LCMs, LSUs, Water Taxis and YTLs (Tugs) can enter at any tide. Freight pier, personnel pier and two concrete ramps.
Fred	Eniwetok	LCMs, LSUs, Water Taxis and YTLs (Tugs) can enter at any tide. Freight pier, personnel pier, two steel ramps for vehicles, and one sand and loose coral ramp for tracked equipment.
Leroy	Rigili	LCMs require a plus 2.0 tide and LSUs require a plus 4.0 tide. Sandy beach landing.

Note: Plus X Tide indicates a tide for which the highwater level is X feet above mean low water springs.

OFFICIAL

EDWARD H. LAHTI
Colonel, Infantry
Commander


BARTON J. MALLORY
Major Arty
S3

2 INCL

1. Map of Eniwetok Atoll
2. Map of Bikini Atoll

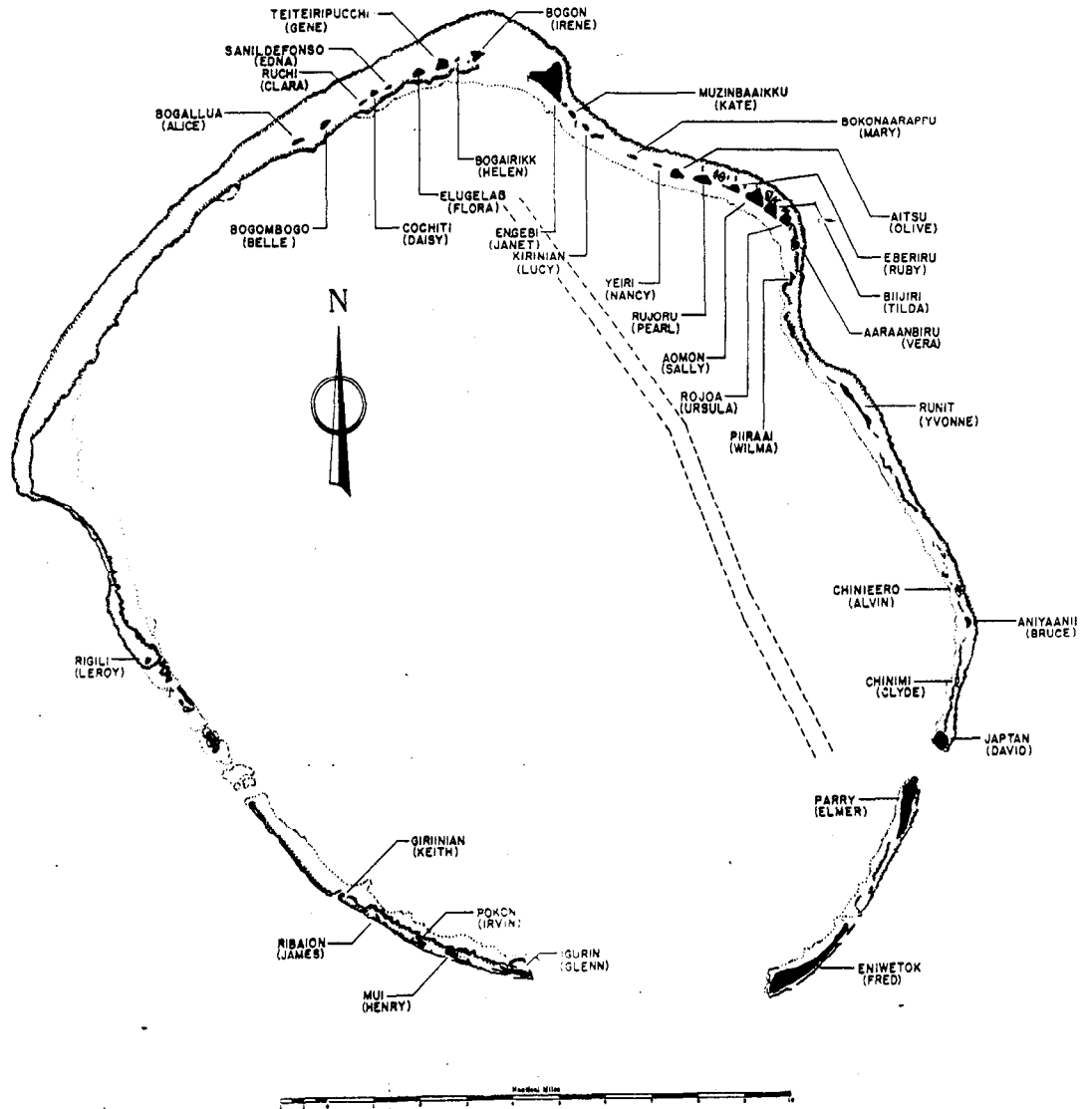
G-IV-3

BEST AVAILABLE COPY
~~SECRET~~

~~RESTRICTED~~

Incl 1 to Appendix IV to Annex G to CTG 7.2, Operation Plan No. 3-53

MAP OF ENIWETOK ATOLL



~~RESTRICTED~~
~~SECURITY INFORMATION~~

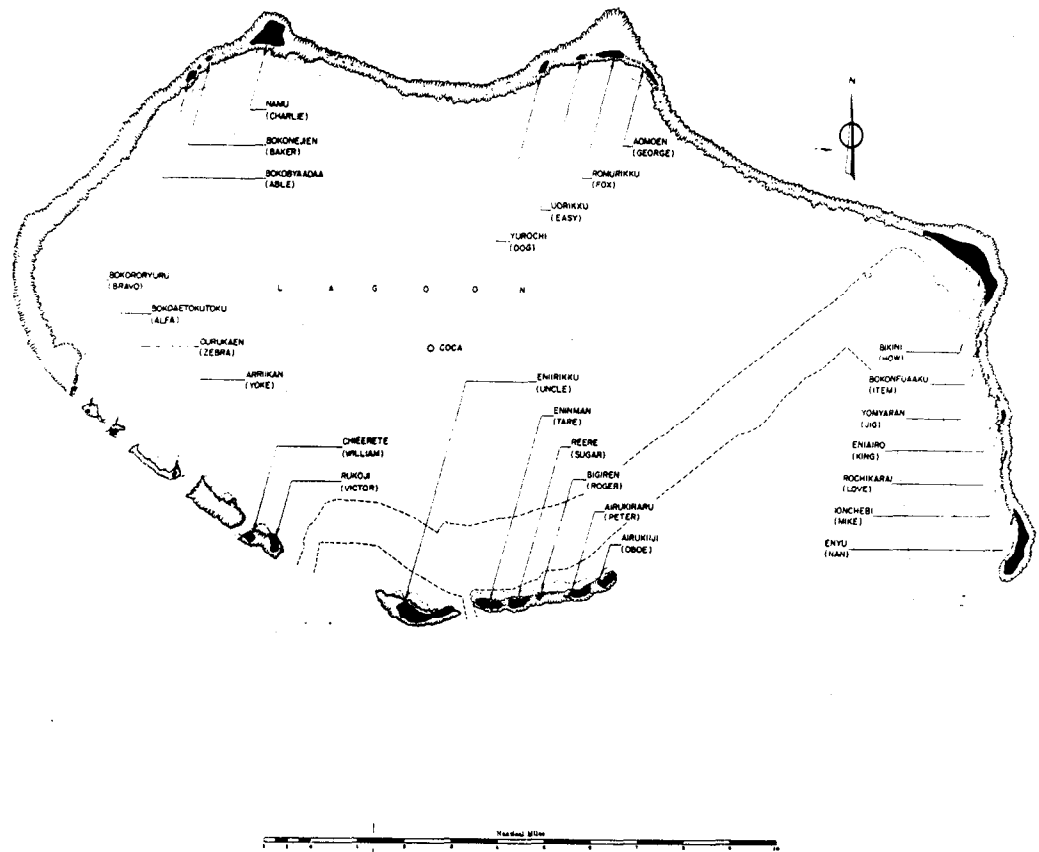
G-IV-4

BEST AVAILABLE COPY

~~RESTRICTED~~

Incl 2 to Appendix IV to Annex G to OTG 7.2 Operation Plan No. 3-53

MAP OF BIKINI ATOLL



BEST AVAILABLE COPY

~~RESTRICTED~~
~~SECURITY INFORMATION~~

Headquarters Task Group 7.2
 Joint Task Force SEVEN
 APO 187 c/o Postmaster
 San Francisco, California
 22 December 1953

Appendix V to Annex G to OEG 7.2, Operation Plan No. 7-53

INTER-ISLAND FLYING TIMES, ENIWETOK-BIKINI ATOLLS

C-47 (28 persons plus crew)

<u>CODE NAME</u>	<u>ISLAND</u>	<u>TO</u>	<u>TIME</u>
FRED	ENIWETOK	TARE - ENINMAN	1 hr 25 Min
FRED	"	KWAJALEIN	2 hr 40 Min
TARE	ENINMAN	"	1 hr 40 Min

L-13 (3 persons plus pilot) ENIWETOK ATOLL

<u>CODE NAME</u>	<u>ISLAND</u>	<u>TO</u>	<u>TIME</u>
FRED	ENIWETOK	ELMER	5 Min
ELMER	PARRY	BRUCE	4 Min
BRUCE	ANIYAANII	YVONNE	6 Min
YVONNE	RUNIT	TILDA	5 Min
TILDA	BIIJIRI	JANET - ENGEBI	7 Min

H-13 (1 person plus pilot) ENIWETOK ATOLL

<u>CODE NAME</u>	<u>ISLAND</u>	<u>TO</u>	<u>TIME</u>
FRED	ENIWETOK	ELMER	5 Min
ELMER	PARRY	BRUCE	5 Min
BRUCE	ANIYAANII	ALVIN	3 Min
ALVIN	CHINIBERO	YVONNE	3 Min
YVONNE	RUNIT	VERA	4 Min
VERA	AARAANBIRU	TILDA	1 Min
TILDA	BIIJIRI	PEARL	2 Min
PEARL	RUJURU	LUCY	4 Min
LUCY	KIRINIAN	JANET	2 Min
JANET	ENGEBI	FLORA	4 Min
FLORA	LUGELAB	ALICE- BOGALLUA	3 Min

H-19 (6 persons plus pilot) BIKINI ATOLL

<u>CODE NAME</u>	<u>ISLAND</u>	<u>TO</u>	<u>TIME</u>
OBOE	AIRUKIIJI	NAM	15 Min
NAM	ENYU	FOX	20 Min
FOX	ROMURIKKU	CHARLIS - NAMU	10 Min
OBOE	AIRUKIIJI	HOW - BIKINI	20 Min
"	"	BRAVO - BOKORORYURI	15 Min

NOTE:

1. The above times are average and will vary with load and wind conditions.
2. Fuel supply - L-13 5 hrs, H-13 2 hrs, H-19 2 hrs, and C-47 8 hrs.
3. Flying times for H-19 and H-13 are approximately the same.

OFFICIAL:

EDWARD H. LAHTI
 Colonel, Infantry
 Commander

Barton J. Mallory
 BARTON J. MALLORY
 Major Arty
 S3

G-V-1

BEST AVAILABLE COPY

~~SECRET~~

Headquarters Task Group 7-2
Joint Task Force SEVEN
APO 187 c/o Postmaster
San Francisco, California
22 December 1953

Appendix VI to Annex G to CTG 7.2 Operation Plan No. 3-53

AVERAGE RUNNING TIMES FOR MARINE CRAFT - ENIWETOK-BIKINI ATOLLS

ENIWETOK

FROM	TO	TIME
Water Taxi:		
Parry Personnel Pier	Eniwetok Personnel Pier	19 Min
Parry " "	Runit	45 Min
Parry " "	Rojoa	60 Min
Parry " "	Bijiri	1 hr, 10 Min
Parry " "	Engebi	1 hr, 30 Min
Parry " "	Blugelab	1 hr, 45 Min
Runit	Bijiri	25 Min
Engebi	Blugelab	15 Min

LCM:

Parry Freight Pier	Eniwetok Personnel Pier	25 Min
Parry " "	Eniwetok Freight Pier	35 Min
Parry " "	Runit	60 Min
Parry " "	Rojoa	1 hr, 20 Min
Parry " "	Bijiri	1 hr, 35 Min
Parry Personnel Pier	Engebi	2 hr
Parry " "	Blugelab	2 hr, 20 Min
Runit	Bijiri	30 Min
Engebi	Blugelab	20 Min

LCU:

Parry Freight Pier	Eniwetok Personnel Pier	30 Min
Parry " "	Eniwetok Freight Pier	42 Min
Parry " "	Runit	1 hr, 12 Min
Parry " "	Rojoa	1 hr, 36 Min
Parry " "	Bijiri	2 hr, 5 Min
Parry Personnel Pier	Engebi	2 hr, 25 Min
Parry " "	Blugelab	2 hr, 50 Min
Runit	Bijiri	45 Min
Engebi	Blugelab	25 Min

LCM:

Eninman	Enyu	1 hr, 20 Min
Eninman	Bikini	1 hr, 35 Min
Enyu	Bikini	35 Min
Eninman	Aomoen	1 hr, 35 Min
Enyu	Aomoen	1 hr, 50 Min
Eninman	Namu	2 hr
Namu	Aomoen	1 hr, 30 Min
Bikini	Aomoen	1 hr, 20 Min

G-VI-1

BEST AVAILABLE COPY

~~SECRET~~

~~SECRET~~

Appendix VI to Annex G to CTG 7.2 Operation Plan 3-53 (Cont'd)

<u>FROM</u>	<u>TO</u>	<u>TIME</u>
LCU:		
Eninman	Enyu	1 hr, 36 Min
Eninman	Bikini	2 hr, 5 Min
Enyu	Bikini	42 Min
Eninman	Aomoen	2 hr, 5 Min
Enyu	Aomoen	2 hr, 20 Min
Eninman	Namu	2 hr, 30 Min
Namu	Aomoen	1 hr, 40 Min
Bikini	Aomoen	1 hr, 30 Min

NOTE:

These times are estimated from running times for proportional distances at Eniwetok. They may be somewhat longer than indicated due to rougher lagoon water at Bikini.

OFFICIAL:

EDWARD H. LAHTI
Cololon, Infantry
Commander

Barton Mallory
BARTON J. MALLORY
Major Arty
S3

BEST AVAILABLE COPY

~~SECRET~~

~~CONFIDENTIAL~~

Headquarters Task Group 7.2
Joint Task Force SEVEN
APO 187 c/o Postmaster
San Francisco, California
22 December 1953

Appendix VII to Annex G, to CTG 7.2, Operation Plan No. 3-53

CONTROL OF ELECTRONIC EMISSIONS AND SURFACE LIGHTING

1. GENERAL:

Public Law 200 authorized the President to control electromagnetic radiations between 10 kilocycles and 100,000 megacycles which are suitable for use as a navigational aid beyond 5 miles.

a. Enemy Forces: See annex C, Intelligence and Security.

b. Friendly Forces: CINCPAC controls aids to navigation in the Pacific Command.

c. Assumptions:

(1) That enemy forces will rely primarily on celestial and/or radar means for navigation, but that electronic emissions and surface lighting could be used to increase the accuracy of attack.

(2) That the extent of control of electronic emissions should satisfy the following conditions:

(a) Degree of protection to be gained must be greater than the cost of controls to the war effort.

(b) Controls should be imposed on all types of non-essential emissions.

(3) That the importance of blackout, dimout, and camouflage has been reduced by the developments in electronic devices and bombing techniques so that total blackout is not longer justified.

d. Concept of Control:

(1) The priority of electronic facilities in order of essentiality is as follows:

(a) Air defense radars and the attendant air defense communication systems (aircraft control), antiaircraft weapon control, GCA, and similar circuits.

(b) Point-to-point military communications.

(c) Fleet communications including Fleet broadcasts.

(d) Aeronautical air/ground and aeronautical point-to-point circuits including those operated by civil or private agencies.

(e) Electronic Navigational Aids.

1. RACON and YE - YC beacons.

2. Low frequency homing beacons.

3. LORAN (a plan proposed by jcs for control of LORAN may preclude the necessity of shutting down this facility).

(f) Standard broadcast stations and short wave broadcasts.

(g) Utilities maintenance circuits.

BEST AVAILABLE COPY

G-VII-1.

~~CONFIDENTIAL~~

~~CONFIDENTIAL~~

Appendix VII to Annex G to CTG 7.2, Operation Plan No. 3-53 (Cont'd)

(2) It is considered that subparagraph 1d(1)(a) through 1d(1)(d) are essential services and will not normally be shut down.

For essential services, this command, see appendix I.

(3) Alert Conditions - See paragraph 1, Annex G, for definitions.

(a) White Alert

1. Lighting. After the outbreak of general hostilities a dimout will be placed in effect as follows:

a. Lights exposed to the sky or seaward and capable of creating skyglow or silhouetting vessels will be dimmed at least seventy-five percent.

b. Street lighting will be extinguished.

c. Vehicles will be driven during darkness with blackout lights.

2. Electronic Services. Normal, see annex E, communications.

3. Maritime Navigational Aids. As directed by CINCPACFLT and CCGDFOURTEEN.

(b) Red Alert

1. Lighting: All lighting will be extinguished or blacked out if necessary for operations.

2. Electronic Services: All services other than those listed in appendix I will be shut down. Key broadcast stations and electronic navigational aids will be operated only as directed by CINCPACFLT and CCGDFOURTEEN.

3. Maritime navigational aids (other than electronic): Extinguish all except designated key aids.

2. MISSION: CTG 7.2 will control electromagnetic radiations of TG 7.2 agencies and surface lighting in TG 7.2 unit and activity areas.

3. TASKS FOR SUBORDINATE UNITS:

a. Signal Detachment 7126 AU.

(1) Monitors and controls TG 7.2 communications facilities, appendix I, in accordance with provisions of para 1d(3) above.

b. MP Detachment 7126 AU.

(1) Enforces observance by all units and agencies of TG 7.2 of blackout or dimout conditions stated in para 1d(3).

x. Unit commanders and officers in charge of installations will submit plans for control of electronic emissions and surface lighting within the purview of this annex to this headquarters to arrive NLT 10 Jan 53.

4. LOGISTICS: CTG 7.2 Admin O 2-53

5. COMMAND AND SIGNAL: Para 5, basic plan.

OFFICIAL:

EDWARD H. LAHTI
Colonel, Infantry
Commander

Myron H. Dakin
MYRON H. DAKIN
Major Sigc
S5

G-VII-2

~~CONFIDENTIAL~~

BEST AVAILABLE COPY

~~CONFIDENTIAL~~

Headquarters Task Group 7.2
Joint Task Force SEVEN
APO 187 c/o Postmaster
San Francisco, California
22 December 1953

Inclosure I to Appendix VII to Annex G to CTG 7.2, Operation Plan No.3-53

ESSENTIAL ELECTRONIC AND LIGHTING SERVICES

1. Essential Electronic and Lighting Services for the operation of TG 7.2 in the event of enemy action are as follows:

<u>Equipment</u>	<u>Frequency</u>	<u>Application</u>
AN/PRC 10 and AN/VRC 18	43Mc 44Mc 45Mc	Combat Company Command Net (voice)
BC - 339	4035.0 Kc 5877.5 Kc 9920 Kc 11275 Kc 17870 Kc 19695 Kc 21840 Kc 22937.5 Kc	ENIWETOK - USARPAC Duplex Ratt/CW
BC 340	7710 Kc 9825 Kc 13610 Kc 18737.5 Kc	ENIWETOK-LOS ALAMOS
BC 610	2442 Kc 4565 Kc 9950 Kc 6270 Kc 2716 Kc 2836 Kc	ENIWETOK-BIKINI Duplex Ratt Ship-Shore Harbor Circuit (voice/CW)

MISCELLANEOUS COMMUNICATIONS:

SCR 508 25.6 Mc - 26.7 Mc Navy Boat Pool Net
(voice /CW)

OFFICIAL:

EDWARD H. LAHTI
Colonel, Infantry
Commander

11/22/53
MITON H. DAKIN
Major SigC
S5

BEST AVAILABLE COPY

G-VII-3-1

~~CONFIDENTIAL~~

~~CONFIDENTIAL~~

Appendix VIII to Annex G to CTG 7.2, Operation Plan No. 3-53

AIR DEFENSE

1. GENERAL:

a. Purpose: This annex sets forth guidance and assignment of responsibilities for air defense within Task Group 7.2.

b. Nature of Hostile Air Threat: The enemy's capabilities to launch an attack by aircraft against Eniwetok and Bikini Atolls are covered in annex C, Intelligence.

c. Concept of Air Defense Operation:

(1) CTG 7.2 has no organic means at his disposal for prosecuting active air defense. Any active defense measures for protection of the Eniwetok and Bikini Atolls must come from friendly forces of JTF SEVEN and CINCPAC.

(2) Lacking active air defense means, all air defense measures that can be taken by elements of TG 7.2 are passive in nature.

(3) Because of large density of population on the islands of Eniwetok and Bikini Atolls upon which personnel are based, it is not feasible to construct shelters for protection of personnel against air attack previous to declaration of general hostilities.

In the event enemy air attack is launched against this command previous to declaration of general hostilities, unit commanders will disperse the personnel of their units in their prescribed unit areas.

In the event declaration of general hostilities is made previous to enemy attack upon this command, or as soon as practicable after initial attack upon this command, the following defense construction will be completed by revetting or excavating, as appropriate, in order of priority as follows:

1. Power and distillation plant.
2. Transmitter and Receiver Station.
3. Personnel shelters (foxholes a/o trenches).
4. Refrigerator Banks.

d. Air Raid Warning Conditions: The following air raid warning conditions are defined and established for all elements of the Pacific Command and apply therefore to Task Group 7.2.

(1) Warning Yellow: Air attack probable. Unidentified aircraft are in the air defense area, and the situation is evaluated as "Air attack likely".

(2) Warning Red: Air or guided missile attack imminent. Enemy aircraft are in the air defense area or guided missiles have been detected.

(3) Warning White: All clear. No unidentified or hostile aircraft are in the air defense area and no guided missiles have been detected.

BEST AVAILABLE COPY

C-VIII-1

~~CONFIDENTIAL~~

~~CONFIDENTIAL~~

Appendix VIII to Annex G to CTG 7.2, Operation Plan No. 3-53 (Cont'd)

2. MISSION:

CTG 7.2 defends against air attack within TG 7.2 unit and activity areas.

3. TASKS OF SUBORDINATE UNITS:

a. MP Det, 7126 AU

Maintain observation post(s) as stated in Annex C.

x. (1) All personnel of TG 7.2 will transmit without delay to CTG 7.2 (telephone 2, after duty hours telephone 1 or 7) by the fastest possible means, warning of actual or impending dangerous situations resulting from actual air attack or unidentified aircraft which may possibly constitute an emergency situation.

(2) Unit commanders and appropriate officers in charge of facilities listed in par 1c(3) will prepare and submit to CTG 7.2, supporting plans to accomplish tasks assigned herein NLT 10 Jan 54.

4. ADMINISTRATION AND LOGISTICS:

Normal administrative and logistic procedures remain in effect.

5. COMMAND AND SIGNAL:

a. Command Posts: Normal

b. Communications:

(1) See Annex E.

(2) Air attack signals are as follows:

<u>Situation</u>	<u>Alert</u>
Imminent or actual air attack by enemy forces (Warning Red)	Alert to consist of fluctuating signal on siren for three minutes duration.
All clear (Warning White)	Dissemination of information by telephone or radio to subordinate elements by CTG 7.2.

OFFICIAL:

EDWARD H. LAHTI
Colonel, Infantry
Commander

Barton Mallory
BARTON J. MALLORY
Major Arty
S3

BEST AVAILABLE COPY

G-VIII-2

~~CONFIDENTIAL~~

~~CONFIDENTIAL~~

Headquarters Task Group 7.2
Joint Task Force SEVEN
APO 187 c/o Postmaster
San Francisco, California
22 December 1953

Appendix IX to Annex G to CTG 7.2, Operation Plan No. 3-53

ATOMIC, BIOLOGICAL AND CHEMICAL (ABC) DEFENSE PLAN

1. GENERAL:

An enemy attack against the Eniwetok - Bikini Atolls, employing atomic, biological or chemical weapons is possible. Delivery capabilities are the same as those of any other type of weapon. Such an attack may employ the use of one type of weapon or a combination of several weapons. An attack with one or more of these ABC weapons would devastate large areas and/or incapacitate large numbers of personnel. For enemy capabilities for launching air and surface attack see Annex C.

2. MISSION:

a. To defend against Atomic, Biological, and Chemical attack within TG 7.2 unit and activity areas.

b. To forward information relative to any ABC attack immediately to CJTF SEVEN.

3. TASKS FOR SUBORDINATE UNITS:

a. Med Plt, Svc Det, 7126 AU

(1) Monitors for detection of chemical and biological attack.

(2) Prepares to take biological and chemical samples and mark off contaminated areas.

x. (1) Commanders shall report any information of atomic, biological or chemical attack immediately to CTG 7-2, telephone 2; after duty hours telephone 1 or 7, including time, location, intensity and type of such an attack utilizing the most expeditious means available.

(2) Radiological defense monitoring will be accomplished by the Rad-Safe organization established by Annex F, CTG 7.2 Operation Plan No. 3-53.

(3) Prepare to execute decontamination measures upon order of CTG 7.2.

4. LOGISTICS: Admin O 2-53.

5. COMMAND AND SIGNAL:

a. Command, para 5, basic plan.

b. Communications, annex E.

OFFICIAL:

EDWARD H. LUNA
Colonel, Infantry
Commander

Edward H. Luna
BARTON J. MAILLORY
Major Arty
S3

BEST AVAILABLE COPY

G-IX-1

~~CONFIDENTIAL~~

Headquarters Task Group 7.2
Joint Task Force SEVEN
APO 187 c/o Postmaster
San Francisco, California
26 February 1954

Annex H to CTG 7.2 Operation Order No. 3-53

SHOT PHASE EMERGENCY PERSONNEL EVACUATION AND REENTRY PLAN

ENIWE TOK ISLAND

- References:
1. Annex R to CJTF SEVEN Operation Plan No. 3-53, dated 10 November 1953.
 2. Appendix III to Annex F to Operation Order No. 3-53, dated 18 February 1954.
 3. Annex D to CJTF SEVEN Evacuation and Reentry Order #1 dated 24 February 1954.

1. GENERAL

a. The Commander Task Group 7.2 (CTG 7.2) is responsible for emergency post-shot evacuation of all personnel on ENIWE TOK ISLAND upon directive by CJTF SEVEN.

b. It is not contemplated that any evacuation of personnel to surface ships from ENIWE TOK ISLAND will be effected. However, during both the ENIWE TOK and BIKINI phases of operations, Task Groups, Units and activities will maintain a capability for emergency post-shot evacuation. Such an evacuation will be executed upon receipt of orders from CJTF SEVEN. In the event radiological contamination conditions so dictate, evacuation will be for personnel safety only. Evacuation will not involve material or personal belongings other than toilet articles, etc. Any such evacuation will be capable of accomplishment on four (4) hours notice.

c. In the event radioactive fall-out is detected at ENIWE TOK ISLAND, Task Groups and Units will be notified by telephone, at which time all personnel will proceed to covered areas (buildings and tents). Provisions of Appendix III, Annex F, this order apply.

d. Should over-contamination from fall-out become apparent, specified Task Force vessels will proceed, on order of CJTF SEVEN to assist in the emergency evacuation of endangered personnel.

e. Aircraft based on ENIWE TOK ISLAND which are capable of flying to KAUJALEIN ATOLL or elsewhere, will be evacuated as directed by CTG 7.2.

2. GENERAL CONCEPT OF EMERGENCY EVACUATION

a. This plan has the concurrence of CTG 7.4 and is a guide for evacuation of ENIWE TOK ISLAND. The most important phase will be the rapid assembly of personnel coupled with an accurate personnel check and an orderly movement to designated embarkation points when called upon by Beachmasters.

b. The following areas, ENIWE TOK ISLAND, are designated as embarkation points for Task Groups:

(1) Main Cargo Pier: For all personnel on ENIWE TOK ISLAND of Task Group 7.4.

(2) Personnel Pier: For all personnel on ENIWE TOK ISLAND of Task Group 7.1, 7.2, 7.3, 7.5, and transient personnel.

c. H-day is the date of scheduled test shot.

H-1

~~CONFIDENTIAL~~
Annex H to CTG 7.2 Operation Order No. 3-53 (Cont'd)

d. M-hour is the time that radioactive fall-out is detected and Task Groups and Units are notified.

e. E-hour is the time in which the order to evacuate ENIETOK ISLAND is received.

f. Assembly Areas: For the purpose of muster roll call and accounting of personnel, unit housing areas are designated as Assembly Areas.

g. The USNS Ainsworth will be made available to TG 7.2 prior to E-hour for emergency evacuation of personnel from ENIETOK ISLAND.

h. The following boats are available to TG 7.2 Navy Detachment Boat Pool for purpose of transporting personnel from embarkation points to designated vessels:

(1) 3 ea, LCM (Landing Craft, Medium) from TG 7.3 Boat Pool and allocated for use for evacuating personnel from Personnel Pier.

(2) 2 ea, LCM (Landing Craft, Medium) TG 7.2 Navy Detachment Boat Pool and allocated to TG 7.4 for use for evacuation of TG 7.4 personnel from Main Cargo Pier.

(3) 1 ea, LCPL (Landing Craft Personnel) allocated to TG 7.2 to transport personnel as directed, and to remove TG 7.2 Boat Pool Crew and Military Police on final trip to evacuation ship. When personnel have been unloaded on final trip the LCPL will be moored to nearest buoy and the crew picked up by small craft operating from USNS Ainsworth.

i. (1) Evacuation Officer. S-4 (Telephone 4104) is designated Evacuation Officer.

(2) Transportation Officer (Telephone 3135) is designated Assistant Evacuation Officer.

j. All personnel stationed on ENIETOK ISLAND will be evacuated within E-plus 4 hours after the order to evacuate has been issued.

k. Beachmaster: Transportation Officer will designate a Beachmaster for each embarkation point. Transportation Officer TG 7.2, will supervise embarkation, transporting and allocation of personnel to ship available to TG 7.2 for evacuation of ENIETOK ISLAND.

l. CTG 7.4 will detail 4 Assistant Beachmasters to report for duty to Beachmaster at Main Cargo Pier.

m. CTG 7.2 will detail 4 Assistant Beachmasters to report for duty to Beachmaster at Personnel Pier.

n. Approximate number of personnel to be evacuated from ENIETOK ISLAND are as follows:

<u>TASK GROUP</u>	<u>BY SHIP</u>	<u>BY AIR</u>
(1) TG 7.1	40	--
(2) TG 7.2	1150	5
(3) TG 7.3	60	20
(4) TG 7.4	1100	500
(5) TG 7.5	<u>91</u>	<u>--</u>
TOTAL	2441	525

H-2

~~CONFIDENTIAL~~

BEST AVAILABLE COPY

3. PREPARATION FOR EVACUATION

a. Commanders and officers in charge of all units and activities on ENIWETOK ISLAND will prepare prior to H-day, to store properly and to secure all property, supplies, equipment, buildings, tents, etc., which will be left unattended in the event of emergency evacuation and prepare to shut off all non-essential lights and electrical devices. All doors and windows of buildings will be closed, sides of tents lowered and flaps closed.

b. Preparation of check list: Each responsible officer will prepare a check list to indicate, effective M-hour, the duty assignment of personnel and tasks to be performed to close down activities in preparation for evacuation.

c. As evacuation will be for personnel only, the following equipment will accompany individuals other than one (1) complete uniform worn on person, i.e., full length kahki uniform, fatigues or comparable clothing for civilians.

- (1) Personal toilet articles.
- (2) One (1) ea towel, bath.
- (3) One (1) ea raincoat or poncho.

d. Muster Roll Call: Prior to H-day, Unit and Detachment commanders will prepare rosters of personnel. Names will be listed alphabetically and not in protocol or rank sequence. Names will be double spaced and numbered in sequence. At the bottom of each page show page number and TG number. Roster to be prepared in at least five (5) copies. Separate rosters are to be prepared as follows:

- (1) For personnel to be evacuated by SHIP.
- (2) For personnel to be evacuated by AIR.

e. Distribution of roster: Upon announcement of E-hour; each Unit Commander will forward without delay one copy of his unit roster to S1 this headquarters (TG 7.2, Bldg #15) and one copy to designated Beachmaster at embarkation point. Other copies of rosters are to be used for internal control as deemed necessary.

f. Rations type "C": Upon notification of E-hour the Commissary Officer TG 7.2 will obtain from Motor Pool two (2) 2 1/2 ton cargo trucks with drivers. Cargo trucks will be loaded with 5,000 type "C" rations. Vehicles will be parked under cover ready for dispatch upon order of CTG 7.2 to Main Cargo Pier for transportation by LCM boats to USNS Ainsworth for issue as required.

g. Pet Evacuation: It will be the responsibility of each owner of pets (dogs and cats) to prepare a suitable crate for pets. Crated pet will accompany the individual upon evacuation to ship.

4. EVACUATION E-HOUR

a. Upon receipt of order to evacuate ENIWETOK ISLAND (E-hour) Commanders of all units will assemble personnel in their respective unit housing areas. Upon arrival in housing areas roll call check of personnel will be made within E plus one (1) hour. Report of number of personnel present and absent will be forwarded to CTG 7.2 (S-1, phone 3101) by Task Groups as follows:

- (1) CTG 7.1 (Senior Representative on ENIWETOK ISLAND)

Annex H to CTG 7.2 Operation Order No. 3-53 (Cont'd)

- (2) CTG 7.3 (Liaison Officer ENIWE TOK ISLAND)
- (3) CTG 7.4 (Director of Personnel)
- (4) CTG 7.5 (Superintendent H&N on ENIWE TOK ISLAND)
- (5) All Unit and Detachment Commanders of TG 7.2 including TG 7.2 Navy Detachment and Coast Guard Detachment.
- (6) Headquarters Commandant TG 7.2 will report transient personnel.

b. Units will standby under cover for call from Beachmaster and will be prepared to march personnel to designated embarkation points. The movement of personnel from assembly areas to embarkation points will coincide with the availability of small craft to transport personnel to USNS Ainsworth.

c. Upon completion of first muster by Unit Commanders in their respective unit housing areas, and upon order of CTG 7.2, Beachmasters will immediately start calling units by telephone to embarkation points for evacuation to awaiting vessels. Commanders will again check personnel by roster as they are loaded aboard ship and report to CTG 7.2 (S-1) the number and names of those missing or unaccounted for.

d. Upon receipt of order to evacuate (E-hour) Surgeon TG 7.2 will upon call from Beachmaster move all ambulatory patients to the embarkation point, Personnel Pier. All non-ambulatory patients will be transported to MTS Terminal Building #89 for evacuation by air.

e. Upon receipt of order to evacuate, Commanding Officer, Coast Guard Loran Station will prepare Loran facilities to operate by remote control in accordance with instructions contained in Commander, 14th Coast Guard District letter dated 26 Jan 54, file GO 8, Serial #02156 to CG CG Loran Station A/Ps 187, Subject: "Remote Operations of Loran Station."

f. Upon receipt of order to evacuate, Holmes & Narver (TG 7.5) will prepare the main power and water distillation plants, ENIWE TOK ISLAND for unattended operation for a minimum period of 72 hours.

g. Motor Transportation. TG 7.2 Motor Pool Officer will make available at E-plus 1 hour, one large Bus with driver to TG 7.4 for the purpose of transporting personnel from TG 7.4 housing area to Main Cargo Pier, embarkation point.

h. Provost Marshal will provide at E-hour Military Police Guard at designated embarkation points. A vehicle patrol guard will be maintained for security of government and personal property until relieved by CTG 7.2.

i. All officers will secure classified files prior to evacuation.
See Appendix I to Annex "H"

j. Funds: Accountable and responsible officers will safely secure appropriated and non-appropriated funds.

k. Officer of each Task Group designated in par 4a will report to CTG 7.2 (S-1) when all personnel of their Task Groups have been evacuated.

5. REENTRY OF ENIWE TOK

a. Upon announcement by CTG 7.2 that general reentry will be effected, debarkation will commence and proceed as rapidly as landing craft are made available.

~~CONFIDENTIAL~~

Annex H to CTG 7.2 Operation Order No. 3-53 (Cont'd)

b. First priority of reentry will be given to Rad-Safe Personnel, personnel performing housekeeping duties, such as Mess Personnel, Medical, Holmes & Narver, Signal Communication, etc.

c. Upon order of CTG 7.2 Task Groups and Units will resume normal duty assignments.

OFFICIAL:

EDWARD H. LAHTI
Colonel, Infantry
Commander

William Troy
WILLIAM TROY
Lt Col, ~~MC~~
S-4

H-5

~~CONFIDENTIAL~~

BEST AVAILABLE COPY

~~SECRET~~

Headquarters Task Group 7.2
Joint Task Force SEVEN
APO 187 c/o Postmaster
San Francisco, California
9 April 1954

Appendix I to Annex M to CTG 7.2 Operation Order No. 3-53

EMERGENCY EVACUATION, DESTRUCTION OR SAFEGUARDING
OF CLASSIFIED REPOSITORIES

- Reference: 1. CTG 7.2, SOP No. 56-40, dated 5 October 1953.
2. Security Memo No. 6, CJTF SEVEN, dated 18 September 1953.
3. Security Memo No. 11, CJTF SEVEN, dated 5 April 1954.

1. GENERAL:

a. In the event of an emergency post-shot evacuation of personnel from ENIWETOK ISLAND, it is not contemplated that classified documents and/or materials in the custody of CTG 7.2 (other than certain cryptological equipment covered separately) will be evacuated or destroyed, but will be secured in present repositories and locations for recovery upon reentry.

b. CTG 7.2 will, however, retain the capability for evacuation and/or destruction of specified documents and/or materials as outlined below:

(1) DESTRUCTION: Classified documents and/or materials will be destroyed only on order of CTG 7.2. When ordered, destruction will be in accordance with CTG 7.2 SOP 56-40, dated 5 October 1953.

(2) EVACUATION: Classified documents and/or materials will be evacuated only on order of CTG 7.2. When ordered only those documents and/or materials specifically designated will be evacuated by the individual custodians. Evacuation will be coordinated by the TOP SECRET - RESTRICTED DATA CONTROL OFFICER. Evacuation of Crypto Equipment will be in accordance with letter CTG 7.2, subject: "Evacuation of Crypto Equipment in Case of Extensive Fall-Out", dated 9 March 1954.

2. PREPARATION FOR EVACUATION:

a. All CUSTODIANS will prepare prior to 15 April 1954 to store properly all classified documents and/or equipment which will be left unattended, and to prepare and maintain current inventories of all documents and/or materials classified SECRET or higher in their possession.

b. The SECRET - TOP SECRET - RESTRICTED DATA CONTROL OFFICER will prepare and maintain current inventories of all documents and/or materials classified SECRET or higher, prepare and maintain a current catalogue of all repositories used for storage of classified matter in TG 7.2, prepare and maintain current lists of classified documents and/or materials to be evacuated if such evacuation is ordered by CTG 7.2, plan and be prepared to direct a final repository check in Building 15 under supervision of S2, TG 7.2.

c. Signal (Crypto) Security Officer will prepare separate plans for destruction, evacuation or local storage of all crypto equipment, and prepare check-lists of tasks to be performed in each instance with designated personnel responsible for the accomplishment of the check-lists.

d. The Adjutant will maintain current records of combinations (or duplicate keys) to all repositories used for storage of classified documents.

H-I-1

BEST AVAILABLE COPY
~~SECRET~~

Appendix I to Annex H to CTG 7.2 Operation Order No. 3-53 (Cont'd)

e. S2 will plan and supervise final repository check for all elements of TG 7.2 and coordinate final check of Air Force areas with Headquarters, CTG 7.4.

f. S2, TG 7.2 will coordinate with all Task Groups maintaining repositories on ENIWETOK ISLAND, all necessary measures to insure compliance with Security Memo No. 11, CJTF SEVEN.

3. EVACUATION (E-HOUR):

a. Upon receipt of order to evacuate ENIWETOK ISLAND (E-hour) all CUSTODIANS will (1) store and secure all classified documents and/or materials for which they are responsible, (2) insure that they have in their possession a current inventory of all documents classified SECRET or higher and (3) be prepared to deliver inventories to CTG 7.2 on call.

b. SECRET - T/S CONTROL OFFICER will (1) evacuate and properly safeguard all inventories and distribution records of documents classified SECRET or higher, (2) evacuate his catalogue of repositories, (3) direct final repository check of Building #15 and report completion to CTG 7.2 (Attn: S2) prior to evacuation.

c. Signal (Crypto) Security Officer will execute appropriate plan as ordered and report completion to CTG 7.2 (Attn: S2) prior to evacuation.

d. Adjutant will evacuate all combinations (duplicate keys) of repositories used for storage of classified documents and/or materials.

e. Commander, MP Detachment will (1) designate one NCO and 4 MP's to report to the SECRET - TOP SECRET CONTROL OFFICER at E-Hour to assist in final repository check prior to evacuation, (2) perform a sweep of ENIWETOK ISLAND to insure that no personnel remain on the island.

f. OIC, CIC Detachment will designate three (3) men to report to S2, TG 7.2 to assist in final repository check.

g. A representative of CTG 7.4 and representatives of ENIWETOK elements of Task Groups 7.1, 7.3 and 7.5 will report to CTG 7.2 (Attn: S2) complete compliance with Security Memo No. 11, CJTF SEVEN prior to evacuation.

h. S2, TG 7.2 will supervise overall execution of the activities listed above and report completion to CTG 7.2.

4. REENTRY:

a. CUSTODIANS will inventory all repositories immediately on reentry and report results to CTG 7.2. In the event general reentry is impossible, CUSTODIANS will surrender their inventories to designated Recovery Teams who will recover and inventory contents of all (or specified) repositories under supervision of S2, TG 7.2.

b. Representative of CTG 7.4 and representatives of ENIWETOK elements of Task Groups 7.1, 7.3 and 7.5 will report results of inventory of repositories to CTG 7.2 (Attn: S2) as soon as possible after reentry.

William Troy
WILLIAM TROY
Lt Col, QMC
34

EDWARD H. LAHTI
Colonel, Infantry
Commander

H-1-2

BEST AVAILABLE COPY

~~SECRET~~

UNCLASSIFIED