

MARSHALL ISLANDS FILE TRACKING DOCUMENT

Record Number: 43

File Name (TITLE): Command and Statistical
Summary (Final), Task Grp. 132.4

Document Number (ID): 68980

DATE: none

Previous Location (FROM): CIC

AUTHOR: _____

Additional Information: JU4 Ref. C.4.2

OrMlbox: 23

CyMlbox: 2

FINAL
COMMAND AND STATISTICAL SUMMARY
TASK GROUP 132.4 PARTICIPATION



IVY
REF: C.4.2

*Book 1
charts*

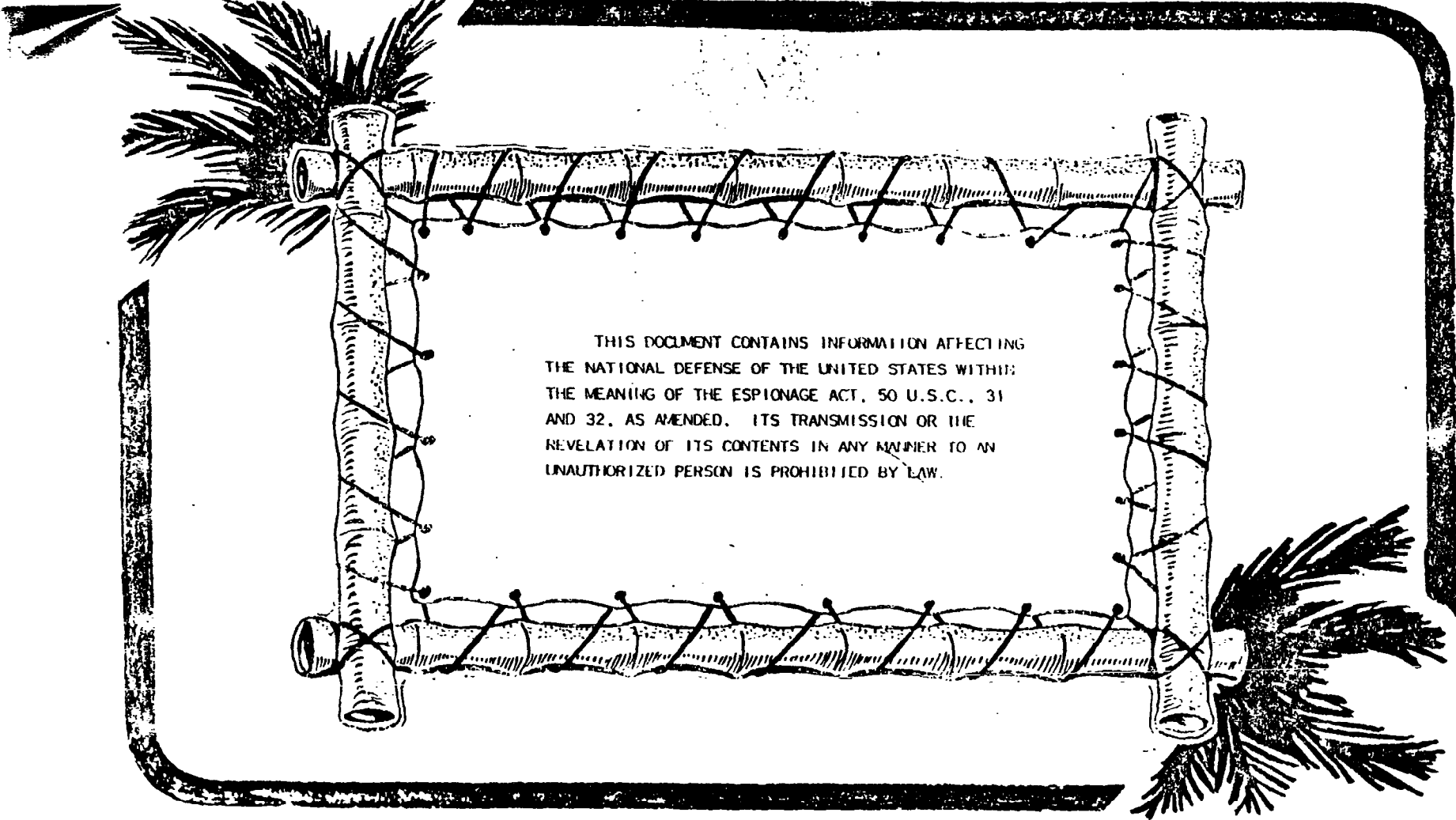


OPERATION IVY"

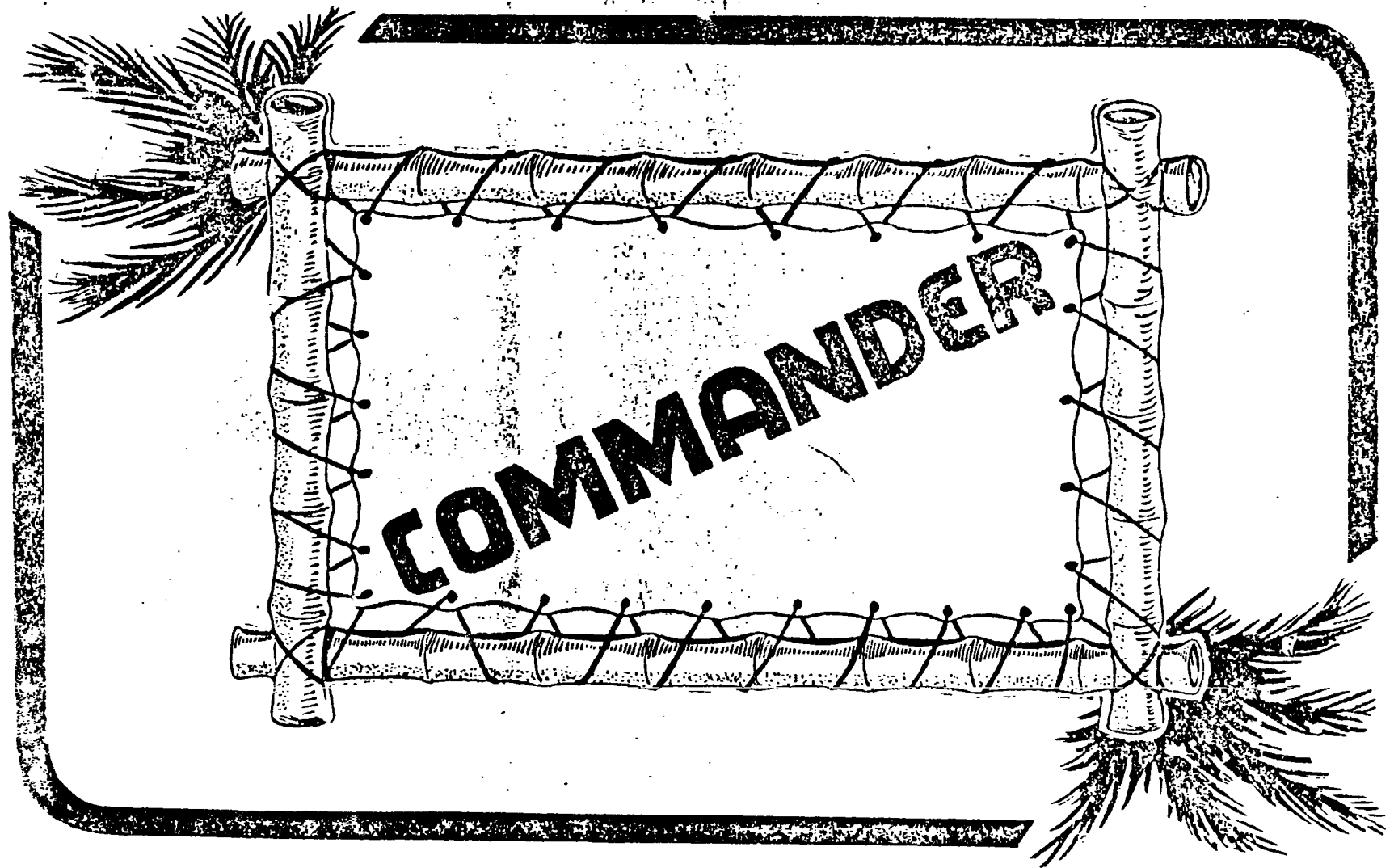
68980

14
DECLASSIFIED BY
SIGNATURE
*Johny Chief / 15cm
1/14/98*

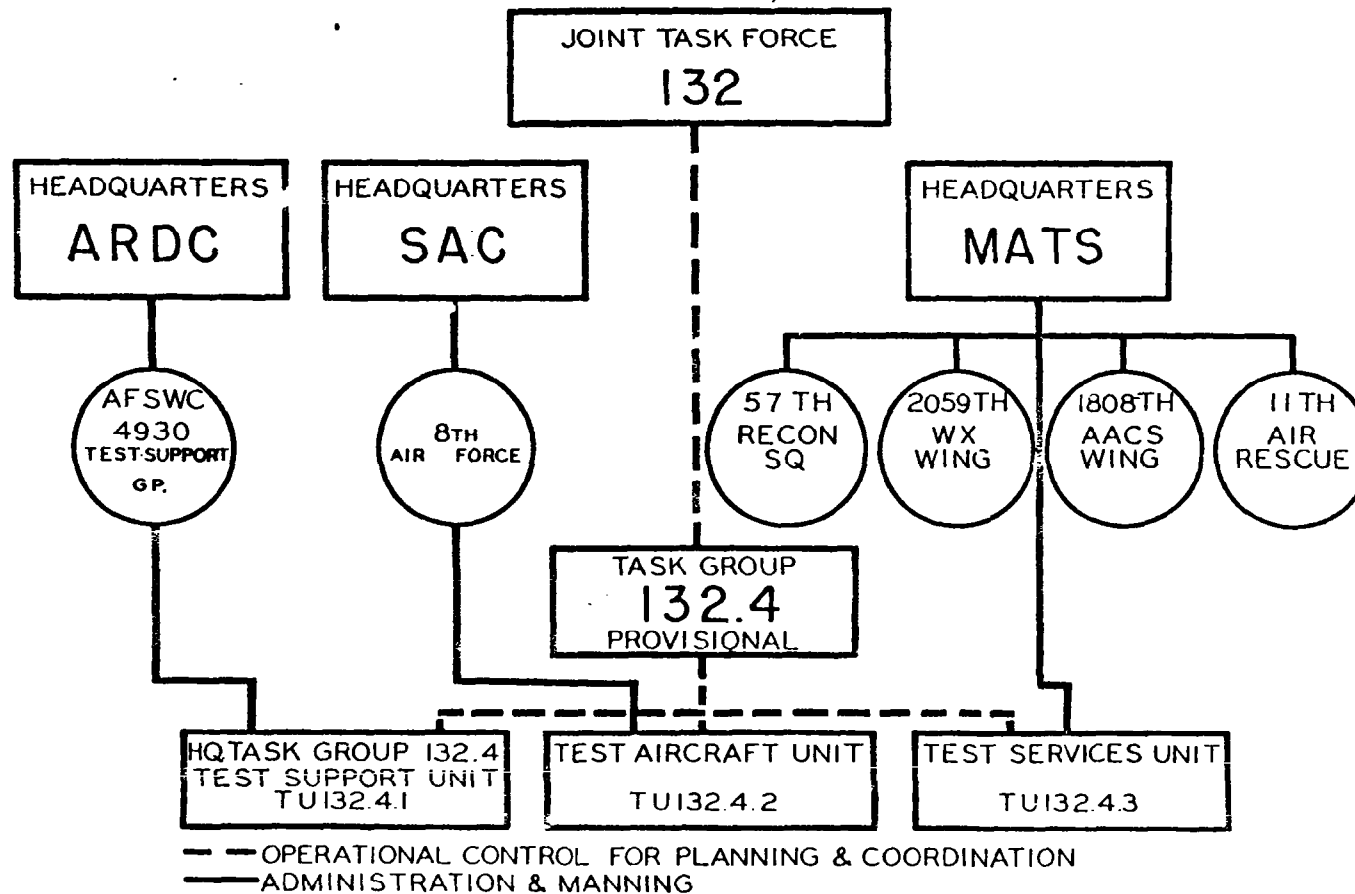
BEST AVAILABLE COPY



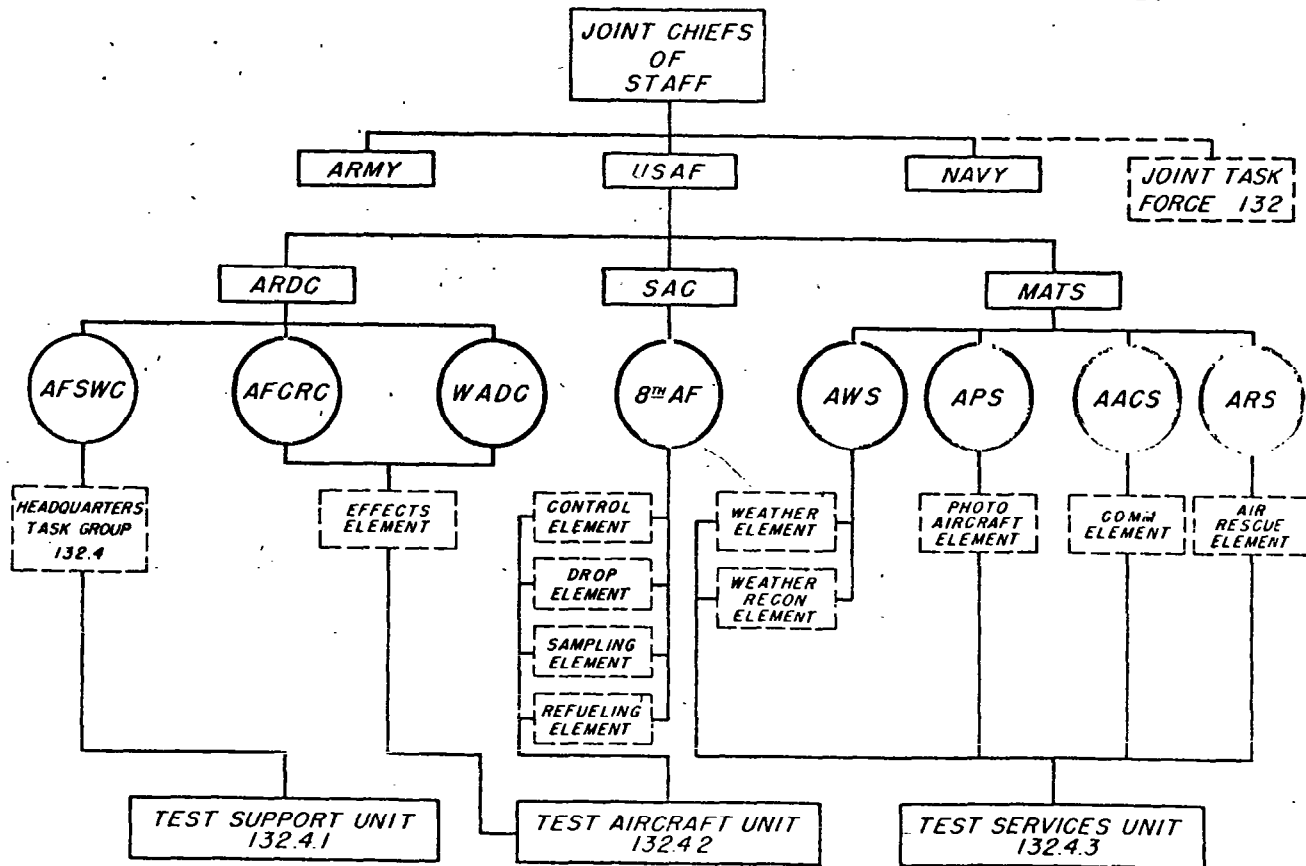
THIS DOCUMENT CONTAINS INFORMATION AFFECTING
THE NATIONAL DEFENSE OF THE UNITED STATES WITHIN
THE MEANING OF THE ESPIONAGE ACT, 50 U.S.C., 31
AND 32, AS AMENDED. ITS TRANSMISSION OR THE
REVELATION OF ITS CONTENTS IN ANY MANNER TO AN
UNAUTHORIZED PERSON IS PROHIBITED BY LAW.



.. COMMAND RELATIONSHIP CHART ..

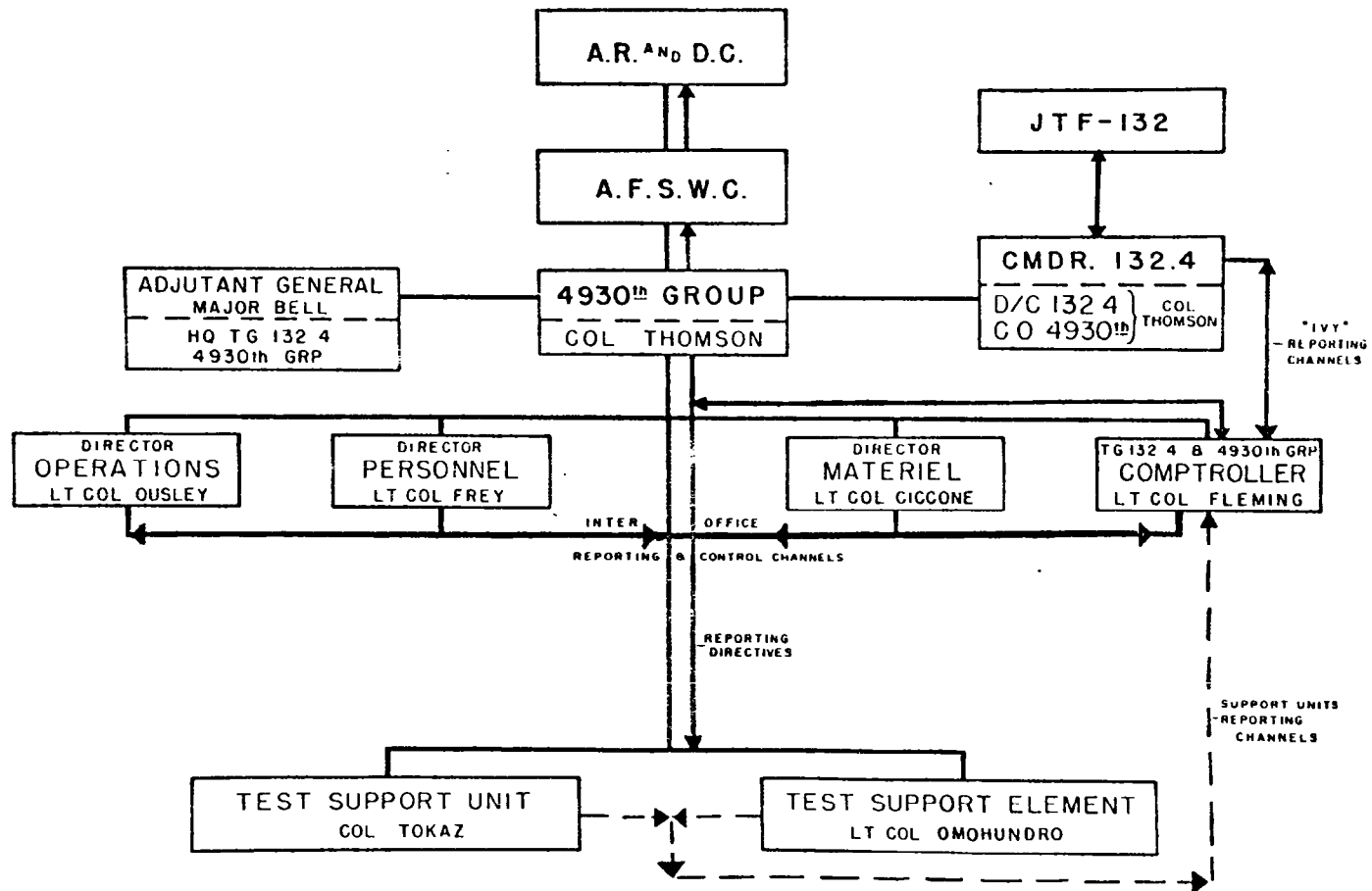


PARENT COMMANDS OF TASK GROUP 132.4



HQ. TG 132.4 / 4930TH GROUP

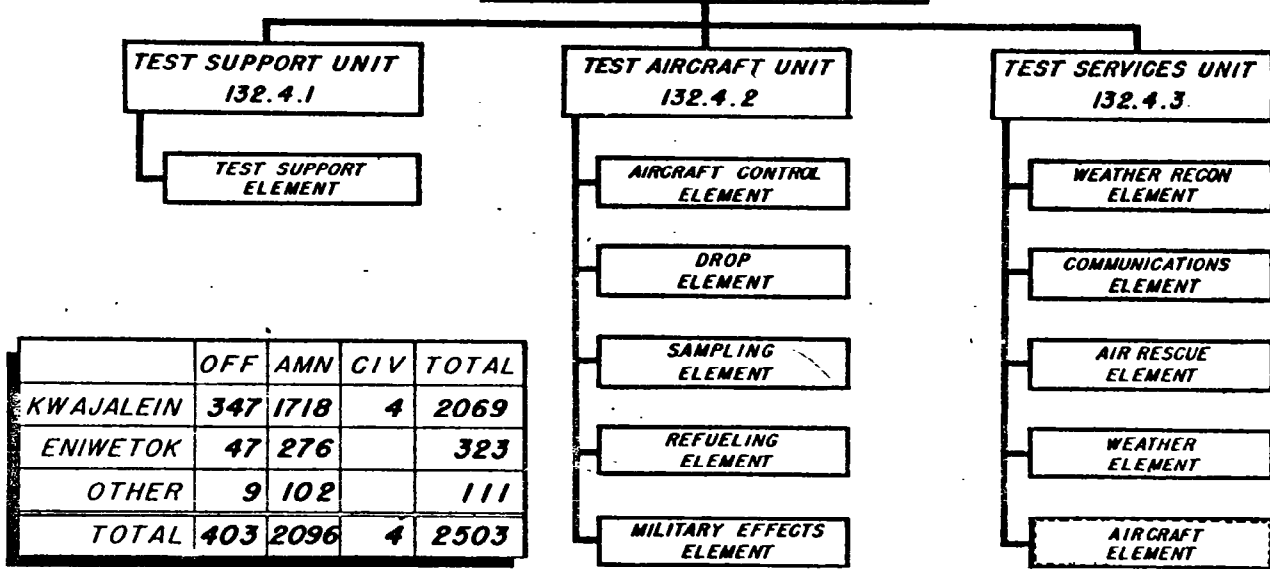
COMMAND STRUCTURE / CHANNELS / ADMINISTRATIVE CONTROL



ORGANIZATION & BASIC MISSIONS

TASK GROUP 132.4 PROV.

**HEADQUARTERS
TASK GROUP 132.4 PROV.**



	OFF	AMN	CIV	TOTAL
KWAJALEIN	347	1718	4	2069
ENIWETOK	47	276		323
OTHER	9	102		111
TOTAL	403	2096	4	2503

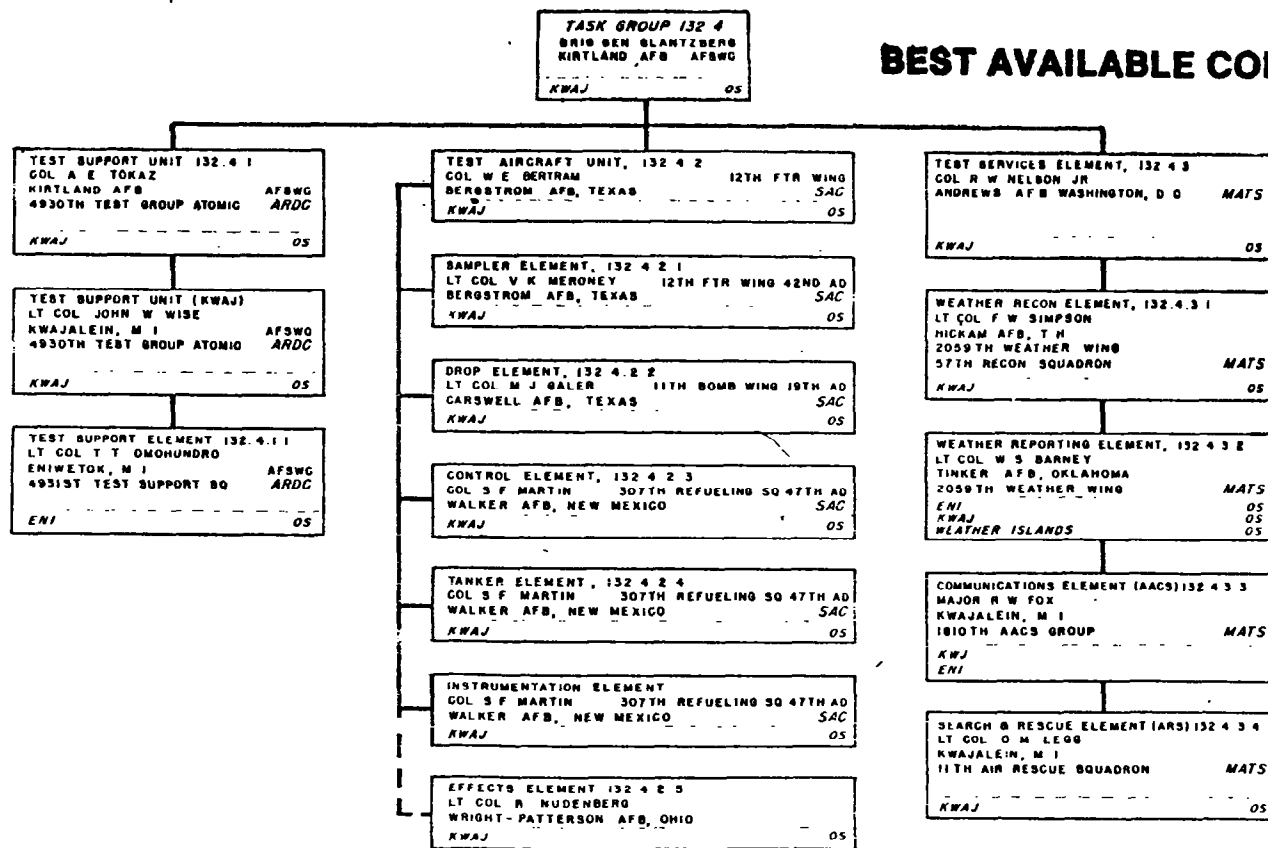
BASE SUPPORT
ATOLL TRANSPORTATION
A/C & PERS DECONTAMINATION

MISSIONS
CLOUD SAMPLES
TECH MEASUREMENTS
KING AIR DROP
AIRBORNE CONTROL

WEATHER: SERVICE - RECON
CLOUD TRACKING
COMMUNICATIONS
AIR - SEA RESCUE
PHOTO & SAMPLE AIRLIFT

TASK GROUP UNITS BY GEOGRAPHIC LOCATION Z1/OS

BEST AVAILABLE COPY



**TRAFFIC HANDLED
UNCLASSIFIED AND RESTRICTED MESSAGE CENTER**

	JAN	FEB	MARCH	APRIL	MAY	JUNE	JULY	AUG	SEPT	OCT	NOV	TOTAL
IN	404	1264	2832	4588	3269	4127	3818	3951	2767	1145	976	29141
OUT	139	312	897	1355	3817	2143	3516	2812	1996	895	491	16573
TOTAL	543	1576	3729	5943	7086	6270	7134	6763	4763	2040	1467	45714

TELETYPE

IN	27	58	139	812	1963	2112	2465	1813	2194	2635	1912	16159
OUT	8	39	58	167	193	204	254	277	278	526	307	2311
TOTAL	35	97	197	979	2156	2316	2719	2090	2472	3161	2219	18470

COMBINED TOTAL

BEST AVAILABLE COPY

TOTAL	578	1673	3926	6922	9242	8586	9853	8853	7235	5201	3686	65755
--------------	------------	-------------	-------------	-------------	-------------	-------------	-------------	-------------	-------------	-------------	-------------	--------------



[REDACTED]

EXPERIMENTAL PROGRAMS "OPERATION IVY"

<i>PROGRAM NUMBER</i>	<i>DESCRIPTION</i>	<i>SPONSOR</i>
<i>1.0</i>	<i>RADIOCHEMISTRY</i>	<i>AEC</i>
<i>2.0</i>	<i>PROGRESS OF THE NUCLEAR REACTION</i>	<i>AEC</i>
<i>3.0</i>	<i>SCIENTIFIC PHOTOGRAPHY</i>	<i>AEC / U. S. AIR FORCE</i>
<i>4.0</i>	<i>NEUTRON MEASUREMENTS</i>	<i>AEC</i>
<i>5.0</i>	<i>GAMMA-RAY MEASUREMENTS</i>	<i>AEC U. S. NAVY U. S. ARMY</i>
<i>6.0</i>	<i>BLAST MEASUREMENTS</i>	<i>AEC U. S. AIR FORCE U. S. ARMY</i>
<i>7.0</i>	<i>LONG-RANGE DETECTION</i>	<i>U. S. AIR FORCE U. S. ARMY</i>
<i>8.0</i>	<i>THERMAL RADIATION MEASUREMENTS</i>	<i>AEC / U. S. AIR FORCE</i>
<i>9.0</i>	<i>ELECTROMAGNETIC PHENOMENA</i>	<i>AEC U. S. ARMY U. S. AIR FORCE</i>
<i>10.0</i>	<i>TIMING AND FIRING</i>	<i>AEC</i>
<i>11.0</i>	<i>PRELIMINARY GEOPHYSICAL SURVEY OF THE TEST AREA</i>	<i>AFSWP / AEC</i>

[REDACTED]

AIRCRAFT REQUIREMENTS

AIRCRAFT TYPES

B-36	3	KB-29	10	H-19	3
B-50	3	WB-29	10	H-13	3
B-47	1	C-54	3	F-84	16
B-17	1	C-47	4	SA-16	2
B-29	4	L-13	15	SB-29	2

TOTAL A/C 80

COMMAND SOURCE

SAC		ARDC		MATS		TAC		APG		ARMY	
B-36	2	B-36	1	WB-29	10	H-19	2	H-19	1	H-13	3
B-29	2	B-50	2	SB-29	2						
F-84	16	B-47	1	SA-16	2						
KB-29	10	C-47	4	C-54	3						
RB-50	1	B-17	1								
		L-13	15								
		B-29	2								
TOTAL	31		26		17		2		1		3

LOCATION

KWAJ				ENI			
F-84	16	C-54	3	L-13	15		
B-29	4	B-17	1	H-13	3		
KB-29	10	SA-16	2	H-19	2		
SB-29	2	C-47	3	C-47	1		
WB-29	10	B-36	3				
B-47	1	B-50	3				
H-19	1						
TOTAL			59				21

EMPLOYMENT OF AIRCRAFT

I ATOMIC CLOUD SAMPLING

F-84 B-29 CONTROL
 KB-29 WB-29
 B-36F B-50

II WEAPONS EFFECTS ON A/C

B-36D B-47
 B-29

III PHOTOGRAPHY

RB-50 C-54

IV INTER & INTRA ATOLL TRANS

B-17 C-47
 L-13 H-13
 H-19

V ADDITIONAL AIRCRAFT

6 R6D 12 P2V
 2 PBM 5 PERMANENT AIRCRAFT (KWAJ.)

AIRFIELD FACILITIES DATA

AIRFIELDS	LOCATIONS	RUNWAY TYPE & LENGTHS	RADIO FACILITIES	LIGHTING	FUEL
HICKAM	OAHU I.H.	6400' H/S 3000,000LBS	RANGE TOWER	ROTATING BEACON BOUNDRY LIGHTS RUNWAY FLOODS RUNWAY LIGHTS H/I APPROACH LIGHTS	145-100-73/80
JOHNSON IS	JOHNSON IS.	6000' H/S 300,000 LBS	RANGE RBN A/G VOICE TOWER	ROTATING BEACON RUNWAY FLOODS RUNWAY LIGHTS H/I RUNWAY LIGHTS	145-100
KWAJALEIN NAS	KWAJALEIN IS.	6700' H/S 200,000 LBS	RANGE RBN A/G VOICE TOWER	ROTATING BEACON RUNWAY LIGHTS	145-100
ENIWETOK	ENIWETOK IS.	6800' H/S 150,000 LBS	RBN TOWER	ROTATING BEACON STRIP LIGHTS	100-91
MAJURO	MAJURO IS.	CLOSED	SPECIAL PERMISSION MUST BE OBTAINED FROM CINCPAC BEFORE ENTRY. RBN, AND A/G VOICE AVAILABLE ON REQUEST		
WAKE	WAKE IS	7000' H/S	RBN A/G VOICE TOWER	ROTATING BEACON H/I RUNWAY LIGHTS	CONTRACT 145-100
AGANA NAS	GUAM	7000' H/S 150,000 LBS	RANGE RBN A/G VOICE TOWER	ROTATING BEACON RUNWAY FLOODS H/I RUNWAY LIGHTS	145
PARRY	PARRY IS	1300'			
ANIYAANII	ANIYAANII IS.	632'			
RUNIT	RUNIT IS.	1030'			
BIIJIRI	BIIJIRI IS.	1000'			
ENGEBI	ENGEBI IS.	2475'			
BOGALLUA	BOGALLUA IS	800'			

EMPLOYMENT OF T.G.-132.4 AIRCRAFT BY PROJECT

PROJECT NUMBER	PROJECT NAME	AIRCRAFT INVOLVED	AGENCY
1.1	YIELD MEASUREMENTS	2B-36H 2B-50D	AEC
1.3	SAMPLE COLLECTING	16F-84G 2 B-29 10 KB-29	AEC
2.5	TRANSIT TIME (KING)	2 B-50D	AEC
3.1	BALL OF FIRE YIELD	3C-54 1RB-50	AEC DOD
3.2	CLOUD PHENOMENA	3C-54 1RB-50 2C-47	AEC DOD
3.6	BHANGMETERS	2B-36H 1B-36D 1B-47B	AEC
3.7	PRELIMINARY CRATER PHOTO	3C-54 1 RB-50	DOD
6.10	FREE AIR PRESSURE (MANNED AIRCRAFT)	1B-36D 1 B-47B	DOD
6.11	FREE AIR PRESSURE (GANISTER DROP)	2 EB-29	DOD
7.3	GAS MOISTURE AND DEBRIS SAMPLING	16F-84G 2 B-29 10 KB-29, 10 WB-29	DOD
8.4	AIR ATTENUATION	2 B-50D	AEC
8.5	THERMAL RADIATION (MANNED AIRCRAFT)	1 B-36D 1B-47B	DOD
9.4	INDIRECT BOMB DAMAGE ASSESSMENT	1B-36D 2 B-50D	DOD
10.2	BOMB RELEASE TONE	2 B-36H	AEC

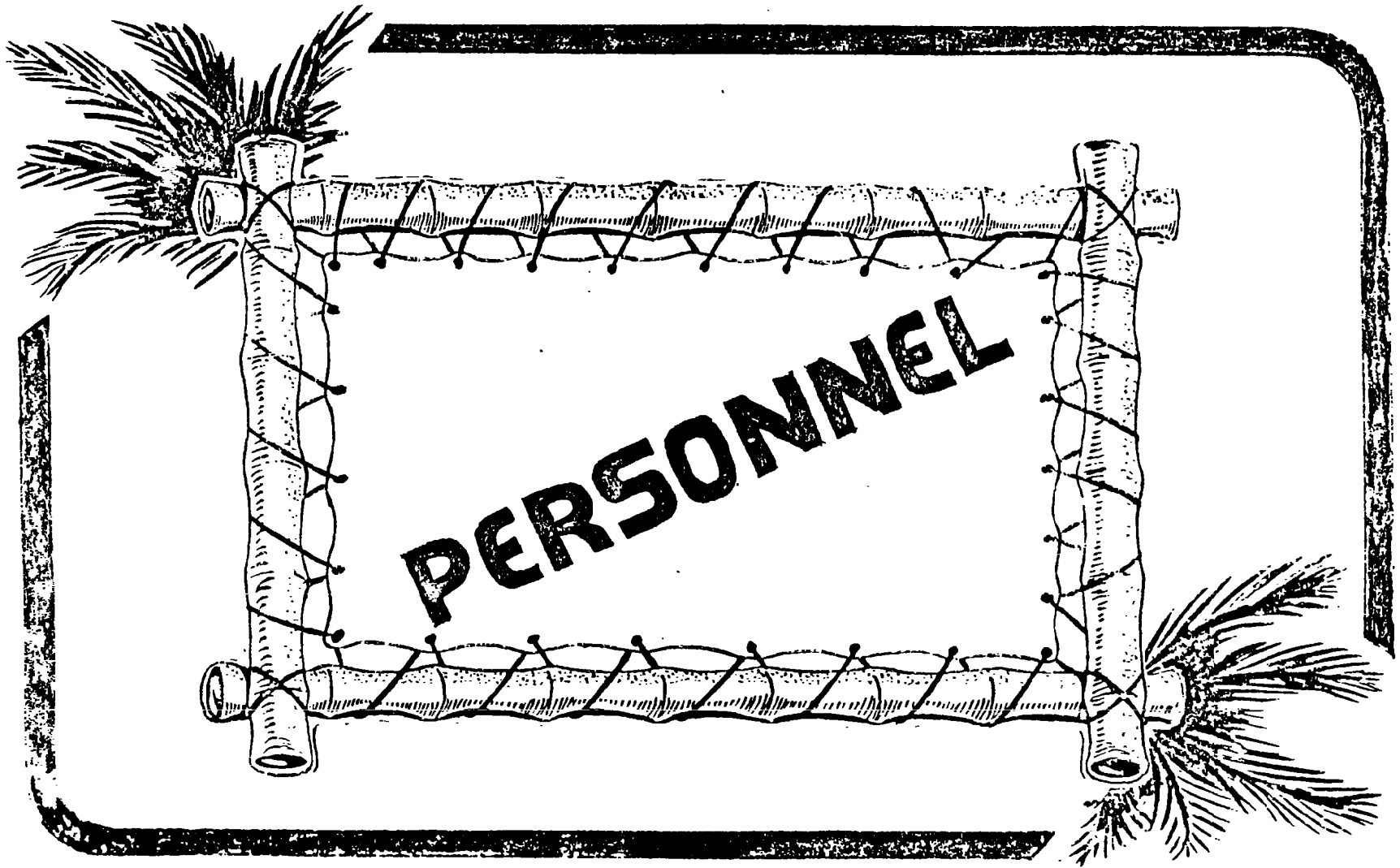
••• AIR-GROUND COMMUNICATIONS FOR IVY •••
VHF CHANNELS

CHANNEL	FREQ	DESCRIPTION	F-84 SAMPLERS	B-29 CONTROL AIRCRAFT				KB-29 TANKERS	B-36 DROPPERS AND CONTROL	B-29 & C-54 PHOTO	B-29 CANISTER DROPPERS	SB-29 B SAR A/C	WB-29 WX A/C	B-36 B B-47 B ASINAR	B 50	COMMAND SHIP
				SET NO 1	SET NO 2	SET NO 3	SET NO 4									
A		PRIMARY GCI SAMPLER CONTROL PRIMARY BLAST & GUST EFFECTS GCI CONTROL	PRIMARY GCI TO COMMAND SHIP	MONITOR FLIGHT PROGRESS OF SAMPLER AIRCRAFT TO AND FROM AWJALEM	(X)	(X)	SECONDARY GCI TO COMMAND SHIP	(X)	(K)	SECONDARY TO GCI COMMAND SHIP	(K)	(K)	PRIMARY TO COMMAND SHIP	(X)	PRIMARY TO COMMAND SHIP	
B	126.18 MC	CONTROL TOWERS SECONDARY GCI SAMPLER CONTROL PRIMARY CANISTER DROPPERS AND TANKER GCI CONTROL	SECONDARY GCI TO COMMAND SHIP MONITOR FLIGHT FROM AWJALEM TO SAMPLING AREA (OUTBOUND)	CONTROL TOWERS				PRIMARY GCI TO COMMAND SHIP	CONTROL TOWERS	CONTROL TOWERS	CONTROL TOWERS	CONTROL TOWERS	CONTROL TOWERS	SECONDARY GCI TO COMMAND SHIP	CONTROL TOWERS	CONTROL TOWERS
C	137.88 MC	VHF OF AWJALEM B COMMAND SHIP B 50 SEARCHING AIRWAYS	SAME FOR ALL AIRCRAFT													PRIMARY TO GCI COMMAND SHIP
D	121.5 MC	EMERGENCY VHF OF AWJALEM AND COMMAND SHIP B 50 SIGNAL (AWJALEM)	SAME FOR ALL AIRCRAFT													SECONDARY GCI TO COMMAND SHIP
E		PRIMARY AIR SAMPLING CONTROL	PRIMARY TO B-29 CONTROL AIRCRAFT SECONDARY TO B-36 CONTROL AIRCRAFT	PRIMARY TO SAMPLER, TANKER AND SAR AIRCRAFT				PRIMARY TO CONTROL AIRCRAFT	SECONDARY TO SAMPLER AIRCRAFT	(J)	(J)	PRIMARY TO CONTROL AIRCRAFT	(J)	(J)	(J)	(J)
F		SECONDARY AIR SAMPLING CONTROL	PRIMARY TO B-36 CONTROL AIRCRAFT SECONDARY TO B-29 CONTROL AIRCRAFT	SECONDARY TO SAMPLER, TANKER AND SAR AIRCRAFT				SECONDARY TO CONTROL AIRCRAFT	PRIMARY TO SAMPLER AIRCRAFT	(J)	(J)	SECONDARY TO CONTROL AIRCRAFT				(K)
G	136.8 MC	PRIMARY AIR REFUELING	PRIMARY TO TANKERS	FOR MONITORING OF REFUELING OPERATIONS				PRIMARY TO REFUELING SAMPLERS	(J)	STANDARD GCA					(X)	
H	134.1 MC	SECONDARY AIR REFUELING	SECONDARY TO TANKERS	FOR MONITORING OF REFUELING OPERATIONS				SECONDARY TO REFUELING SAMPLERS		STANDARD GCA						
J		AEC LIAISON		TO AEC ON COMMAND SHIP				PRIMARY TO GCI COMMAND SHIP AND CONTROL AIRCRAFT	PRIMARY TO GCI COMMAND SHIP	PRIMARY TO GCI COMMAND SHIP	PRIMARY TO GCI COMMAND SHIP	PRIMARY TO GCI COMMAND SHIP	PRIMARY TO GCI COMMAND SHIP	PRIMARY TO GCI COMMAND SHIP	PRIMARY TO GCI COMMAND SHIP	PRIMARY TO GCI COMMAND SHIP
K		PRIMARY AIR SEA RESCUE AND PHOTO AIRCRAFT GCI CONTROL						PRIMARY GCI TO COMMAND SHIP	PRIMARY GCI TO COMMAND SHIP	PRIMARY GCI TO COMMAND SHIP	PRIMARY GCI TO COMMAND SHIP	PRIMARY GCI TO COMMAND SHIP	PRIMARY GCI TO COMMAND SHIP	PRIMARY GCI TO COMMAND SHIP	PRIMARY GCI TO COMMAND SHIP	PRIMARY GCI TO COMMAND SHIP
X		PRIMARY COMMAND AND DROPPERS CONTROL		PRIMARY TO GCI COMMAND SHIP AND B-36 CONTROL AIRCRAFT				PRIMARY GCI TO COMMAND SHIP	PRIMARY GCI TO COMMAND SHIP	PRIMARY GCI TO COMMAND SHIP	PRIMARY GCI TO COMMAND SHIP	PRIMARY GCI TO COMMAND SHIP	PRIMARY GCI TO COMMAND SHIP	PRIMARY GCI TO COMMAND SHIP	PRIMARY GCI TO COMMAND SHIP	PRIMARY GCI TO COMMAND SHIP

H-F CHANNELS

1		TO GCI COMMAND SHIP	TO GCI COMMAND SHIP	TO GCI COMMAND SHIP	TO GCI COMMAND SHIP	TO GCI COMMAND SHIP	TO GCI COMMAND SHIP	TO GCI COMMAND SHIP	TO GCI COMMAND SHIP	TO GCI COMMAND SHIP	TO GCI COMMAND SHIP	TO GCI COMMAND SHIP	TO GCI COMMAND SHIP	TO GCI COMMAND SHIP	TO GCI COMMAND SHIP
2		TO GCI COMMAND SHIP	TO GCI COMMAND SHIP	TO GCI COMMAND SHIP	TO GCI COMMAND SHIP	TO GCI COMMAND SHIP	TO GCI COMMAND SHIP	TO GCI COMMAND SHIP	TO GCI COMMAND SHIP	TO GCI COMMAND SHIP	TO GCI COMMAND SHIP	TO GCI COMMAND SHIP	TO GCI COMMAND SHIP	TO GCI COMMAND SHIP	TO GCI COMMAND SHIP
3		AEC LIAISON	TO AEC ON COMMAND SHIP	TO AEC ON COMMAND SHIP	TO AEC ON COMMAND SHIP	TO AEC ON COMMAND SHIP	TO AEC ON COMMAND SHIP	TO AEC ON COMMAND SHIP	TO AEC ON COMMAND SHIP	TO AEC ON COMMAND SHIP	TO AEC ON COMMAND SHIP	TO AEC ON COMMAND SHIP	TO AEC ON COMMAND SHIP	TO AEC ON COMMAND SHIP	TO AEC ON COMMAND SHIP
4		RESCUE AND PHOTO AIRCRAFT GCI CONTROL						PRIMARY GCI TO COMMAND SHIP	PRIMARY GCI TO COMMAND SHIP	PRIMARY GCI TO COMMAND SHIP	PRIMARY GCI TO COMMAND SHIP	PRIMARY GCI TO COMMAND SHIP	PRIMARY GCI TO COMMAND SHIP	PRIMARY GCI TO COMMAND SHIP	PRIMARY GCI TO COMMAND SHIP
5	8280 KC	TO AWJALEM B COMMAND SHIP	SAME FOR ALL AIRCRAFT												
6		TO AWJALEM B COMMAND SHIP	AS REQUIRED FOR ALL AIRCRAFT												

BEST AVAILABLE COPY



PERSONNEL

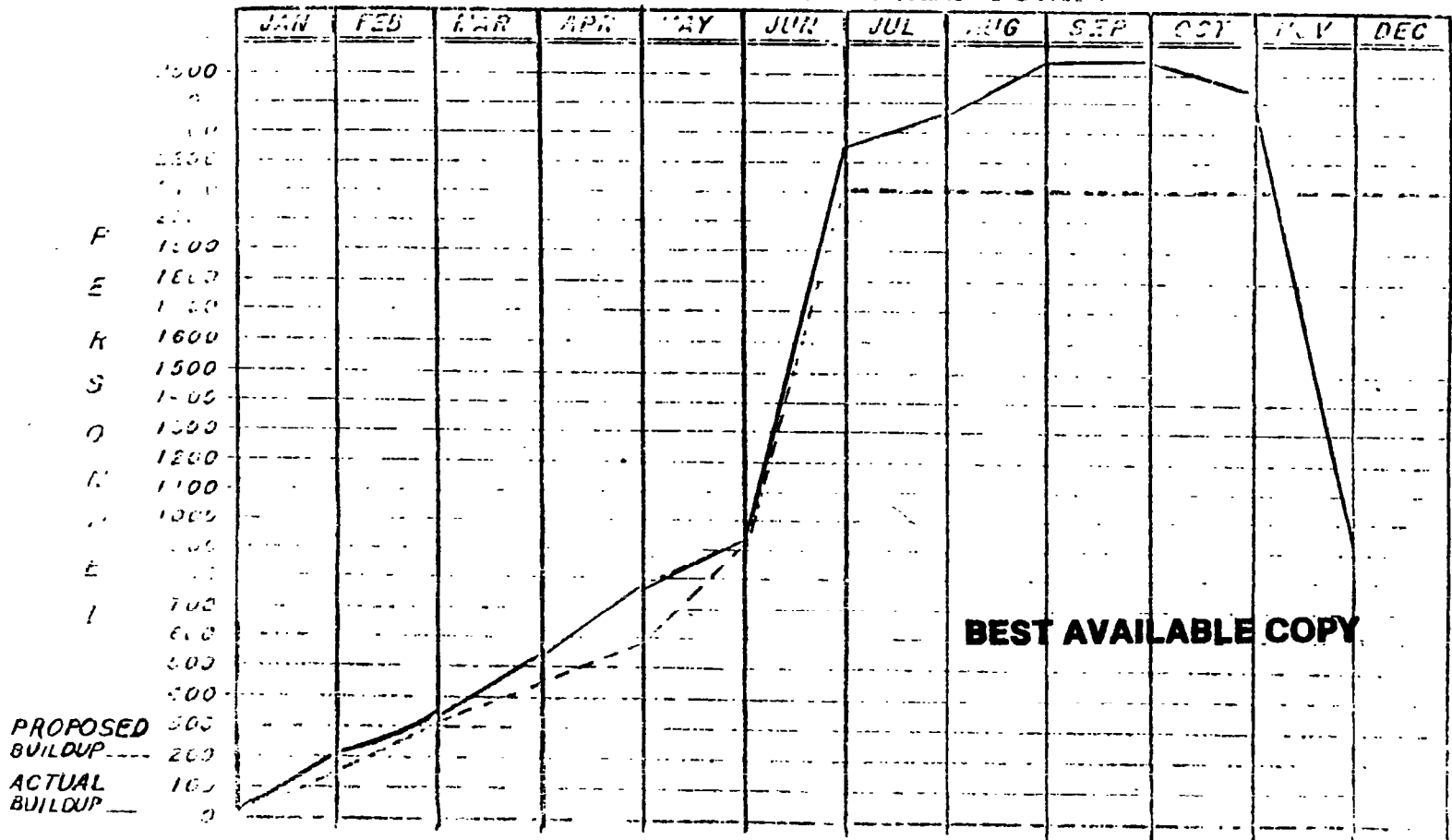
[REDACTED]

PERSONNEL PHASING TG 132.4

	OFF	AMN	TOTAL	JAN	FEB	MAR	APR	MAY	JUN	JUL	AUG	SEP	OCT	NOV	EXC
HEADQUARTERS															
TASK GROUP 132.4	47	95													
TEST SUPPORT UNIT 132.4.1	62	807													
TEST AIRCRAFT UNIT 132.4.2	159	584													
TEST SERVICES UNIT 132.4.3	138	650													
TOTAL	406	2136													
G. TOTAL	2,542														
				NOTE. * INCLUDES 82 ADD NAVAL AUG ** INCLUDES 41 " FOR PONY EXPRESS & PHOTO											



TASK GROUP 152.4 PERSONNEL SUMMARY



	JAN	FEB	MAR	APR	MAY	JUN	JUL	AUG	SEP	OCT	NOV	DEC
OFFICERS	41	57	92	98	101	334	354	380	385	380	56	
AIRMEN	167	258	454	689	819	1914	1996	2160	2160	2059	859	
TOTAL	208	315	546	787	920	2248	2350	2540	2545	2439	915	