

In house Jailout.

402664

115
11501

TR-4199

H-8

F-23, B-186

R

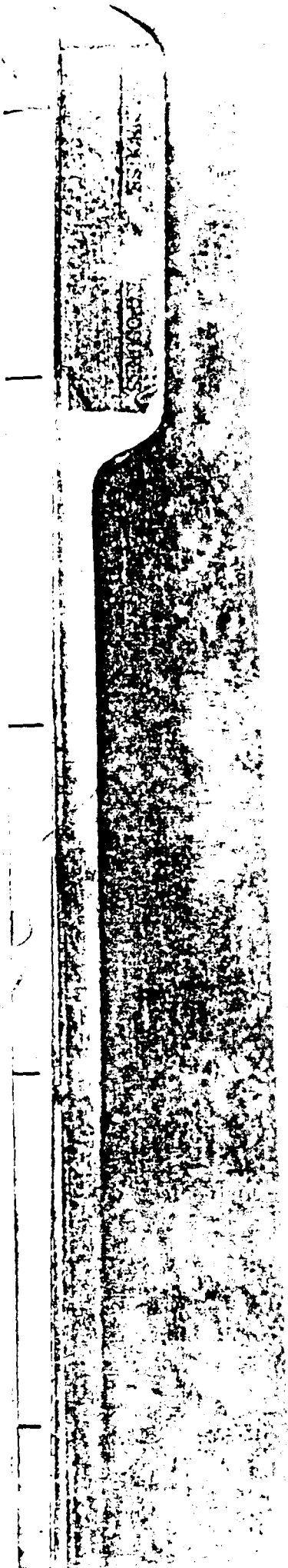
VERIFIED UNCLASSIFIED

For Review

SEP 27 1979

THIS FOLDER
 contains
Classified
Documents

Documents must not be left unattended or unauthorized personnel may have access to them. When not in use, they must be stored in an approved file or safe. You are responsible for these Documents at all times while they are assigned to you.



Milliroentgens
Total Exposure

Name:

7
175
1,085
7
7
70
70
180
175
70
7
180
7
275
70
220
160
3,417
1,561
2,371
3,392
147
112
70
2,436
469
810

Records
Milliroentgens
1,085
63
1,085
1,085

Classification changed to
by authority of the U. S. Atomic Energy Commission,
Per [Signature] [Date]
By [Signature] [Date]
(Signature of person making the change, and date)

[Handwritten scribbles]

<u>Name:</u>	<u>PRIVACY ACT MATERIAL REMOVED</u>	<u>Total Exposure</u>
		3,632
		56
		224
		408
		1,655
		756
		1,255
		2,657
		1,769
		298
		1,133
		286
		63
		1,022
		5,370
		1,554
		2,923
		3,990
		1,554
		2,688
		2,688
		3,990
		2,688
		3,990
		2,688
		1,554
		1,554

Greenhouse Exposures

COPY
-3-

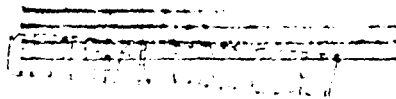
Name:

Total Exposure

PRIVACY ACT MATERIAL REMOVED

3,990
3,990
1,554
1,554
3,990
3,990
3,990
3,990
1,491
3,990
3,990
4,140
3,640
4,065
2,993
697
1,540
3,990
3,794
3,990
3,990
4,779
3,374
1,085
1,470
2,905
1,554

PRIVACY ACT MATERIAL REMOVED



Name:

PRIVACY ACT MATERIAL REMOVED

Total Exposure

- 3,990
- 3,338
- 3,990
- 1,526
- 3,388
- 3,388
- 3,990
- 4,710
- 3,990
- 1,554
- 3,990
- 3,990
- 3,990
- 4,070
- 3,150
- 3,388
- 3,990
- 3,990
- 3,990
- 2,870
- 112
- 77
- 4,263
- 77
- 760
- 420

~~CONFIDENTIAL ONLY~~

PRIVACY ACT MATERIAL REMOVED

Greenhouse Exposures

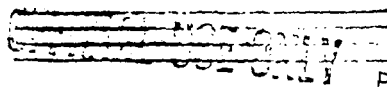
COPY

-5-

Name:

Total Exposure

PRIVACY ACT MATERIAL REMOVED	4,944
	5,310
	3,069
	2,487
	3,700
	6,420
	2,474
	6,056
	8,205
	1,220
	434
	2,215
	434
	1,022
	1,559
	168
	1,022
	704
	861
	2,235
	123
	1,040
	112
	98
	4,966
	8,463
	4,569



PRIVACY ACT MATERIAL REMOVED

Name

Total Exposures

PRIVACY ACT MATERIAL REMOVED

9,210

7,280

4,644

2,841

3,990

6,700

3,395

1,040

9,830

6,570

7,064

8,955

3,854

1,554

1,745

1,085

1,639

1,484

1,404

900

640

5,313

6,365

307

5,274

405

~~CONFIDENTIAL~~
~~INTERNAL USE ONLY~~

PRIVACY ACT MATERIAL REMOVED

Greenhouse Exposures

GOPY
-7-

Name:

PRIVACY ACT MATERIAL REMOVED

Total Exposures

5,407
102
5,083

367
3,749
4,344
3,639
7,775
330

702
5,798
407
92
235
3,794
645
5,334
112
2,674

8,230
625
3,668
2,436
2,710

~~CONFIDENTIAL~~

PRIVACY ACT MATERIAL REMOVED

Name

PRIVACY ACT MATERIAL REMOVED

Total Exposures

182
 2,674
 2,440
 112
 1,554
 2,520
 289
 2,954
 2,660
 1,554
 1,554
 1,554
 7
 2,660
 2,574
 3,388

 2,489
 4,594
 1,324
 4,352
 2,423
 1,554
 162
 2,273
 2,394

~~CONFIDENTIAL~~

PRIVACY ACT MATERIAL REMOVED

<u>Name</u>	<u>PRIVACY ACT MATERIAL REMOVED</u>	<u>Total Exposures</u>
		3,104
		4,861
		2,567
		1,620
		2,472
		5,286
		3,844
		5,071
		1,554
		1,270
		1,554
		1,854
		1,732
		2,544
		1,148
		7
		84
		1,736
		1,547
		602
		602
		147
		3,721
		3,396
		1,736
		1,554

~~CONFIDENTIAL~~

PRIVACY ACT MATERIAL REMOVED

Greenhouse Exposures

COPY
-10-

PRIVACY ACT MATERIAL REMOVED

Name

Total Exposures

1,148

434

728

10,070

2,150

8,540

3,468

7,706

3,574

5.35

1,924

4,599

8,425

3,990

840

3,990

5,650

2,567

4,355

522

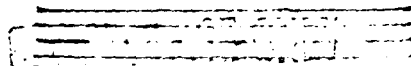
6,140

1,647

1,435

1,211

4,134



PRIVACY ACT MATERIAL REMOVED

Name:

Total Exposure

2,240

512

5,515

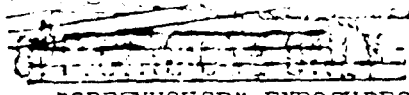
1,323

2,506

1,769

~~CONFIDENTIAL~~
~~CONFIDENTIAL~~

19/1/56



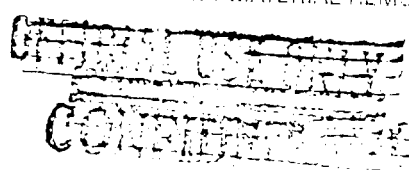
"GREENHOUSE" EXPOSURES

PRIVACY ACT MATERIAL REMOVED

<u>FB</u>	<u>Ekard</u>	<u>70% Ekard</u>	<u>Total</u>
6.08	5.70	3.99	10.07
5.84	5.70	3.99	9.83
5.22	5.70	3.99	9.21
4.97	5.70	3.99	8.96
4.55	5.70	3.99	8.54
5.47	4.28	3.00	8.47
4.44	5.70	3.99	8.43
4.24	5.70	3.99	8.23
4.22	5.70	3.99	8.21
3.79	5.70	3.99	7.78
4.50	4.58	3.21	7.71
3.29	5.70	3.99	7.28
5.71	2.22	1.55	7.26
5.51	2.22	1.55	7.06
3.75	4.50	3.15	6.90
2.90	5.70	3.99	6.89
5.15	2.22	1.55	6.70
2.58	5.70	3.99	6.57
2.43	5.70	3.99	6.42
2.38	5.70	3.99	6.37
2.15	5.70	3.99	6.14
2.26	5.42	3.79	6.05
1.81	5.70	3.99	5.80
1.66	5.70	3.99	5.65

PRIVACY ACT MATERIAL REMOVED

CAUTION



~~CONFIDENTIAL~~
CONFIDENTIAL USE ONLY

PRIVACY ACT MATERIAL REMOVED

	<u>FB</u>	<u>Excd</u>	<u>70% bkrd</u>	<u>Total</u>
	1.53	5.70	3.99	5.52
	2.73	3.82	2.67	5.40
	1.54	5.42	3.79	5.33
	1.93	4.84	3.39	5.32
	1.32	5.70	3.99	5.31
	2.08	4.58	3.21	5.29
	2.60	3.82	2.67	5.27
	1.70	4.84	3.39	5.08
	1.87	4.58	3.21	5.07
	4.09	1.28	.88	4.97
	2.27	3.82	2.67	4.94
	1.66	4.58	3.21	4.87
	1.41	4.82	3.37	4.78
	.72	5.70	3.99	4.71
	.85	5.42	3.79	4.64
	3.89	1.02	.71	4.60
	2.20	3.42	2.39	4.59
	3.02	2.22	1.55	4.57
	.37	5.70	3.99	4.36
	.67	5.26	3.68	4.35
	1.67	3.82	2.67	4.34
	.88	4.84	3.39	4.27
	.15	5.70	3.99	4.14
	.34	5.42	3.79	4.13
	.08	5.70	3.99	4.07
		5.70	3.99	3.99

PRIVACY ACT MATERIAL REMOVED

~~CONFIDENTIAL~~
CONFIDENTIAL USE ONLY

CAUTION
~~CONFIDENTIAL~~
CONFIDENTIAL USE ONLY

PRIVACY ACT MATERIAL REMOVED	FB	Excd	70% Excd	Total
		5.70	3.99	3.99
		5.70	3.99	3.99
		5.70	3.99	3.99
		5.70	3.99	3.99
		5.70	3.99	3.99
		5.70	3.99	3.99
		5.70	3.99	3.99
		5.70	3.99	3.99
		5.70	3.99	3.99
		5.70	3.99	3.99
		5.70	3.99	3.99
	.08	5.70	3.99	3.99
		5.70	3.99	3.99
		5.70	3.99	3.99
		5.70	3.99	3.99
		5.70	3.99	3.99
		5.70	3.99	3.99
		5.70	3.99	3.99
		5.70	3.99	3.99
		5.70	3.99	3.99
		5.70	3.99	3.99
		5.70	3.99	3.99
		5.70	3.99	3.99
		5.70	3.99	3.99
		5.70	3.99	3.99
		5.70	3.99	3.99
		4.84	3.39	3.39

PRIVACY ACT MATERIAL REMOVED

~~CONFIDENTIAL~~ ONLY

CONFIDENTIAL

This document contains information affecting the National Defense of the United States within the meaning of the Espionage Laws, Title 18, United States Code, Sections 793 and 794, and the transmission or revelation of its contents in any manner to an unauthorized person is prohibited by law.

CAUTION

PRIVACY ACT MATERIAL REMOVED

<u>FB</u>	<u>Blind</u>	<u>70% Blind</u>	<u>Total</u>
	5.70	3.99	3.99
	5.70	3.99	3.99
.06	5.42	3.79	3.85
2.29	2.22	1.55	3.84
	5.42	3.79	3.79
	5.42	3.79	3.79
1.08	3.82	2.67	3.75
2.19	2.22	1.55	3.74
.52	4.58	3.21	3.73
2.15	2.22	1.55	3.70
.28	4.84	3.39	3.67
	5.20	3.65	3.65
.24	4.84	3.39	3.63
2.86	1.02	.71	3.57
1.91	2.22	1.55	3.46
.05	4.81	3.36	3.41
.19	4.58	3.21	3.40
	4.85	3.40	3.40
	4.84	3.39	3.39
	4.84	3.39	3.39
	4.84	3.39	3.39
	4.84	3.39	3.39
	4.84	3.39	3.39
	4.82	3.37	3.37
	4.50	3.15	3.15
1.55	2.22	1.55	3.10
.40	3.82	2.67	3.07

PRIVACY ACT MATERIAL REMOVED

CAUTION
 This document contains information affecting the
 National Defense of the United States within the
 meaning of the Espionage Laws, Title 18, U.S.C.,
 Sections 793 and 794, and the Espionage Laws,
 Title 50, U.S.C., Sections 81 and 83, and the
 transmission or revelation of its contents in any
 manner to an unauthorized person is prohibited by
 law.

"Greenhouse" Exposures (Continued)

PRIVACY ACT MATERIAL REMOVED	<u>FB</u>	<u>Board</u>	<u>705 Board</u>	<u>Total</u>
		4.28	3.00	3.00
		4.22	2.95	2.95
.24		3.84	2.69	2.93
		4.15	2.91	2.91
.21		3.80	2.66	2.87
1.46		1.98	1.39	2.85
.05		3.80	2.66	2.71
		3.84	2.69	2.69
		3.84	2.69	2.69
		3.84	2.69	2.69
		3.84	2.69	2.69
		3.82	2.67	2.67
		3.82	2.67	2.67
		3.48	2.66	2.66
		3.48	2.66	2.66
.06		3.71	2.60	2.66
1.02		2.21	1.55	2.57
1.02		2.21	1.55	2.57
.11		3.52	2.46	2.57
.99		2.22	1.55	2.54
		3.60	2.52	2.52
		3.58	2.51	2.51
.31		3.12	2.18	2.49
.93		2.22	1.55	2.48
.92		2.22	1.55	2.47
.92		2.22	1.55	2.47
		3.43	2.44	2.44

CAUTION
 This document contains information that is exempt from public release under the Privacy Act. It is to be controlled, stored, transmitted, and disposed of in accordance with the Privacy Act. If you are not an authorized recipient, you should not disseminate, distribute, or copy this information. If you have received this document in error, please notify the sender immediately. This document is the property of the FBI and is loaned to your agency; it and its contents are not to be distributed outside your agency.

PRIVACY ACT MATERIAL REMOVED

Greenhouse" Exposures (Continued)

PRIVACY ACT MATERIAL REMOVED	FB	Exed	70% Exed	Total
		3.48	2.44	2.44
		3.48	2.44	2.44
		3.47	2.43	2.43
	.23	3.14	2.20	2.43
		3.42	2.39	2.39
	.07	3.29	2.30	2.37
	.08	3.14	2.20	2.28
		3.20	2.24	2.24
	.74	2.14	1.50	2.24
	1.88	.49	.34	2.22
	.82	1.90	1.33	2.15
	1.00	1.32	.92	1.92
	.42	1.90	1.33	1.75
	.22	2.22	1.55	1.77
	.30	2.22	1.55	1.85
		2.38	1.74	1.74
		2.38	1.74	1.74
	.19	2.21	1.55	1.74
	.15	2.10	1.47	1.62
	.37	1.82	1.27	1.64
	.88	1.10	.77	1.65
	.10	2.21	1.55	1.65
	.51	1.64	1.15	1.66
	.95	.87	.61	1.56
		2.22	1.55	1.55
PRIVACY ACT MATERIAL REMOVED		2.22	1.55	1.55
		2.22	1.55	1.55

~~CONFIDENTIAL~~

~~CONFIDENTIAL~~

This document contains information affecting the national defense which in its transmission or disclosure could result in the identification of confidential sources and methods of the intelligence community. Its transmission or disclosure is prohibited.

<u>FB</u>	<u>Excd</u>	<u>705 Excd</u>	<u>Total</u>
	2.22	1.55	1.55
	2.22	1.55	1.55
	2.22	1.55	1.55
	2.21	1.55	1.55
	2.22	1.55	1.55
	2.22	1.55	1.55
	2.22	1.55	1.55
	2.22	1.55	1.55
	2.22	1.55	1.55
	2.22	1.55	1.55
	2.22	1.55	1.55
	2.22	1.55	1.55
	2.22	1.55	1.55
	2.22	1.55	1.55
	2.22	1.55	1.55
	2.22	1.55	1.55
	2.20	1.54	1.54
	2.18	1.53	1.53
	2.13	1.49	1.49
.21	1.82	1.27	1.48
	2.10	1.47	1.47
	2.05	1.44	1.44
.13	1.82	1.27	1.40
1.21	.17	.12	1.33
	1.89	1.32	1.32
.43	1.20	.84	1.27
.87	.55	.30	1.26

PRIVACY ACT MATERIAL REMOVED

PRIVACY ACT MATERIAL REMOVED

CAUTION

...ecting the
...ites in
...hibited

PRIVACY ACT MATERIAL REMOVED	FB	Exrd	70% Exrd	Total
	.88	.49	.34	1.22
		1.73	1.21	1.21
		1.61	1.15	1.15
		1.64	1.15	1.15
	.23	1.29	.90	1.13
		1.60	1.12	1.12
		1.55	1.09	1.09
		1.55	1.09	1.09
		1.55	1.09	1.09
	.73	.44	.31	1.04
		1.49	1.04	1.04
		1.46	1.02	1.02
		1.46	1.02	1.02
		1.46	1.02	1.02
	.36	.87	.61	.97
	.90			.90
	.12	1.07	.75	.87
		1.20	.84	.84
		1.15	.81	.81
	.18	.90	.63	.81
		1.09	.76	.76
		1.08	.76	.76
		1.04	.73	.73
	.60	.15	.11	.71
	.20	.71	.50	.70
	.64			.64
	.52	.15	.11	.63

PRIVACY ACT MATERIAL REMOVED

01
 FEDERAL BUREAU OF INVESTIGATION
 U.S. DEPARTMENT OF JUSTICE
 RECEIVED
 APR 15 1975
 FEDERAL BUREAU OF INVESTIGATION
 U.S. DEPARTMENT OF JUSTICE

PRIVACY ACT MATERIAL REMOVED

<u>FB</u>	<u>Word</u>	<u>708 Word</u>	<u>Total</u>
	.86	.60	.60
	.86	.60	.60
.10	.61	.43	.53
.18	.46	.33	.51
	.67	.47	.47
	.62	.43	.43
	.62	.43	.43
	.62	.43	.43
	.60	.42	.42
.30	.15	.11	.41
.40	.01	.01	.41
.24	.24	.17	.41
.36	.01	.01	.37
.23	.15	.11	.34
.30	.01	.01	.31
.24	.09	.06	.30
.16	.18	.13	.29
.10	.29	.18	.28
.13	.15	.11	.24
	.32	.22	.22
.04	.29	.18	.22
.07	.16	.11	.18
.08	.14	.10	.18
	.29	.18	.18
.08	.14	.10	.18
	.24	.17	.17

PRIVACY ACT MATERIAL REMOVED

~~OFFICIAL USE ONLY~~

This document

CAUTION

~~CONFIDENTIAL~~

...the ...
...the ...
...the ...

"Greenhouse" Exposures (Continued)

PRIVACY ACT MATERIAL REMOVED

<u>FB</u>	<u>Hard</u>	<u>70% Hard</u>	<u>Total</u>
	.14	.10	.17
.07			
	.16	.11	.16
.05			
	.21	.15	.25
	.21	.15	.25
.15			.15
	.17	.12	.12
	.18	.12	.12
	.16	.11	.11
	.16	.11	.11
	.16	.11	.11
	.16	.11	.11
	.16	.11	.11
.07	.06	.04	.11
.07	.04	.03	.10
	.14	.10	.10
.05	.06	.04	.09
	.12	.08	.03
	.11	.08	.08
	.11	.08	.08
	.10	.07	.07
	.10	.07	.07
	.10	.07	.07
	.10	.07	.07
	.10	.07	.07
	.08	.06	.06
	.09	.06	.06
	.01	.01	.01

PRIVACY ACT MATERIAL REMOVED

~~CONFIDENTIAL~~
~~CONFIDENTIAL~~

This document is CONFIDENTIAL

Greenhouse Exposures (Continued)

PRIVACY ACT MATERIAL REMOVED	FB	Hard	729	Total
		.01	.01	.01
		.01	.01	.01
		.01	.01	.01
		.01	.01	.01
		.01	.01	.01
		.01	.01	.01
		.01	.01	.01
				None
				None
				none
				None
				None
				None
				None
				None
				None

PRIVACY ACT MATERIAL REMOVED

CAUTION

This document contains information that is exempt from release under the Freedom of Information Act, 5 U.S.C. 552, and the Privacy Act, 5 U.S.C. 552a. It is to be controlled, stored, transmitted, disseminated, and disposed of in accordance with the applicable Federal laws.

~~_____~~
~~_____~~
~~_____~~

~~_____~~
~~_____~~
~~_____~~

LMR NOV - 5 1980



DEPARTMENT OF DEFENSE
 D FORCES SPECIAL WEAPONS PROJECT
 P. O. BOX 2610
 WASHINGTON, D. C.

ADDRESS REPLY TO:
 THE CHIEF, ARMED FORCES
 SPECIAL WEAPONS PROJECT

25 June 1951

UNCLASSIFIED

Classification changed to _____
 by authority of the U. S. Atomic Energy Commission.

Dr. Thomas N. White
 P. O. Box 1663
 Los Alamos, New Mexico

Per *R. Keenan* 12-1-58
 (Person authorizing change in classification) (Date)

By *Bertha Grant* 12-2-58
 (Signature of person making the change, and date)

Dear Tom:

I am inclosing a copy of the report of external radiation received by personnel on Parry Island as a result of fallout after Shot Item. This material will be contained in the Item Shot report compiled by General Cooney.

Similar data is available for the post-Dog Shot in General Cooney's official report of Dog Shot addressed to CTG 3.1. This report should be on file with 3.1 at Los Alamos. I do not have an additional copy but have extracted the pertinent data which is hereby included:

Extract of Annex A to Dog Shot of CTU 3.1.5:

"Decay curves indicated a possible component with a 7.7 hour half-life, followed by a $1/T^{1.2}$ law. Assuming a $1/T^{1.2}$ decay and no loss from leaching the maximum dosage expected can be calculated for future times.

Integrated dose to D / 30 days	2210 mr
D / 60 days	2705 mr

Film badges were given to a group of monitors in Task Unit 3.1.5 with instructions to wear these at all times except when on missions to other islands. These films were developed on D / 3 days and 10 hours.

Parry - mean 890 mr - range 1,400 to 560
 (maximum expected 1,190 mr)
 Japtan - mean 1,040 mr - range 1,600 to 825
 (maximum expected 1310 mr)

The maximum values for Japtan were estimated from survey meter readings which were about 10% greater than those on Parry Island. No comparable data is available from Eniwetok Island but survey meter readings made early in the fallout showed intensities about two-thirds of those on Parry Island.



It is evident that some reduction in the integrated dose was obtained by remaining inside except for essential outdoor activities."

Again let me compliment you on your fine work during Operation GREENHOUSE, and the exceptionally fine document entitled "Greenhouse Fallout".

Sincerely,



G. M. McDonnell
Major, MC
Medical Branch

Incls
GM/mlj

[REDACTED]

SUBJECT: External Radiation From Fall-Out Following Shot Item

TO: Commander, Task Unit 3.1.5

1. At approximately 1 1/2 hours and 23 minutes gamma ray recorder at RedSafe building, Parry Island showed a sharp rise followed by a drop to nearly the original reading. This "spike" is interpreted as the result of the passage of an active cloud from which little material fell out. Several other "spikes" of activity appeared during the next few minutes and were followed by a steady rise in activity due to fall-out until about 1/2 hours 45 minutes. Fallout started again at 1/2 hours and continued until 1/2 hours 45 minutes. From 1/2 16 hours the activity decayed according to a $T^{-1.2}$ law.

2. A continuous record of gamma ray intensities have been maintained. The attached curve shows the record connected to mr/hr at an outside location. Starting at 1/2 12 hours integrated doses out of doors have been determined using pocket ion chambers and photographic film badges. These have been placed at locations representative of conditions on Parry Island.

3. The integrated dose out of doors has been determined by numerical integration of the intensity curve in the early phases and from direct dose measurements in the later phases. The cumulative dose curve is attached.

4. An incomplete but reasonably representative survey of Eniwetok Island indicates that the situation there is almost identical with that on Parry. No data are available from Japan.

5. Assuming that decay continues according to a $T^{-1.2}$ law it is possible to predict total doses for future times. For

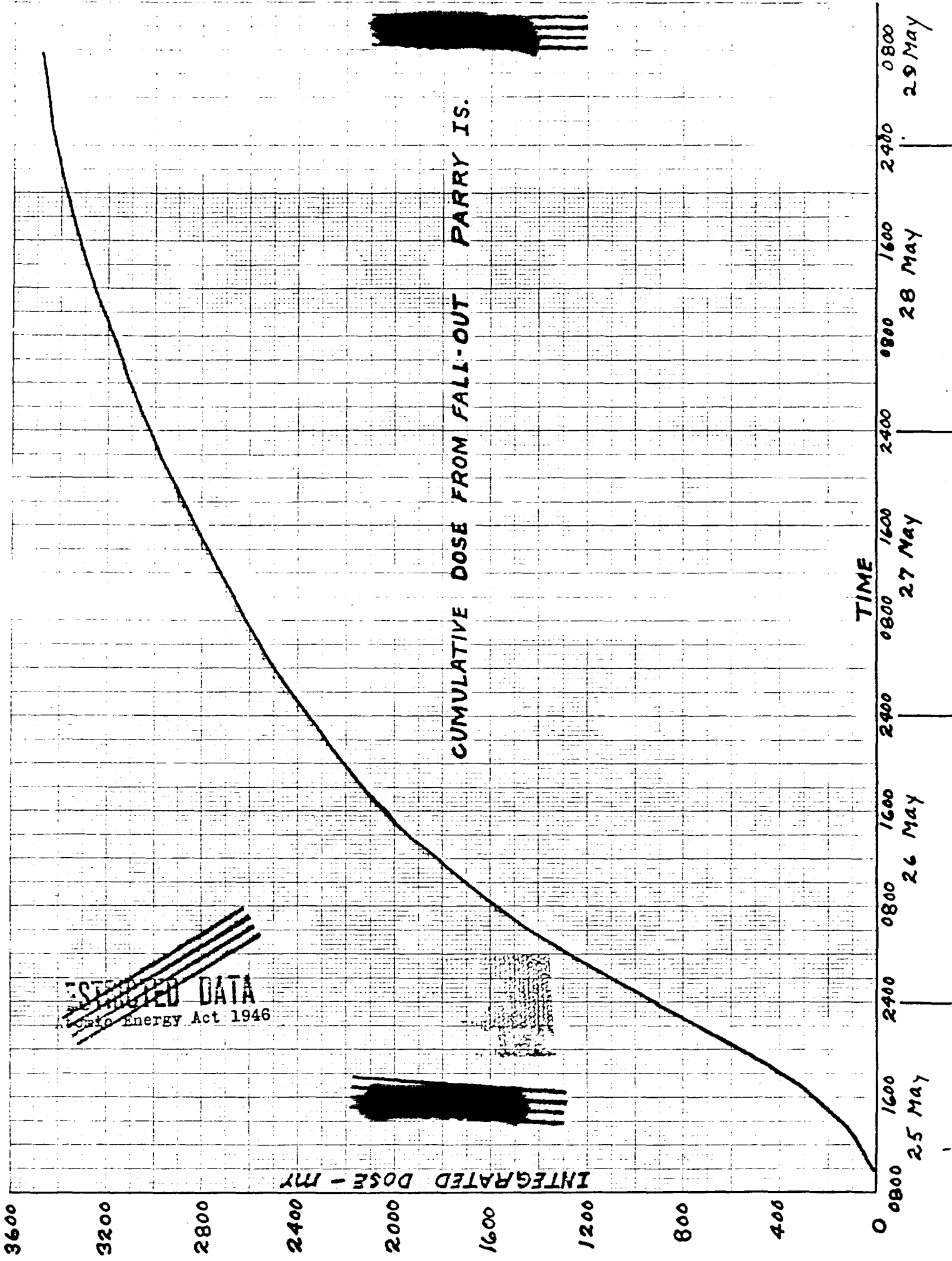
1/2 15 days total expected dose is 7,370 mr
1/2 30 days total expected dose is 9,520 mr

[REDACTED]

Atomic Energy Act 1946

[REDACTED]

Incl #1



~~RESTRICTED DATA~~
Atomic Energy Act 1946

[REDACTED]

[REDACTED]

[REDACTED]

Mr
1400

CUMULATIVE DOSE - PARRY

FIG 4

1200

1000

800

600

400

200

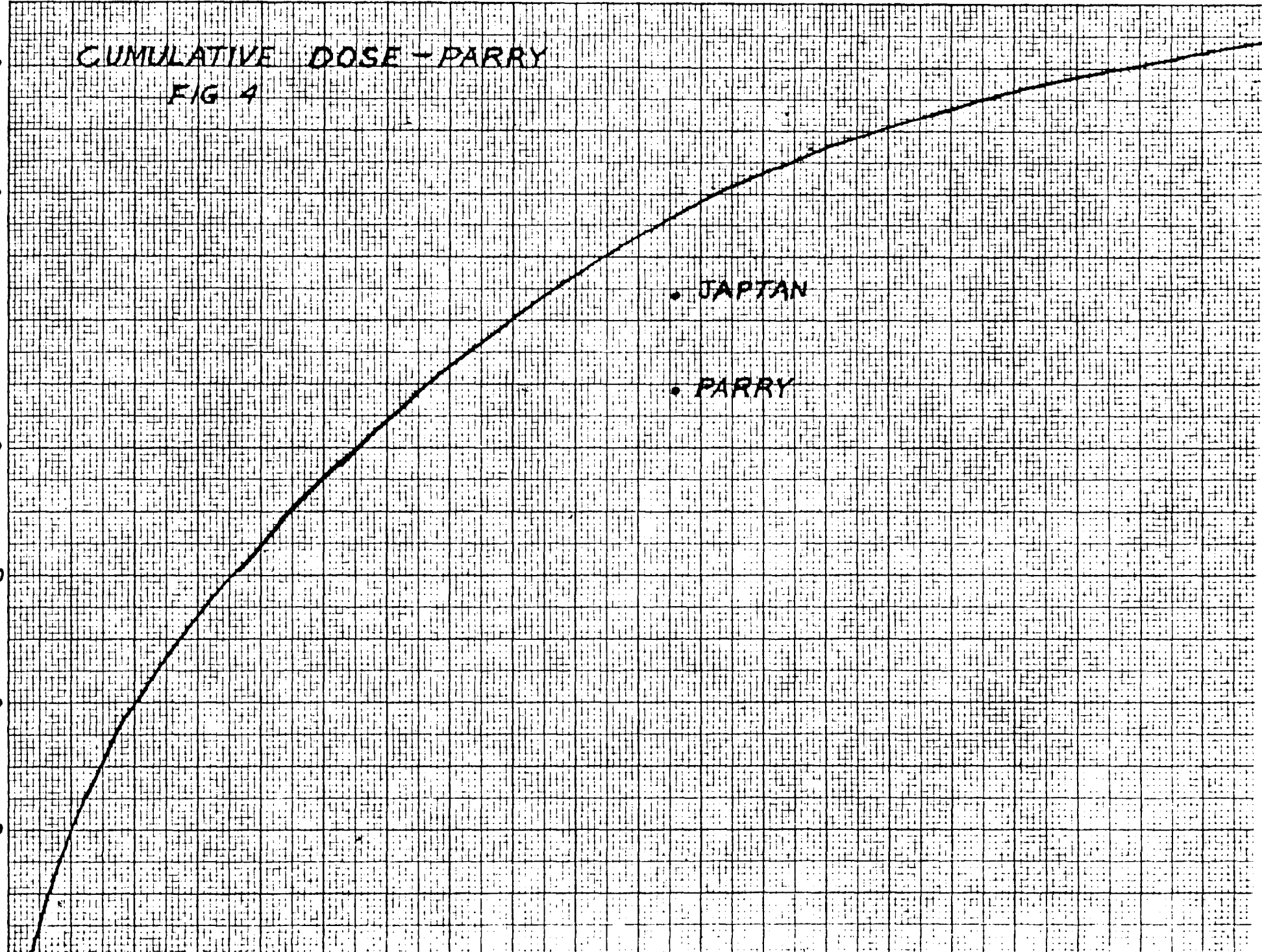
0600 2400 2400 2400 2400 2400 2400 2400 2400

• JAPTAN

• PARRY

VIATION
PROJECT 2010 14

15 16



SUBJECT: External Radiation Doses to 28 May 1951

TO: Commander, Task Unit 3.1.5

1. An analysis of all radiation exposures as shown by photographic film badges has been made as of 28 May 1951. The exposure data presented represent only that obtained in various missions connected with the test program.

2. Film badge data from 9,395 individuals shows an average exposure of 510 mr. Excluding 919 individuals showing exposures of 100 mr or less the average is 710 mr.

3. The distribution of the doses received is shown in the attached curve.

4. Data from Task Unit 3.1.5 was not complete at the time of this report and could not be analyzed.

PRIVACY ACT MATERIAL REMOVED

9-1	1	JTF S	Brig Gen	A	1	
9-2	2	Marine AFB	Lt Col	AF	1	
9-3	3	EMWD	Captain	N	1	
9-4	4	ANAF DC	Major	A	1	
9-5	5	LASL	Major	A	1	
9-6	6	PT of Pa	Lt	N	2	
9-7	7	Houston	Capt	A	2	
9-8	8	LASL	Capt	A	2	
9-9	9	Keeler AFB	1st Lt	AF	2	
9-10	10	A 1100 US	Capt	AF	1	
9-11	11	D. H. App	Lt Col	A	1	
9-12	12	Army Med	Lt Col	A	1	
9-13	13	ACC	Capt	AF	2	307 Bomb Wing MacDHL
9-14	14	ACC	Capt	A	2	
9-15	15	CHERLAB	LCdr	N	1	
9-16	16	USMC	Major	USMC	1	
9-17	17	1165 Pilot	Capt	AF	2	307 Wing, Connelly AFB, Maco Tex
9-18	18	NRDI	LCdr	N	1	
9-19	19	Sp. and let	Capt	USMC	2	
9-20	20	PTC, WAYS	Capt	AF	2	22 Bomb Wing MacDHL CALIF
9-21	21	San Diego	Lt	N	2	
9-22	22	ACC	LCdr	N	1	
9-23	23	Army Med	Capt	AF	2	SWC, KIRTLAND AFB N.M
9-24	24	ACC	Major	A	1	
9-25	25	ACC	Capt	A	2	
9-26	26	M. V. Sch	Capt MC	A	1	Ft San Houston
9-27	27	Co. MC	Co. MC	RUS	1	
9-28	28	Keeler AFB	Capt	AF	2	
9-29	29	"	1st Lt	AF	2	
9-30	30	"	1st Lt	AF	2	
9-31	31	"	1st Lt	AF	2	
9-32	32	T. I. Calif	Lt	N	2	
9-33	33	WRU	Mar PO	N	3	
9-34	34	R/S San Fran	DCC	N	3	
9-35	35	R/S San Fran	DCC	N	3	
9-36	36					
9-37	37					
9-38	38					
9-39	39					
9-40	40					
9-41	41	Abbeled	Lt Col	A	1	
9-42	42	Bethesda	Capt	USPHS	1	
9-43	43	U. of Iowa	Civ		1	
9-44	44	Eniwetok	1st Lt	A	2	
9-45	45	ETC	ETC	N	3	
9-46	46	Wash DC	Capt	A	2	
9-47	47	Wash DC	Capt	A	2	
9-48	48	Wash DC	Capt	A	2	
9-49	49	Wash DC	Capt	A	2	
9-50	50	Wash DC	Capt	A	2	
9-51	51	Wash DC	Capt	A	2	
9-52	52	Wash DC	Capt	A	2	
9-53	53	Wash DC	Capt	A	2	
9-54	54	Wash DC	Capt	A	2	
9-55	55	Wash DC	Capt	A	2	
9-56	56	Wash DC	Capt	A	2	
9-57	57	Wash DC	Capt	A	2	
9-58	58	Wash DC	Capt	A	2	
9-59	59	Wash DC	Capt	A	2	
9-60	60	Wash DC	Capt	A	2	
9-61	61	Wash DC	Capt	A	2	
9-62	62	Wash DC	Capt	A	2	
9-63	63	Wash DC	Capt	A	2	
9-64	64	Wash DC	Capt	A	2	
9-65	65	Wash DC	Capt	A	2	
9-66	66	Wash DC	Capt	A	2	
9-67	67	Wash DC	Capt	A	2	
9-68	68	Wash DC	Capt	A	2	
9-69	69	Wash DC	Capt	A	2	
9-70	70	Wash DC	Capt	A	2	
9-71	71	Wash DC	Capt	A	2	
9-72	72	Wash DC	Capt	A	2	
9-73	73	Wash DC	Capt	A	2	
9-74	74	Wash DC	Capt	A	2	
9-75	75	Wash DC	Capt	A	2	
9-76	76	Wash DC	Capt	A	2	
9-77	77	Wash DC	Capt	A	2	
9-78	78	Wash DC	Capt	A	2	
9-79	79	Wash DC	Capt	A	2	
9-80	80	Wash DC	Capt	A	2	
9-81	81	Wash DC	Capt	A	2	
9-82	82	Wash DC	Capt	A	2	
9-83	83	Wash DC	Capt	A	2	
9-84	84	Wash DC	Capt	A	2	
9-85	85	Wash DC	Capt	A	2	
9-86	86	Wash DC	Capt	A	2	
9-87	87	Wash DC	Capt	A	2	
9-88	88	Wash DC	Capt	A	2	
9-89	89	Wash DC	Capt	A	2	
9-90	90	Wash DC	Capt	A	2	
9-91	91	Wash DC	Capt	A	2	
9-92	92	Wash DC	Capt	A	2	
9-93	93	Wash DC	Capt	A	2	
9-94	94	Wash DC	Capt	A	2	
9-95	95	Wash DC	Capt	A	2	
9-96	96	Wash DC	Capt	A	2	
9-97	97	Wash DC	Capt	A	2	
9-98	98	Wash DC	Capt	A	2	
9-99	99	Wash DC	Capt	A	2	
9-100	100	Wash DC	Capt	A	2	

307 Bomb Wing MacDHL

307 Wing, Connelly AFB, Maco Tex

22 Bomb Wing MacDHL CALIF

SWC, KIRTLAND AFB N.M

Ft San Houston

Fort Bliss Tex

Sig Co, 11th Airborne Div Camp Campbell, Ky

PRIVACY ACT MATERIAL REMOVED

VERIFIED UNCLASSIFIED

SEP 27 1978

U.of C.	Drumhouse Ranger		Total
0	6.42	—	6.42
0	8.21	.08	8.29
0	8.45	1.07	9.52 *
<.01	9.21	3.58	12.79 *
.01	7.28	1.17	8.46
.01	6.57	—	6.58
.01	7.06	.80	7.86
<.01	8.96	—	8.96
.00	6.45	—	6.45
<hr/>			
	8.57		8.57
X	8.65		8.65

L FTG UTO
 Chesapeake Bay, Norfolk, Va
 Oe 3712 BMTS
 Lackland AFB, San Antonio, Tex

Greenhouse memo

PRIVACY ACT MATERIAL REMOVED

USA	Q
USN	Q
USA	Q
USAF	Q
USN	Q
USA	Q
USA	Q
USN	Q
USA	Q
USN	Q
USA	Not Q
USA	Q
USMC	Q
USN	Q
USAF	Not Q
USAF	Q
USAF	Not Q
USA	Q
USN	Q
USA	Q
USA	Q
USAF	Q
USN	Not Q
USA	Not Q
USN	Not Q
USMC	Not Q
USAF	Q
USAF	Q
USAF	Q (Not)
USN	Not Q
USPHS	Q

USA

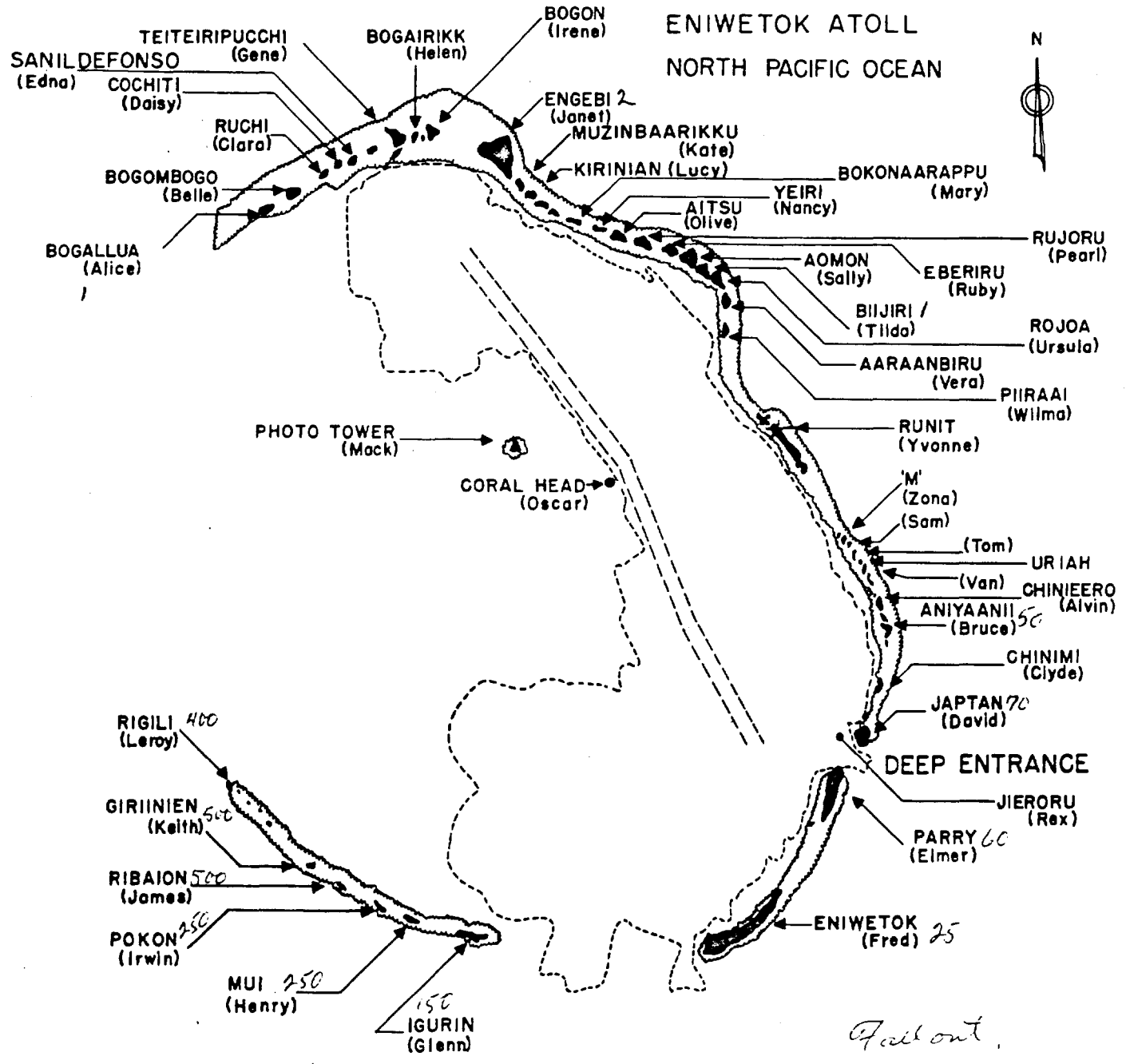
"Q"

7

- copy 2
- copy 6
- copy 4

ED

~~CONFIDENTIAL - SECURITY~~



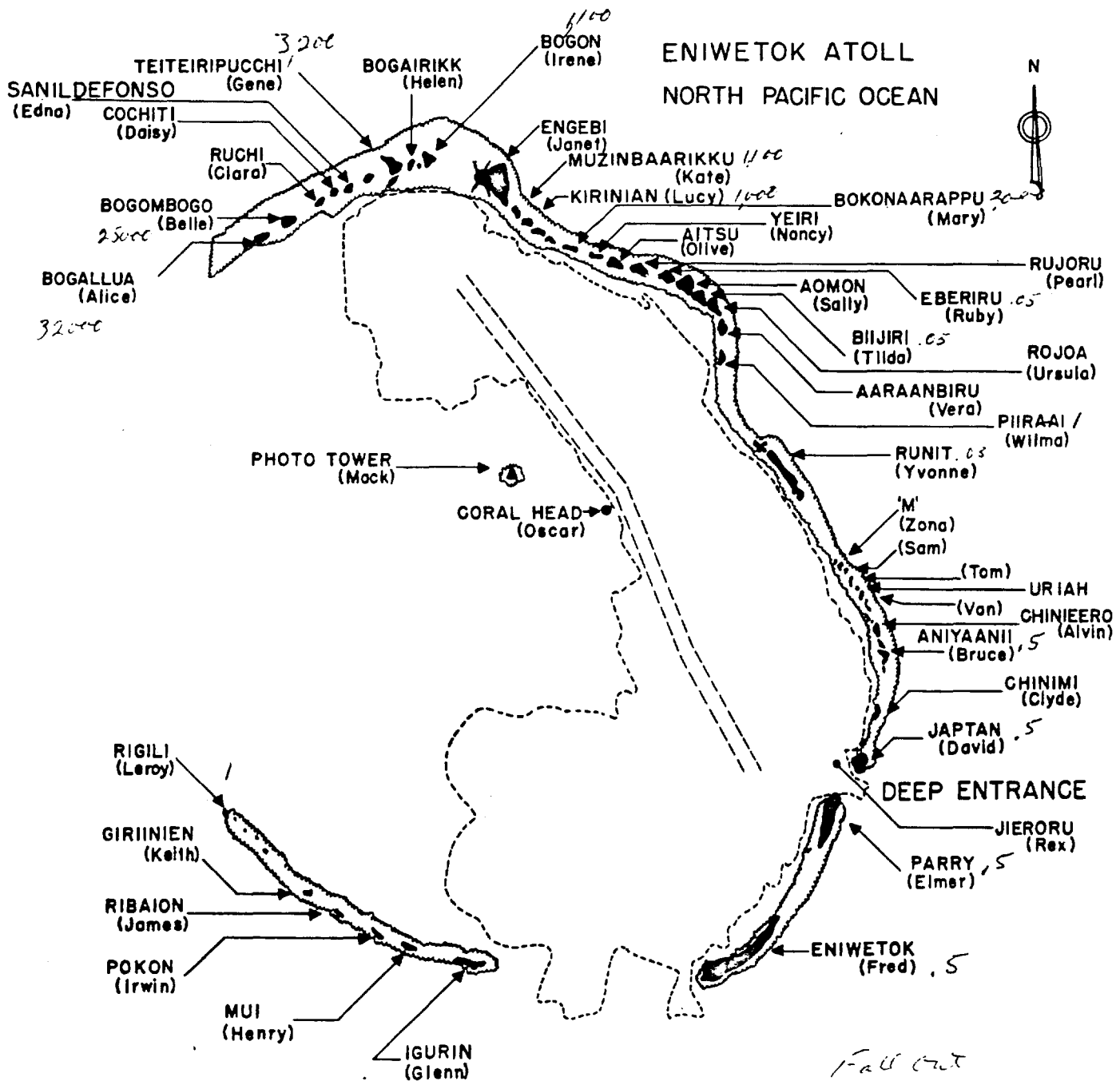
Fail out

14 + 750

W. H. Dyer
4/4/51

~~CONFIDENTIAL - SECURITY~~

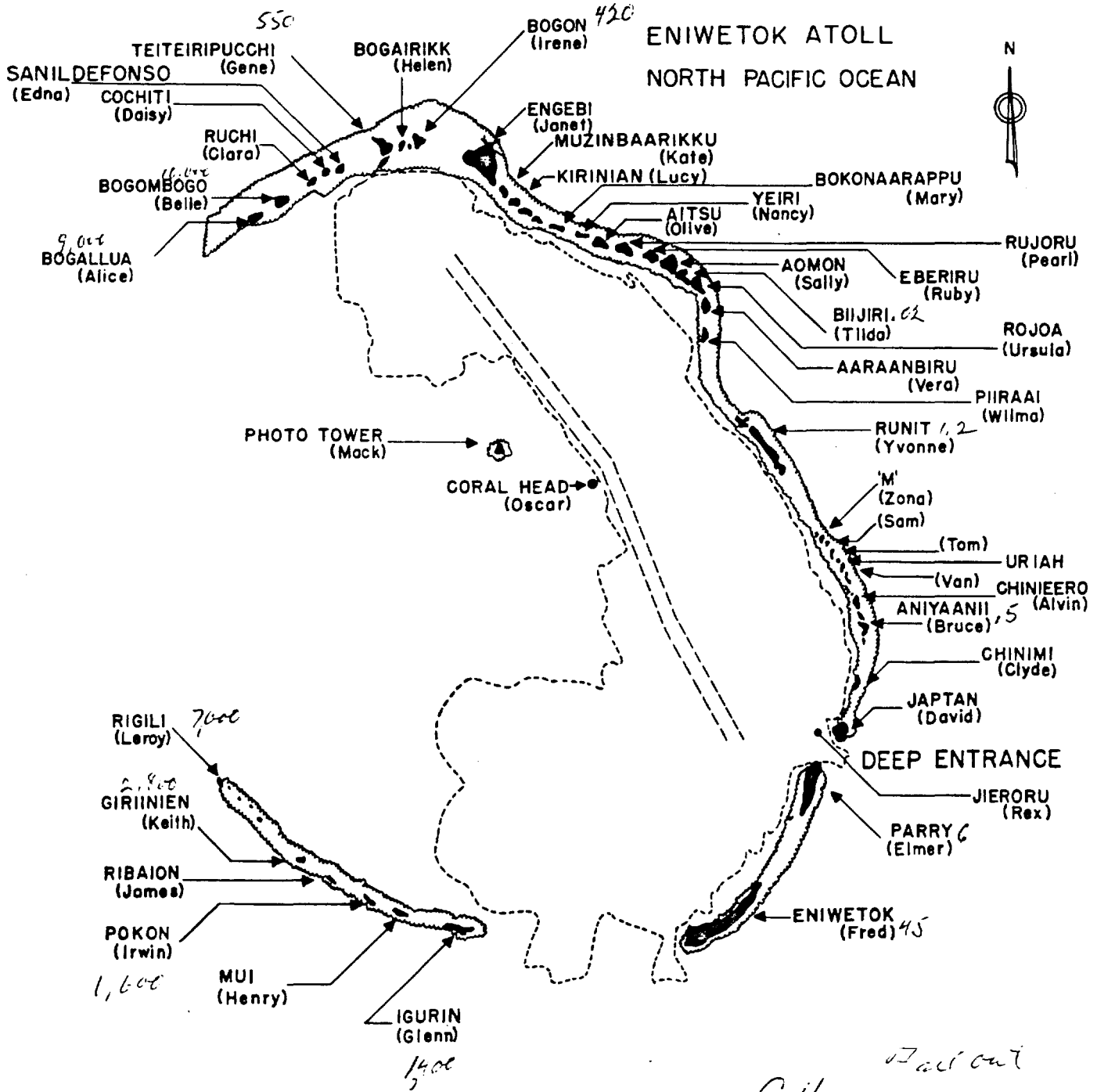
ENIWETOK ATOLL NORTH PACIFIC OCEAN



Fall out

GH
F 4/21/51

ENIWETOK ATOLL NORTH PACIFIC OCEAN



GH
Item 5/25/51
1000

~~CONFIDENTIAL~~
J - 9023

6 November 1951

Armed Forces Special Weapons Project
Washington, D. C.

Attention: Technical Library

Gentlemen:

In accordance with letter dated 28 September 1951, from Col. George F. Schlatter, Division of Military Application, to Dr. A. C. Graves, Los Alamos Scientific Laboratory, we are forwarding to you under separate cover the two boxes of cards bearing radiological exposure data from GREENHOUSE.

It is our understanding that you are prepared to accept these data for permanent retention.

Very truly yours,

ORIGINAL SIGNED BY LEO G. CHELIUS

Leo G. Chelius
Rad-Safety Group

LOC:jds

cc: Col. G. F. Schlatter
J-Division
Mail & Records
Rad-Safe File ←

~~CONFIDENTIAL~~

12300

920

~~FOR OFFICIAL USE ONLY~~
UNITED STATES
ATOMIC ENERGY COMMISSION
WASHINGTON 25, D. C.

IN REPLY REFER TO:

MATA:RLS

September 28, 1951

Dr. Alvin C. Graves
Los Alamos Scientific Laboratory
Los Alamos, New Mexico

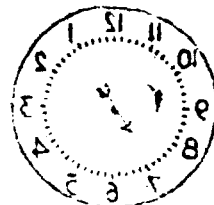
Dear Dr. Graves:

Reference is made to your letter of September 17, 1951 in which you indicated that you have no desire to retain the radiological exposure data from GREENHOUSE on a permanent basis. We have been informed by the Armed Forces Special Weapons Project that they will accept the data for permanent retention at any time you wish to make transmittal. They specified, however, that all the data should be shipped at the same time and to the attention of the Technical Library.

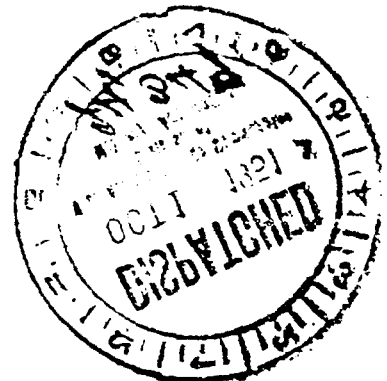
Sincerely yours,

George F. Schlatter
Colonel, USAF
Division of Military Application

... 12 3 1951



RECEIVED
1 - DIVISION
LOS ALAMOS SCI LAB



~~FOR OFFICIAL USE ONLY~~

Telecon Bob Patten, P-1, to J. Snumway

9/25/51

Reference memo prepared by Rad Safe re radiation dosages:
No individuals in the Alpha Measurements Unit for B-J (P-1) have received a dosage greater than that specified in the ref. letter. None have received any radiation of any consequence in their regular work. (We would have record of their exposures in Mon)

Only two members of Unit were at Greenhouse: _____ and _____

At Ranger: The above two men, plus _____

None of the other members of the Unit have participated in any of the test operations.

Drumhouse

Name	Org.	Org. Ldr	Proj.	Proj Ldr	Roster dit
T.U. 3.1.2	✓	No Com			
1. Med #1	✓	No Com			
2. Bu Med #1	✓	No Com			PRIVACY ACT MATERIAL REMOVED
3. Bu Med #1	✓	No Com			
4. Bu Med #1	✓	No Com			
5. Bu Med #1	✓	No Com			
6. Bu Med #1	✓	No Com			
7. Bu Med #1	✓	No Com			
8. Bu Med #1	✓	No Com			
9. Bu Med #1	✓	No Com			
10. Bu Med #1	✓	No Com			
11. Bu Med #1	✓	No Com			
12. Bu Med #1	✓	No Com			
13. Bu Med #1	✓	No Com			
14. Bu Med #1	✓	No Com			
15. Bu Med #1	✓	No Com			
16. Bu Med #1	✓	No Com			
17. Bu Med #1	✓	No Com			
18. Bu Med #1	✓	No Com			
19. Bu Med #1	✓	No Com			
20. Bu Med #1	✓	No Com			
21. Bu Med #1	✓	No Com			
22. Bu Med #1	✓	No Com			
23. Bu Med #1	✓	No Com			
24. Bu Med #1	✓	No Com			
25. Bu Med #1	✓	No Com			
26. Bu Med #1	✓	No Com			
27. Bu Med #1	✓	No Com			
28. Bu Med #1	✓	No Com			
29. Bu Med #1	✓	No Com			
30. Bu Med #1	✓	No Com			
31. Bu Med #1	✓	No Com			
32. Bu Med #1	✓	No Com			
33. Bu Med #1	✓	No Com			
34. Bu Med #1	✓	No Com			
35. Bu Med #1	✓	No Com			
36. Bu Med #1	✓	No Com			
37. Bu Med #1	✓	No Com			
38. Bu Med #1	✓	No Com			
39. Bu Med #1	✓	No Com			
40. Bu Med #1	✓	No Com			
41. Bu Med #1	✓	No Com			
42. Bu Med #1	✓	No Com			
43. Bu Med #1	✓	No Com			
44. Bu Med #1	✓	No Com			
45. Bu Med #1	✓	No Com			
46. Bu Med #1	✓	No Com			
47. Bu Med #1	✓	No Com			
48. Bu Med #1	✓	No Com			
49. Bu Med #1	✓	No Com			
50. Bu Med #1	✓	No Com			
51. Bu Med #1	✓	No Com			
52. Bu Med #1	✓	No Com			
53. Bu Med #1	✓	No Com			
54. Bu Med #1	✓	No Com			
55. Bu Med #1	✓	No Com			
56. Bu Med #1	✓	No Com			
57. Bu Med #1	✓	No Com			
58. Bu Med #1	✓	No Com			
59. Bu Med #1	✓	No Com			
60. Bu Med #1	✓	No Com			
61. Bu Med #1	✓	No Com			
62. Bu Med #1	✓	No Com			
63. Bu Med #1	✓	No Com			
64. Bu Med #1	✓	No Com			
65. Bu Med #1	✓	No Com			
66. Bu Med #1	✓	No Com			
67. Bu Med #1	✓	No Com			
68. Bu Med #1	✓	No Com			
69. Bu Med #1	✓	No Com			
70. Bu Med #1	✓	No Com			
71. Bu Med #1	✓	No Com			
72. Bu Med #1	✓	No Com			
73. Bu Med #1	✓	No Com			
74. Bu Med #1	✓	No Com			
75. Bu Med #1	✓	No Com			
76. Bu Med #1	✓	No Com			
77. Bu Med #1	✓	No Com			
78. Bu Med #1	✓	No Com			
79. Bu Med #1	✓	No Com			
80. Bu Med #1	✓	No Com			
81. Bu Med #1	✓	No Com			
82. Bu Med #1	✓	No Com			
83. Bu Med #1	✓	No Com			
84. Bu Med #1	✓	No Com			
85. Bu Med #1	✓	No Com			
86. Bu Med #1	✓	No Com			
87. Bu Med #1	✓	No Com			
88. Bu Med #1	✓	No Com			
89. Bu Med #1	✓	No Com			
90. Bu Med #1	✓	No Com			
91. Bu Med #1	✓	No Com			
92. Bu Med #1	✓	No Com			
93. Bu Med #1	✓	No Com			
94. Bu Med #1	✓	No Com			
95. Bu Med #1	✓	No Com			
96. Bu Med #1	✓	No Com			
97. Bu Med #1	✓	No Com			
98. Bu Med #1	✓	No Com			
99. Bu Med #1	✓	No Com			
100. Bu Med #1	✓	No Com			

FTG UTU
 Chesapeake Bay }
 Norfolk, Va }
 Rad Safe

8. 3.1.5 ✓ No Com
 3.1.5 ✓ Jaticumack, Maryland
 3.1.5 No Com.

" 3712 BMTS }
 Lackland AFB }
 San Antonio, Texas }
 Rad Safe

" ✓ No Com. USAF Schl of Av'n Med, Randolph, Va

" ✓ No Com. Nav Bu Med & Surg. DC.

3.1.6 No Com. 7th Aft. Sq 9, NAAS Cecil Field,

3.1.6 No Com. Doornick, Pa
 Phology
 La Gardner



PRIVACY ACT MATERIAL REMOVED

Name	Greenhouse	Proj. Org.	Proj. Ldr.	Proj. Ldr.	Roster Date
D-5	U of C.		Hq. 10.6	Ogle	7 Oct
D-5	U of C.	No Commitment			
D-5	U of C.		10.10	Zadina	27 Oct 30 Nov
1.1	NRL ✓	No Com			
1.1	NRL ✓	No Com			
1.5.1	U of C.		Hq. 10.0	Ogle	7 Oct 3 Dec
1.1.5.1	U of C.		10.8	Clyde Cowan	Dry Run 3 days to start
1.5.1	U of C.		"	"	"
1.5.1	Departed				
1.5.1	U of C.	Not Committed			
5.1	U of C.		10.8	Same as Biggles	
1.5.1	U of C.		10.8	Same as Biggles	
1.5.1	U of C.		10.8	Same as Biggles	
1.5.3	NRL ✓	No Com			
1.5.3	NRL ✓	No Com			
1.5.3	NRL ✓	No Com			
1.5.3	NRL ✓	No Com			
1.7	U of C.	No Commitment			
1.7	U of C.	No Commitment			
1.7	U of C.		10.4	Spence	(11 Oct - 4 Nov)
1.7	Not Going				
3.1.2	Not Going				
1.1	Naval Med. Inst.	No Com			
"	Naval Med. Res. Inst.	No Com			
"	No Com				

PRIVACY ACT MATERIAL REMOVED

TO TASK GROUP 5.1

⁰⁰ <u>Name</u>	⁶⁸ <u>Film Badge</u>	PRIVACY ACT MATERIAL REMOVED	⁷⁰ <u>Fall-out</u>	<u>Total</u>
Name Name	F. B. Residence	Blgd 70% Blgd		Total
1.60	4/1 to 4/27	1.82	1.27	2.87
.27	4/2 to 4/29	1.90	1.33	1.60
—	2/13 to 5/27	4.84	3.39	3.39
—	1/22 to 5/31	5.70	3.99	3.99
—	2/27 to 5/27	4.84	3.39	3.39
—	3/9 to 5/23	2.22	1.55	1.55
—	3/9 to 5/14	2.22	1.55	1.55
—	2/23 to 5/29	5.70	3.99	3.99
—	3/6 to 5/27	4.84	3.39	3.39
—	1/12 to 1/26 3/2 to 5/29	5.70	3.99	3.99
—	3/25 to 6/11	5.70	3.99	3.99
1.32	1/9 to 2/3 3/4 to 5/29	5.70	3.99	4.99 5.31
.62	2/17 to 6/4	5.70	3.99	4.61
2.06	2/12 to 5/31	5.70	3.99	6.05
—	1/30 to 5/5	2.10	1.47	1.47
—	2/12 to 6/4	5.70	3.99	3.99
.86	2/17 to 6/4	5.70	3.99	4.85
.17	2/12 to 5/31	5.70	3.99	4.16
—	2/27 to 6/4	5.70	3.99	3.99
0	2/27 to 6/4	5.70	3.99	3.99
.82	2/17 to 6/4	5.70	3.99	4.81
—	2/12 to 5/31	5.70	3.99	3.99
—	2/17 to 6/6	5.70	3.99	3.99
—	2/12 to 5/31	5.70	3.99	3.99

<u>Name</u>	<u>Film - badge</u>	PRIVACY ACT MATERIAL REMOVED	<u>Fall-out</u>	<u>Total</u>	
Name	F. B	Readiness	Blgd	70% Blgd	Total
2.63		2/17 to 2/20 3/31 to 5/31	5.70	3.99	6.62
.69		2/17 to 5/31	5.70	3.99	4.68
.23		2/12 to 5/22	2.22	1.55	1.78
0		2/12 to 5/28	3.20	2.24	2.24
1.14		3/22 to 6/4	5.70	3.99	5.13
.55		2/12 to 4/29	1.90	1.33	1.88
.49		2/17 to 5/28	3.20	2.24	2.73
1.33		1/29 to 5/1	1.98	1.39	2.72
1.71		2/17 to 6/4	5.70	3.99	5.70
.82		1/29 to 5/28	3.20	2.24	3.05
.15		3/22 to 4/30	1.94	1.36	1.51
1.76		2/17 to 5/28	3.20	2.24	4.00
.98		2/12 to 6/4	5.70	3.99	4.97
—		2/12 to 6/4	5.70	3.99	3.99
.72		2/17 to 6/4	5.70	3.99	4.71
—		2/28 to 6/4	5.70	3.99	3.99
.13		2/17 to 5/22	2.22	1.55	1.68
.28		2/17 to 5/28	3.20	2.24	2.52
—		3/29 to 5/10	2.20	1.54	1.54
0		2/12 to 5/10	2.20	1.54	1.54
.08		1/30 to 4/30	1.94	1.36	1.44
.31		2/17 to 5/31	5.70	3.99	4.30
1.09		2/12 to 5/31	5.70	3.99	5.00
.80		2/17 to 6/4	5.70	3.99	4.7

<u>Name</u>	<u>Film - badge</u>	PRIVACY ACT MATERIAL REMOVED	<u>Full-out</u>	<u>Total</u>	
Name	F. B.	Residence	Badge 70% Badge	Total	
1.64		2/17 to 6/4	5.70	3.99	5.63
.56		2/12 to 5/31	5.70	3.99	4.55
—		3/3 to 5/17	2.22	1.55	1.55
.36		3/4 to 6/6	5.70	3.99	4.35
5.15		2/28 to 5/24	2.22	1.55	6.70
.52		1/30 to 5/12	2.22	1.55	2.07
—		3/31 to 5/27	4.82	3.37	3.37
.71		2/5 to 5/22	2.22	1.55	2.26
.15		3/11 to 5/22	2.22	1.55	1.70
1.32		3/5 to 5/30	5.70	3.99	5.31
0		1/30 to 4/18	1.46	1.02	1.02
2.66		3/15 to 4/14	1.29	.90	3.56
.62		3/1 to 5/16	2.22	1.55	2.17
—		2/24 to 5/8	2.17	1.52	1.52
—		2/14 to 6/4	5.70	3.99	3.99
1.80		3/6 to 5/14	2.22	1.55	3.35
.44		1/30 to 5/13	2.22	1.55	1.99
2.77		2/14 to 5/13	2.22	1.55	4.32
.27		3/1 to 5/14	2.22	1.55	1.82
—		3/7 to 5/30	5.70	3.99	3.99
2.21		3/11 to 5/19	2.22	1.55	3.76
.88		2/13 to 5/14	2.22	1.55	2.43
1.17		3/1 to 5/17	2.22	1.55	2.7
.08		2/24 to 5/17	2.22	1.55	1.1

<u>Name</u>	<u>Film-badge</u>	<u>Residence</u>	<u>Badge</u>	<u>Fall-out</u>	<u>Total</u>
Name	F. B.	Residence	Badge	70% Badge	Total
	2.38	4/24 to 5/13	.54	.38	2.76
	0	3/1 to 5/19	2.22	1.55	1.55
	.79	3/11 to 5/24	2.22	1.55	2.34
	.37	3/12 to 5/26	3.82	2.67	3.04
	1.32	3/31 to 5/12	2.22	1.55	2.87
	.84	3/1 to 5/17	2.22	1.55	2.39
	1.25	3/5 to 5/30	5.70	3.99	5.24
	2.54	3/1 to 5/29	5.70	3.99	6.53
	.22	1/30 to 5/8	2.17	1.52	1.74
	—	3/14 to 5/30	5.70	3.99	3.99
	—	4/6 to 4/14	1.29	.90	.90
	—	1/6 to 4/18	1.46	1.02	1.02
	.98	2/23 to 5/14	2.22	1.55	2.53
	.66	2/24 to 5/21	2.22	1.55	2.21
	—	3/11 to 5/29	5.70	3.99	3.99
	1.10	3/12 to 5/30	5.70	3.99	5.09
	2.40	2/13 to 5/18	2.22	1.55	6.43 ^{3.95}
	4.88	3/12 to 5/30	5.70	3.99	8.87
	—	3/5 to 5/8	2.17	1.52	1.52
	.27	3/6 to 5/24	2.22	1.55	1.82
	.46	2/24 to 5/14	2.22	1.55	2.01
	2.18	3/7 to 5/29	5.70	3.99	6.17
	2.45	2/24 to 5/29	5.70	3.99	6.44
	1.00	2/14 to 5/14	2.22	1.55	2.53

Name

Film-base

PRIVACY ACT MATERIAL REMOVED

Fall-out

Total

Name

Name	F.B.	Residence	Bkgd	70% Bkgd	Total
	1.62	3/12 to 5/30	5.70	3.99	5.61
	1.16	2/20 to 5/16	2.22	1.55	2.71
	1.82	3/17 to 5/29	5.70	3.99	5.81
	.52	3/11 to 5/29	5.70	3.99	4.51
	.80	3/11 to 5/21	2.22	1.55	2.35
	1.17	2/24 to 5/18	2.22	1.55	2.72
	1.01	3/5 to 5/30	5.70	3.99	5.00
	.83	3/1 to 5/22	2.22	1.55	2.38
	—	2/25 to 5/6	2.13	1.49	1.49
	—	3/1 to 5/23	2.22	1.55	1.55
	.45	3/19 to 5/22	2.22	1.55	2.00
	.78	2/14 to 5/15	2.22	1.55	2.33
	.09	1/30 to 4/28	1.86	1.30	1.39
	—	2/5 to 5/16	2.22	1.55	1.55
	—	2/14 to 5/5	2.10	1.47	1.47
	—	2/5 to 5/5	2.10	1.47	1.47
	.94	3/15 to 5/15	2.22	1.55	2.49
	—	1/6 to 4/23	1.63	1.14	1.14
	.86	3/9 to 5/24	2.22	1.55	2.41
	.05	3/9 to 5/7	2.15	1.51	1.56
	.23	3/9 to 5/24	2.22	1.55	1.78
	0	3/9 to 4/27	1.82	1.27	1.27
	—	3/9 to 5/8	2.17	1.52	1.52
	0	3/9 to 5/7	2.15	1.51	1.5

PRIVACY ACT MATERIAL REMOVED

<u>Name</u>	<u>Film - badge</u>	<u>Residence</u>	<u>Badge</u>	<u>Fall-out</u>	<u>Total</u>
<u>Name</u>	F.B.	Residence	Badge	70% Badge	Total
1.53	3/9 to 5/10	2.20	1.54	3.07	
.21	2/1 to 4/26	1.78	1.25	1.46	
—	3/9 to 5/19	2.22	1.55	1.55	
1.44	3/9 to 5/10	2.20	1.54	2.98	
—	3/9 to 5/7	2.15	1.51	1.51	
2.64	2/2 to 4/27	1.82	1.27	3.91	
2.81	3/9 to 5/7	2.15	1.51	4.32	
0	3/9 to 5/19	2.22	1.55	1.55	
.24	3/9 to 5/13	2.22	1.55	1.79	
.42	3/9 to 5/4	2.08	1.46	1.88	
.12	3/9 to 5/4	2.08	1.46	1.58	
.23	3/9 to 5/24	2.22	1.55	1.78	
—	3/9 to 5/17	2.22	1.55	1.55	
.38	3/9 to 5/17	2.22	1.55	1.93	
.33	3/9 to 5/24	2.22	1.55	1.88	
.22	3/9 to 5/17	2.22	1.55	1.77	
.05	3/9 to 5/17	2.22	1.55	1.60	
.48	2/1 to 5/17	2.22	1.55	2.03	
3.09	3/9 to 5/24	2.22	1.55	4.64	
2.78	3/9 to 5/24	2.22	1.55	4.33	
0	2/1 to 5/17	2.22	1.55	1.55	
—	3/9 to 4/26	1.78	1.25	1.25	
—	3/8 to 4/26	1.78	1.25	1.25	
—	3/8 to 4/26	1.78	1.25	1.25	

<u>Name</u>	<u>Film badge</u>	PRIVACY ACT MATERIAL REMOVED	<u>Fall-out</u>	<u>Total</u>	
<u>Name</u>	F.B.	Residence	Bepl	70% Bepl	Total
	.30	3/8 to 4/26	1.78	1.25	1.55
	—	3/16 to 4/12	1.08	.74	.74
	0	3/9 to 4/21	1.55	1.09	1.09
	.21	3/9 to 4/27	1.82	1.27	1.48
	2.19	3/4 to 5/25	2.22	1.55	3.74
	1.86	2/10 to 5/20	2.22	1.55	3.41
	.24	3/10 to 5/13	2.22	1.55	1.79
	2.19	2/26 to 5/20	2.22	1.55	3.74
	.67	4/5 to 5/28	5.42	3.79	4.46
	—	4/13 to 4/23	.44	.31	.31
	.13	4/3 to 5/27	4.84	3.39	3.52
	1.30	3/20 to 5/13	2.22	1.55	2.85
	2.18	1/15 to 6/7	5.70	3.99	6.17
	—	3/19 to 5/29	5.70	3.99	3.99
	—	4/19 to 5/2	.73	.51	.51
	2.00	3/12 to 5/13	2.22	1.55	3.55
	1.80	3/14 to 5/29	5.70	3.99	5.79
	5.19	1/31 to 5/29	5.70	3.99	9.18
	.09	3/23 to 5/27	4.84	3.39	3.48
	1.83	2/14 to 5/21	2.22	1.55	3.38
	.74	3/12 to 5/22	2.22	1.55	2.29
	1.82	3/9 to 5/13	2.22	1.55	3.37
	.17	4/19 to 6/2	4.21	2.95	3.12
	1.38	4/13 to 5/11	2.22	1.55	2.9

PRIVACY ACT MATERIAL REMOVED

<u>Name</u>	<u>Film-badge</u>	<u>Fall-out</u>	<u>Total</u>		
<u>Name</u>	<u>F. B.</u>	<u>Residence</u>	<u>Blogd.</u>	<u>70% Blogd.</u>	<u>Total</u>
—	3/14 to 5/29	5.70	3.99	3.99	
1.22	10/19 to 5/14	2.22	1.55	2.77	
.22	3/14 to 5/29	5.70	3.99	4.21	
.29	3/12 to 5/13	2.22	1.55	1.84	
4.17	2/14 to 5/28	5.42	3.79	7.96	
.28	3/1 to 5/19	2.22	1.55	1.83	
.38	3/1 to 6/5	5.70	3.99	4.37	
2.32	3/1 to 5/29	5.70	3.99	6.31	
.36	3/1 to 5/29	5.70	3.99	4.35	
1.04	3/1 to 5/29	5.70	3.99	5.03	
.07	3/1 to 6/5	5.70	3.99	4.06	
.52	3/1 to 6/5	5.70	3.99	4.51	
—	3/1 to 5/19	2.22	1.55	1.55	
—	3/1 to 6/5	5.70	3.99	3.99	
.17	3/1 to 5/19	2.22	1.55	1.72	
.45	3/1 to 5/19	2.22	1.55	2.00	
1.06	3/1 to 5/29	5.70	3.99	5.05	
1.05	3/1 to 5/29	5.70	3.99	5.04	
1.12	3/1 to 5/29	5.70	3.99	5.11	
2.37	3/1 to 5/29	5.70	3.99	6.36	
3.95	3/1 to 5/29	5.70	3.99	7.94	
.96	3/1 to 5/29	5.70	3.99	4.90	
—	3/1 to 5/29	5.70	3.99	3.99	

PRIVACY ACT MATERIAL REMOVED

PRIVACY ACT MATERIAL REMOVED

Name

Film badge

Fall-out

Total

Name

F. B.

Residence

~~Bkgd~~

70% ~~Bkgd~~

Total

.36	3/1 to 6/5	5.70	3.99	4.35
4.06	3/1 to 5/29	5.70	3.99	8.05
—	3/1 to 5/29	5.70	3.99	3.99
4.43	3/1 to 5/29	5.70	3.99	8.42
2.72	3/1 to 5/29	5.70	3.99	6.71
.26	3/1 to 5/29	5.70	3.99	4.25
1.74	3/1 to 5/29	5.70	3.99	5.73
.05	3/1 to 5/29	5.70	3.99	4.04
.53	3/1 to 6/6	5.70	3.99	4.52
.09	3/1 to 5/29	5.70	3.99	4.08
—	3/1 to 5/29	5.70	3.99	3.99
.66	3/1 to 5/29			
1.39	2/1 to 3/19			
1.40	3/1 to 5/29			
1.77	3/12 to 5/13			
—	3/1 to 5/29			
1.24	3/1 to 5/29			
.03	3/1 to 4/28			
.25	3/1 to 5/29			
.52	3/1 to 5/29			
.77	3/1 to 6/5			
.75	3/1 to 6/5			
<u>1.93</u>				

PRIVACY ACT MATERIAL REMOVED

<u>Name</u>	<u>Film badge</u>	PRIVACY ACT MATERIAL REMOVED	<u>Fall-out</u>	<u>Total</u>	
<u>Name</u>	F. B.	Residence	Read	70% Read	total
—	3/1 to 5/14	2.22	1.55	1.50	
.19	3/13 to 5/12	2.22	1.55	1.74	
.71	3/13 to 5/6	2.13	1.49	2.20	
.98	3/4 to 5/6	2.13	1.49	2.47	
2.03	4/12 to 5/29	4.70	3.29	5.30	
.10	1/22 to 5/2	2.01	1.41	1.51	
.37	1/22 to 5/2	2.01	1.41	1.70	
0	12/3 to 5/2	2.01	1.41	1.41	
—	2/12 to 5/3	2.05	1.44	1.44	
0	1/22 to 5/2	2.01	1.41	1.41	
.23	1/22 to 5/3	2.05	1.44	1.67	
.12	12/3 to 5/2	2.01	1.41	1.53	
0	2/12 to 5/3	2.05	1.44	1.44	
—	1/22 to 4/29	1.90	1.33	1.33	
.16	12/3 to 5/2	2.01	1.41	1.57	
.25	1/22 to 5/3	2.05	1.44	1.69	
.05	12/3 to 4/29	1.90	1.33	1.33	
.99	2/28 to 5/19	2.22	1.55	2.50	
1.17	3/13 to 5/14	2.22	1.55	2.72	
.40	3/13 to 5/14	2.22	1.55	1.95	
1.02	3/13 to 5/14	2.22	1.55	2.59	
2.41	3/13 to 5/14	2.22	1.55	3.97	
.65	3/13 to 5/14	2.22	1.55	2.2	

PRIVACY ACT MATERIAL REMOVED

<u>Name</u>	<u>Film badge</u>		<u>Fall-out</u>	<u>Total</u>	
<u>Name</u>	F.B.	Residence	Bad	70% Bad	Total
.38	3/13 to 5/14	2.20	1.55	1.93	
-	3/13 to 5/14	2.20	1.55	1.55	
1.63	3/13 to 5/14	2.20	1.55	3.18	
1.52	3/13 to 5/14	2.20	1.55	3.07	
1.34	3/13 to 5/14	2.20	1.55	2.84	
.46	3/13 to 4/26	1.78	1.25	1.71	
.189	3/13 to 4/26	1.78	1.25	2.14	
1.11	3/26 to 5/16	2.22	1.55	2.66	
1.51	4/2 to 4/25	1.73	1.21	2.72	
.74	2/12 to 4/27	1.82	1.27	2.01	
3.20	3/9 to 5/16	2.22	1.55	3.75	
1.94	2/27 to 5/13	2.22	1.55	3.49	
5.64	2/27 to 5/29	5.70	3.99	9.63	
3.35	3/12 to 5/16	2.22	1.55	4.90	
.56	3/9 to 5/13	2.22	1.55	2.11	
.37	3/2 to 5/31	5.70	3.99	4.36	
4.78	2/27 to 5/31	5.70	3.99	8.77	
1.01	3/9 to 5/13	2.22	1.55	2.56	
.06	3/9 to 5/29	5.70	3.99	4.05	
3.81	2/27 to 5/16	2.22	1.55	5.36	
2.71	3/9 to 5/6	2.13	1.49	4.20	
3.27	2/27 to 5/13	2.22	1.55	4.82	
1.48	3/9 to 5/13	2.22	1.55	3.03	

PRIVACY ACT MATERIAL REMOVED

PRIVACY ACT MATERIAL REMOVED

Name

Film badge

Fall-out

Total

Name

F. B.

Residence

~~100%~~

70% ~~100%~~

Total

.38

3/9 to 5/29

5.70

3.99

4.37

3.04

2/27 to 5/13

2.22

1.55

4.59

3.80

3/9 to 6/2

5.70

3.99

7.79

.52

3/9 to 5/29

5.70

3.99

4.51

3.24

3/12 to 5/27

5.70

3.99

7.23

.18

3/2 to 5/27

5.70

3.99

4.17

.36

4/7 to 5/27

5.70

3.99

4.35

PRIVACY ACT MATERIAL REMOVED

ACT MATERIAL REMOVED

Name	Film/Slide (X)	Fall-out (X)	Total (X)
	.56	.95	1.51
	.75	1.09	1.84
	1.03	1.55	2.58
	.49	1.06	1.55
	.32	1.30	1.62
	.35	1.53	1.88
<i>No travel performed</i>			
	.73	1.15	1.88
	.61	1.21	1.82
	.51	.43	.94
	.93	1.55	2.48
	.32	1.55	1.87
	.30	1.25	1.55
	1.18	1.55	2.73
	.54	.64	1.18
	1.47	1.55	3.02
	—	.41	.41
<i>No travel performed</i>			
	.30	1.55	1.85
	0	.38	.38
	1.24	1.55	2.79
	.51	—	.51
	—	1.53	1.53
	.34	1.33	1.67
	.72	.95	1.67
	.69	1.55	2.24
	.28	.38	.66
	.26	1.30	1.56
	—	1.53	1.53
	.91	1.55	2.46
	1.00	1.55	2.55
	1.32	1.55	2.87
	.52	.95	1.47
	.90	1.55	2.45
	1.12	1.55	2.67

ACT MATERIAL REMOVED

Name	Film Badge (r)	Fall-out (r)	Total (r)
	1.40	3.99	5.39
	1.77	1.55	3.32
	—	3.99	3.99
	1.24	3.99	5.23
	.03	1.30	1.33
	.25	3.99	4.24
	.52	3.99	4.51
	.77	3.99	4.76
	.75	3.99	4.74
	1.93	1.36	3.29
	.31	3.99	4.30
	.11	3.99	4.10
	—	3.99	3.99
	1.48	3.99	5.47
	.37	.61	.98
	.46	3.99	4.45
	—	1.55	1.55

PRIVACY

Name

	F.B.	Residence	Bkgd	70% Bkgd	Total
—		3/11 to 5/29	5.70	3.99	3.99
C. 1.10		3/12 to 5/30	5.70	3.99	5.09
2.40		2/13 to 5/18	2.22	1.55	3.95
4.88		3/12 to 5/30	5.70	3.99	8.87
—		3/5 to 5/8	2.17	1.52	1.52
.27		3/6 to 5/24	2.22	1.55	1.82
.46		2/24 to 5/14	2.22	1.55	2.01
2.18		3/7 to 5/29	5.70	3.99	6.17
2.45		2/24 to 5/29	5.70	3.99	6.44
1.00		2/14 to 5/14	2.22	1.55	2.55
1.62		3/12 to 5/30	5.70	3.99	5.61
1.16		2/20 to 5/16	2.22	1.55	2.71
1.82		3/17 to 5/29	5.70	3.99	5.81
.52		3/11 to 5/29	5.70	3.99	4.51
.80		3/11 to 5/21	2.22	1.55	2.35
.17		2/24 to 5/18	2.22	1.55	2.72
.01		3/5 to 5/30	5.70	3.99	5.00
83		3/1 to 5/22	2.22	1.55	2.38
—		2/25 to 5/6	2.13	1.49	1.49
—		3/1 to 5/23	2.22	1.55	1.55
45		3/19 to 5/22	2.22	1.55	2.00
.78		2/14 to 5/15	2.22	1.55	2.33
—					
.09		1/20 to 4/28	1.86	1.30	1.39
—		2/12 to 5/31	5.70	3.99	3.99
2.63		2/17 to 2/20 2/21 to 5/31	5.70	3.99	6.62
.23		2/12 to 5/22	2.22	1.55	1.78
—		2/5 to 5/16	2.22	1.55	1.55
1.09		2/12 to 5/31	5.70	3.99	5.08
.56		2/12 to 5/31	5.70	3.99	4.55

PRIVACY ACT MATERIAL REMOVED

N R L

Name	F. B.	Residence	Bkgd	10% Bkgd	Total
	.52	1/30 to 5/12	2.21	1.55	2.07
	—	3/31 to 5/27	4.82	3.37	3.37
	.71	2/5 to 5/22	2.22	1.55	2.26
	.15	3/11 to 5/22	2.22	1.55	1.70
	.32	3/5 to 5/30	5.70	3.99	5.31
	0	1/30 to 4/18	1.46	1.02	1.02
	—	2/23 to 5/8	2.17	1.52	1.52
	2.66	3/15 to 4/14	1.27	.90	3.56
	.62	3/1 to 5/16	2.22	1.55	2.17
	—	2/24 to 5/8	2.17	1.52	1.52
	—	2/14 to 6/4	5.70	3.99	3.99
	1.80	3/6 to 5/11	2.22	1.55	3.35
	.44	1/30 to 5/13	2.22	1.55	1.99
	2.77	2/14 to 5/13	2.22	1.55	4.32
	.27	3/1 to 5/14	2.22	1.55	1.82
	—	3/7 to 5/30	5.70	3.99	3.99
	2.21	3/11 to 5/19	2.22	1.55	3.76
	.88	2/13 to 5/14	2.22	1.55	2.43
	1.17	3/1 to 5/17	2.22	1.55	2.72
	.08	2/24 to 5/17	2.22	1.55	1.63
	2.38	4/24 to 5/13	2.22 ^{.51}	1.55 ^{.34}	2.74 ^{2.74}
	0	3/1 to 5/19	2.22	1.55	1.55
	.79	3/11 to 5/24	2.22	1.55	2.34
	.37	3/12 to 5/26	3.80	2.66	3.03
	1.32	3/21 to 5/12	2.22	1.55	3.87
	.84	3/1 to 5/17	2.22	1.55	2.39
	1.25	3/5 to 5/30	5.70	3.99	5.24
	2.54	3/1 to 5/29	5.70	3.99	6.53
	.22	1/30 to 5/8	2.17	1.52	1.74
	—	3/14 to 5/30	5.70	3.99	3.99
	—	4/6 to 4/14	.90	.63	.63
J. —	—	1/6 to 4/8	—	—	—
	.98	2/23 to 5/14	2.22	1.55	2.53
	.66	2/24 to 5/21	2.22	1.55	2.21

PRIVACY ACT MATERIAL REMOVED

Name	F.B.	Residence	Bkgsd	70% Bkgsd	Total
		2/14 to 5/5	2.10	1.47	1.47
		2/5 to 5/5	2.10	1.47	1.47
		3/15 to 5/15	2.22	1.55	2.49
		1/6 to 4/23	1.64	1.15	1.15

PRIVACY ACT MATERIAL REMOVED

Name

	F. B.	Residence	Bkghd	70% Bkghd	Total
	.56	3/19 to 4/15	1.35	.95	1.51
	.75	3/12 to 4/21	1.55	1.09	1.84
	1.03	3/12 to 5/13	2.22	1.55	2.58
	.49	4/9 to 4/26	1.51 1.51	1.06	1.51 1.51
	.32	3/21 to 4/28	1.86	1.30	1.62
	.35	3/4 to 5/9	2.19 2.19	1.53	1.88
NTP					
	.73	3/4 to 4/23	1.64	1.15	1.88
	.61	3/26 to 4/25	1.73	1.21	1.82
	.51	3/4 to 4/10	.62	.43	.94
	.93	3/12 to 5/13	2.22	1.55	2.48
	.22	4/10 to 5/11	2.21	1.55	1.87
	.30	4/1 to 4/26	1.78	1.25	1.55
	1.18	2/14 to 5/16	2.22	1.55	2.73
	.54	4/14 to 5/16	.92	.64	1.18
	1.47	3/14 to 5/16	2.22	1.55	3.02
		4/23 to 5/14	.59	.41	.41
	.30	^{NTP} 3/20 to 4/25	2.22	1.55	1.85
	.0	4/24 to 5/16	.54	.38	.38
	1.24	3/12 to 5/14	2.22	1.55	2.79
	.51	3/12 to 4/8	—	—	.51
	—	4/2 to 5/9	2.19	1.53	1.53
	.34	2/21 to 4/29	1.90 1.90	1.33 1.33	1.67 1.67
	.72	3/16 to 4/15	1.35 1.35	1.95 1.95	2.27 2.27
	.69	3/12 to 5/16	2.22	1.55	2.24
	.28	4/24 to 5/16	.54	.38	.66
	.26	3/21 to 4/28	1.86	1.30	1.56
	—	3/26 to 5/9	2.19	1.53	1.53
	.91	3/12 to 5/13	2.22	1.55	2.46
	1.00	4/4 to 5/16	2.22	1.55	2.55
	1.32	3/12 to 5/14	2.22	1.55	2.87
	.52	3/16 to 4/10	.62	.43	.95
	.70	3/4 to 5/14	2.22	1.55	2.25
	1.12	2/12 to 4/28	1.86	1.30	2.42

T U 3.1.5

4.02 on F.B. ~~no data~~
 3.22 on F.A. Total 7.

Greenhouse Ranger 2
 F.B. F.A. Total

3.75	2.95	6.70	1.80	8.
6.08	3.99	10.05	—	10.05
4.55	3.99	8.54	—	8.54
4.63	3.36	7.99	—	7.99
3.74	3.36	7.10	—	7.10
2.89	3.99	6.88	—	6.88
5.32	3.99	9.31	—	9.31
2.03	3.99	6.02	—	6.02
2.88	3.99	6.87	—	6.87
5.64	3.99	9.63	—	9.63
4.50	3.21	7.71	—	7.71
7.57	1.55	9.12	—	9.12
4.78	3.99	8.77	—	8.77
5.91	3.99	9.90	—	9.90
6.50	3.99	10.49	—	10.49
3.75	3.99	7.74	—	7.74
4.66	3.99	8.65	—	8.65
5.50	1.55	7.05	—	7.05
4.11	3.99	8.10	—	8.10

1.7
Greenhouse Ranger
F.B. F.A. Total

2.38 3.99 6.37 — 6.
3.79 3.99 7.78 .19 7.
4.90 1.55 6.45 — 6.
4.24 3.99 8.23 — 8.2

T U 3.1.2

5.44 3.99 9.43 — 9.4
2.18 3.99 6.17 — 6.17
5.19 3.99 9.18 — 9.18
4.17 3.78 7.95 — 7.95

Bu Med Unit #1

2.32 3.99 6.31 — 6.31
2.37 3.99 6.36 — 6.36
3.95 3.99 7.94 — 7.94
4.06 3.99 8.05 — 8.05
4.43 3.99 8.42 — 8.42
2.72 3.99 6.71

6.9

2.22 3.99 6.21 — 6.21

TU 3.1.5 (cont.)

Brenhouse Rayer &
F.B. F.A. Intl

-	6.12	3.99	10.11	-	10.
?	3.80	3.99	7.79	-	7.
	4.49	3.99	8.48	-	8.
	4.44	3.99	8.43	o	8.

TU 3.1.6

g.	3.24	3.36	6.60	-	6.
	2.15	3.99	6.14	.45	6.

EXPOSURES RECORDED ON GREENHOUSE MONITORS

E	FILM BADGE READING	DEPARTED ATOLL	EXPOSURE DUE TO BACKGROUND	BACKGROUND EXPOSURE $\times 70\%$	TOTAL EXPOSURES
	2550	25 May	2350	1645	4195
	2700	13 May	2200	1540	4240
	3035	13 May	2200	1540	4575
	3043	13 May	2200	1540	4583
	3270	13 May	2200	1540	4810
	4660	4 June	5620	3940	8600
	4775	31 May	5620	3940	8715
	5448	7 June	5630	3940	9388
	7570	13 May	2200	1540	9110

* FOR MONITORS LEAVING ON 1ST JUNE OR LATER - A DOSAGE OF 400 MR. WAS ALLOWED FOR ITEM SHOT FALLOUT. THIS IS A CLOSE APPROXIMATION AS SHOWN FROM BADGES THAT WERE WORN FROM 12 MAY TO 4 JUNE AND THEN DEVELOPED. RECORDS SHOW THAT HEAVY RAINS AROUND 1 JUNE - DECREASED THE BACKGROUND CONSIDERABLY.

D-5

Drumhouse Range Tot

F.B. F.A. Total

1.43 3.99 6.42 — 6.4

2.26 3.78 6.04 — 6.0

4.22 3.99 8.21 .08 8.2

1.1

2.06 3.99 6.05 — 6.0

2.63 3.99 6.62 — 6.62

1.5.1

5.47 2.98 8.45 1.07 9.52

5.22 3.99 9.21 3.58 12.79

3.29 3.99 7.28 1.17 8.45

~~5.85~~ 1.55 6.70 1.73 8.43

5.84 3.99 9.83 .31 10.14

2.58 3.99 6.57 — 6.5

5.51 1.55 7.06 .80 7.86

4.97 3.99 8.96 — 8.96

1.5.3

2.54 3.99 6.53 — 6.53

4.88 3.99 8.87 — 8.87

2.18 3.99 6.17 — 6.17

2.45 3.99 6.44 — 6.44

Name	F. B.	Residence	Bkagd	70% Bkagd	Total
	1.40	3/1 to 5/29	5.70	3.99	5.38
	1.77	3/12 to 5/13	2.22	1.55	3.30
	—	3/1 to 5/29	5.70	3.99	3.99
	1.24	3/1 to 5/29	5.70	3.99	5.23
	.03	3/1 to 4/28	1.86	1.30	1.33
	.25	3/1 to 5/29	5.70	3.99	4.24
	.52	3/1 to 5/29	5.70	3.99	4.51
	.77	3/1 to 6/5	5.70	3.99	4.76
	.75	3/1 to 6/5	5.70	3.99	4.74
	1.93	2/27 to 4/30	1.94	1.36	3.29
	.31	3/1 to 6/5	5.70	3.99	4.30
	.11	3/1 to 5/29	5.70	3.99	4.10
	—	3/1 to 6/5	5.70	3.99	3.99
	1.48	3/1 to 5/29	5.70	3.99	5.47
	.37	4/15 to 5/16	.87	.61	.98
	.46	3/1 to 6/6	5.70	3.99	4.45
	—	3/1 to 5/18	2.22	1.55	1.55

NRDC VENDOR

Name	Film/Edge (r)	Fall out (r)	Total (r)
	.56	.95	1.51
	.75	1.09	1.84
	1.03	1.55	2.58
	.49	1.06	1.55
	.32	1.30	1.62
	.35	1.53	1.88
<i>No travel performed</i>			
	.73	1.15	1.88
	.61	1.21	1.82
	.51	.43	.94
	.93	1.55	2.48
	.32	1.55	1.87
	.20	1.25	1.55
	1.18	1.55	2.73
	.54	.64	1.18
	1.47	1.55	3.02
		.41	.41
<i>No travel performed</i>			
	.30	1.55	1.25
	0	.38	.38
	1.24	1.55	2.79
	.51		.51
		1.53	1.53
	.34	1.33	1.67
	.72	.95	1.67
	.69	1.55	2.24
	.28	.38	.66
	.26	1.30	1.56
		1.53	1.53
	.91	1.55	2.46
	1.00	1.55	2.55
	1.32	1.55	2.87
	.52	.43	.95
	.70	1.55	2.25
	1.12	1.55	2.67

Origin
Name

V.I.P.

	F. B. Expense	Kind overseen	Backgd	70% Bgd	Total
	-	4/2 to 4/8	10	7	7
	80mv	4/15 to 4/19	140	98	178
	-	4/2 to 4/21	1550	1085	1085
	-	4/2 to 4/8	10	7	7
	-	4/2 to 4/8	10	7	7
	-	5/5 to 5/10	100	70	70
	-	5/5 to 5/10	100	70	70
	-	4/13 to 4/19	285	180	180
	80mv	4/15 to 4/19	135	95	175
	-	5/5 to 5/10	100	70	70
	-	4/2 to 4/8	10	7	7
	-	4/13 to 4/19	285	180	180
	-	4/2 to 4/8	10	7	7
	95mv	4/13 to 4/19	285	180	275
	-	5/5 to 5/10	100	70	70
	40mv	4/13 to 4/19	285	180	220
	65mv	4/15 to 4/19	135	95	160
	50	2/28 to 5/7	2190	1533	1583
		5/18 to 5/27	2620	1834	1834
	-	4/5 to 4/12	1080	756	756
		5/6 to 5/10	70	49	805
	68	4/21 to 5/27	3290 670	2303 469	2371 537
	-	2/25 to 5/27	4840 2220	3392 1554	3392 1554
	-	5/2 to 5/12	210	147	147
	-	5/3 to 5/10	160	112	112
	-	5/5 to 5/10	100	70	70
	-	5/20 to 5/29	3480	2436	2436
	0	4/21 to 5/23	670	469	469
	180	3/30 to 4/11	900	630	810
	240	2/25 to 5/27	4840 2220	3392 1554	3632 1774
	-	5/6 to 5/12	80	56	56
	-	3/23 to 4/9	320	224	224
m.	240	5/1 to 5/18	240	168	408

kg-TG 3.1

Org.	Name	F.B.	Residence	Bkqd	70% Bkqd	Total Exposure
Hq-T62		510	3/1 to 4/23	1635	1145	1655
		6	4/2 to 4/12	1080	756	756
		870	4/15 to 4/29	550	385	1255
		60	4/5 to 5/28	3710	2597	2657
		215	1/9 to 3/22	—	—	—
			4/5 to 5/14	2220	1554	1769
			5/4 to 5/18			
		235	5/6 to 5/14	90	63	298
		230	4/2 to 4/14	1290	903	1133
		160	5/3 to 5/14	180	126	286
		—	5/6 to 5/14	90	63	63
		—	3/13 to 4/18	1460	1022	1022
		—	2/28 to 4/25	1730	1211	2941
		—	5/5 to 5/27	1740	1268	2429
		—	3/2 to 5/15	2220	1554	1295
		235	3/9 to 5/27	2220 3840	1554 2688	1554
		—	4/5 to 6/4	2220 5700	1554 3990	2923
		—	1/22 to 5/21	2220	1554	1554
		—	3/9 to 5/27	2220 3840	1554 2688	1554
		—	2/27 to 5/27	2220 3840	1554 2688	2688
		—	3/13 to 5/31	2220 5700	1554 3990	3990
		—	2/13 to 5/27	2220 3840	1554 2688	2688
		—	1/22 to 5/31	2220 5700	1554 3990	3990
		—	2/27 to 5/27	2220 3840	1554 2688	2688
		—	2/23 to 5/25	2220	1554	1554
		—	3/14 to 5/18	2220	1554	1554
		—	3/9 to 6/20	2220 5700	1554 3990	3990
		—	3/31 to 6/8	2220 5700	1554 3990	3990
		—	3/9 to 5/23	2220	1554	1554
		—	3/19 to 5/14	2220	1554	1554
		—	1/22 to 6/20	2220 5700	1554 3990	3990
		—	2/23 to 5/29	2220 5700	1554 3990	3990
		—	3/9 to 5/20	2220 5700	1554 3990	3990
		—	3/16 to 5/31	2220 5700	1554 3990	3990

D-1

W



Orig.

D-1

F.B.	Residence	Klgl	718 Klgl	Jtbl Exp.
—	3/14 to 5/6	2130	1491	1491
—	3/9 to 5/31	5700 2220	3990 +554	3990 +554
—	3/9 to 6/20	5700 2220	3990 +554	3990 +554
150	3/3 to 5/31	5700 2220	3990 +554	4140 +554

D-2

—	1/22 to 2/10	—	—	—
—	3/12 to 4/21	1550	1085	—
—	5/3 to 6/8	3650 +70	2555 +119	3640 +204
75	2/24 to 6/8	5700 220	3990 +554	+129 2000 +554 + rolls
—	12/8 to 4/8	10 4265	7 2996	2993
—	4/17 to 6/2	785	550	559
200	2/10 to 4/8	10	7	—
—	4/17 to 5/9	700	490	697
0	1/8 to 2/10	—	—	—
—	4/2 to 5/10	2200 5700	1540 3990	1540 3990
0	3/17 to 5/29	2220	1554	1554

D-3

0	2/25 to 5/28	5420 2220	3794 +554	3794 +554
—	2/5 to 6/1	5700 2220	3990 +554	3990 +554
—	2/6 to 6/1	5700 2220	3990 +554	3990 +554
1405	2/23 to 5/27	4820 2220	3374 +554	4779 +554
—	3/3 to 5/27	4820 2220	3374 +554	3374 +554
—	4/5 to 4/21	1550	1085	1085
—	2/27 to 5/5	2100	1470	1470
—	5/21 to 6/6	4150 670	2905 +704	2905 +704
—	2/17 to 5/25	2220	1554	1554
—	12/5 to 3/1	—	—	—
—	3/17 to 5/29	5700 2220	3990 +554	3990 +554
—	1/9 to 1/21	—	—	—
—	2/23 to 5/27	4840 2220	3388 +554	3388 +554
—	2/27 to 6/1	5700 2220	3990 +554	3990 +554
—	2/27 to 5/6	2180 4540	1526 3388	1526 3388
—	2/13 to 5/27	2220 4540	1554 3388	1554 3388
—	1/22 to 5/27	2220	1554	1554
—	1/12 to 1/26	5700	3990	3990
—	3/2 to 5/29	2220	1554	1554

Orig.
D-4

F.B.	Revised	Bkpt	70% Bkpt	2nd Est
720	12/9 to 6/6	5700 2220	3990 1554	2580 2274
—	12/9 to 6/6	5700 2220	3990 1554	3990 1554
0	12/24 to 5/24	2220	1554	1554
—	12/24 to 6/18	5700 2220	3990 1554	3990 1554
0	12/3 to 6/2	5700 2220	3990 1554	3990 1554
—	12/13 to 6/4	5700 2220	3990 1554	3990 1554
80	1/12 to 1/26	—	—	—
—	3/9 to 6/3	5700 2220	3990 1554	1634 1554
—	4/13 to 6/4	4500 1020	3150 714	714 31
—	10/15 to 2/4	—	—	—
—	2/27 to 5/27	4840 2220	3388 1554	3388 1554
0	3/21 to 5/31	5700 2220	3990 1554	3990 1554
0	12/3 to 5/29	5700 2220	3990 1554	3990 1554
3/10 to 4/7				
—	4/27 to 6/20	5700 2220	3990 1554	3990 1554

D-5

210	3/13 to 5/26	3860 5700 2220	2660 3990 1554	2870 1764 1554 420
—	5/3 to 5/12	160	112	112
—	5/5 to 5/12	110	77	77
875	3/13 to 5/27	4840 2220	3388 1554	4263 2429
—	5/5 to 5/12	110	77	77
—	4/2 to 4/12	1085	760	760
—	4/12 to 4/24	600	420	420

Hq-3.1.1

2270	3/13 to 5/26	3820 2220	2674 1554	4944 3824
1320	1/9 to 2/3	—	—	—
—	3/4 to 5/29	5700 2220	3990 1554	5310 2874
395	3/29 to 5/26	3820 2220	2674 1554	3069 1949
933	3/13 to 5/21	2220	1554	2487
2145	3/20 to 5/17	2220	1554	3700
2430	1/24 to 5/29	5700 2220	3990 1554	6420 3984
920	12/9 to ?	—	—	—
—	3/13 to 5/17	2220	1554	2474
2262	2/28 to 5/28	5420 2220	3794 1554	3816 6056
4215	3/29 to 5/29	5700 2220	3990 1554	5769 820

Org.
Hg-3.1.1

Name

F.B.

Residence

Bkgt

70% Bkgt

Total Exp

Org.	Name	F.B.	Residence	Bkgt	70% Bkgt	Total Exp
		880	4/13 to 4/24	485	340	1220
		—	4/2 to 4/10	620	434	434
		1875	4/13 to 4/24	485	340	2215
		—	4/2 to 4/10	620	434	434
		—	4/2 to 4/18	1460	1022	1022
		950	4/15 to 5/13	870	609	1559
		—	5/1 to 5/13	240	168	168
		—	4/2 to 4/18	1460	1022	1022
		270	4/2 to 4/10	620	434	704
		115	4/10 to 4/24	1065	746	861
		360	4/15 to 5/14	870	609	969
		740	4/24 to 5/26	535 ²¹³⁵	375 ¹⁴⁹⁵	1115 2235
		—	5/3 to 5/12	175	123	123
		730	4/13 to 4/23	435	305	1040
		—	5/3 to 5/10	160	112	112
		—	5/4 to 5/14	140	98	98
		4090	4/2 to 4/14	1280	876	4966
1.5.1		5470	2/26 to 4/8	10 ⁴²⁶⁵	7 ²⁹⁸⁴	8463
			4/17 to 6/3	285	550	6029
		3015	1/21 to 2/3	—	—	—
			3/1 to 5/16	2220	1554	4569
		5220	2/26 to 3/8	—	—	—
			3/17 to 6/11	5700 ²²²⁰	3990 ¹⁵⁵⁴	9210 ⁶⁷⁹⁴
		3290	3/10 to 5/29	5700 ²²²⁰	3990 ¹⁵⁵⁴	4844 7280
		850	2/26 to 5/28	5420 ²²²⁰	3794 ¹⁵⁵⁴	2404 4644
		1455	2/26 to 5/1	1980	1386	2841
		—	2/5 to 6/2	5700 ²²²⁰	3990 ¹⁵⁵⁴	1554 3990
		5145	2/28 to 5/24	2220	1554	6700
		—	3/6 to 3/20	—	—	—
		—	3/3 to 4/13	1200	840	—
			5/2 to 5/29	3650 ¹⁷⁰	2535 ¹¹⁹	959 3395
		8. —	3/6 to 4/19	1485	1040	1040
		5840	3/9 to 5/29	5700 ²²²⁰	3990 ¹⁵⁵⁴	7394 9830

PRIVACY ACT MATERIAL REMOVED

Org.	Name	F.B.	Reaches	Blegd	70% Blegd	Total Exp.
1.5.1		2580	2/5 to 6/2	2220 5700	1554 3990	4134 6570
	v.	5510	2/28 to 5/24	2220	1554	7064
		4965	2/5 to 6/3	2220 5700	1554 3990	6579 8955
1.6		60	3/12 to 5/28	2220 5420	1554 3794	1614 3854
		—	3/25 to 5/18	2220	1554	1554
		415	3/18 to 4/29	1900	1330	1745
		0	3/9 to 4/21	1550	1085	1085
		365	3/9 to 4/27	1820	1274	1639
		210	3/9 to 4/27	1820	1274	1484
		130	3/4 to 4/27	1820	1274	1404
1.7		900	5/22 to 5/25	—	—	900
		640	5/22 to 5/25	—	—	640
		—	5/22 to 5/25	—	—	—
		1925	3/12 to 5/27	2220 4840	1554 3388	3479 5313
		2375	3/4 to 5/31	2220 5700	1554 3990	3929 6365
		1415	4/15 to 5/25			
		300	4/5 to 4/8	10	7	307
f.		2600	1/17 to 5/26	2220 3920	1554 2674	4154 5274
2.		300	4/16 to 4/21	150	105	405
		2733	4/1 to 5/26	2220 3920	1554 2674	4287 5407
		70	5/6 to 5/9	45	32	102
		1695	3/12 to 5/27	2220 4840	1554 3388	3249 5083
		880	4/5 to ?			
			5/22 to 5/25	—	—	—
		360	4/5 to 4/8	10	7	367
c.		1075	3/12 to 5/26	2220 3820	1554 2674	2629 3749
		1670	3/12 to 5/26	2220 3820	1554 2674	3224 4344
		2185	3/4 to 5/26	2220	1554	3639
		3785	3/4 to 5/31	2220 5700	1554 3990	5339 7775
'w.		225	4/16 to 4/21	150	105	330
		—	3/18 to 3/29	—	—	—

Orig	Name	F. B.	Residence	Bkhd	70% Bkhd	Total Exp.
1.7		600	5/4 to 5/19	145	102	702
		1808	3/4 to 5/31	5700 2220	3990 1554	5798 3362
		400	4/5 to 4/8	10	7	407
		50	5/6 to 5/9	60	42	92
		130	4/16 to 4/21	150	105	235
		—	3/12 to 5/28	5420 2220	3794 1554	3794 1554
		4.9 5705	3/4 to 5/25	2220	1554	6.45 7259
		E. 1540	3/12 to 5/28	5420 2220	3794 1554	5334 3094
		70	5/6 to 5/9	60	42	112
		—	3/12 to 5/26	3820 2220	2674 1554	2674 1554
		—	3/18 to 3/29	—	—	—
		4240	3/12 to 5/31	5700 2220	3990 1554	5794 8230
		520	4/16 to 4/21	150	105	625
		280	3/17 to 5/27	4840 2220	3388 1554	3668 1834
		—	5/17 to 6/30	3480	2436	2436
		50	4/29 to 5/29	3800 220	2660 224	2710 274
		—	2/1 to 2/15	5	—	—
		70	5/3 to 5/11	160	112	182
		0	3/17 to 5/26	3820 2220	2674 1554	2674 1554
		—	5/17 to 6/30	3480	2660 2660	2660 2660
		—	5/3 to 5/11	160	112	112
		0	3/17 to 5/13	2220	1554	1554
		—	5/5 to 6/15	3600 120	2520 84	2520 84
		—	2/5 to (?)	—	—	—
		—	5/3 to 5/13	170	119	289
		—	4/13 to 5/28	4220 7020	2954 714	2954 714
		—	5/17 to 6/30	3480	2660	2660
		1	3/6 to 5/25	2220	1554	1554
		—	3/17 to 5/21	2220	1554	1554
		1	3/17 to 5/13	2220	1554	1554
		—	1/5 to 4/8	10	7	7
		—	5/17 to 6/5	3480	2660	2660
		—	4/29 to 5/28	320 3520	224 2464	334 2574
		—	3/15 to 5/27	4840 2220	3388 1554	2388 1554

✓

Org.
1.10

Name

F.B.	Residence	Bkgt	70% Bkgt	Total Exp.
—	3 to 5/26			
305	3/17 to 5/26	3120 2220	2184 1554	2489 1854
2200	5/18 to 5/29	3420	2394	4594 2200
1205	5/3 to 5/16	170	119	1324
670	3/17 to 5/28	5260	3682	4352
225	3/25 to 5/26	3140	2198	2423
—	12/28 to 5/21	2220	1554	1554
50	5/3 to 5/11	160	112	162
75	3/17 to 5/26	3140	2198	2273
—	5/18 to 5/29	3420	2394	2394

3.1.2

5440	1/17 to 5/27			
1550	1/9 to 5/16	2220	1554	3104
—	(?) to 5/11	4580	3206	2200
1655	1/9 to 5/27	4580	3206	4861
2180	1/15 to 6/7			
1020	3/26 to 5/13	2210	1547	2567
150	3/12 to 5/5	2200	1470	1620
918	3/14 to 5/17	2220	1554	2472
2080	3/12 to 5/27	4580	3206	5286
2290	3/12 to 5/19	2220	1554	3844
1865	3/12 to 5/27	4580	3206	5071

3.1.3

0	2/12 to 5/14	2220	1554	1554
430	3/23 to 4/13	1200	840	1270
—	3/1 to 5/14	2220	1554	1554
300	3/13 to 5/16	2220	1554	1854
185	3/12 to 5/12	2210	1547	1732

Proj. 5

990	2/28 to 5/19	2220	1554	2544 1554
-----	--------------	------	------	-------------------------

3.1.4

24	3/10 to 5/14			
—	3/31 to 4/23	1640	1148	1148
—	3/10 to 4/8	10	7	7
—	5/5 to 5/25	120	84	84

Org.	Name	F.B.	Residence	Blghd	70% Blghd	Total Exp.
3.1.4	—	5/5 to 5/27	2380	1736	1736	
	0	3/9 to 5/11	2210	1547	1547	
	—	4/15 to 5/11	860	602	602	
	0	4/15 to 5/11	860	602	602	
	—	5/2 to 5/14	210	147	147	
	515	3/10 to 5/27	4580	3206	3721	
	190	3/24 to 5/27	4580	3206	3376	
	-	5/5 to 5/27	2380	1736	1736	
	—	3/24 to 5/25	2220	1554	1554	
	—	4/7 to 4/23	1640	1148	1148	
	—	3/31 to 4/10	620	434	434	
	—	5/6 to 5/26	1040	728	728	

3.1.5

	3750	4/13 to —			
	6080	3/28 to 5/29	5700	3990	10070
	820	3/28 to 4/29	1900	1330	2150
	4550	3/12 to 5/29	5700	3990	8540
	1914	3/4 to 5/16	2220	1554	3468
	4500	1/9 to 5/27	4580	3206	7706
	2860	4/12 to 5/17	1020	714	3574
	2900	5/23 to 6/30	5700 ^{3,500}	3990 ^{2,450}	6890 ^{5,350}
	3,1000	4/11 to 5/17	1320	924	1924
	3885	4/13 to 5/17	1020	714	4599
	4425	3/28 to 5/30	5700	3990	8425

3.1.6

	—	3/12 to 6/1	5700	3990	3990
	—	3/12 to 5/13	1200	840	840
	—	3/12 to 6/1	5700	3990	3990
	1660	3/14 to 6/4	5700	3990	5650
	1020	3/12 to 5/13	2210	1547	2567
	365	3/14 to 6/4	5700	3990	4355
	95	4/22 to 5/13	610	427	522
	2150	3/14 to 6/4	5700	3990	6140
	100	3/12 to 5/11	2210	1547	1647
	—	3/4 to 5/3	2050	1435	1435
	145	(?) to 5/10			

PRIVACY ACT MATERIAL REMOVED

ag	Name	F.B.	Residence	Bkgt	70% Bkgt	Total Ex
		—	3/14 to 4/25	1730	1211	1211
		340	1/9 to 5/28	5420	3794	4134
		—	5/16 to 5/28	3200	2240	2240
		180	2/27 to 3/5	—	—	—
			4/16 to 4/28	460	332	512 332
		1525	12/17 to 6/30	5700	3990	5515
		—	10/28 to 3/25	—	—	—
		—	1/9 to 2/15	—	—	—
		—	1/9 to 2/15	—	—	—
		—	5/26 to 6/15	1890	1323	1323
		—	1/9 to 4/5	—	—	—
		—	5/6 to (?)	3580	2506	2506
		215	1/9 to 3/22	—	—	—
			4/5 to 5/14	2220	1554	1769

PRIVACY ACT MATERIAL REMOVED

231-2