

402912

MARSHALL ISLANDS
RADIOLOGICAL SAFETY PROGRAM
ERDA DIVISION OF
SAFETY, STANDARDS, AND COMPLIANCE

- o RADIOLOGICAL SUPPORT FOR DNA CLEANUP OF ENEWETAK
- o PERSONNEL AND ENVIRONMENTAL MONITORING - BIKINI,
ENEWETAK, RONGELAP, AND UTIRIK
- o RADIOLOGICAL SURVEY - 13 ATOLLS RECEIVING WEAPONS
TESTING FALLOUT

RADIOLOGICAL SUPPORT FOR DNA CLEANUP OF ENEWETAK

- o GUIDELINES AND CRITERIA FOR CLEANUP
- o RADIOLOGICAL ADVICE ON CLEANUP
- o RADIOLOGICAL LAB AND OTHER TECHNICAL SUPPORT
- o CERTIFICATION

RADIOLOGICAL SUPPORT FOR DNA CLEANUP OF ENEWETAK - STAFFING

- o NEVADA OPERATIONS OFFICE STAFF
- o EBERLINE INSTRUMENT CO.
- o EG&G CO.

PERSONNEL AND ENVIRONMENTAL MONITORING - BIKINI, ENEWETAK,
RONGELAP, AND UTIRIK

- o RADIOLOGICAL ASSAY - ENVIRONMENTAL SAMPLES
- o RADIOLOGICAL ASSAY - FOODS
- o WHOLE BODY COUNTING AND URINE SAMPLES
- o DOSE EVALUATION

PERSONNEL AND ENVIRONMENTAL MONITORING - BIKINI, ENEWETAK,
RONGELAP, AND UTIRIK - CONTRACTOR SUPPORT

- o BROOKHAVEN NATIONAL LABORATORY
- o UNIVERSITY OF WASHINGTON
- o LAWRENCE LIVERMORE LABORATORY

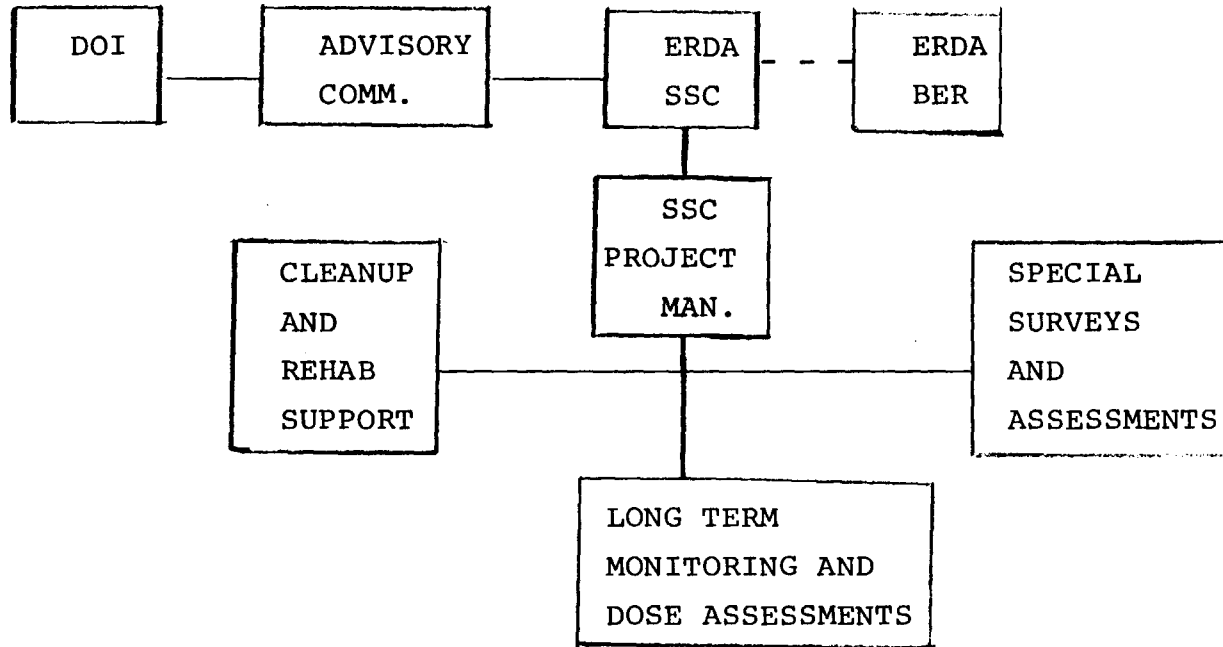
RADIOLOGICAL SURVEY - 13 ATOLLS RECEIVING WEAPONS TESTING FALLOUT

- o FALLOUT FROM BRAVO EVENT AND OTHER TESTS IMPACTED MANY ATOLLS
- o UN TRUST AGREEMENT TO BE TERMINATED 1980'S
- o U.S. OBLIGATION TO DOCUMENT CONDITIONS
- o ASSURANCE AGAINST SURPRISES IN FUTURE
- o TERMS FOR DROPPING BIKINI LAWSUIT

RADIOLOGICAL SURVEY - 13 ATOLLS RECEIVING WEAPONS TESTING
FALLOUT - PARTICIPATION

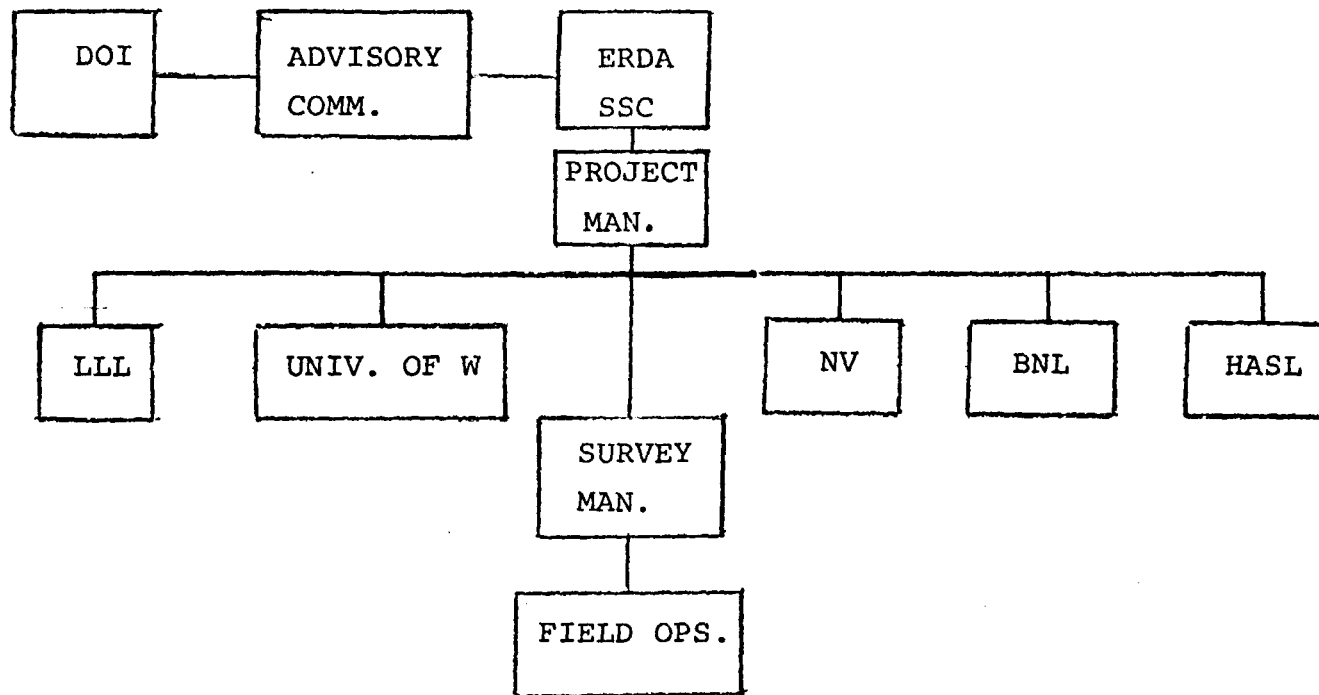
- o DEPARTMENT OF DEFENSE - LOGISTIC SUPPORT
- o ERDA NEVADA OPERATIONS - EG&G AERIAL MONITORING
- o ERDA'S HEALTH AND SAFETY LABORATORY - PLANNING, SAMPLE
ANALYSIS
- o UNIVERSITY OF WASHINGTON - MARINE ENVIRONMENT
- o BROOKHAVEN NATIONAL LABORATORY - TERRESTRIAL ENVIRONMENT
- o LAWRENCE LIVERMORE LABORATORY - PLANNING, DOSE ASSESSMENTS

MARSHALL ISLANDS RADIOLOGICAL SAFETY PROGRAM *

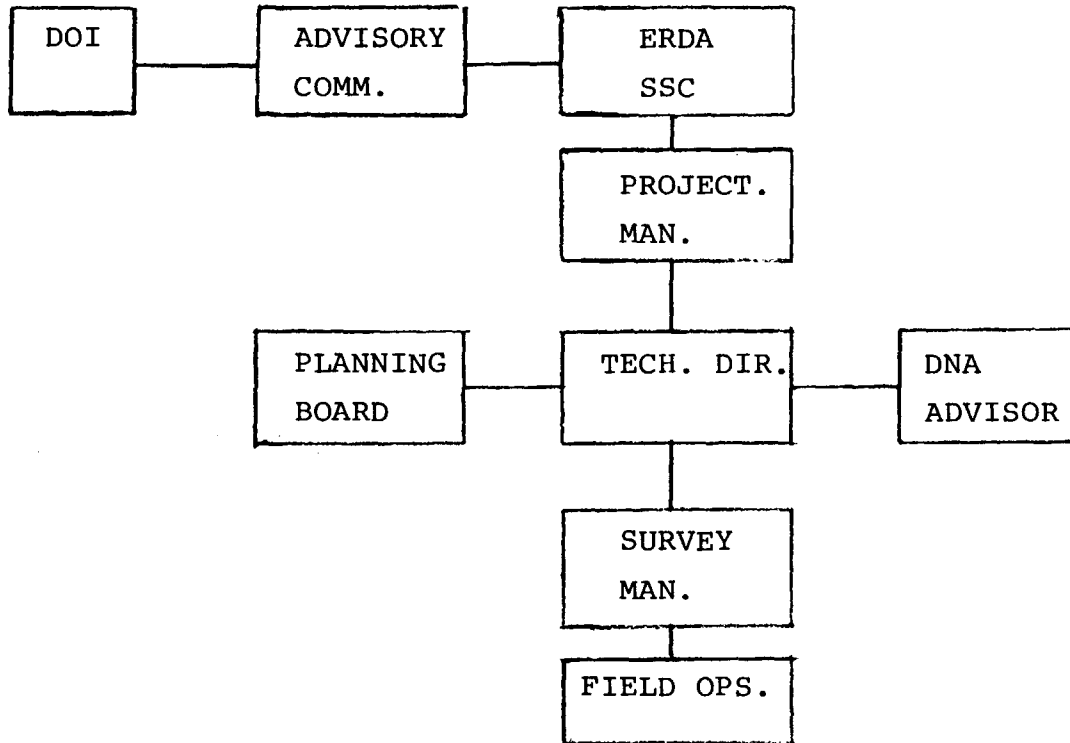


* BER RESEARCH IN THE PACIFIC AND MEDICAL FOLLOWUP FOR RONGELAP AND UTIRIK PEOPLE COMPLETELY SEPERATE ORGANIZATIONALLY FROM THE SAFETY PROGRAM AND ARE FUNDED SEPERATELY. THESE SSC AND BER ACTIVITIES WILL BE COORDINATED WITHIN ERDA HQ. AS SHOWN BY THE DASHED LINE.

LONG TERM MONITORING AND DOSE ASSESSMENTS



SPECIAL SURVEYS AND ASSESSMENTS



CLEANUP AND REHABILITATION SUPPORT

