

SECRET, UNCLASSIFIED, CONFIDENTIAL, SECRETARY  
BOX No. 102 (NN3-326-93-007)  
FOLDER 471.6 (10-20-48)  
Greenhouse vol. #1

CONFIRMED TO BE UNCLASSIFIED  
BY AUTHORITY OF DOE/OG  
Carl Wilson 1/24/84  
REVIEWED BY DATE

DISTRIBUTION	COPY NO.
Secretary	1
Commissioners	2 - 6
General Manager	7
Deputy General Manager	8
General Counsel	9, 10
Biology & Medicine	11
Finance	12-14
Information	15, 16
Intelligence	17
Military Application	18-23
Production	24
Program Council	25
Reactor Development	26, 27
Research	28
Security	29
Secretariat	30-44

CLASSIFICATION CANCELLED  
~~CONFIDENTIAL~~  
BY AUTHORITY OF DOE  
BY Shaw DATE 3/20/21

When separated from enclosures  
handle this document as.....

~~CONFIDENTIAL~~  
WITH ATTACHMENTS ENCL.  
CONTAINS NO DOE CLASSIFIED INFO  
COORDINATE WITH: DOE  
DOE NSI DECLASSIFICATION REVIEW E.O. 12958  
BY: CURTIS KRUESER DOE/NN-623

MI-0899

- DEFS FROM THE MLC AND THE MLC, TO BE THE FOLLOWING POINTS:
- a. Delimiting the organization of the Task Force.
  - b. Outlining the participation of the several components of the Armed Forces.
  - c. Outlining the recommended action on all aspects of the test which are of concern to the Armed Forces.

3. The MLC has designated Admiral Hill as their representative. The Director of Military Application acting for the Commission has designated Dr. A. C. Graves, Los Alamos Scientific Laboratory and Colonel P. T. Preuss, Division of Military Application, as ex-officio members.

4. The first meeting of the Joint Proof-Test Committee was held on July 12-13. After a review of SANDSTONE organization and experience a proposed organization for 1951 was discussed. (See Chart, Tab A).

5. In considering the attached chart the following points are significant:

- 1 -

CLASSIFICATION CANCELLED  
RECEIVED TO  
BY ASSISTANT DIR OF ROC  
BY Attache DATE 3/22/78

[REDACTED]

[REDACTED]

a. It is proposed that agencies and personnel of the three Services and of the Atomic Energy Commission be merged into a functional quadripartite organization. In order to facilitate coordination, representatives of the AEC and its contractors will be assigned within the principal staff sections alongside members of the Armed Services.

b. It is proposed that all scientific experiments, both AEC and NME, be under the direct supervision of the AEC's Scientific Director. Scientific and technical personnel will be drawn from Los Alamos Laboratory, from the NME and from the following contractors to Los Alamos: Bureau of Standards, Naval Research Laboratory, Naval Ordnance Laboratory, and Edgerton, Germeshausen and Grier. The Scientific Task Group will also contain a Biomedical section drawn from the Commission Laboratories, from AEC contractors doing work in this field, and from NME medical agencies.

c. It is proposed that the Scientific Director be both a deputy to the Task Force Commander and the Director of the Scientific Task Group.

d. The firm of Holmes and Narver, now engaged in constructing semi-permanent facilities at Eniwetok, will provide routine housekeeping, internal communications, and minor technical construction services for the Scientific Group during the operational phases of the test program.

6. The problem of establishment of adequate AEC representation in the field without diluting the functional responsibilities of the senior Laboratory representative, Dr. Alvin C. Graves, has not been completely resolved.

7. Our current thinking is to designate a senior officer from the Division of Military Application as AEC Representative. This officer would serve in the functional organization as Deputy Chief of Staff. He would, however, be available to consult with Dr. Graves and General Quesada on AEC policy matters, refer policy matters where necessary to the Commission direct, serve as a contracting officer to administer contracts such as Holmes and Narver and to take such other Commission action in the field as required. Due to the greater time available for planning it is expected that the number of problems requiring action in the field by a Commission representative will be far smaller than the problems which

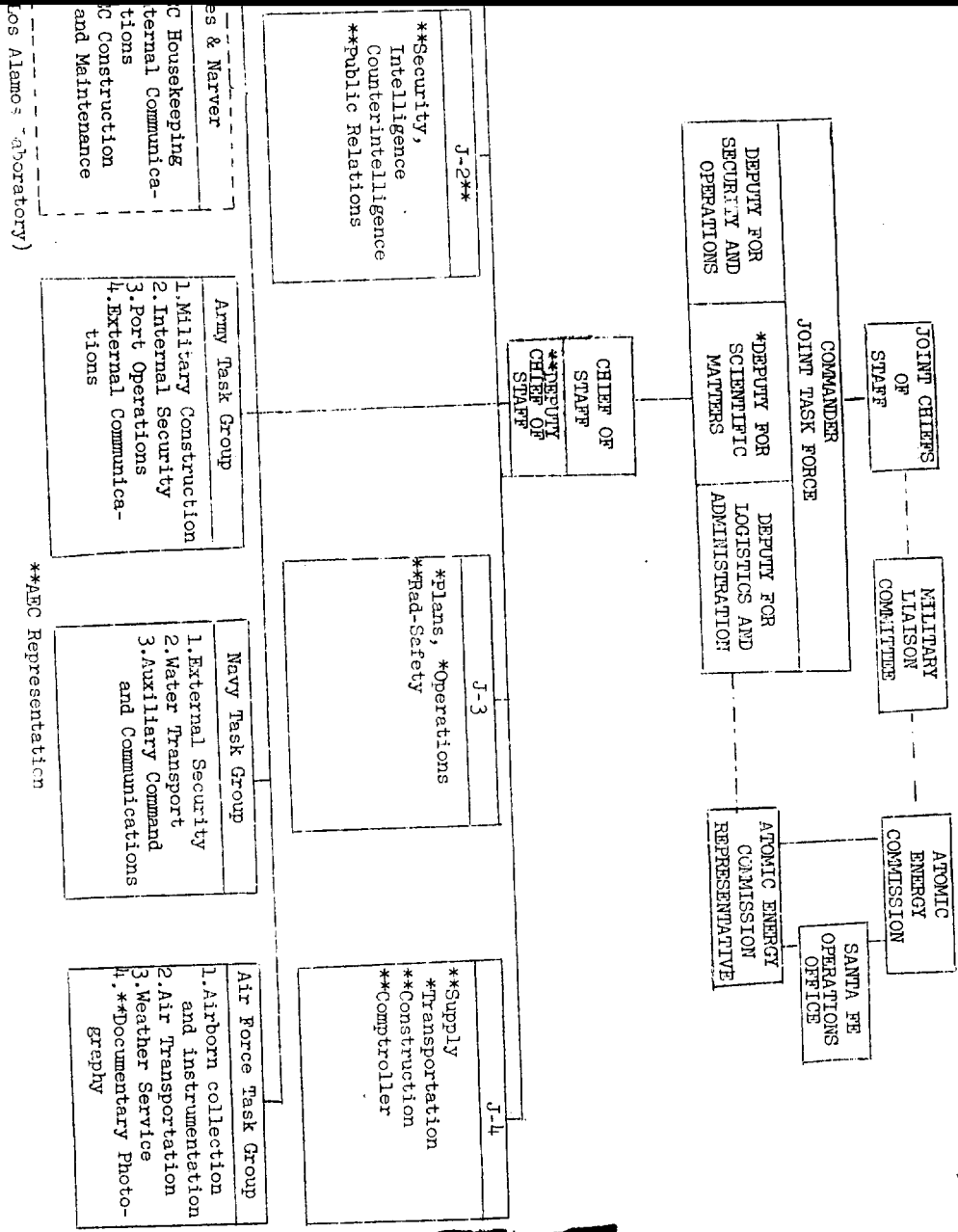
[REDACTED]

[REDACTED]

confronted Captain Russell during the hurried-up Operation SAND-  
STONE.

8. A more complete staff solution will be presented at a  
later date.

1 Attach:  
Tab A - Organization Chart



\*\*AEC Representation